

CAIRNS/CAIRNS INTL**ELEV 10****AVFAX CODE 4511**

QLD

UTC +10

YBCS

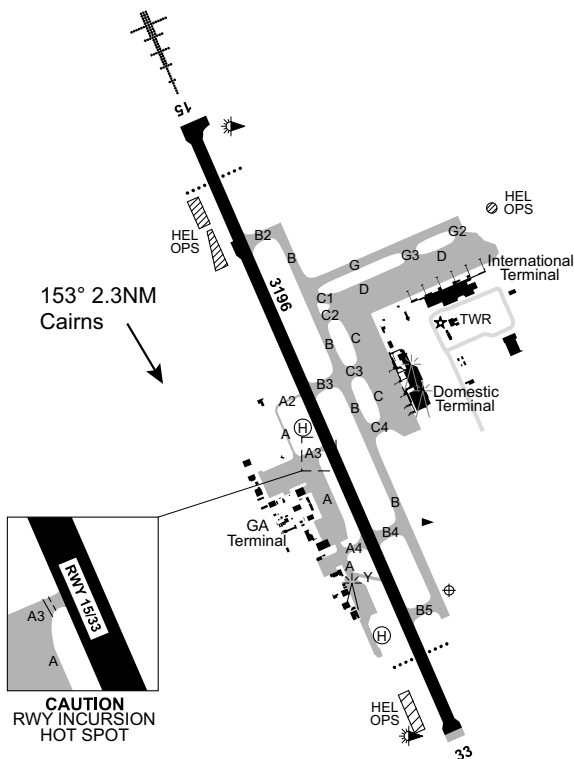
165309S

1454519E

VAR 7 DEG E

CERT

AD OPR Cairns Airport Pty Ltd, PO Box 57, Airport Administration Centre, Cairns Airport, QLD, 4870. Email: enquiries@ Cairnsairport.com.au. PH 24HR 07 4080 6744. Website: www.cairnsairport.com.au.

**REMARKS**

- AD Charges: All ACFT refer conditions of use on website.
- Restrictions apply for ground OPS. Contact Cairns Airport Pty Ltd for details. Phone 07 4080 6744 or 0412 773 065. Email coords@ Cairnsairport.com.au.
- Aerodrome operations frequency - Cairns Airport Pty Ltd VHF 129.9.
- INTL flights requiring Customs; Phone 07 4052 3551/4052 3552.
- This AD is a Security Controlled Airport.

HANDLING SERVICES AND FACILITIES

Air BP - Danshe Pty Ltd: 2000-0800 UTC DLY. Phone 07 4035 9872. Fax 07 4034 9238.

Mobile 0418 778 956. AH 1HR PN. AH call-out fee. VHF 126.40. AVGAS, JET A1, JET FSII.

JUHI Services: 1800-1500 UTC DLY. Phone 07 4046 2300. AH (call-out) Mobile 0408 153 336.

JET A1 (hydrants/mobile tankers).

Viva Energy Australia – JL Aviation Fuelling Pty Ltd: RPT DOM/INTL APN. JET A1 1800-1030 UTC DLY. PH: 0429 142 922.

GA Apron MON-FRI 1900-0800 UTC, SAT-SUN 1930-0800 UTC. JET A1, AVGAS, JETPLUS (FSII) PH: 07 4035 9686 or 0417 788 330. AH 1HR PN contact MOB (call-out fee applies).

Machjet International: Marshalling and Ground Handling services H24 DLY.

Phone: +61 428 756 929 or +61 7 5457 0778. Email: fbo@machjet.com.au.

Jet Aviation Australia - FBO Services and VIP Lounge H24 (civil and MIL ACFT).

PH OPS H24 +61 478 880 776 or +61 7 4030 1859. Email: cnsfbo@jetaviation.com. VHF 135.95, CS 'Jet Aviation'.

General

Aircraft marshalling is required for all charter and visiting aircraft using the Domestic and International aprons. All aircraft using these aprons must be facilitated through a Fixed Base Operator or ground handler. Crew and passengers must be escorted to and from the aircraft. The AD OPR does not provide a marshalling service.

RESCUE AND FIREFIGHTING SERVICES

1. CAT 8 H24 131.0 MHz AVBL H24.
2. Water Rescue Service AVBL.

APRONS AND TAXIWAYS

1. Pavement restrictions - TWY A2 and A BTN A2 and A3 not AVBL to ACFT ABV 7,000KG, TWY A4 not AVBL to ACFT ABV 90,000KG. TWY Y not AVBL to ACFT ABV 10,000KG.
2. Taxiways - outboard ENG on four-engine jet ACFT to be OPR at low PWR to prevent erosion and ENG damage.

AERODROME OBSTACLES

1. Unlit NDB CS BRG 327 MAG 2.6NM FM ARP 152FT AMSL. Infringes inner HZS by 0.9FT.
2. Unlit fence APRX BRG 150 MAG 3,219.9M FM RWY 15 THR offset 123.9M R 16.75FT AMSL. Infringes APCH SFC by 6.5FT and not part of TODA and STODA gradients.
3. Unlit NF aerial APRX BRG 148 MAG 3,246M FM RWY 15 THR offset 0.3M L 12.8FT AMSL inside CWY. Infringes APCH SFC by 2.9FT.
4. Lit LLZ BLDG by red OBST LGT APRX BRG 330 MAG 3,359.1M FM RWY 33 THR offset 100.8M R 25.1FT AMSL. Infringes APCH and TKOF SFC by 9.1FT.
5. Lit LLZ BLDG by red OBST LGT APRX BRG 147 MAG 3,282M FM RWY 15 THR offset 103.6M L 21.9FT AMSL. Infringes APCH SFC by 9.5FT.
6. Lit LLZ aerial by red OBST LGT APRX BRG 148 MAG 3,307.2M FM RWY 15 THR 15.9FT AMSL. Infringes APCH SFC by 1.9FT TKOF SFC by 3.9FT.
7. Lit LLZ aerial by red OBST LGT APRX BRG 328 MAG 3,336.2M FM RWY 33 THR 15.25FT AMSL. Infringes APCH and TKOF SFC by 0.9FT.
8. Tree 56FT AMSL BRG 176 MAG 0.66NM FM ARP. Infringes RWY 33 APCH SFC by 17FT.

SURFACE MOVEMENT GUIDANCE

1. TWY A3 not AVBL for ACFT ABV 23,000KG.
2. TWY A3 holding point marking ONLY clearly visible when taxiing on centre line of TWY. Holding points are NOT aligned with gable markers.

METEOROLOGICAL INFORMATION PROVIDED

1. TAF CAT A, METAR/SPECI, TAF3 H24, AD WRNG, WS WRNG.
2. MET INFO AVBL FM Airservices Pilot Briefing. Elaborative briefing FM BoM 07 3239 8721.
3. AWIS PH 07 3564 3708 - Report faults to BoM.

PHYSICAL CHARACTERISTICS

15/33 150 105a PCN 110 /F /D /1575 (228PSI) /T Grooved WID 45 RWS 300
 RWS variation - RWY 33 (South end) is 180M, increased to 300M at 1,352M from THR.
 RWY 15 (North end) is 300M, reduced to 180M at 1,804 FM THR.

AERODROME AND APPROACH LIGHTING

RWY 15/33	HIRL(1)		SDBY PWR AVBL
RWY 15/33	MIRL		SDBY PWR AVBL
RWY 15	HIAL-CAT I(1)		SDBY PWR AVBL
RWY 15	PAPI	3.0 DEG53FT	SDBY PWR AVBL
RWY 33	PAPI	3.0 DEG61FT	SDBY PWR AVBL

- (1) Six (6) stage intensity.
1. **ALS type and length**
 - a. RWY 15 - distance coded CL: 900M.
2. THR lights: Green-coloured. No wing bars installed.
3. RWY touchdown zone lights: Not installed.
4. RWY centerline lights: Not installed.
5. RWY edge lights spacing: 59.6M. MIRL Stages 1-3 White-coloured. HIRL Stages 4-6 White-coloured. Yellow-coloured for last 600M.
6. RWY end lights: Red-coloured. No wing bars installed.
7. Stopway lights: Not installed.
8. Turn pads: Blue-coloured edge lights.

OTHER LIGHTING

- ABN ALTN 8 WG Location and activation: ATC TWR. Activated 20MIN prior to ARR HN. Before DEP HN. Periods of low VIS as determined by ATC.
- HBN R FLG R 1.5 SEC. Installed on natural terrain.
- HBN R Installed on other OBST.
1. TWY LGT: Green CL. Stages 1-3.
 2. RWY Guard Lights at RWY 15/33 TWY intersections.
 3. Secondary PWR switchover time: 15 SEC.
 4. TWY LGT: Blue reflective edge on C BTN C3 and C4.

ATS AND AERODROME COMMUNICATION FACILITIES

FIA	CAIRNS APPROACH	126.1
ACD	CAIRNS DELIVERY	128.75
APP/DEP	CAIRNS APPROACH	118.4
APP/FIA	CAIRNS APPROACH	126.1
ATIS	CAIRNS ATIS (2)	113.0 131.1
SMC	CAIRNS GROUND	121.7
TWR	CAIRNS TOWER	124.9
VOLMET	AUSTRALIA	6676 (1) 11387 (1)

(1) H24, BCST 00 - 05 & 30 - 35. Refer AIP GEN 3.5.

(2) Also AVBL on Phone 07 4050 5311.

For ATC and training prior arrangements, Phone 1300 353 170 or 07 3866 3533^.

RADIO NAVIGATION AND LANDING AIDS

DME	CS	113.0/ 77X	165100.5S	1454438.2E	(2)
NDB	CS	364	165049.1S	1454408.0E	Range 50 (HN 50) OW 160 (3) (OW HN110)
VOR	CS	113.0	165100.1S	1454438.0E	(1)
DME	ICN	109.5/ 32X (RWY33)	165209.6S	1454436.7E	(5)(9))
LOC	ICN	109.5 (RWY33)	165152.8S	1454435.0E	(4)
DME	ICS	109.9/ 36X (RWY15)	165208.7S	1454436.3E	(6)(8))
GP	ICS	333.8 (RWY15)	165208.6S	1454436.6E	
ILS	ICS	109.9 (RWY15)	165335.6S	1454521.4E	
LOC	ICS	109.9 (RWY15)	165335.6S	1454521.4E	(7)
MM	ICS	75 (RWY15)	165129.5S	1454424.7E	

(1) 158/2.2 to ARP.

(2) 158/2.2 to ARP - Antenna ELEV 42FT.

(3) 144/2.6 to ARP.

(4) Use of Localizer on W side limited to WI 30DEG of the extended RCL. Use of LOC at 25NM limited to above 6,000FT. Use of LOC at 17NM limited to above 4,000FT.

(5) Antenna ELEV 22FT.

(6) Antenna ELEV 22FT

- (7) Coverage BTN 10DEG to 35DEG W of RWY centreline limited by high terrain and varies BTN 2000FT and 4500FT.
- (8) Poor coverage below 5000FT beyond 25DEG W of RWY centreline.
- (9) Poor coverage below FL150 BTN 20DEG and 35DEG W of RWY centreline.

LOCAL TRAFFIC REGULATIONS

1. All aircraft must provide their parked position/gate number to ATC on acknowledgement of airways clearance.
2. Parking restrictions. Due to critical shortage of apron space, all non-RPT ACFT ABV 5,700KG and rotary wing, Government and MIL requiring access to the GA, Domestic or INTL aprons and rotary wing requiring parking on HP1 abeam TWY A3 must obtain prior parking approval from Cairns Airport Pty Ltd. 48HR PN; Phone 07 4080 6744 H24. VHF 129.9. Email coords@cairnsairport.com.au.
3. RWY 15 THR turn pads - clockwise turns only.
4. ACFT with wingspan ABV 36M must use turn pads at RWY ends. ACFT to execute MAX RAD turns.
5. All ACFT using RWY 15/33 turn pads to use MAX radius turns. All wide bodied ACFT using RWY 15/33 turn pads are also requested to use minimum thrust.
6. **RWY INCURSION HOTSPOTS**
RWY 15/33 and TWY A3.
7. Western run-up bay not AVBL to turbine engine ACFT except for normal pre-flight checks associated with departure. Noise Abatement Procedures apply.
8. Fixed wing ACFT departing from a point within 100NM of Cairns for arrival at Cairns will be processed more expeditiously if a specific landing time has been obtained from ATC.
9. When requesting taxi instructions, pilots must nominate intersection departure, or full RWY length requirement.
10. **TRAINING AND AIRWORK FLIGHTS WITHIN CAIRNS CTR/A**
 - a. Training involving IAL procedures and any other airwork or flight testing involving operations in Cairns Class C airspace must be arranged with Cairns ATC on 1300 353 170 or 07 3866 3533^.
 - b. Practice instrument approaches by arriving aircraft will normally be approved, however, requests should be made as early as possible, preferably at the flight planning stage.
 - c. NDB-B and VOR-B approaches will not normally be approved BTN 0800-1700 Local.
 - d. Training operations contrary to the prevailing traffic pattern/operational runway direction will not normally be approved.
 - e. A missed approach from the IAL may not be available if it conflicts with the prevailing traffic pattern.
 - f. Fixed wing flights YBCS for YBCS with an EET of 45MIN or less must contact Cairns Approach on 1300 353 170 or 07 3866 3533^ to obtain a landing slot.
 - g. All ACFT requesting circuits or AWK within the CTR are subject to prior approval by Cairns Tower on 07 4050 5356^. Traffic restrictions may be applied during peak traffic periods. Landing Slot Times are required for these operations.
 - h. Circuit training by jet ACFT and other ACFT exceeding 5,700KG MTOW is not permitted BTN 2200-0700 Local.
 - i. Circuit training preferred directions:
 - (i) RWY 15 - Left hand circuits.
 - (ii) RWY 33 - Right hand circuits.
11. TS advice system installed on DOM and INTL APN. Expect ACFT docking and DEP delays when lightning is detected WI 5NM, indicated by blue strobe lights.
12. Taxilane wingspan limitations apply at the GA APN and are indicated in blue letters on white gable markers at the entry of the taxilanes.

FLIGHT PROCEDURES

1. **ATC TRAFFIC MANAGEMENT SPEED**
When **not** on a SID or STAR (including vectoring) - ACFT ARR or DEP CS must not exceed 250KT IAS when BLW 10,000FT AMSL. Advise ATC if a higher speed is operationally required.
2. ACFT requesting DEP from within the CS CTR must contact CS Delivery 128.75 for airways clearance.
3. All VFR ACFT leaving CS CTR at or BLW 1,000FT shall switch to area FREQ (126.1).
4. **LOW VISIBILITY OPERATIONS**
 - a. RWY 15 - CAT I precision APCH.
 - b. Low VIS TKOF are NOT supported. RWY 15/33 is capable of supporting TKOF with a RWY VIS of not less than 800M.
 - c. Manual RV readings are provided to the control TWR. Transmissometers are not installed.
 - d. RWY Guard Lights - a pair of unidirectional flashing yellow lights are installed at each TWY INT to caution pilots or vehicle drivers that they are about to enter an active RWY.
5. **SPECIAL PROCEDURES - VFR CORRIDORS**
 - a. Flights established in the Western VFR corridor:
 - (i) MUST remain WEST of the Captain Cook Highway between PALM COVE and the CABLEWAY TERMINAL.
 - (ii) MUST remain WEST of the Cairns Western Arterial Road between the CABLEWAY TERMINAL and MARINO'S QUARRY.
 - (iii) Due to poor radar coverage 2,500FT to SW of AD, must not leave the corridor until specifically instructed by ATC.
 - (iv) MUST remain WEST of MARINO'S QUARRY, KOPPEN PARK, EARLVILLE SHOPPING CENTRE and CAIRNS GOLF COURSE between MARINO'S QUARRY and CAIRNS GOLF COURSE.
 - (v) MUST remain WEST of the Bruce Highway SOUTH of the CAIRNS GOLF COURSE.
 - (vi) MUST remain clear of the Edmonton parachute area.
 - b. ACFT cleared inbound via the Eastern VFR corridor must track via the corridor to ABM the SUGAR TERMINAL and thence as directed by ATC.
6. ACFT planning to enter the CS CTR BTN: Mt Gorton, Cape Grafton and Upolo Cay at 500FT, must contact CS TWR for airways clearance.
7. ACFT landing RWY 15 RQ approval to vacate on TWY A2 and B2.
8. ACFT landing RWY 33 RQ approval to vacate on TWY Y and B5.
9. B777-300 pilots should be aware that normal clearance to TWY edge may not be AVBL during turns.
10. **HELICOPTER PROCEDURES**
 - a. Arrivals: On first CTC with CS TWR notify intended LDG point on the AD
 - b. Departures: Notify CS TWR of current position and intended DEP position on the AD with READY call.
 - c. Helicopter operations from Armour Museum Caravonica, 3NM west of ARP, close proximity to VFR corridor.
 - d. Fly Neighbourly Procedures apply

NOISE ABATEMENT PROCEDURES

Noise Abatement Procedures (NAP) apply. Refer AIP DAP.

ADDITIONAL INFORMATION

1. Bird hazard exists. Increased numbers of the following species are expected during the specified times and locations and may transit through critical airspace:
 - a. JAN-APR: magpie geese, pied imperial pigeons and lapwing.
 - b. MAY-SEP: black kites, white faced heron, ibis, intermediate and cattle egret, beach stone-curler and bush stone-curler and lapwing.
 - c. OCT-DEC: pied imperial pigeons, white faced heron, ibis, egret and lapwing.
 - d. Flying foxes can pose a hazard at any time of the year; peak activity around dusk and dawn.

-
- e. Increased bird activity during and post rainfall and adverse weather events including Australian white ibis and straw-necked ibis.
 - f. Flocks of small birds feeding in air above RWY, RWY 15 undershoot and short final including fairy martin and welcome swallow, particularly during breeding season from JUL-JAN.
- 2. Bird Watch Condition Reports and species specific NOTAM will be issued during periods of increased activity.
 - 3. Intense parachuting activity occurs in the Edmonton parachuting area (D762), as depicted on Cairns VTC, HJ. Jump ACFT broadcast on 126.1.
 - 4. CAUTION: False Traffic advisories (may be generated on TCAS equipment due to transponders on naval vessels operating from HMAS Cairns (Position APRX 3NM on extended RCL RWY 15/33, SE of Cairns).

CHARTS RELATED TO THE AERODROME

- 1. WAC 3219.
 - 2. Aerodrome Obstacle Chart Type A: August 2023.
 - 3. Also refer to AIP Departure and Approach Procedures.
-