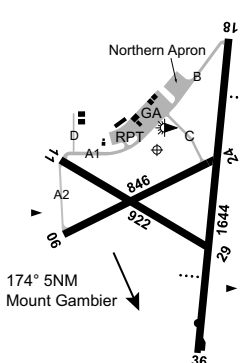


**MOUNT GAMBIER****ELEV 212****AVFAX CODE 5006**

SA 374444S 1404707E UTC +9:30 YMTG  
 374444S 1404707E VAR 10 DEG E CERT  
 AD OPR District Council of Grant, PO Box 724, Mount Gambier, SA,  
 5290. ARO 08 8725 1112 (H24). Council PH 08 8721 0444.

**REMARKS**

- AD Charges: Itinerant ACFT: \$7/tonne MTOW pro-rata per landing. MNM \$12.00.
- BTN 2230-0515 Local, airport entrance gates are locked for security. Opening charges apply. MNM fee \$25.
- This AD is a Security Controlled Airport.
- Parking not permitted on RPT apron without prior approval. RPT ACFT excepted.

**HANDLING SERVICES AND FACILITIES**

Stark Aviation: 0407 799 727. No text messages. AVGAS self-serve credit card facility (V and MC only). JET A1 tanker - contact Stark Aviation (AH call-out fee applies).

**PASSENGER FACILITIES**

WC/LG (restricted hours)/HC/TX/RF (restricted hours).

**APRONS AND TAXIWAYS**

TWY B, Northern and RPT APN PCN 12/F/B/1000 (145PSI).

**AERODROME OBSTACLES**

APCH RWY 36 visual segment infringed by trees 273FT AMSL, 654M FM THR, 173M east of RCL.

**METEOROLOGICAL INFORMATION PROVIDED**

- TAF CAT C, METAR/SPECI.
- AWIS Phone 08 8150 3809 - Report faults to BoM.
- AWIS FREQ 133.425 (requires one-second pulse to activate) - Report faults to AD OPR.

**PHYSICAL CHARACTERISTICS**

06/24	054	28a	PCN 6 /F /A /580 (84PSI) /U	WID 30	RWS 90
11/29	111	30a	PCN 6 /F /A /580 (84PSI) /U	WID 30	RWS 90
18/36	176	54a	PCN 12 /F /B /1000 (145PSI) /U	WID 30	RWS 150

**AERODROME AND APPROACH LIGHTING**

RWY 06/24	LIRL	PAL+AA 122.3	SDBY PWR AVBL
RWY 18/36	LIRL	PAL+AA 122.3	SDBY PWR AVBL
RWY 18/36	PAPI(1)	PAL+AA 122.3	3.0 DEG41FT

(1) Left side.

- RWY edge light spacing:
  - RWY 18/36: 60M.
  - RWY 06/24: 90M.
- HJ Selection of PAL will only activate PAPI. RWY lights will OPR only when poor light levels exist.

**OTHER LIGHTING**

- TWY LGT: Green CL on B. Blue edge on A1, A2.
- SDBY PWR switchover time: 30 SEC.

**ATS AND AERODROME COMMUNICATION FACILITIES**

FIA MELBOURNE CENTRE 125.8 For on ground CTC with ML CEN, use  
 FREQ 120.3

**RADIO NAVIGATION AND LANDING AIDS**

NDB	MTG	266	374509.2S	1404644.5E	Range 75 (HN 75)	(1)
VOR	MTG	117.0	374505.0S	1404707.0E		

(1) Range 50 in sector 110-140.

**LOCAL TRAFFIC REGULATIONS**

GA area and TWY A1, A2, C (sealed) and D not AVBL to ACFT ABV 5,700KG.

**CTAF - AFRU** 126.65

**ADDITIONAL INFORMATION**

1. Bird hazard exists.
2. Weather balloon launch MON and THU APRX 2315 UTC FM 1KM W ARP. Launches may occur at other times.

**CHARTS RELATED TO THE AERODROME**

1. WAC 3469.
  2. Also refer to AIP Departure and Approach Procedures.
-