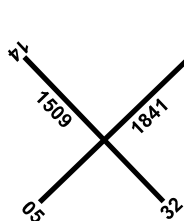


CUNDERDIN**ELEV 705****AVFAX CODE 6005**

WA
 313720S 1171300E UTC +8 YCUN
 VAR 1 DEG W CERT
 AD OPR Cunderdin Shire Council, PO Box 100, Cunderdin, WA, 6407.
 Email: admin@cunderdin.wa.gov.au. PH 08 9635 1005. ARO 0409 686
 938. Fax 08 9635 1464.

REMARKS

- AD Charges: All ACFT.
- PPR.
- Gliding OPS HJ, Weekends and Public Holidays (2300-0830 UTC).

METEOROLOGICAL INFORMATION PROVIDED

- TAF CAT D, METAR/SPECI.
- AWIS Phone 08 6216 2608 - Report faults to BoM.

PHYSICAL CHARACTERISTICS

| | | | | |
|-------|-----|------------------------------|--------|--------|
| 05/23 | 60a | PCN 8 /F /C /850 (123PSI) /T | WID 30 | RWS 90 |
| 14/32 | 50a | PCN 8 /F /C /850 (123PSI) /T | WID 30 | RWS 90 |

AERODROME AND APPROACH LIGHTING

RWY 05/23 LIRL(1) AFRU+PAL 127.8 SDBY PWR AVBL

(1) Manual on REQ. LGT Laterally spaced at 50M.

RWY edge light spacing: 05/23: 90M.

OTHER LIGHTING

- SDBY PWR switchover time: within 15 MIN.
- TWY LGT: Blue edge for taxiing on RWY 14/32 SW of RWY 05/23.

ATS AND AERODROME COMMUNICATION FACILITIES

FIA MELBOURNE CENTRE 120.3 3000FT

RADIO NAVIGATION AND LANDING AIDS

NDB CUN 293 313730.3S 1171326.5E Range 140 (HN 85) (1)
 (1) Pilot Monitored

LOCAL TRAFFIC REGULATIONS

RWS 14/32 and RWS 05/23 width reduced to 60M during gliding OPS. All ACFT parked outside 60M RWS edge.

FLIGHT PROCEDURES

Instrument approaches are not AVBL to CAT C ACFT during specified periods.

CTAF - AFRU 127.8**ADDITIONAL INFORMATION**

Gliders monitor 122.7 MHz.

CHARTS RELATED TO THE AERODROME

- WAC 3351, 3462.
- Also refer to AIP Departure and Approach Procedures.