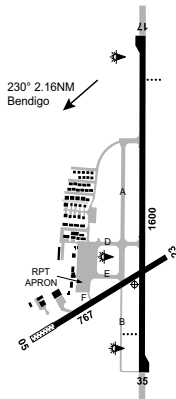


BENDIGO**ELEV 710****AVFAX CODE 3021**

VIC 364421S 1441947E UTC +10 YBDG
 364421S 1441947E VAR 11 DEG E CERT
 AD OPR City of Greater Bendigo, PO Box 733, Bendigo, VIC, 3552. Email:
 airport@bendigo.vic.gov.au. PH 03 5434 6000. ARO 0499 700 128.
 Website: www.bendigoairport.com.au.

**REMARKS**

- AD fees apply refer to website for details.
- This AD is a Security Controlled Airport. A valid ASIC must be displayed when airside.
- Australian standards approved hi-visibility clothing/vest to be worn whilst on APN, TWY and RWY.
- PPR for all PRKG on RPT APN. CTC ARO mobile.

HANDLING SERVICES AND FACILITIES

Skyfuel: AVGAS and JET A1. H24 self-service bowzers accepts MC, V and Skyfuel Carnet card. PH 0418 862 100 or 0417 780 280. Refer to www.skyfuel.com.au for site information and orientation.
 IOR Aviation Pty Ltd: JET A1 by tanker. H24. \$130 call-out fee applies outside 0800 - 1700 Local. PH Justin 0428 179 873.

APRONS AND TAXIWAYS

Code C ACFT APN access via TWY D only. All other TWY 5,700KG MTOW.

AERODROME OBSTACLES

- Lit TWR 891FT AMSL 276 DEG MAG, 1,740M FM ARP.
- Building spire 940FT AMSL BRG 201 DEG MAG 2.82NM FM ARP. Infringes inner HZS by 104FT.
- Phone TWR 878FT AMSL BRG 222 DEG MAG 1.2NM FM ARP. Infringes inner HZS by 41FT.
- Transmission TWR:
 - 1,059FT AMSL BRG 187 DEG MAG 2.82NM FM ARP. Infringes COS by 92FT.
 - 1,086FT AMSL BRG 193 DEG MAG 3NM FM ARP. Infringes COS by 92FT.

METEOROLOGICAL INFORMATION PROVIDED

- TAF CAT C, METAR/SPECI.
- AWIS PH 03 8470 3203 - Report faults to BoM.
- AWIS FREQ 128.15 - (requires one-second pulse to activate) - Report faults to AD OPR.

PHYSICAL CHARACTERISTICS

05/23	050	25a	5700/650 (94PSI)	130(427) W end grass.	WID 18	RWS 60
17/35	171	52a	PCN 21 /F /D /1400 (203PSI) /T		WID 30	RWS 150

AERODROME AND APPROACH LIGHTING

RWY 17/35	LIRL	AFRU+PAL 119.3		SDBY PWR AVBL
RWY 17/35	PAPI(1)	AFRU+PAL 119.3	3.0 DEG50FT	SDBY PWR AVBL

(1) Left side only.

RWY 17/35 edge light spacing: 60M.

OTHER LIGHTING

- SDBY PWR switchover time: 15 SEC.
- RWY guard lights (RGL) at RWY/TWY intersections.
- TWY LGT: Blue edge on D.

ATS AND AERODROME COMMUNICATION FACILITIES

FIA MELBOURNE CENTRE 126.8 Circuit area

LOCAL TRAFFIC REGULATIONS

- Circuit activity not permitted BTN 2200-0700 Local.
- ACFT engine run up not permitted on RPT APN.
- All Code C ACFT must roll through and use RWY turning nodes and MAX radius turns on RWY and APN.
- ACFT advised to use tie-down near SkyFuel APN due to heavy prop wash from rotary ACFT.

FLIGHT PROCEDURES

Right hand CCTS RWY 05 and RWY 35.

CTAF - AFRU 119.3

ADDITIONAL INFORMATION

Wildlife hazard exists. Refer to NOTAM for seasonal INFO.

CHARTS RELATED TO THE AERODROME

1. WAC 3469, 3470.
 2. Also refer to AIP Departure and Approach Procedures.
-