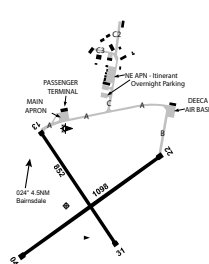


BAIRNSDALE**ELEV 165****AVFAX CODE 3019**

VIC
375315S 1473404E UTC +10 YBNS
VAR 13 DEG E CERT
AD OPR East Gippsland Shire Council, PO Box 1618, Bairnsdale, VIC,
3875. ARO 0447 132 980: Back Up 0438 497 697. Website:
www.eastgippsland.vic.gov.au/building-and-development/aerodromes.

REMARKS

CTC ARO for pin coded gate
a. FM APN to terminal; and
b. FM secondary APN to landside.

HANDLING SERVICES AND FACILITIES

H24 World Fuel Services AVGAS and JET A1 bowers. WFS carnet card, V and MC accepted. PH: 0448 505 577.

PASSENGER FACILITIES

AC/RF/WC/LG (H24 CCTV). TX/HC not readily AVBL, CTC details on LG notice board.

METEOROLOGICAL INFORMATION PROVIDED

- TAF CAT C, METAR/SPECI.
- AWIS PH 03 8470 3201 - Report faults to BoM.
- AWIS FREQ 133.725 (Requires one-second pulse to activate). AWIS will transmit for 90 SEC - Report faults to AD OPR.

PHYSICAL CHARACTERISTICS

04/22	042	36a	PCN 11 /F /B /560 (81PSI) /T Sealed	WID 18	RWS 90
13/31	132	28a	PCN 11 /F /B /550 (80PSI) /T Sealed	WID 18	RWS 80

AERODROME AND APPROACH LIGHTING

RWY 04/22 LIRL PAL+AA 123.9 SDBY PWR AVBL
RWY 04/22 edge light spacing: 60M.

OTHER LIGHTING

- SDBY PWR switchover time: 5 SEC.
- TWY LGT: Blue edge. Activation by PAL 123.9.
- Northern half of RWY 13 after RWY intersection, TWY LGT only no RWY LGT for night OPS.

ATS AND AERODROME COMMUNICATION FACILITIES

FIA MELBOURNE CENTRE 124.0 On ground (dependent on ACFT location)

LOCAL TRAFFIC REGULATIONS

- All overnight parking, CTC ARO.
- In ground tie down points AVBL at secondary APN, CTC ARO for INFO.
- HEL parking, CTC ARO.
- RWS not prepared for TKOF and landings.

CTAF 126.7**ADDITIONAL INFORMATION**

- Ultralight ACFT OPS at AD.
- Wildlife activity birds (magpies and cockatoos) and kangaroos LCA in VCY of RWY and TWY.
- Model ACFT OPR WI 1,000M RAD of PSN 375630.00S 1473200.00E BRG 192 MAG 3.7NM FM ARP SFC to 1,500FT AGL.
- Increased HEL OPS during summer season for fire EMERG.
- ACFT OPR above published physical characteristics, CTC ARO for pavement concession.

CHARTS RELATED TO THE AERODROME

- WAC 3470.
- Also refer to AIP Departure and Approach Procedures.