

ALBURY**ELEV 539****AVFAX CODE 2234**

NSW

UTC +10

YMAY

360404S

1465729E

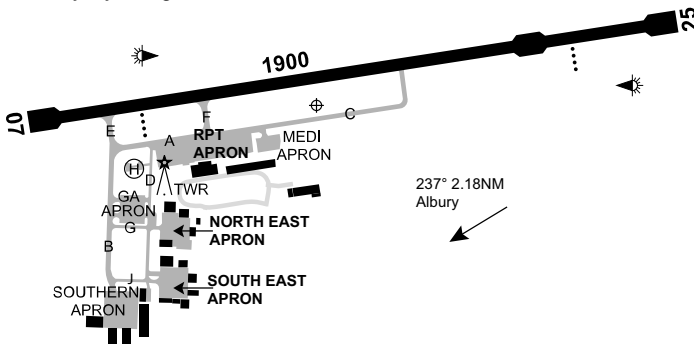
VAR 12 DEG E

CERT

AD OPR Albury City Council, PO Box 323, Albury, NSW, 2640. Email:

npolitis@alburycity.nsw.gov.au. PH Manager 02 6023 8111. ARO 0418 691 776: 0428 691 801.

Website: www.alburycity.nsw.gov.au.

**REMARKS**

- AD Charges: refer to website.
- This AD is a Security Controlled Airport. All pilots and operators must possess and display a current Aviation Security Identification Card (ASIC) when airside, and wear a high visibility safety vest while on APN area.

HANDLING SERVICES AND FACILITIES

World Fuel Services: JET A1 Tanker Refueller, AVGAS trailer 24HR card swipe bowser.

Manned 0800-1700 Local MON-FRI and 0800-1200 Local SAT/SUN. 24HR Duty Refueller

0428 567 599, VHF 130.625, Email: alburyaviationfuels@gmail.com.

Aero Refuellers: H24 JET A1 and AVGAS by tanker, 1HR PN, 24HR Duty Refueller 0413 003 808.

Manned 0800-1700 Local MON-FRI and 0800-1200 Local SAT/SUN. AH call out fee applies.

Email: admin@aerorefuellers.com.au.

Surefire Aviation Services - Full FBO services and lounge amenities to CIVIL and MIL ACFT up to

5,700KG 2200 – 0600 UTC MON-FRI, 1 HR earlier HDS. AH and ACFT up to 50,000KG approval

required FM AD OPR with 6HR PN. Parking, short-term hangarage, catering, cleaning, courtesy

car, direct and airside vehicle access/escort AVBL. Email: contact@surefiresg.com.au or

PH: 1300 030 906, located NE APN.

AERODROME OBSTACLES

- Mast on building BRG 037 MAG 464M FM ARP. Infringes TNS by 4.9FT.
- Anemometer BRG 242 MAG 650M FM ARP. Infringes TNS by 0.6FT.
- Lit towers
 - 200FT AMSL BRG 010 MAG 1,590M FM ARP.
 - 953FT AMSL BRG 204 MAG 2,870M FM ARP.
 - 953FT AMSL BRG 214 MAG 2,490M FM ARP.
 - 3 x TWR 1,713FT AMSL BRG 351 MAG 5,300M FM ARP.
- Lit poles
 - 738FT AMSL BRG 050 MAG 2,740M FM ARP.
 - 1,250FT AMSL BRG 083 MAG 8,160M FM ARP.
 - 1,470FT AMSL BRG 190 MAG 7,500M FM ARP.
 - 1,031FT AMSL BRG 251 MAG 5,180M FM ARP.
 - 1,031FT AMSL BRG 256 MAG 5,100M FM ARP.
 - 1,031FT AMSL BRG 261 MAG 5,000M FM ARP.

METEOROLOGICAL INFORMATION PROVIDED

1. TAF CAT B, METAR/SPECI.
2. AWIS PH 02 9353 6400 - Report faults to BoM.
3. AWIS FREQ 134.525 (requires one-second pulse to activate) - Report faults to AD OPR.

PHYSICAL CHARACTERISTICS

07/25 069 62a PCN 29 /F /C /1400 (203PSI) /T Grooved WID 30 RWS 150
Turn pads each end and 400M from RWY 25 THR, 45M WID.

AERODROME AND APPROACH LIGHTING

| | | | | |
|-----------|---------|-----------------|---------------|---------------|
| RWY 07/25 | MIRL | AFRU+PAL 123.25 | | SDBY PWR AVBL |
| RWY 07/25 | RTIL | AFRU+PAL 123.25 | | SDBY PWR AVBL |
| RWY 07 | PAPI(1) | AFRU+PAL 123.25 | 3.0 DEG51.6FT | SDBY PWR AVBL |
| RWY 25 | PAPI(2) | AFRU+PAL 123.25 | 3.0 DEG51.4FT | SDBY PWR AVBL |

- (1) Right side.
- (2) Left side. PAPI RWY 25 not to be used beyond 3NM FM AD when R368 ACT (SFC-2200).
 1. RWY edge light spacing: 07/25: 60M.
 2. AFRU+PAL AVBL outside TWR HR.
 3. RWY 07/25: Outside TWR HR PAPI Stage 2 MAN or PAL, SDBY PWR AVBL supplied by AD generator in the event of mains PWR failure.

OTHER LIGHTING

ABN OCC 6 W

1. SDBY PWR switchover time: 1 SEC during LVO up to 15 SEC OT.
2. No RWY centreline lights are provided.
3. TWY LGT: Blue edge on TWY A, B, C, E, F and J. Blue reflective edge on TWY D.
4. PTBL battery operated EMERG lighting AH Phone 0418 691 776.

ATS AND AERODROME COMMUNICATION FACILITIES

| | | |
|------|------------------|----------------------------------|
| FIA | MELBOURNE CENTRE | 125.2 On ground (outside TWR HR) |
| ATIS | ALBURY ATIS | 115.6 133.85 |
| SMC | ALBURY GROUND | 121.8 |
| TWR | ALBURY TOWER | 123.25 |

1. TWR HR:
 - a. MON-FRI: 2015-1030 UTC.
 - b. SAT:2300-0700 UTC.
 - c. SUN: 2300-1030 UTC.
 Phone 02 6020 7101^

Note: All times 1HR earlier during HDS. TWR HR may change at short notice, check status of airspace with ATS or Albury ATIS.

2. Albury TWR provides combined TWR and APP CTL services within Class D airspace, 4,500FT AMSL and BLW DRG TWR HR. CTC TWR for clearance.
3. Outside TWR HR, Albury Class C and D airspace 8,500FT AMSL and BLW becomes Class G.

RADIO NAVIGATION AND LANDING AIDS

| | | | | | |
|-----|----|------------|-----------|------------|-----|
| DME | AY | 115.6/103X | 360405.2S | 1465758.3E | (2) |
| VOR | AY | 115.6 | 360404.8S | 1465757.9E | (1) |

- (1) 259/0.4 to ARP
- (2) Antenna ELEV 550FT.

LOCAL TRAFFIC REGULATIONS

1. RWY grass strips not MNTN for ACFT OPS.
2. TWY A, B, C, E, F and J AVBL to ACFT ABV 5,700KG.
3. TWY D and G not AVBL to ACFT ABV 5,700KG.
4. TWY D not AVBL to ACFT with wingspan greater than 15M.
5. Intersection DEP RWY 07 permitted FM TWY E, refer to RDS.
6. All ACFT ABV 5,700KG must only conduct 180 DEG turns at RWY 07/25 threshold or turning nodes.
7. Training circuits not permitted MON-SUN 1100-2100 UTC (1HR earlier HDS).
8. **Instrument approach training**
All ACFT planning practice instrument APCH during TWR HRS require prior ATC approval. Pilots must book a slot online at www.nsw.bookawk.com.

FLIGHT PROCEDURES**1. LOW VISIBILITY OPERATIONS**

- a. LVO AVBL during TWR HR
 - b. RV assessment measurements AVBL.
 - c. Preparations for the activation of LVP are commenced when the visibility has reduced to 1,500M or less, and/or cloud ceiling is 200FT or less and further reducing. This ensures that the LVP are in force at or just prior to the visibility reducing to 800M.
 - d. When visibility is less than 800M, ATC will limit vehicle access on the manoeuvring area to the Airport Operations Officer and RFFS/other EMERG vehicles.
 - e. Aircraft OPS in VIS less than 800M when ATC is not operating by prior arrangement only, contact aerodrome operator.
 - f. Low VIS DEP on RWY 07/25 not AVBL BLW 550M VIS.
2. Right hand circuits RQ when OPR RWY 07, except as directed by ATC.
 3. Simulation of ENG failure after TKOF RWY 25 must only be initiated:
 - a. In HJ only
 - b. Not BLW 1,500FT AMSL

CTAF - AFRU 123.25

Outside TWR HR.

ADDITIONAL INFORMATION

1. Wildlife hazard exists. Most common species: galahs, ibis and ducks.
2. Model ACFT OPR HJ WI 500M RAD Ettamogah BRG 355 MAG 3.85NM FM AD up to 400FT AGL.
3. Caution - sections of TWY C not fully visible to the control tower.

CHARTS RELATED TO THE AERODROME

1. WAC 3470.
 2. Also refer to AIP Departure and Approach Procedures.
 3. Aerodrome Obstruction Chart Type A: RWY 07/25, Edition 2, SEP 2015.
-