

**MORUYA****ELEV 19****AVFAX CODE 2123**

NSW

UTC +10

YMYR

355351S

1500844E

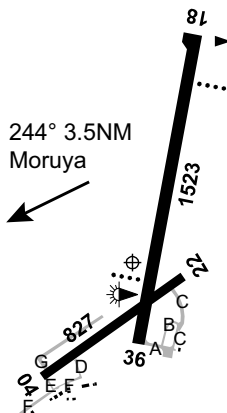
VAR 13 DEG E

CERT

AD OPR Eurobodalla Shire Council, PO Box 99, Moruya, NSW, 2537. Email:

airport@esc.nsw.gov.au. ARO Phone/Fax 4474 2095: 0409 037 520 (H24). Council PH 02 4474

1000: AH EMERG 1800 755 760.

**REMARKS**

- AD Charges: All ACFT
- This AD is a Security Controlled Airport.

**HANDLING SERVICES AND FACILITIES**

World Fuel Services: H24 self-serve JET A1, AVGAS, phone 0409 037 520, card swipe accepts Mastercard, Visa and World Fuel Services cards. Call-out fee applies.

**PASSENGER FACILITIES**

TX 02 4474 3455/HC 02 6495 3444.

**AERODROME OBSTACLES**

Lit TWR 186 DEG MAG 1.4NM FM ARP 342FT AMSL.

**METEOROLOGICAL INFORMATION PROVIDED**

- TAF CAT C, METAR/SPECI.
- AWIS PH 02 9353 6436 - Report faults to BoM.
- AWIS FREQ 136.6 (requires one-second pulse to activate) - Report faults to AD OPR.

**PHYSICAL CHARACTERISTICS**

04/22	043	27a	5700/450 (65PSI)	WID 18	RWS 90
18/36	179	50a	PCN 10 /F /B /655 (95PSI) /U	WID 30	RWS 150

**AERODROME AND APPROACH LIGHTING**

RWY 18/36	LIRL(1)	PAL+AA 122.4		SDBY PWR AVBL
RWY 18/36	PAPI(2)	PAL+AA 122.4	3.0 DEG39.5FT	SDBY PWR AVBL

- PAL activation - minimal delay between pulses.
  - Left side. PAL activation- minimal delay between pulses.
- RWY edge light spacing: 18/36: 60M.

**OTHER LIGHTING**

- Secondary PWR switchover time: 20 SEC.
- TWY LGT: Blue edge on main TWY BTN RWY 36 THR and RPT APN.

**ATS AND AERODROME COMMUNICATION FACILITIES**

FIA	MELBOURNE CENTRE	120.75 1,500FT
-----	------------------	----------------

**LOCAL TRAFFIC REGULATIONS**

GA PRKG on grassed areas ADJ to eastern sealed APN is preferred.

**CTAF - AFRU** 132.05

**ADDITIONAL INFORMATION**

1. Bird hazard exists.
2. Ultralight ACFT training.
3. Intensive parachute OPS GND to FL150. If unfamiliar CTC jump pilot via CTAF.

**CHARTS RELATED TO THE AERODROME**

1. WAC 3456.
  2. Also refer to AIP Departure and Approach Procedures.
-