

ESPERANCE**ELEV 471****AVFAX CODE 6302**

WA

UTC +8

YESP

334104S

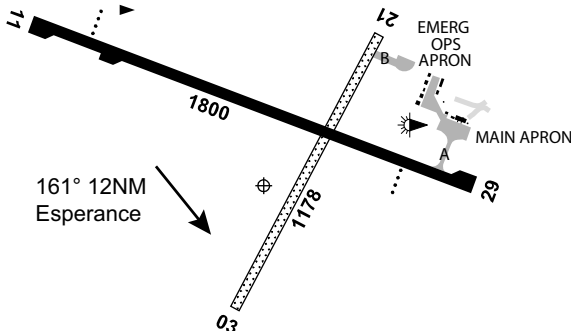
1214922E

VAR 0 DEG E

CERT

AD OPR Shire of Esperance, PO Box 507, Esperance, WA, 6450. Email:

airport@esperance.wa.gov.au. ARO 0428 935 618. Website: www.esperance.wa.gov.au.

**REMARKS**

- AD Charges - refer website.
- This AD is a Security Controlled Airport.

HANDLING SERVICES AND FACILITIES

AIR BP: 0000-0900 UTC MON-FRI, 0000-0200 UTC SAT, SUN and PH. JET A1 60MIN PN REQ. H24 AVGAS. AIR BP Carnet swipe bowser, 60MIN PN REQ for credit card and cash sales. Call-out fee applies outside normal HR. Mobile 0428 935 618.

AUSFLIGHT Ground Handling Services: Availability O/R. Mobile 0467 555 105.

Email: charterrepr@ausflighthandling.com.au.

PASSENGER FACILITIES

TX(08 9071 1782)/HC/LG/RF/WC.

AERODROME OBSTACLES

- Trees 33FT AGL BRG 103 MAG 0.44NM FM ARP to BRG 105 MAG 0.53NM FM ARP. Infringes TNS RWY 11/29.
- Primary WDI 29.8FT AGL BRG 071 MAG 0.28NM FM ARP. Infringes TNS by 1FT.
- Unlit masts:
 - BRG 004 DEG 2.97NM FM AD 215FT AGL.
 - BRG 339 DEG 2.35NM FM AD 97FT AGL.
 - BRG 340 DEG 2.32NM FM AD 97FT AGL.
 - BRG 341 DEG 2.37NM FM AD 97FT AGL.
 - BRG 339 DEG 2.4NM FM AD 97FT AGL.
- Wind turbines (lit with red light at night):
 - BRG 166 MAG 4.4NM FM ARP 617FT AGL.
 - BRG 170 MAG 4.1NM FM ARP 617FT AGL.

METEOROLOGICAL INFORMATION PROVIDED

- TAF CAT C, METAR/SPECI.
- AWIS Phone 08 6216 2611 - Report faults to BoM.
- AWIS FREQ 123.05 - Report faults to AD OPR.

PHYSICAL CHARACTERISTICS

03/21 028 39c PCN 10 /F /B /550 (80PSI) /T Gravel
11/29 111 59a PCN 22 /F /A /1034 (150PSI) /T

WID 18 RWS 60
WID 30 RWS 150

AERODROME AND APPROACH LIGHTING

| | | | | |
|-----------|---------|-----------|-------------|---------------|
| RWY 11/29 | LIRL | PAL 121.3 | | SDBY PWR AVBL |
| RWY 11 | PAPI(1) | PAL 121.3 | 3.0 DEG51FT | SDBY PWR AVBL |
| RWY 29 | PAPI(1) | PAL 121.3 | 3.0 DEG45FT | SDBY PWR AVBL |

(1) Left side only.

OTHER LIGHTING

- Secondary PWR switchover time: 10 SEC.
- TWY LGT: Blue edge.

ATS AND AERODROME COMMUNICATION FACILITIES

FIA MELBOURNE CENTRE 133.2 On Ground

RADIO NAVIGATION AND LANDING AIDS

| | | | | | | |
|-----|-----|------------|-----------|------------|--------------------|-----|
| DME | ESP | 114.2/ 89X | 334042.8S | 1214918.1E | | (1) |
| NDB | ESP | 326 | 334113.1S | 1214937.6E | Range 120 (HN 110) | |
| VOR | ESP | 114.2 | 334050.1S | 1214925.6E | | |

(1) Antenna ELEV 460FT.

LOCAL TRAFFIC REGULATIONS

- PRKG Bays 1 and 2 are restricted to RPT ACFT or ACFT approved by ARO.
- PRKG Bays 1 and 1A cannot be used SIMUL.
- PRKG Bays 1A and 3 are for ACFT>5,700KG.
- Light ACFT PRKG Bays at E side of main APN. Tie-downs (not rated) provided.
- EMERG OPS APN restricted to EMERG OPS ACFT or ACFT approved by ARO only.

CTAF - AFRU 126.7**CHARTS RELATED TO THE AERODROME**

- WAC 3461.
 - Also refer to AIP Departure and Approach Procedures.
-