



**19 MAR 2026**

AWIS 133.35	FIA ML CEN 122.6	CTAF+AFRU 126.9	AFRU+PAL 126.9		Bearings are Magnetic Elevations in FEET AMSL
----------------	---------------------	--------------------	-------------------	--	--

**REFERENCE WAYPOINT WYY NDB**

25 NM MSA  
3100  
WYY NDB  
5600  
B-079° B-264°  
10 NM MSA 3100

WYY NDB 302  
NO CIRCLING

\* NO CIRCLING SOUTH OF RWY 09 / 27 & RWY 05 / 23. AD ELEV 63

**KII TO WYY**

**MISSED APPROACH:**  
TURN LEFT, TRACK 070°. CLIMB TO 3100ft.

NM TO WYY NDB	KII	15	9	5	0														
<b>CIRCLING MINIMA</b>			<b>A,B: 1180-2.4</b>		<b>C: 1270-4.0</b>		<b>D: N/A</b>												
NM TO WYY NDB	8.4	8	7	6	5	4	3	2.7											
ALT (3° APCH PATH)	3000	2870	2550	2230	1910	1600	1270	1180											

**IRSOM TO WYY**

**MISSED APPROACH:**  
TURN RIGHT, TRACK 340°. CLIMB TO 3100ft.

NM TO WYY NDB	IRSOM	15	9	5	0														
<b>CIRCLING MINIMA</b>			<b>A,B: 1210-2.4</b>		<b>C: 1270-4.0</b>		<b>D: N/A</b>												
NM TO WYY NDB	10.5	10	9	8	7	6	5	4	3	2.8	2.7								
ALT (3° APCH PATH)	3700	3550	3230	2910	2590	2270	1960	1640	1320	1270	1210								

**SECTOR A**

**MISSED APPROACH:**  
TURN LEFT, TRACK 030°. CLIMB TO 3100ft.

NM TO WYY NDB	25	15	10	5	0														
<b>CIRCLING MINIMA</b>			<b>A,B: 1180-2.4</b>		<b>C: 1270-4.0</b>		<b>D: N/A</b>												
NM TO WYY NDB	8.4	8	7	6	5	4	3	2.7											
ALT (3° APCH PATH)	3000	2870	2550	2230	1910	1600	1270	1180											

Changes: KII TO WYY TR, SECTOR A TR, MSA BRG.

WYYDG01-186

# GNSS ARRIVAL PROCEDURES WYNARD, TAS (YWYY) Page 2

19 MAR 2026

AWIS 133.35	FIA ML CEN 122.6	CTAF+AFRU 126.9	AFRU+PAL 126.9		Bearings are Magnetic Elevations in FEET AMSL
----------------	---------------------	--------------------	-------------------	--	--

25 NM MSA

10 NM MSA 3100

**REFERENCE WAYPOINT WYY NDB**

\* NO CIRCLING SOUTH OF  
RWY 09 / 27 & RWY 05 / 23.

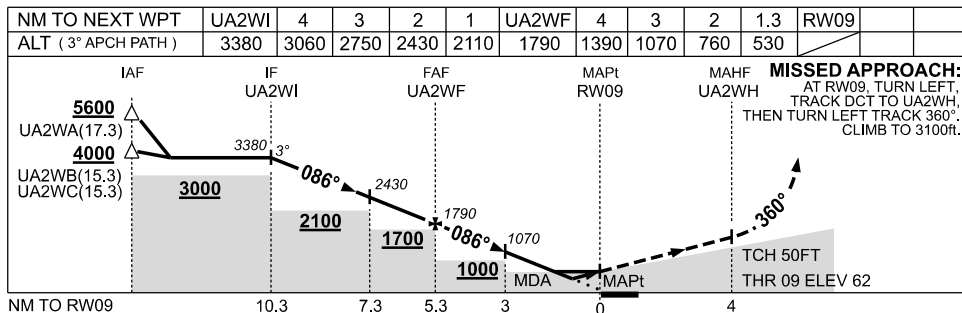
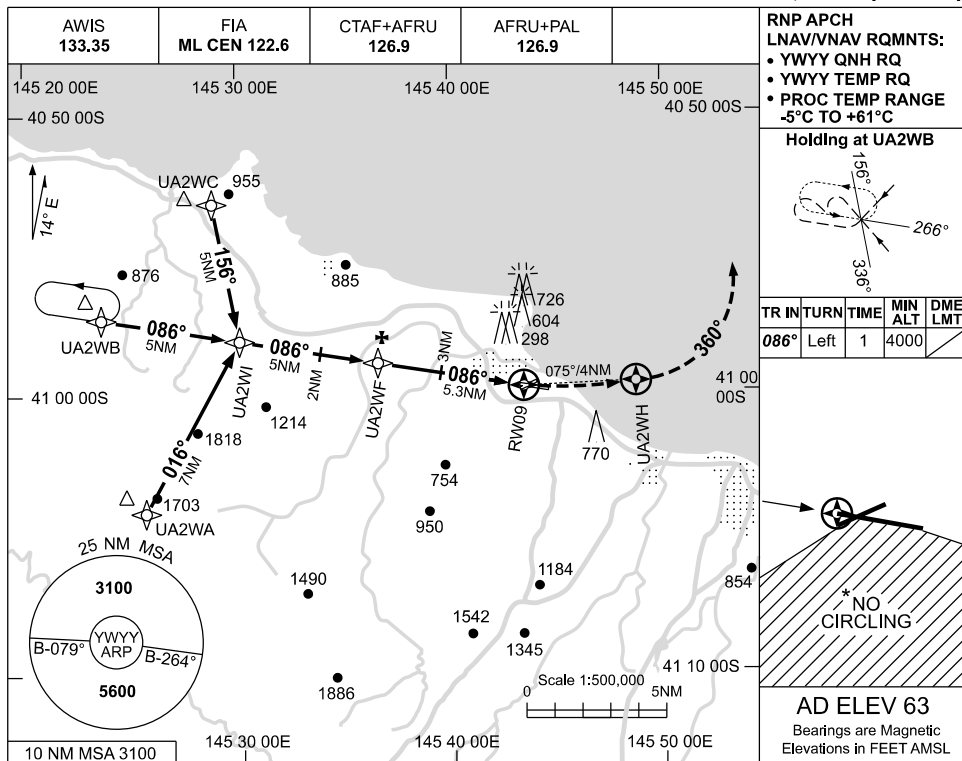
<p><b>MIKIS TO WYY NDB</b></p>		<p><b>MISSED APPROACH:</b> TRACK 311°. CLIMB TO 3100ft.</p>
NM TO WYY NDB	32 17 15 12 6 5 4 0	
<b>CIRCLING MINIMA</b>	<b>A,B: 1400-2.4</b>	<b>C: 1400-4.0</b>
NM TO WYY NDB	15.1 14 13 12 11 10 9 8 7 6 5 4 3 2 1.9	
ALT (3° APCH PATH)	5600 5240 4930 4610 4290 3970 3650 3340 3020 2700 2380 2060 1750 1430 1400	

USE QNH

RNP RWY 09

WYNYARD, TAS (YWYY)

19 MAR 2026



**NOTES**

CATEGORY	A	B	C	D
LNAV/VNAV		530 (468-2.6)		NOT APPLICABLE
LNAV		760 (697-4.0)		
CIRCLING*	1170 (1107-2.4)		1270 (1207-4.0)	
ALTERNATE		(1607-4.4)	(1707-6.0)	

- MAX IAS:  
INITIAL : 210KT.
- NO CIRCLING SOUTH OF RWY 09 / 27 & RWY 05 / 23.

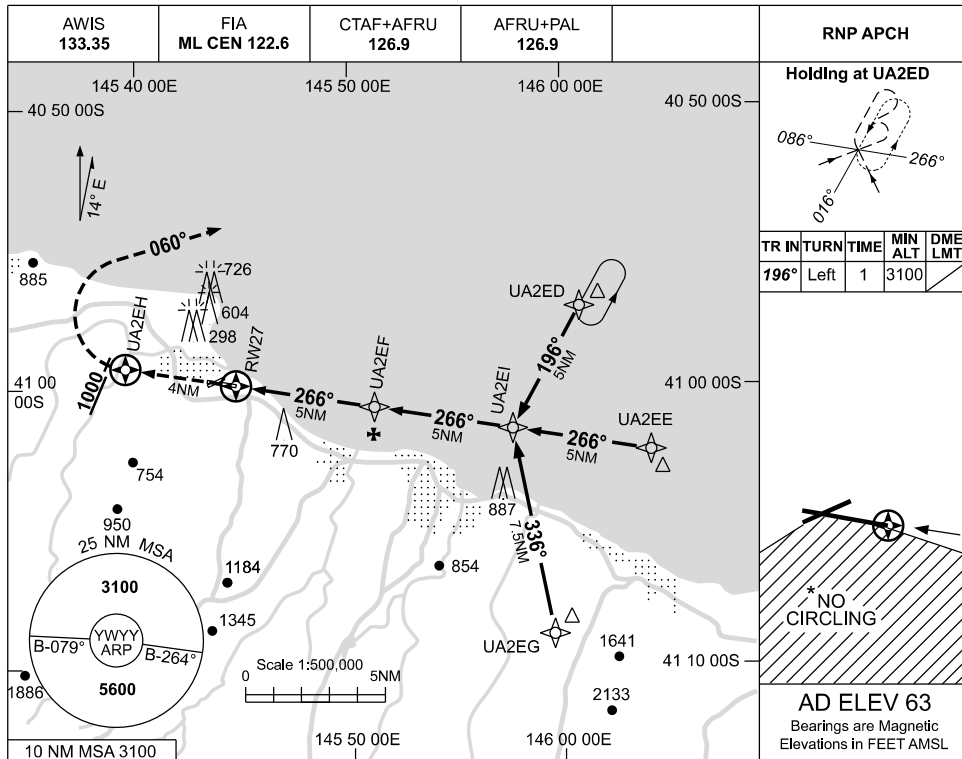
Changes: MSA BRG, VAR, OBST, Editorial.

WYYGN01-186

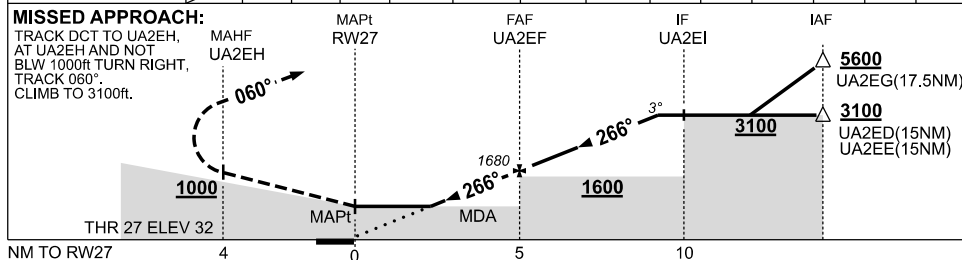
USE QNH

RNP RWY 27  
WYNYARD, TAS (YWYY)

19 MAR 2026



NM TO NEXT WPT	RWY27	1.7	2	3	4	UA2EF	1	2	3	4	4.5		
ALT (3° APCH PATH)		630	720	1040	1360	1680	1990	2310	2630	2950	3100		



NOTES

CATEGORY	A	B	C	D
LNAV	630 (598-3.4)			NOT APPLICABLE
CIRCLING *	1170 (1107-2.4)		1270 (1207-4.0)	
ALTERNATE	(1607-4.4)		(1707-6.0)	

- MAX IAS:  
INITIAL : 210KT.  
HOLD : 210KT.
- NO CIRCLING SOUTH OF RWY 09 / 27 & RWY 05 / 23.

Changes: MSA BRG, VAR, OBST, Editorial.

WYYGN02-186

