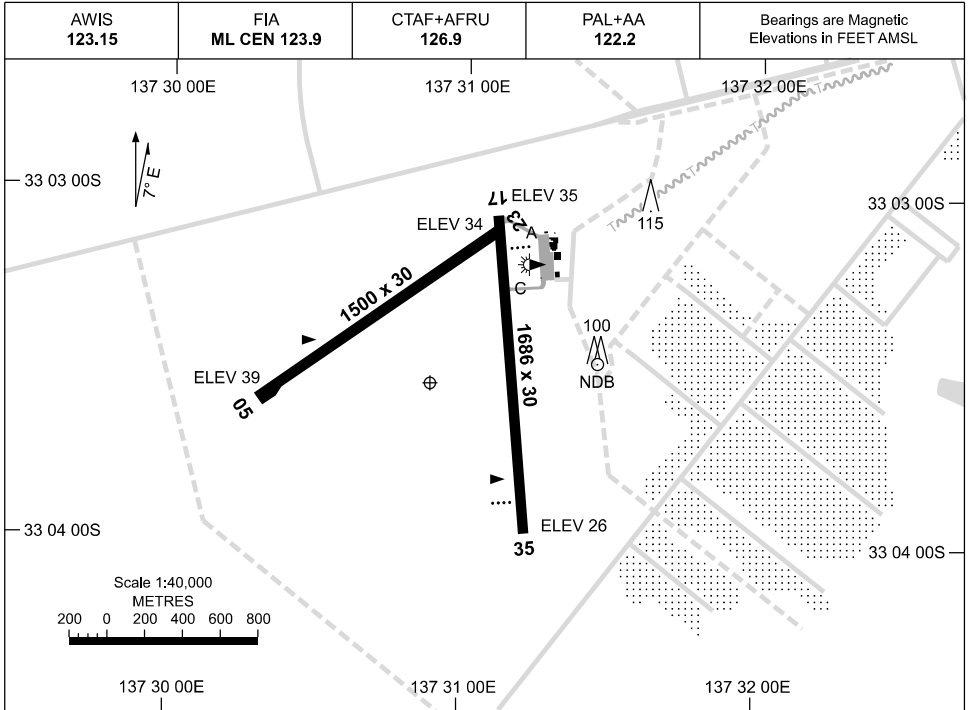


19 MAR 2026

AD ELEV 41
33 03 32S 137 30 52E

AERODROME CHART
WHYALLA, SA (YWHA)



	AERODROME LIGHTING	
RWY	TAXIWAY : BLUE EDGE TWY A AND C	
	RL : PAL+AA 122.2, SDBY (15 SEC)	
17 ¹⁶⁷	PAPI 3.0° 45FT LIRL	
347 35	PAPI 3.0° 45FT LIRL	
05 ⁰⁴⁷	NIL	
227 23	NIL	

NOTES

1. FIA FREQ 123.9 AVBL CIRCUIT AREA.
2. AWIS RQ ONE PULSE TO ACTIVATE.

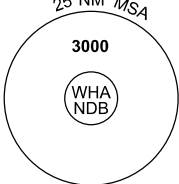
Changes: PAL+AA.

WHAAD01-186

GNSS ARRIVAL PROCEDURES WHYALLA, SA (YWHA)


19 MAR 2026

AWIS 123.15	FIA ML CEN 123.9	CTAF+AFRU 126.9	PAL+AA 122.2		Bearings are Magnetic Elevations in FEET AMSL
----------------	---------------------	--------------------	-----------------	--	--------------------------------------------------

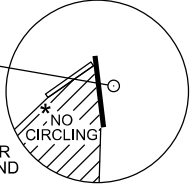


25 NM MSA
3000
WHA NDB

REFERENCE WAYPOINT WHA NDB



WHA NDB 371




NO CIRCLING

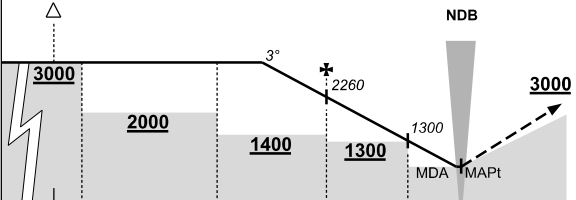
* NO CIRCLING IN SECTOR WEST OF RWY 17 / 35 AND SOUTH OF RWY 05 / 23.

10 NM MSA 1900

AD ELEV 41

SECTOR A





3°

2260

1300

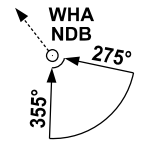
1300 MDA MAPt

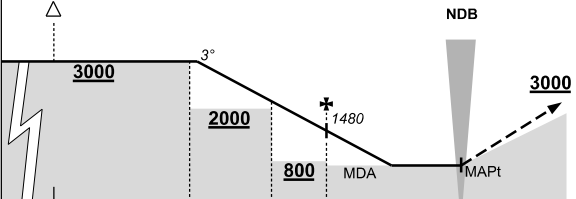
MISSED APPROACH:

CLIMB ON TRACK TO 3000ft.

NM TO WHA NDB	25	15	14	9	5	2	0											
CIRCLING MINIMA				A,B: 720-2.4		C: 1240-4.0		D: N/A										
NM TO WHA NDB	7.3	7	6	5	4	3	2	1.8	0.2									
ALT (3° APCH PATH)	3000	2890	2580	2260	1940	1620	1300	1240	720									

SECTOR B





3°

1480

800

800 MDA MAPt

MISSED APPROACH:

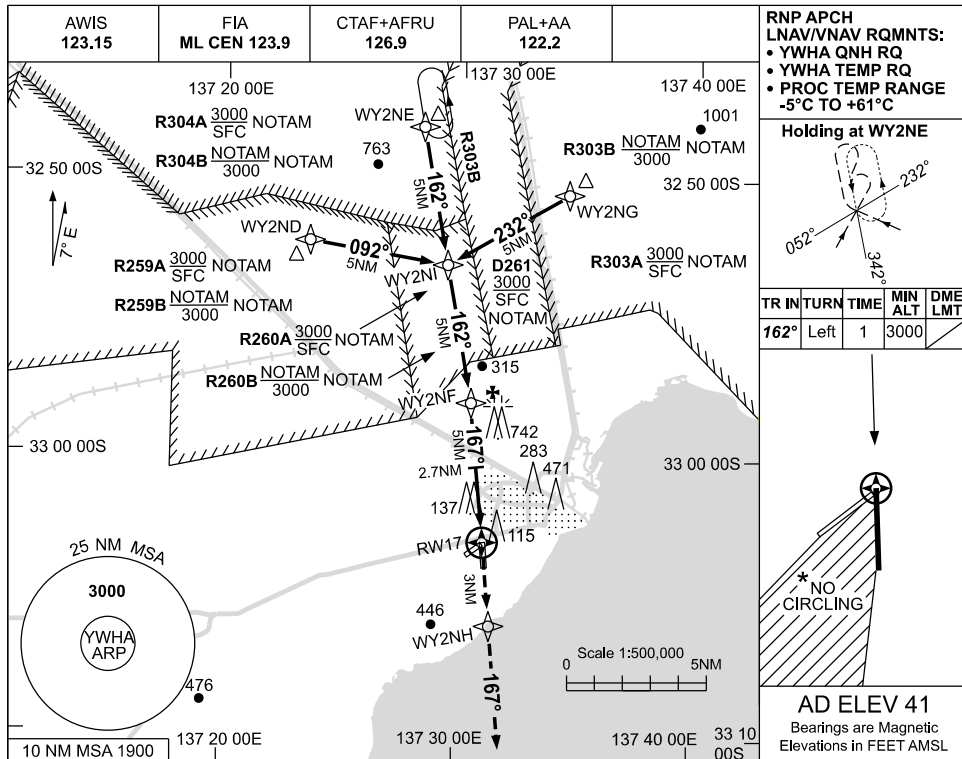
CLIMB ON TRACK TO 3000ft.

NM TO WHA NDB	25	15	10	7	5	2	0											
CIRCLING MINIMA				A,B: 710-2.4		C: 1240-4.0		D: N/A										
NM TO WHA NDB	9.8	9	8	7	6	5	4.2	3	2.6									
ALT (3° APCH PATH)	3000	2750	2430	2110	1800	1480	1240	840	710									

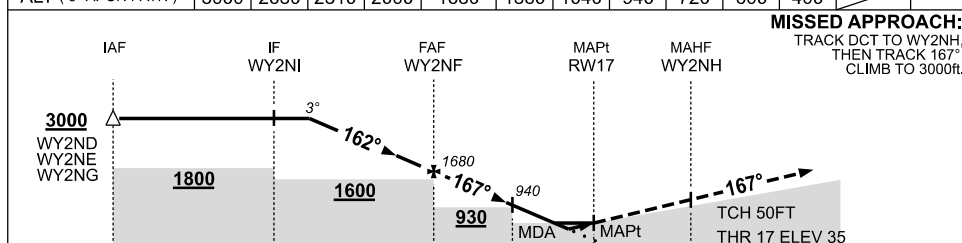
USE QNH

RNP RWY 17
WHYALLA, SA (YWHA)

19 MAR 2026



NM TO NEXT WPT	4.2	3	2	1	WY2NF	4	3	2.7	2	1.6	1	RW17
ALT (3° APCH PATH)	3000	2630	2310	2000	1680	1360	1040	940	720	600	400	



NM TO RW17: 15, 10, 5, 2.7, 0, 3

NOTES

- MAX IAS:
HOLDING : 210KT.
INITIAL : 210KT.
- NO CIRCLING IN SECTOR WEST OF RWY 17 / 35 AND SOUTH OF RWY 05 / 23.
- CLR RQ WHEN RESTRICTED AREAS ACT.

CATEGORY	A	B	C	D
LNAV/VNAV	400 (365-2.0)			NOT APPLICABLE
LNAV	600 (559-3.2)			
CIRCLING *	710 (669-2.4)		1240 (1199-4.0)	
ALTERNATE	(1169-4.4)		(1699-6.0)	

Changes: PAL+AA.

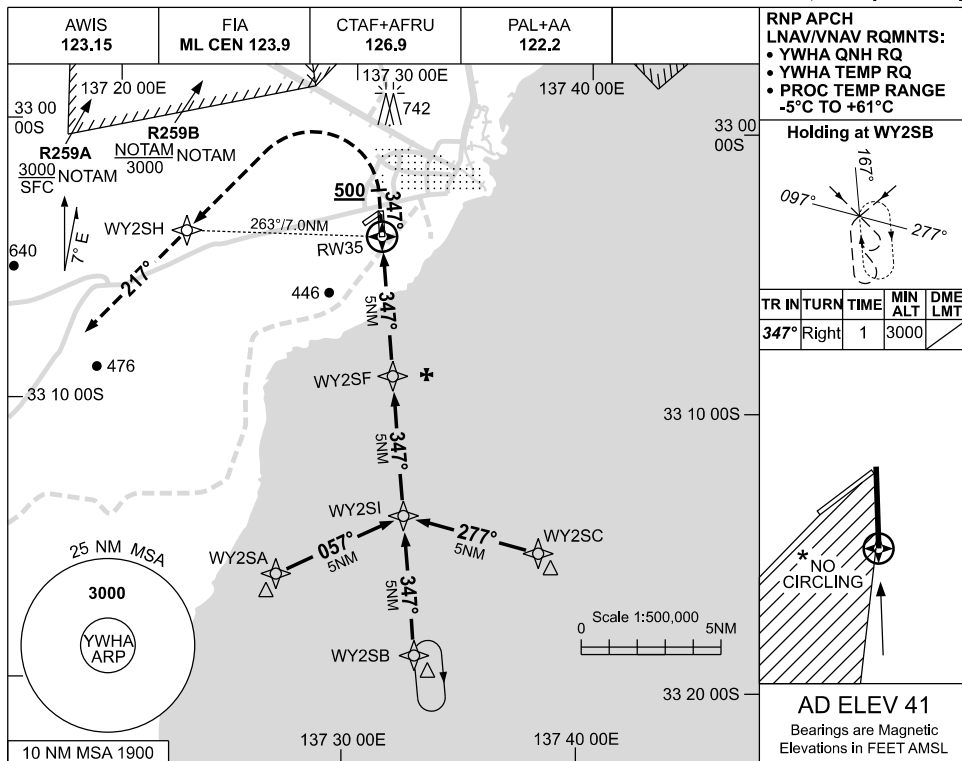
WHAGN01-186

USE QNH

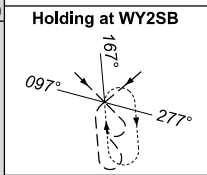
RNP RWY 35

WHYALLA, SA (YWHA)

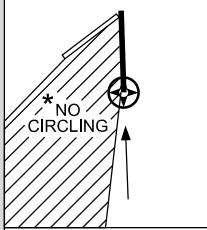
19 MAR 2026



RNP APCH
LNAV/VNAV RQMNTS:
• YWHA QNH RQ
• YWHA TEMP RQ
• PROC TEMP RANGE
-5°C TO +61°C

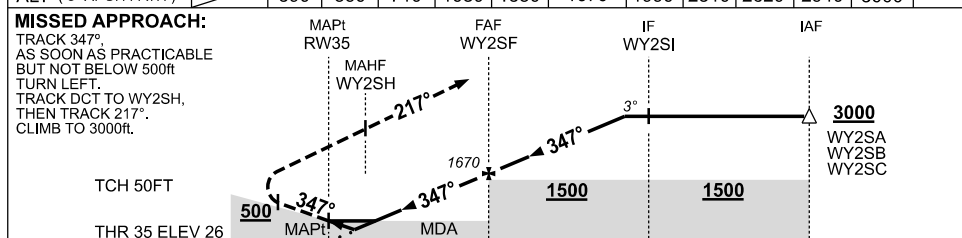


TR IN	TURN	TIME	MIN ALT	DME LMT
347°	Right	1	3000	



AD ELEV 41
Bearings are Magnetic
Elevations in FEET AMSL

NM TO NEXT WPT	RW35	1	1.5	2	3	4	WY2SF	1	2	3	4	4.2	
ALT (3° APCH PATH)		390	550	710	1030	1350	1670	1990	2310	2620	2940	3000	



NM TO RW35: 0, 5, 10, 15

- NOTES**
- MAX IAS:
INITIAL : 210KT.
MISSED APCH : 185KT.
TURN : 185KT.
 - NO CIRCLING IN SECTOR WEST OF RWY 17 / 35 AND SOUTH OF RWY 05 / 23.
 - HLDG OVERLAYS YPIR RNP RWY 08 HLDG.

CATEGORY	A	B	C	D
LNAV/VNAV		390 (364-2.0)		NOT APPLICABLE
LNAV		550 (524-3.0)		
CIRCLING *	710 (669-2.4)		1240 (1199-4.0)	
ALTERNATE	(1169-4.4)		(1699-6.0)	

Changes: PAL+AA, Editorial.

WHAGN02-186

