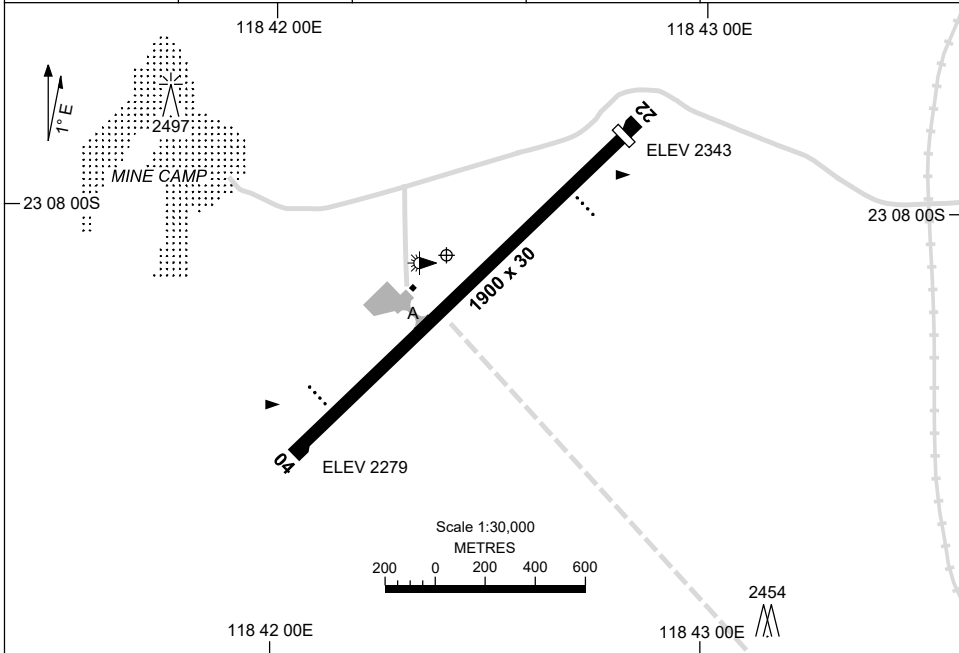


5 SEP 2024

AD ELEV 2346  
23 08 06S 118 42 24E

AERODROME CHART  
**WEST ANGELAS, WA (YANG)**

AWIS 133.875	FIA ML CEN 128.15	CTAF+AFRU 127.05	PAL+AA 119.65	Bearings are Magnetic Elevations in FEET AMSL
-----------------	----------------------	---------------------	------------------	--



<b>RWY</b>	<b>AERODROME LIGHTING</b>
	TAXIWAY : BLUE EDGE RL : PAL+AA 119.65 , EMERG ONLY , SDBY (10 SEC)
<b>04</b> <sup>045</sup>	PAPI 3.3° 53FT LIRL
<sup>225</sup> <b>22</b>	PAPI 3.3° 53FT LIRL

**NOTES**

1. AFRU NOT AVBL ON GROUND.
2. FIA FREQ 128.15 AVBL IN CIRCUIT AREA.

Changes: RWY STARTER EXTENSIONS REMOVED, Editorial.

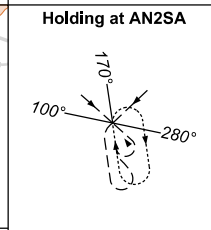
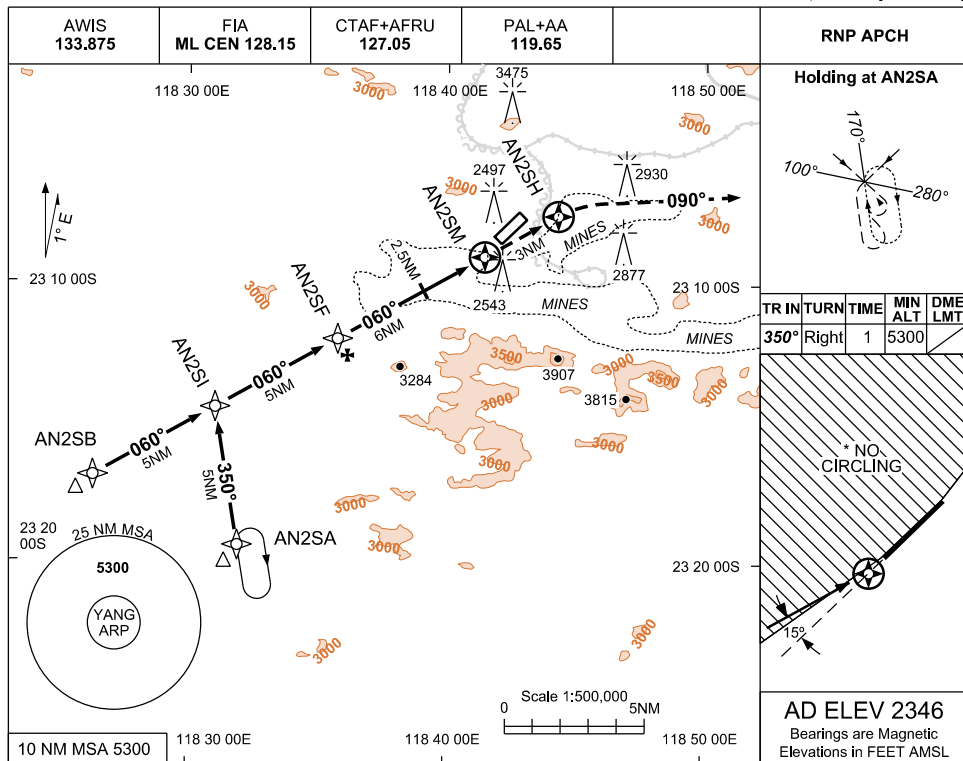
ANGAD01-180

USE QNH

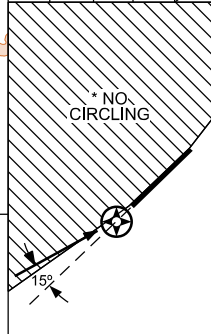
RNP RWY 04

19 MAR 2026

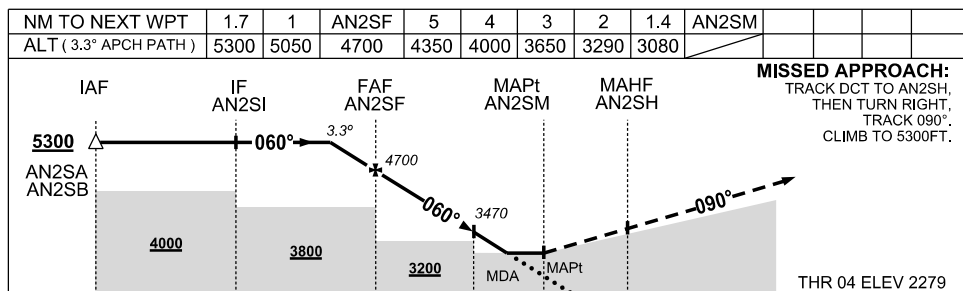
WEST ANGELAS, WA (YANG)



TR	IN	TURN	TIME	MIN ALT	DME LMT
350°	Right		1	5300	



**AD ELEV 2346**  
Bearings are Magnetic  
Elevations in FEET AMSL



**MISSED APPROACH:**  
TRACK DCT TO AN2SH,  
THEN TURN RIGHT,  
TRACK 090°.  
CLIMB TO 5300FT.

**NOTES**

- MAX IAS : INITIAL : 210KT.
- NO CIRCLING NORTH WEST OF RWY 04/22.
- CHECK BLASTING TIMES WITH A/D OPR.
- COONDEWANNA A/D 11NM NORTH EAST.
- COLOUR: SEE SPEC NOTICES.

CATEGORY	A	B	C	D
LNAV	3080 (801-4.6)			NOT AUTHORISED
CIRCLING *	3310 (964-2.4)		NOT AUTHORISED	
ALTERNATE	(1464-4.4)		NOT APPLICABLE	

Changes: OBST 2543FT

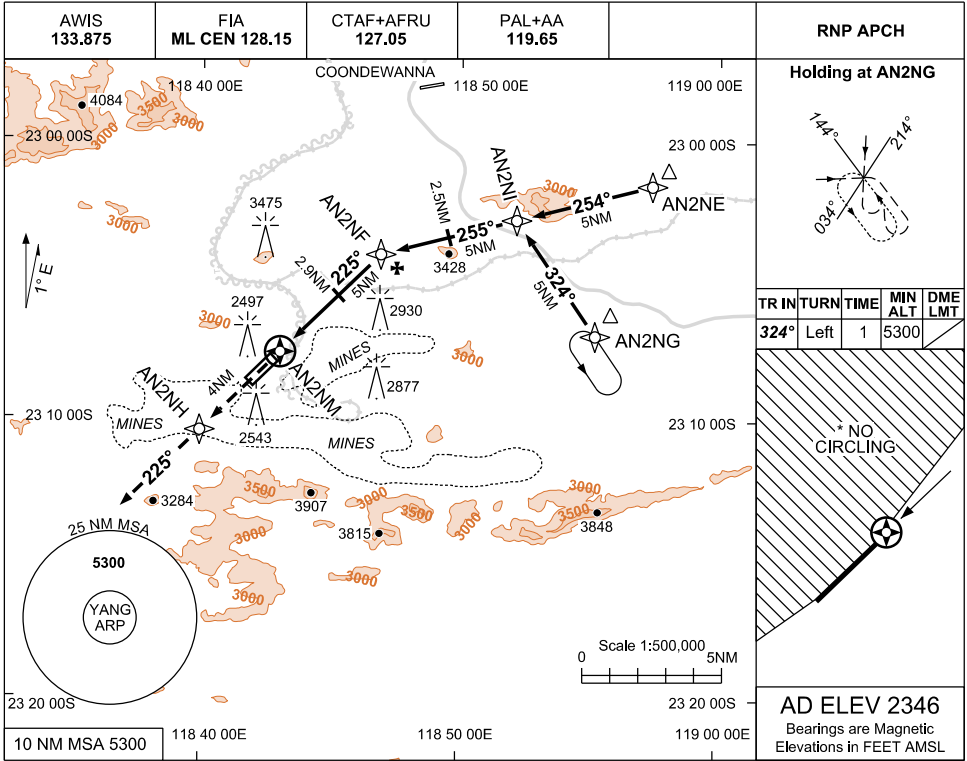
ANGGN01-186

USE QNH

RNP RWY 22

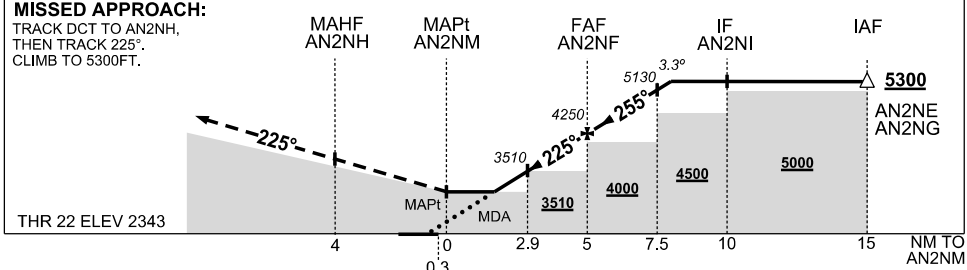
19 MAR 2026

WEST ANGELAS, WA (YANG)



AD ELEV 2346  
Bearings are Magnetic  
Elevations in FEET AMSL

NM TO NEXT WPT	AN2NM	2.2	3	4	AN2NF	1	2	3			
ALT (3.3° APCH PATH)		3260	3550	3900	4250	4600	4950	5300			



- NOTES**
- MAX IAS : INITIAL : 210KT. HOLDING : 210KT.
  - NO CIRCLING NORTH WEST OF RWY 04/22.
  - MIN MAP GRAD 3% TO 3500FT THEN 2.5%.
  - CHECK BLASTING TIMES WITH A/D OPR
  - COLOUR:** SEE SPEC NOTICES

CATEGORY	A	B	C	D
LNAV (2.5% MAP)	3310 (964-5.0)			NOT AUTHORISED
# LNAV (3% MAP)	3260 (914-5.0)			
CIRCLING *	3310 (964-2.4)		NOT AUTHORISED	
ALTERNATE	(1464-4.4)		NOT APPLICABLE	

Changes: OBST 2543FT

ANGGN02-186