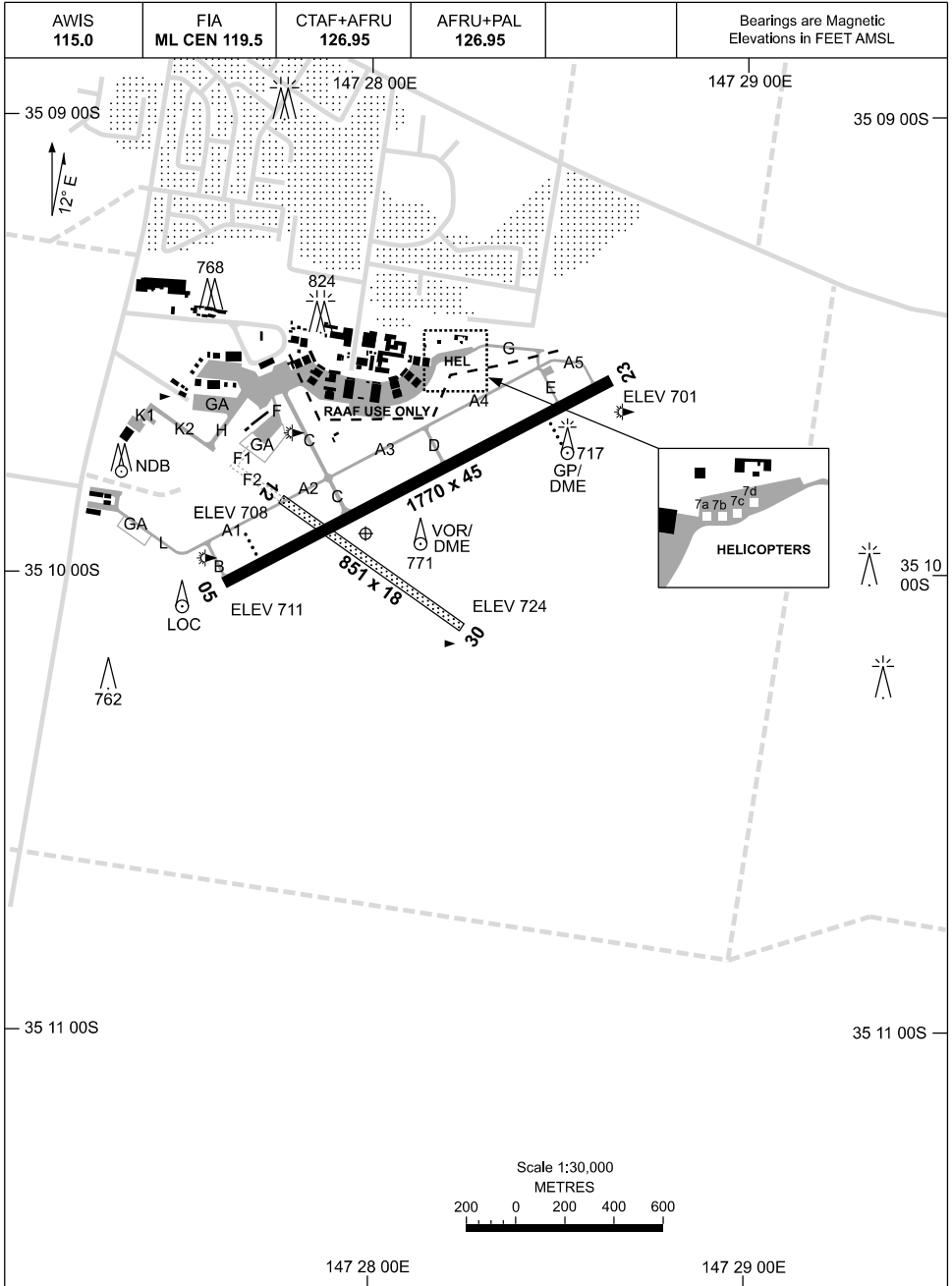


19 MAR 2026

AD ELEV 724
35 09 55S 147 27 59E

AERODROME CHART - Page 1
WAGGA WAGGA, NSW (YSWG)



Changes: DELETE AWIS NDB, Editorial.

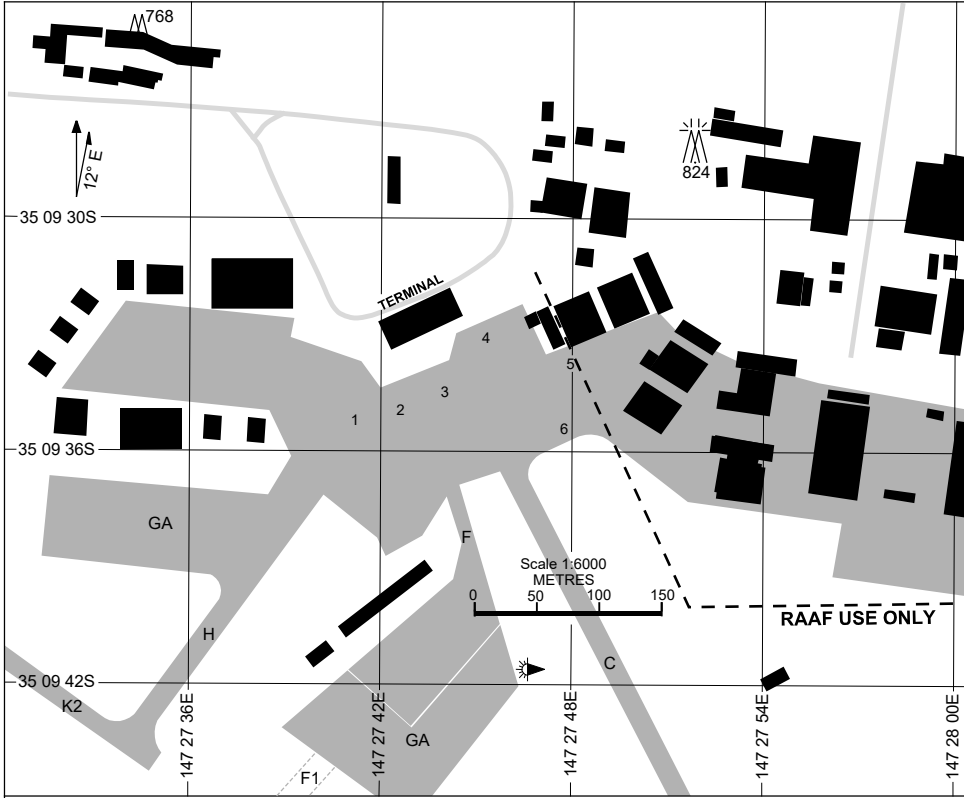
SWGAD01-186

19 MAR 2026

AWIS 115.0	FIA ML CEN 119.5	CTAF+AFRU 126.95	AFRU+PAL 126.95		Bearings are Magnetic Elevations in FEET AMSL
RWY	AERODROME LIGHTING				
	TAXIWAYS : BLUE EDGE TWY C RL : AFRU+PAL 126.95, SDBY (15 SEC), PTBL PN (ARO: 02 6938 3161)				
05 ⁰⁵⁰ 230 23	PAPI 3.0° 51FT LIRL (HN ONLY) PAPI 3.0° 51FT LIRL (HN ONLY)				
12 ¹¹³ 293 30	NIL NIL				
NOTES					

Changes: RWY BRG, DELETED AWIS NDB, Editorial.

12 JUN 2025



PARKING POSITION INFORMATION

STAND	CO-ORDINATES	ELEV (ft)	CAPACITY	HYDRANT FUEL	DOCKING SYSTEM
1	35 09 35.23S 147 27 41.22E	743	DH8D	TANKER	PILOT/MARSHALLER
2	35 09 34.96S 147 27 42.63E	745	DH8D	TANKER	PILOT/MARSHALLER
3	35 09 34.45S 147 27 44.01E	744	DH8D	TANKER	PILOT/MARSHALLER
4	35 09 33.08S 147 27 45.32E	743	DH8D	TANKER	PILOT/MARSHALLER
5	35 09 33.77S 147 27 48.01E	745	DH8D	TANKER	PILOT
6	35 09 35.42S 147 27 47.75E	746	DH8D	TANKER	PILOT

DME or GNSS ARRIVAL PROCEDURES WAGGA WAGGA, NSW (YSWG)

19 MAR 2026

AWIS 115.0	FIA ML CEN 119.5	CTAF+AFRU 126.95	AFRU+PAL 126.95		Bearings are Magnetic Elevations in FEET AMSL
---------------	---------------------	---------------------	--------------------	--	--

25 NM MSA
3100
4200
R-020° B-200°
R-175° B-355°

**DME USING WG DME
REFERENCE WAYPOINT WG VOR**

3.5 NM
* NO CIRCLING

WG NDB 221

WG VOR/DME 115.0

* NO CIRCLING IN SECTOR SOUTH OF RWY 05/23 AND RWY 12/30 BEYOND 3.5NM.

AD ELEV 724

AY TO WG

3600
3000
013°

VOR or NDB

MISSED APPROACH:

TRACK 013°. CLIMB TO 4200ft.

NM TO WG VOR	25	15	10	5	4	3	2	1.4	1.3						
CIRCLING MINIMA	A,B: 1780-2.4		C: 1810-4.0		D: 2010-5.0										
NM TO WG VOR	7	6	5	4	3	2	1.4	1.3							
ALT (3° APCH PATH)	3600	3280	2960	2640	2320	2010	1810	1780							

COR TO WG

3200
3000
036°

VOR or NDB

MISSED APPROACH:

TURN LEFT, TRACK 350°. CLIMB TO 4200ft.

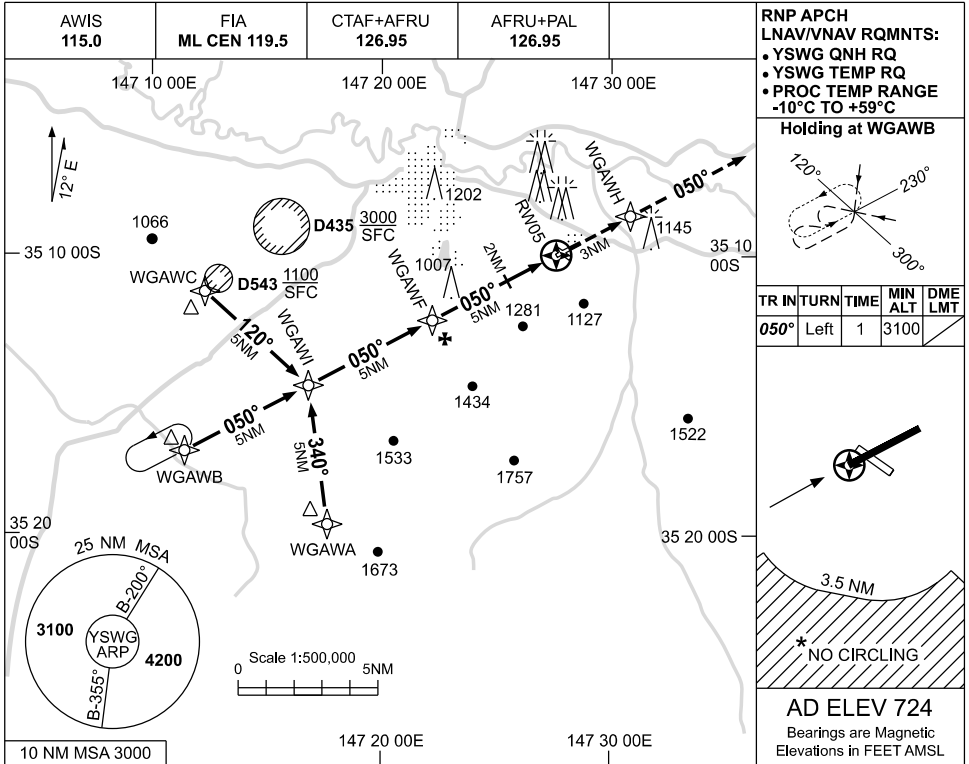
NM TO WG VOR	25	15	10	5	4	3	2	1.6	1.3						
CIRCLING MINIMA	A,B: 1710-2.4		C: 1810-4.0		D: 2010-5.0										
NM TO WG VOR	6	5	4	3	2.2	2	1.6	1.3							
ALT (3° APCH PATH)	3200	2890	2570	2250	2010	1930	1810	1710							

USE QNH

RNP RWY 05

19 MAR 2026

WAGGA WAGGA, NSW (YSWG)



RNP APCH LNAV/VNAV RQMTS:

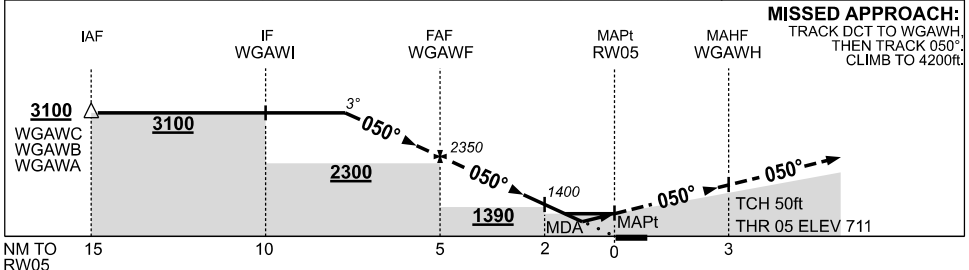
- YSWG QNH RQ
- YSWG TEMP RQ
- PROC TEMP RANGE -10°C to +59°C

Holding at WGAWB

TR	INT	TURN	TIME	MIN ALT	DME LMT
050°		Left	1	3100	

AD ELEV 724
Bearings are Magnetic
Elevations in FEET AMSL

NM TO NEXT WPT	2.3	2	1	WGAWF	4	3	2	1.8	0.9	RW05			
ALT (3° APCH PATH)	3100	2990	2670	2350	2030	1720	1400	1340	1050				



MISSED APPROACH:
TRACK DCT TO WGAWH
THEN TRACK 050°
CLIMB TO 4200ft.

TCH 50ft
THR 05 ELEV 711

NOTES

1. MAX IAS: INITIAL : 210KT.
- *2. NO CIRCLING IN SECTOR SOUTH OF RWY 05/23 AND RWY 12/30 BEYOND 3.5NM.

CATEGORY	A	B	C	D
LNAV/VNAV		1050 (339-1.9)		
LNAV		1340 (629-3.6)		
CIRCLING *	1710 (986-2.4)		1810 (1086-4.0)	2010 (1286-5.0)
ALTERNATE	(1486-4.4)		(1586-6.0)	(1786-7.0)

Changes: AWIS NDB DELETED, Editorial.

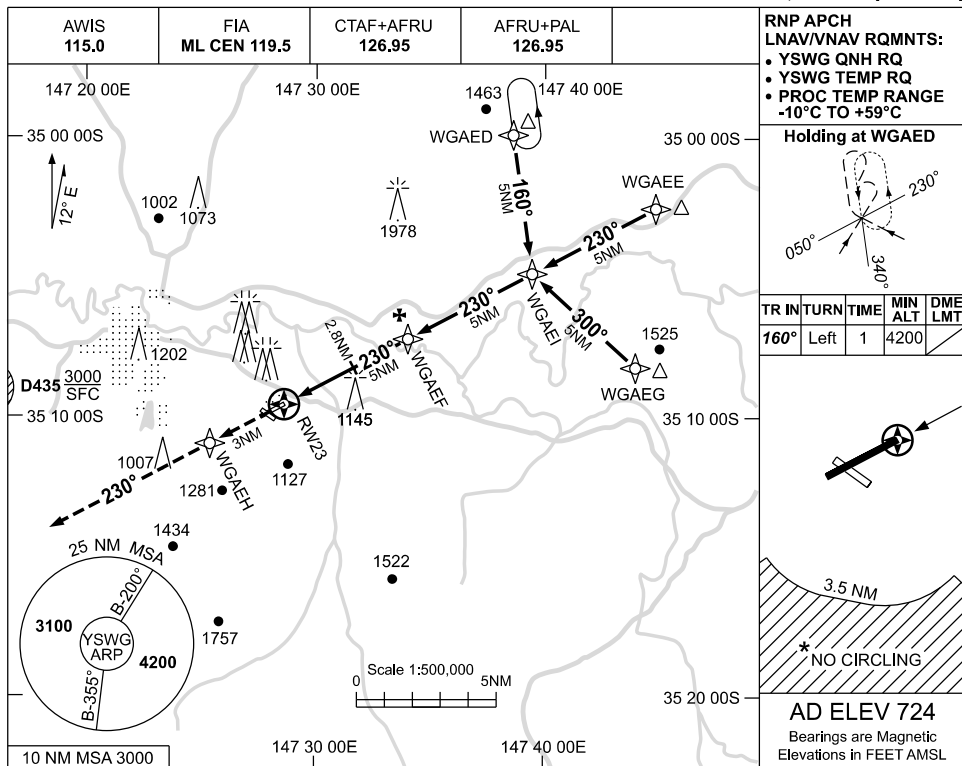
SWGGN01-186

USE QNH

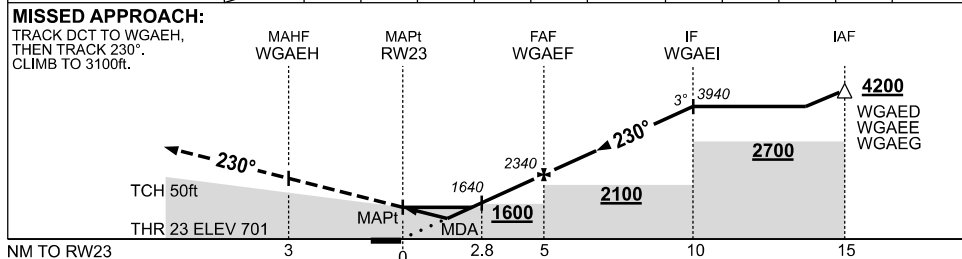
RNP RWY 23

19 MAR 2026

WAGGA WAGGA, NSW (YSWG)



NM TO NEXT WPT	RW23	1.6	2.3	2.8	3	4	WGAEF	1	2	3	4	WGAEI
ALT (3° APCH PATH)		1250	1470	1640	1710	2020	2340	2660	2980	3300	3620	3940



NOTES

CATEGORY	A	B	C	D
LNAV/VNAV		1250 (549-3.1)		
LNAV		1470 (769-4.4)		
CIRCLING *	1710 (986-2.4)	1810 (1086-4.0)	2010 (1286-5.0)	
ALTERNATE	(1486-4.4)	(1586-6.0)	(1786-7.0)	

1. MAX IAS: INITIAL : 210KT.
- * 2. NO CIRCLING IN SECTOR SOUTH OF RWY 05/23 AND RWY 12/30 BEYOND 3.5NM.

Changes: STEP DOWN FIX, AWIS NDB DELETED, Editorial.

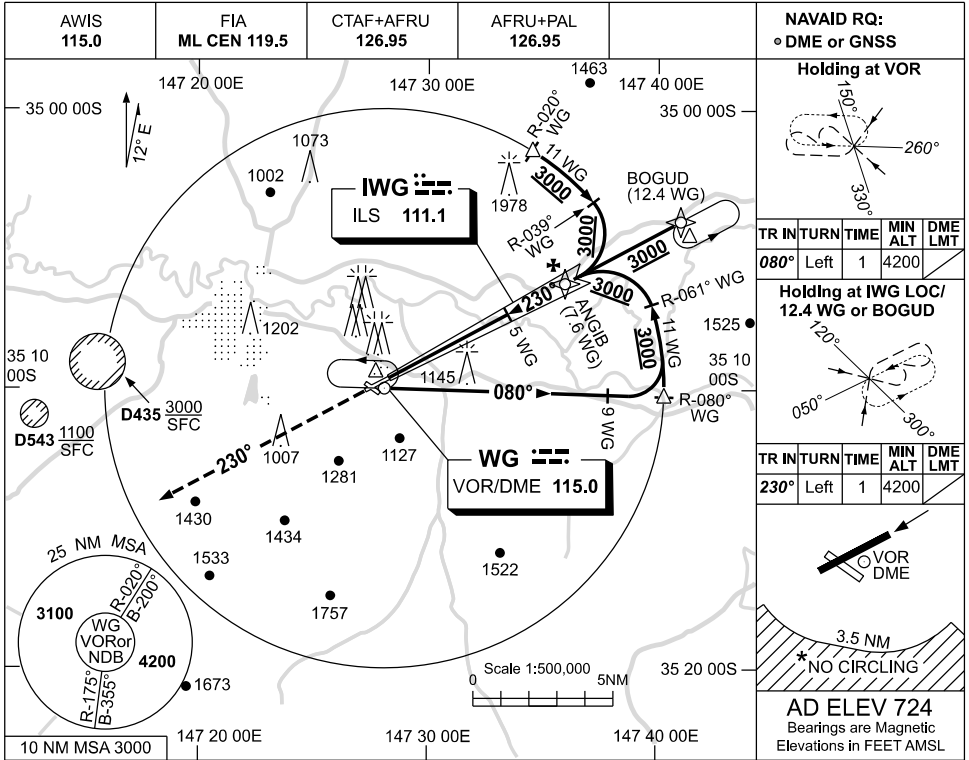
SWGNG02-186

USE QNH

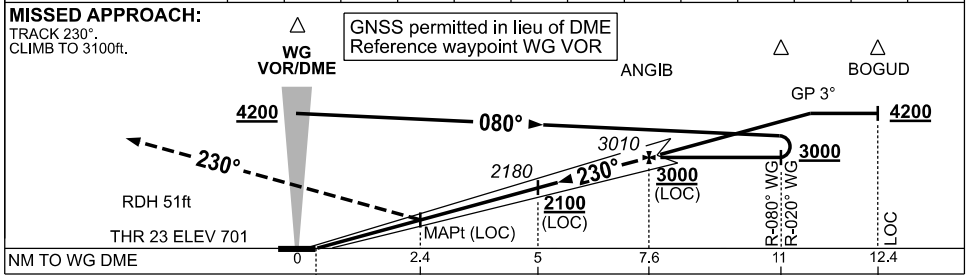
ILS-Y or LOC-Y RWY 23

19 MAR 2026

WAGGA WAGGA, NSW (YSWG)



DIST TO WG DME	2.8	3	4	5	6	7	7.6	8	9	10	11.4		
ALT (3° APCH PATH)	1470	1540	1860	2180	2490	2810	3010	3130	3450	3770	4200		



NOTES

CATEGORY	A	B	C	D
S-I ILS/DME	1051 (350) 1.9 (VIS 1.5 WITH ACTUAL QNH)			
S-I LOC/DME	1470 (769-4.4)			
CIRCLING *	1710 (986-2.4)		1810 (1086-4.0)	2010 (1286-5.0)
ALTERNATE	(1486-4.4)		(1586-6.0)	(1786-7.0)

1. MAX IAS: INITIAL : 210KT.
- * 2. NO CIRCLING IN SECTOR SOUTH OF RWY 05/23 AND RWY 12/30 BEYOND 3.5NM.

Changes: MINIMA, AWIS NDB DELETED, Editorial.

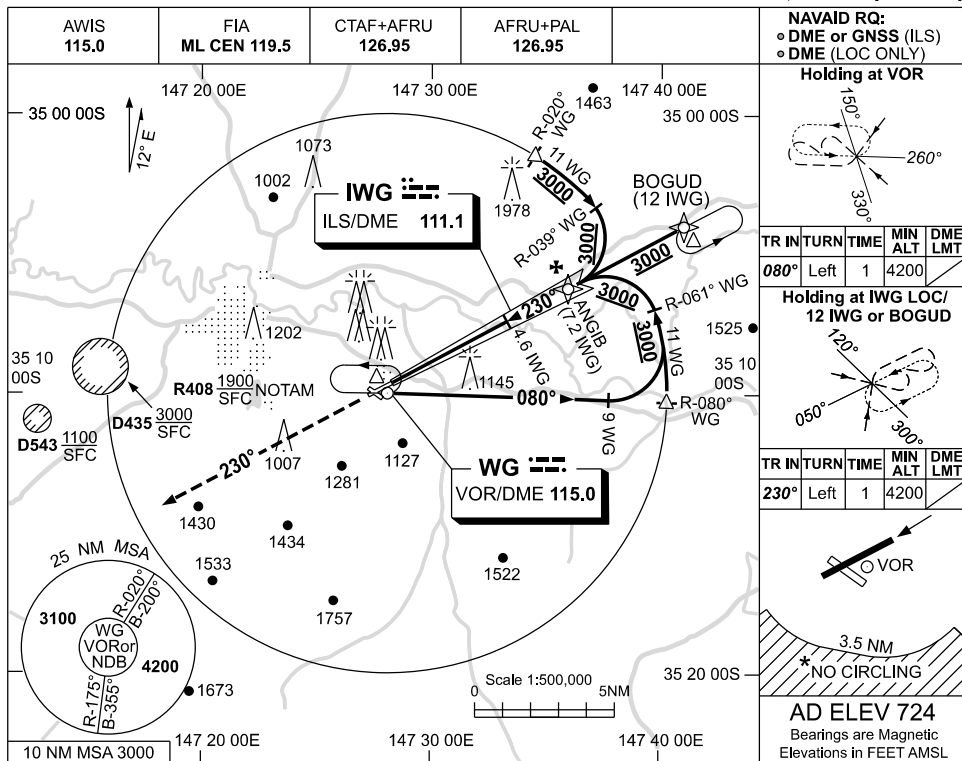
SWGII01-186

USE QNH

ILS-Z or LOC-Z RWY 23

WAGGA WAGGA, NSW (YSWG)

19 MAR 2026



NAVAID RQ:
 • DME or GNSS (ILS)
 • DME (LOC ONLY)

Holding at VOR

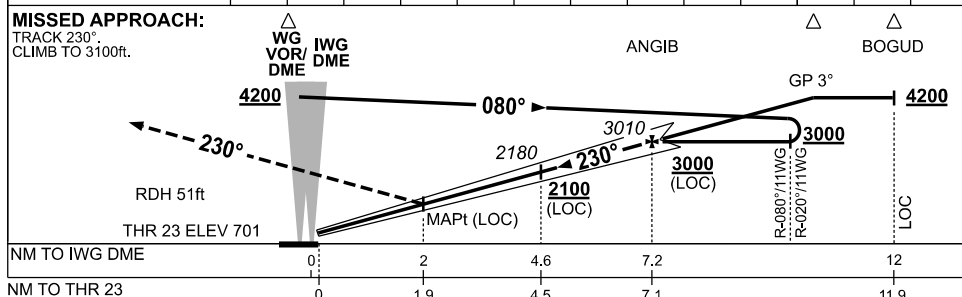
TR	TURN	TIME	MIN ALT	DME LMT
080°	Left	1	4200	

Holding at IWG LOC/ 12 IWG or BOGUD

TR	TURN	TIME	MIN ALT	DME LMT
230°	Left	1	4200	

AD ELEV 724
 Bearings are Magnetic
 Elevations in FEET AMSL

DIST TO IWG DME	2.4	3	4	4.6	6	7	7.2	8	9	10	11		
ALT (3° APCH PATH)	1470	1660	1980	2180	2620	2930	3010	3250	3570	3890	4200		



NOTES

- MAX IAS:
INITIAL : 210KT.
- NO CIRCLING IN SECTOR SOUTH OF RWY 05/23 AND RWY 12/30 BEYOND 3.5NM.

CATEGORY	A	B	C	D
S-I ILS/DME	1051 (350) 1.9 (VIS 1.5 WITH ACTUAL QNH)			
S-I LOC/DME	1470 (769-4.4)			
CIRCLING *	1710 (986-2.4)	1810 (1086-4.0)	2010 (1286-5.0)	
ALTERNATE	(1486-4.4)	(1586-6.0)	(1786-7.0)	

Changes: MINIMA, AWIS NDB DELETED, Editorial.

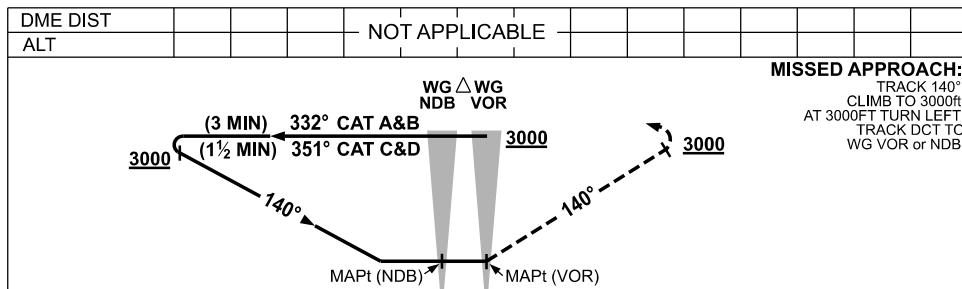
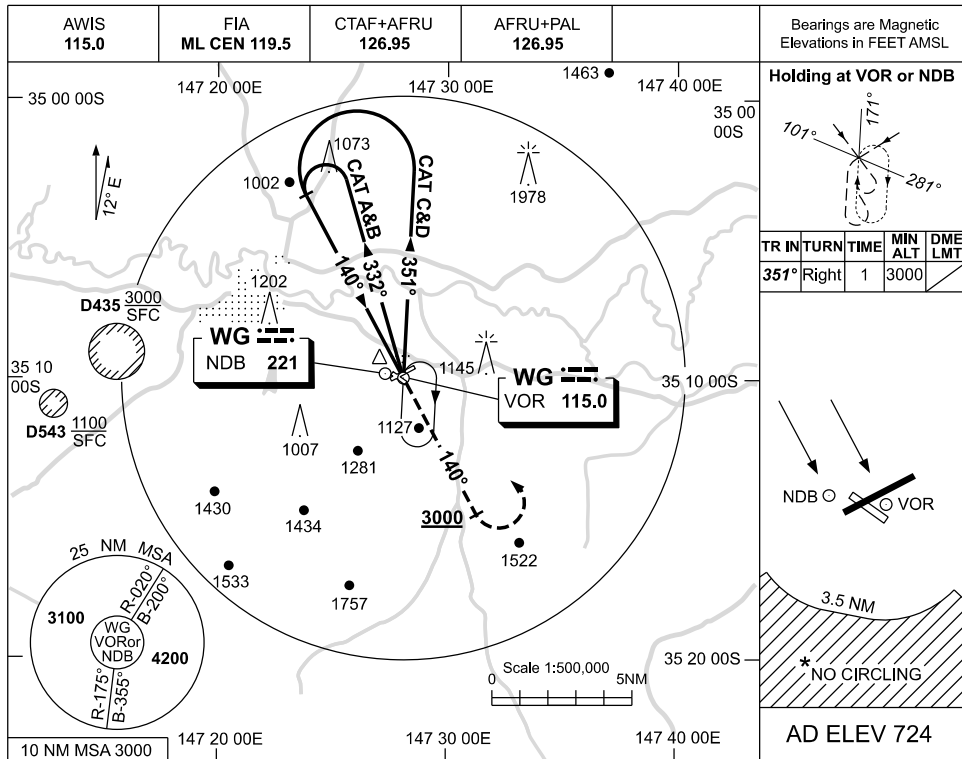
SWGII02-186

USE QNH

NDB-A or VOR-A

WAGGA WAGGA, NSW (YSWG)

19 MAR 2026



NOTES

1. MAX IAS :
HOLDING: 230KT.
INITIAL :
CAT A&B 140KT.
CAT C&D 210KT.
- * 2. NO CIRCLING IN SECTOR SOUTH OF RWY 05/23 AND RWY 12/30 BEYOND 3.5NM.

CATEGORY	A	B	C	D
CIRCLING *	1710 (986-2.4)	1810 (1086-4.0)	2010 (1286-5.0)	
ALTERNATE	(1486-4.4)	(1586-6.0)	(1786-7.0)	

Changes: AWIS NDB DELETED, Editorial.

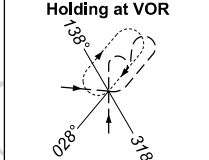
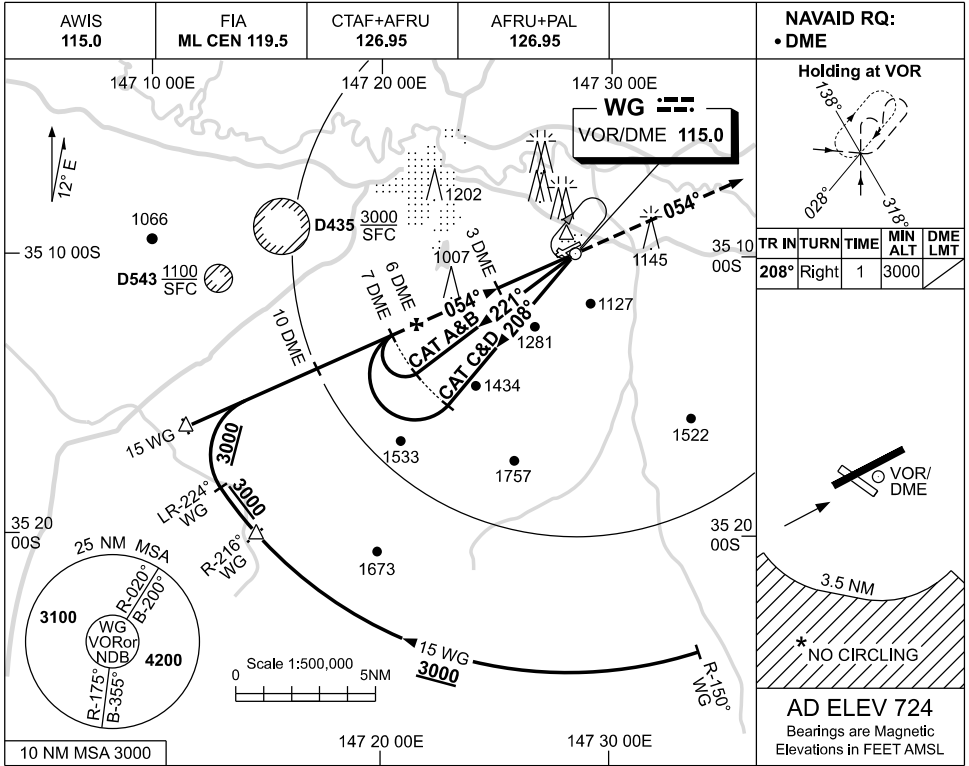
SWGNB01-186

USE QNH

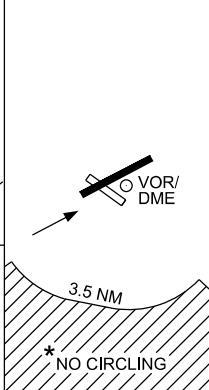
VOR RWY 05

19 MAR 2026

WAGGA WAGGA, NSW (YSWG)

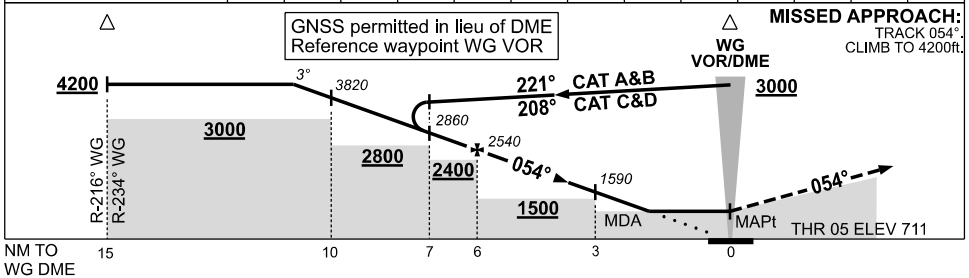


TR	IN	TURN	TIME	MIN ALT	DME LMT
208°	Right		1	3000	



AD ELEV 724
Bearings are Magnetic
Elevations in FEET AMSL

NM TO WG DME	11.2	11	10	9	8	7	6	5	4	3	2.2	
ALT (3° APCH PATH)	4200	4140	3820	3500	3180	2860	2540	2230	1910	1590	1340	



NOTES

CATEGORY	A	B	C	D
S-I VOR/DME	1340 (629-3.6)			
CIRCLING *	1710 (986-2.4)	1810 (1086-4.0)	2010 (1286-5.0)	
ALTERNATE	(1486-4.4)	(1586-6.0)	(1786-7.0)	

- 1. MAX IAS: INITIAL : 210KT.
- * 2. NO CIRCLING IN SECTOR SOUTH OF RWY 05/23 AND RWY 12/30 BEYOND 3.5NM.

Changes: AWIS NDB DELETED, Editorial.

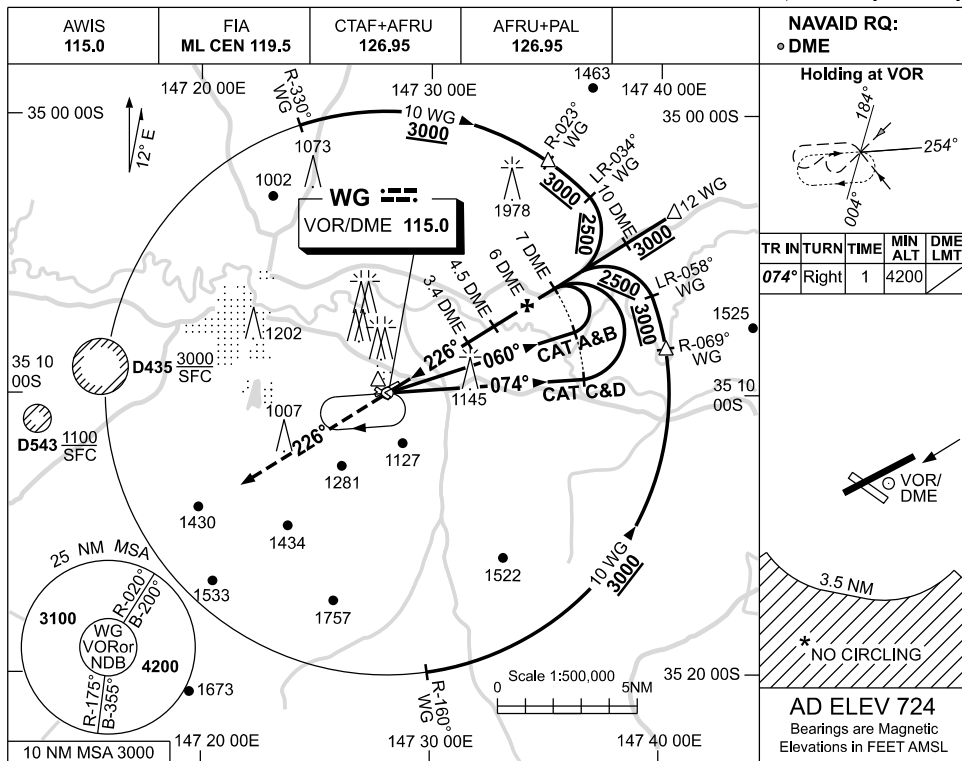
SWGVO01-186

USE QNH

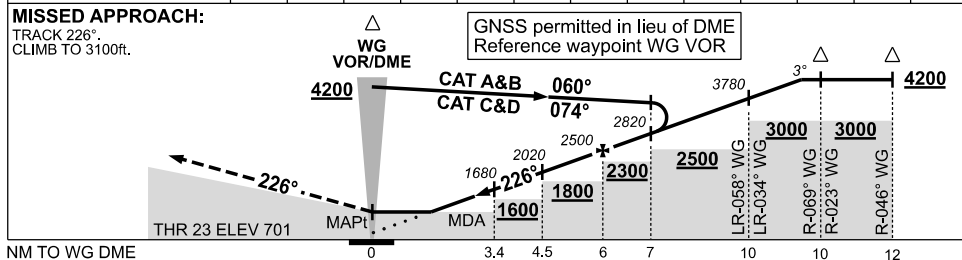
VOR RWY 23

19 MAR 2026

WAGGA WAGGA, NSW (YSWG)



NM TO WG DME	2.8	3	3.4	4	4.5	5	6	7	8	9	10	11.3
ALT (3° APCH PATH)	1500	1550	1680	1870	2020	2180	2500	2820	3140	3460	3780	4200



NOTES

CATEGORY	A	B	C	D
S-I VOR/DME	1500 (799-4.6)			
CIRCLING *	1710 (986-2.4)	1810 (1086-4.0)	2010 (1286-5.0)	
ALTERNATE	(1486-4.4)	(1586-6.0)	(1786-7.0)	

1. MAX IAS: INITIAL : 210KT.

* 2. NO CIRCLING IN SECTOR SOUTH OF RWY 05/23 AND RWY 12/30 BEYOND 3.5NM.

Changes: STEP DOWN FIX, AWIS NDB DELETED, Editorial.

SWGVO02-186