

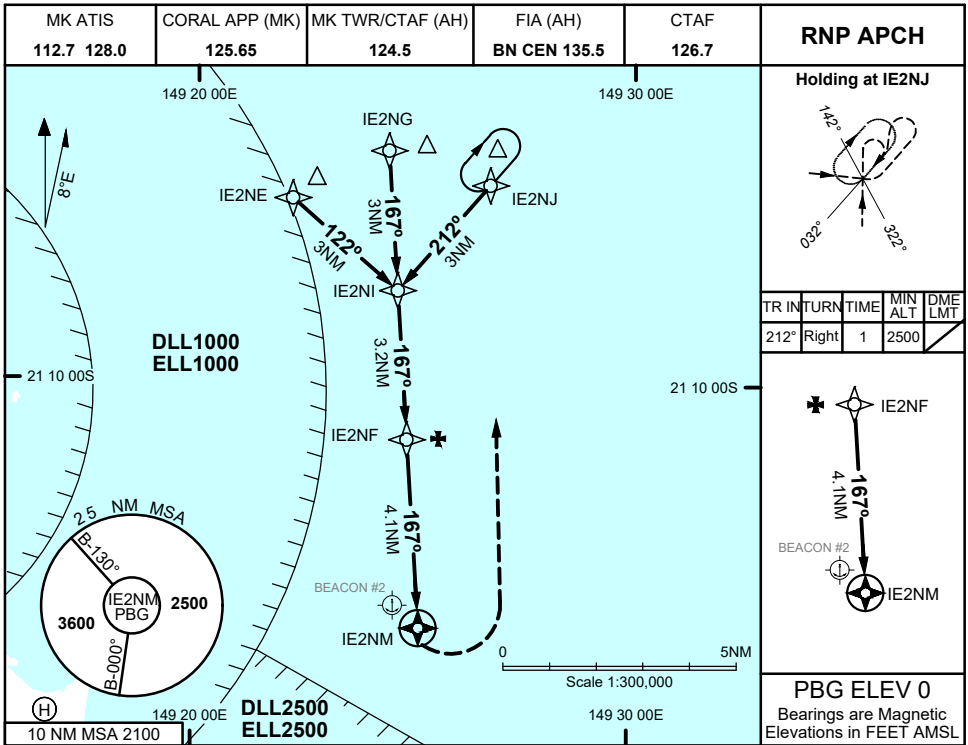
FOR CASA APPROVED OPERATORS ONLY

USE QNH

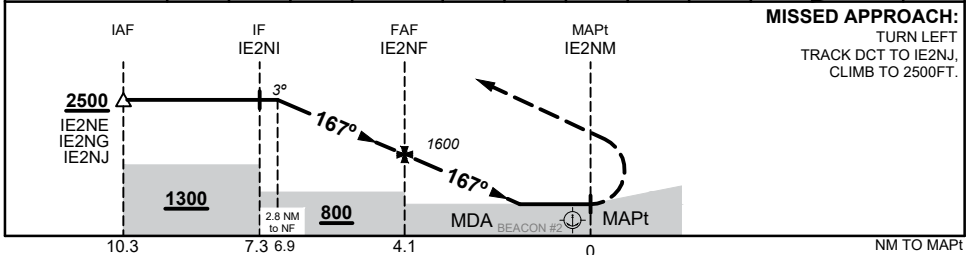
RNP 167

19 MAR 2026

VICTOR ISLAND EAST, QLD (YVIE)



NM TO NEXT WPT	2.8	2	1	IE2NF	4	3	2	1.1	1	0.9	IE2NM	
ALT (3° APCH PATH)	2500	2240	1920	1600	1570	1250	930	630	610	580		



NOTES

1. MAPt LOCATED 0.5 NM FROM BEACON #2 (S21 14 48, E149 24 36)
2. CAUTION: REMOTE ALTIMETER SETTING SOURCE YBMK.
3. CAUTION: PROCEDURE IS OVERLAID BY PROCEDURES AT YBMK. AIRCRAFT SEPARATION NOT ASSURED.
- *4. INCLUDES 50 FT FOR USE OF FORECAST AREA QNH

CATEGORY	H
LNAV (YBMK QNH)	580 (580 - 2.4)
LNAV (AREA QNH)*	680 (680 - 2.4)
ALTERNATE	(1180 - 4.4)

Changes: NEW CTAF FREQ ADDED, AREA QNH NOTE, Editorial

VIEGN01-186

FOR CASA APPROVED OPERATORS ONLY