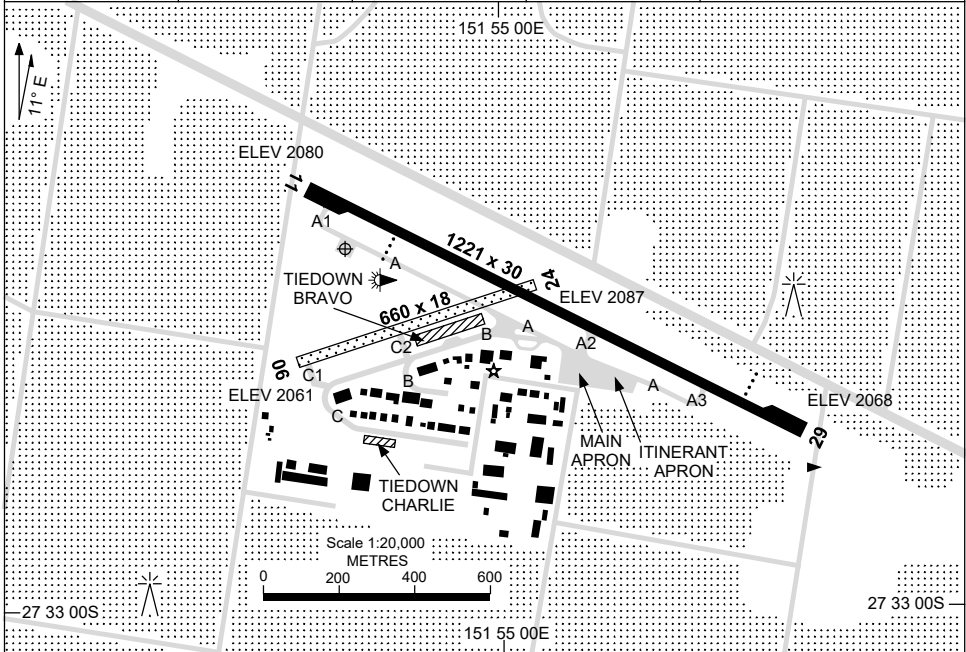


7 SEP 2023

AD ELEV 2087  
27 32 29S 151 54 45E

AERODROME CHART  
**TOOWOOMBA, QLD (YTWB)**

AWIS 127.05	FIA BN CEN 121.2	CTAF+AFRU 127.65	PAL+AA 122.4	Bearings are Magnetic Elevations in FEET AMSL
----------------	---------------------	---------------------	-----------------	--



RWY		AERODROME LIGHTING
		ABN : ALTN W/G 5 SEC TAXIWAY : GREEN CL TWY A, B (PARTIAL) BLUE EDGE TWY A1, A2, A3 RL : PAL+AA 122.4 , SDBY (15 SEC)
11	106	PAPI RIGHT SIDE 3.0° 45FT RTIL LIRL
286	29	PAPI RIGHT SIDE 3.0° 45FT RTIL LIRL
06	062	NIL
242	24	NIL

**NOTES**

1. FIA FREQ 121.2 AVBL ABV 500FT. UNREL ON GROUND ALTN FREQ 135.6
2. ABN ACT BY PAL H24.

Changes: NOTES.

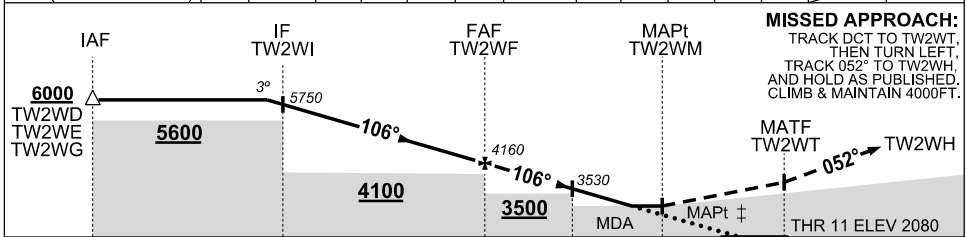
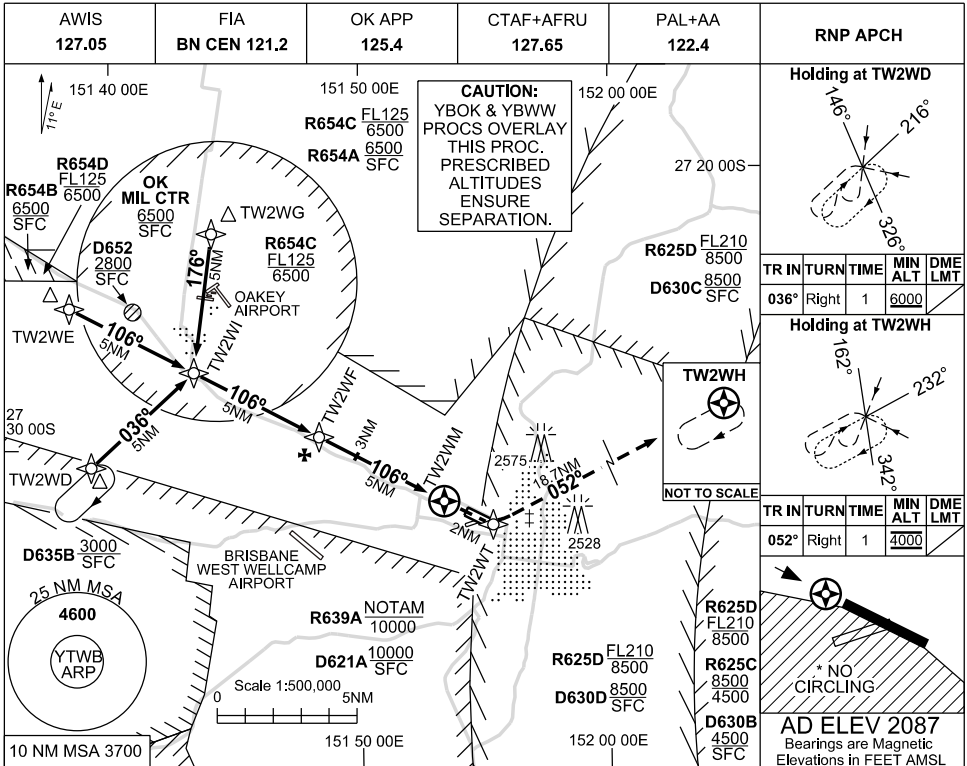
TWBAD01-176

USE QNH

RNP RWY 11

TOOWOOMBA, QLD (YTWB)

19 MAR 2026



**NOTES**

- MAX IAS :  
 TW2WD HOLDING: 210KT.  
 TW2WH HOLDING: 180KT.  
 † INITIAL : 210KT.  
 † MAP TURN : 180KT.
- NO CIRCLING  
 SOUTH OF RWY 11/29.
- PRD OPR HR VIA NOTAM  
 EXCEPT  
 D652: H24.  
 D630C: SEE ERSA.  
 D635B: HJ

CATEGORY	A	B	C	D
LNAV	2680 (593 - 3.4)			NOT APPLICABLE
CIRCLING *	2960 (873 - 2.4)		NOT AUTHORISED	
ALTERNATE	(1373 - 4.4)		(1473 - 6.0)	

Changes: UPDATED OBST, CAUTION NOTE.

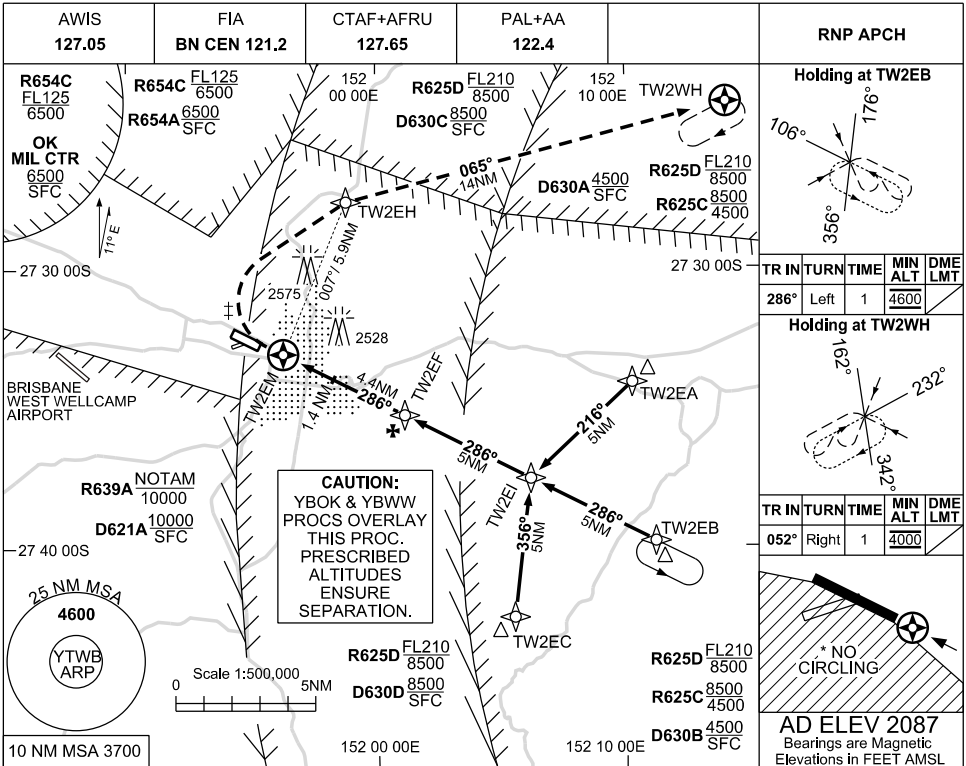
TWBG01-186

USE QNH

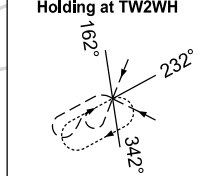
RNP RWY 29

TOOWOOMBA, QLD (YTWB)

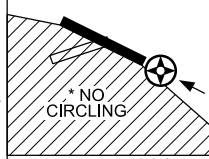
19 MAR 2026



TR	IN	TURN	TIME	MIN ALT	DME LMT
286°	Left	1		4600	

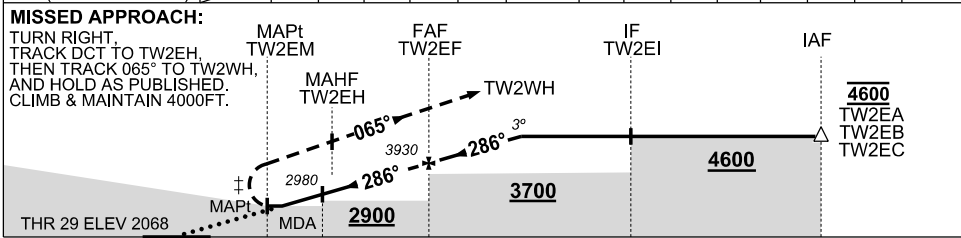


TR	IN	TURN	TIME	MIN ALT	DME LMT
052°	Right	1		4000	



AD ELEV 2087  
Bearings are Magnetic  
Elevations in FEET AMSL

NM TO NEXT WPT	TW2EM	0.4	1	2	3	4	TW2EF	1	2	2.1			
ALT (3° APCH PATH)	2660	2850	3170	3490	3810	3930	4250	4570	4600				



**NOTES**

- MAX IAS:  
TW2EB HOLDING: 210KT.  
TW2WH HOLDING: 180KT.  
INITIAL: 210KT.
- MAP TURN: 170KT.  
SOUTH OF RWY 11/29.
- INITIAL & INTERMEDIATE SEGMENTS WITHIN R625C.
- TW2EB HOLDING WITHIN R625B&C.
- PRD OPR HR VIA NOTAM EXCEPT D630A,D630C: SEE ERSA

CATEGORY	A	B	C	D
LNAV	2660 (592 - 3.4)			NOT APPLICABLE
CIRCLING *	2960 (873 - 2.4)		NOT AUTHORISED	
ALTERNATE	(1373 - 4.4)		(1473 - 6.0)	

Changes: UPDATED OBST, CAUTION NOTE.

TWBG02-186