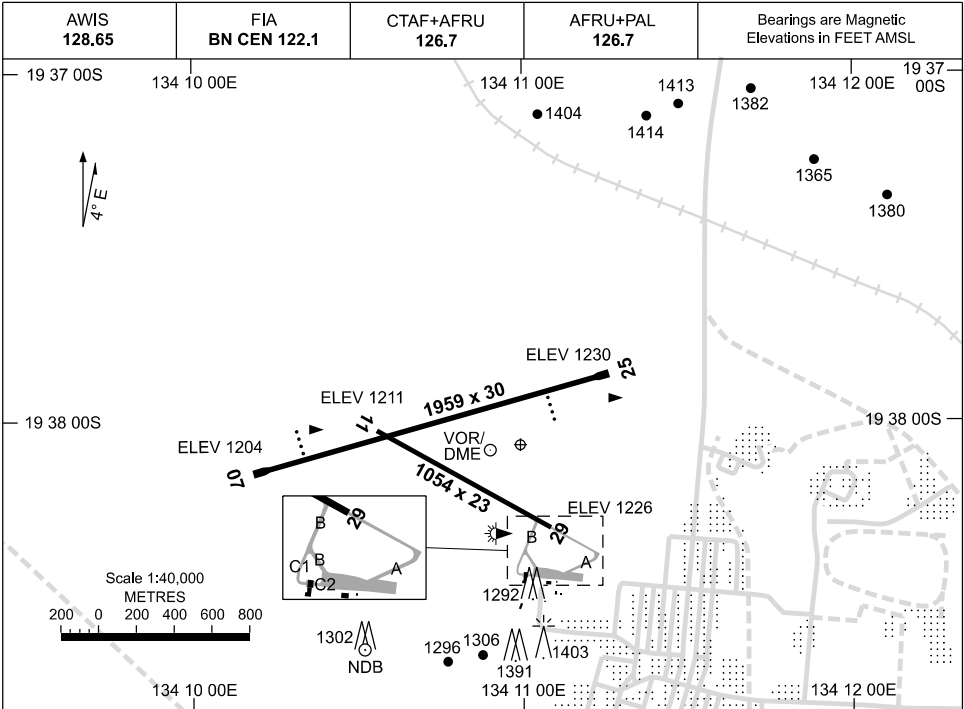


19 MAR 2026

AD ELEV 1236
19 38 04S 134 11 00E

AERODROME CHART
TENNANT CREEK, NT (YTNK)



AERODROME LIGHTING	
RWY	TAXIWAY : BLUE EDGE RL : AFRU+PAL 126.7 , SDBY (25 SEC)
07 <small>070</small>	PAPI 3.0° 49FT LIRL
<small>250</small> 25	PAPI 3.0° 49FT LIRL
11 <small>115</small>	LIRL
<small>295</small> 29	LIRL

NOTES

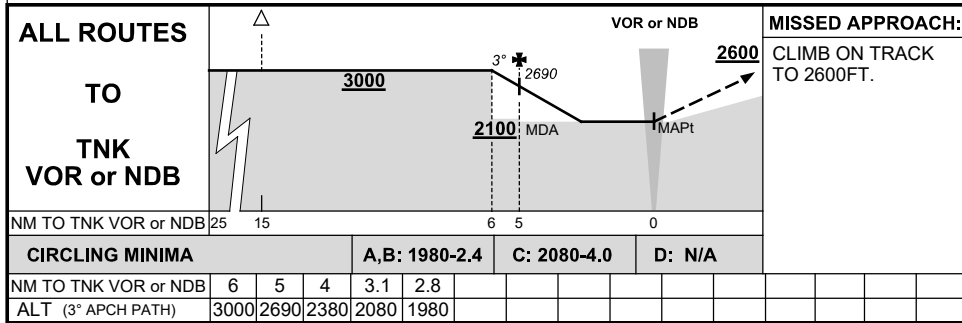
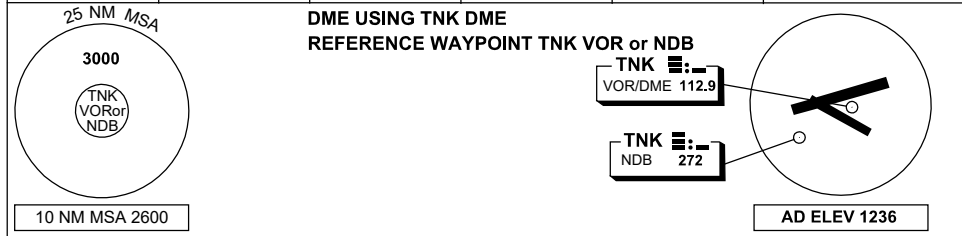
Changes: TWY C1, C2, HANGAR ADDED, Editorial.

TNKAD01-186

DME OR GNSS ARRIVAL PROCEDURES TENNANT CREEK, NT (YTNK)

16 JUN 2022

AWIS 128.65	FIA BN CEN 122.1	CTAF+AFRU 126.7	AFRU+PAL 126.7		Bearings are Magnetic Elevations in FEET AMSL
----------------	---------------------	--------------------	-------------------	--	--

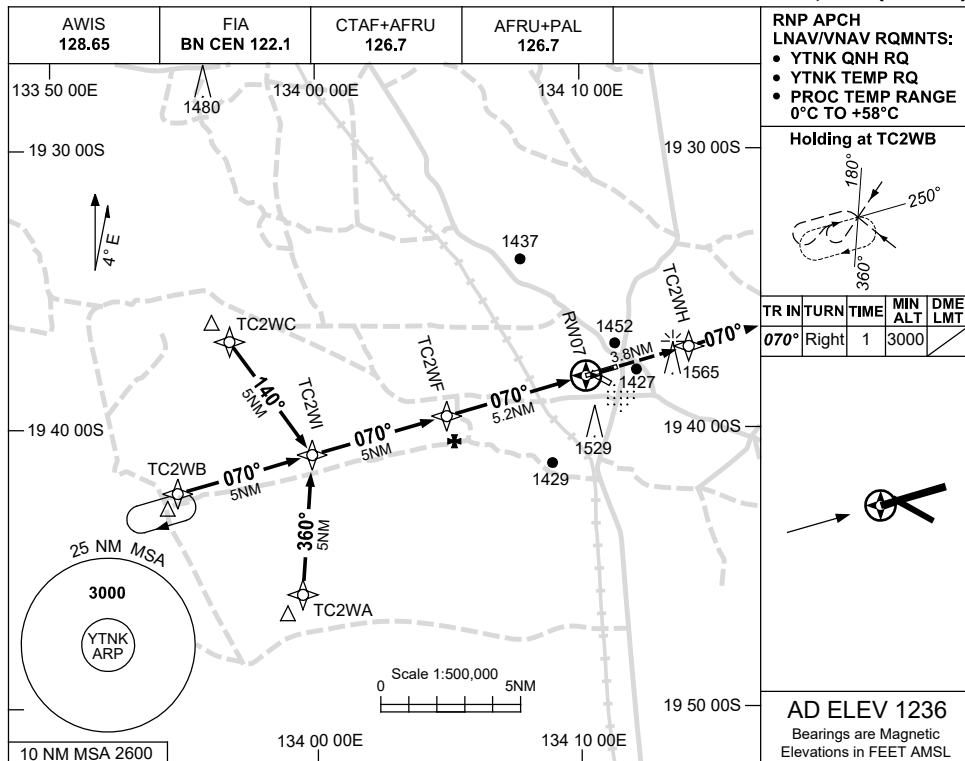


USE QNH

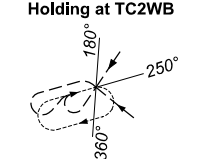
RNP RWY 07

8 SEP 2022

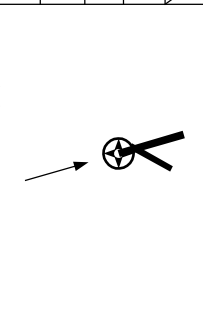
TENNANT CREEK, NT (YTNK)



RNP APCH
LNAV/VNAV RQMNTS:
• YTNK QNH RQ
• YTNK TEMP RQ
• PROC TEMP RANGE
0°C TO +58°C

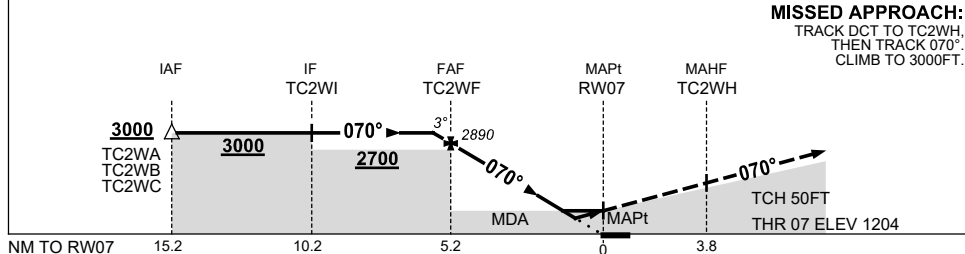


TR	IN	TURN	TIME	MIN ALT	DME LMT
070°	Right	1	3000		



AD ELEV 1236
Bearings are Magnetic
Elevations in FEET AMSL

NM TO NEXT WPT	0.3	TC2WF	4	3	2	1.6	0.9	RW07
ALT (3° APCH PATH)	3000	2890	2530	2210	1890	1750	1530	



MISSED APPROACH:
TRACK DCT TO TC2WH,
THEN TRACK 070°.
CLIMB TO 3000FT.

NOTES

CATEGORY	A	B	C	D
LNAV/VNAV		1530 (326-1.8)		NOT APPLICABLE
LNAV		1750 (546-3.1)		
CIRCLING	1980 (744-2.4)		2080 (844-4.0)	
ALTERNATE	(1244-4.4)		(1344-6.0)	

1. MAX IAS:
INITIAL : 230KT.

Changes: CHART TITLE, PBN SPECIFICATION BOX.

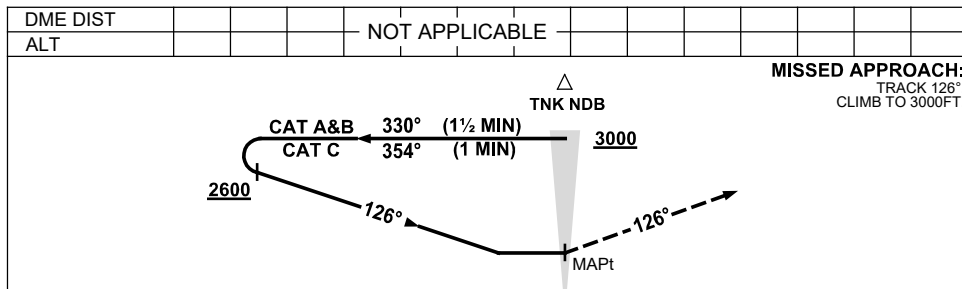
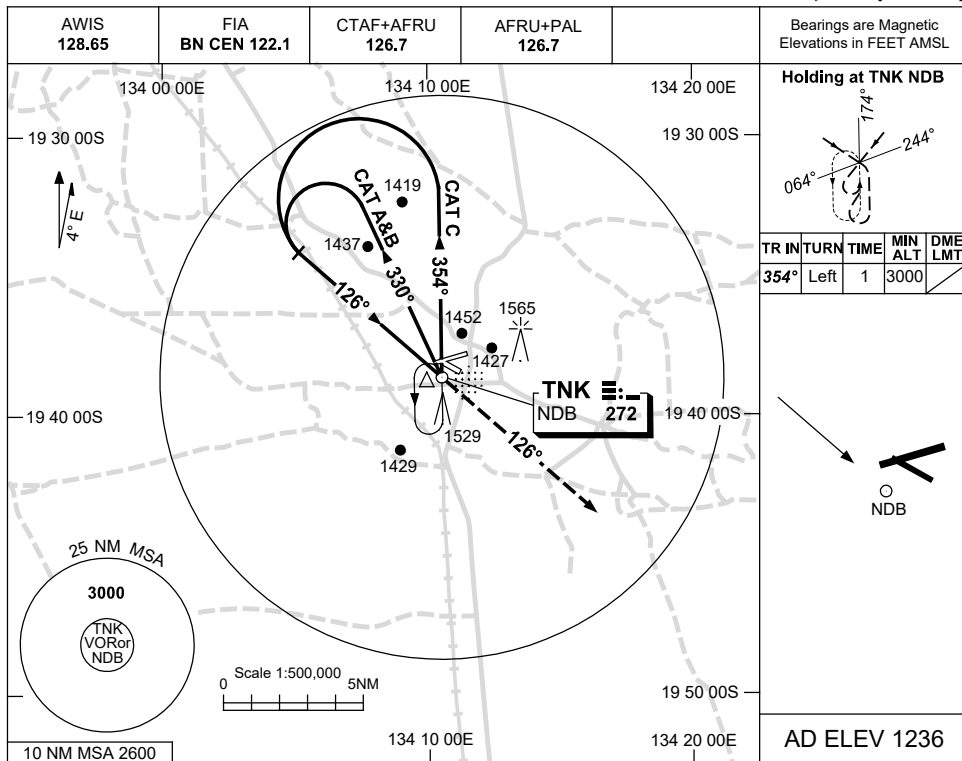
TNKG01-172

USE QNH

NDB-A

16 JUN 2022

TENNANT CREEK, NT (YTNK)



NOTES

- MAX IAS: INITIAL : 210KT.

CATEGORY	A	B	C	D
CIRCLING	1980 (744-2.4)		2080 (844-4.0)	NOT APPLICABLE
ALTERNATE	(1244-4.4)		(1344-6.0)	

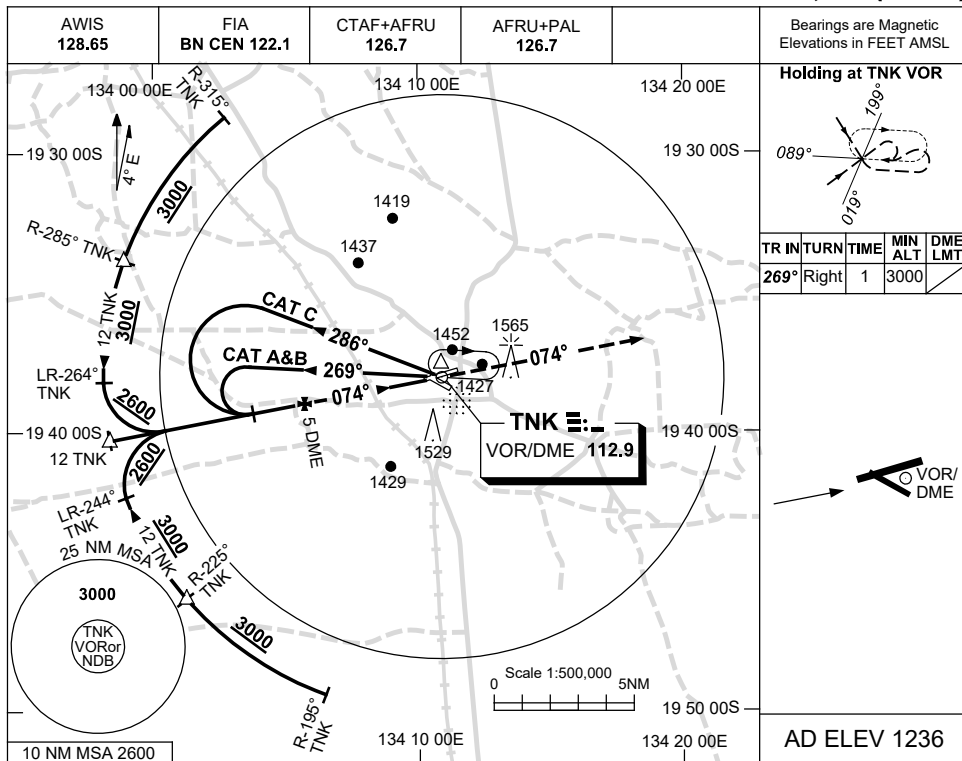
Changes: MINIMAS, NOTES.

TNKNB01-171

USE QNH

VOR RWY 07
TENNANT CREEK, NT (YTNK)

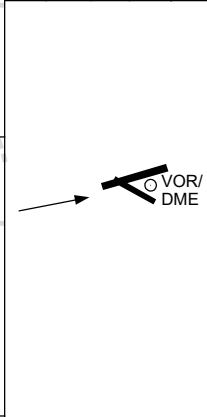
16 JUN 2022



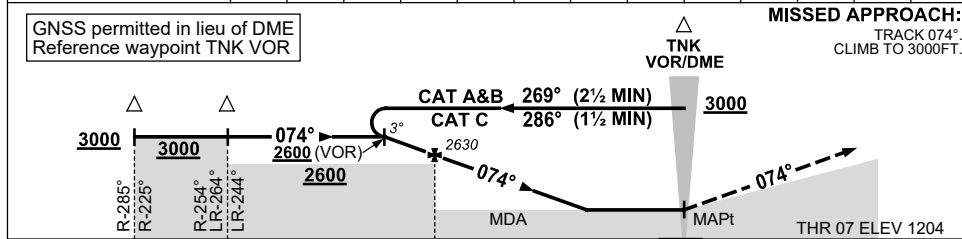
Bearings are Magnetic
 Elevations in FEET AMSL

Holding at TNNK VOR

TR	IN	TURN	TIME	MIN	DME
				ALT	LMT
269°	Right		1	3000	



DIST TO TNNK DME	6.2	6	5	4	3	2.4	2.3				
ALT (3° APCH PATH)	3000	2950	2630	2310	1990	1820	1780				



NOTES

- MAX IAS:
INITIAL : 210KT.

CATEGORY	A	B	C	D
S-I VOR/DME		1780 (576-3.3)		NOT APPLICABLE
S-I VOR		1820 (616-3.5)		
CIRCLING	1980 (744-2.4)		2080 (844-4.0)	
ALTERNATE	(1244-4.4)		(1344-6.0)	

Changes: MINIMAS, NOTES.

TNNKVO01-171