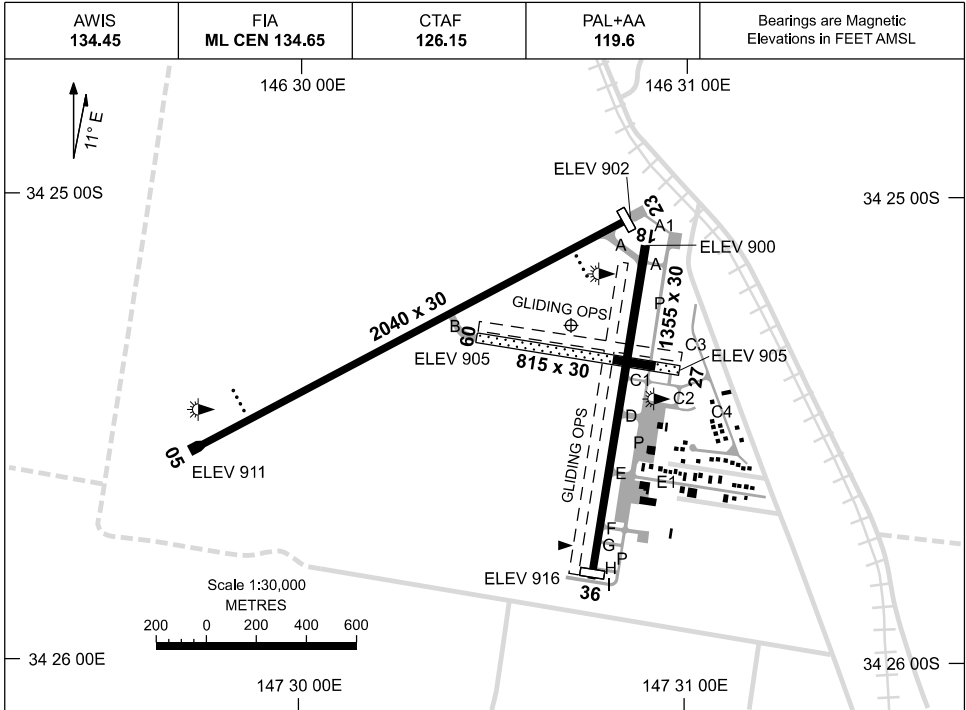


19 MAR 2026

AD ELEV 921
34 25 17S 147 30 42E

AERODROME CHART
TEMORA, NSW (YTEM)



	AERODROME LIGHTING	
RWY	TAXIWAY : BLUE EDGE TWY A, D AND RWY 18/36 BTN TWY A AND D RL : PAL+AA 119.6, SDBY (60 SEC)	
05 <small>050</small>	PAPI 3.0° 41.3FT LIRL	
<small>230</small> 23	PAPI 3.0° 41.3FT LIRL	
18 <small>177</small>	NIL	
<small>357</small> 36	NIL	
09 <small>087</small>	NIL	
<small>267</small> 27	NIL	
NOTES		
1. ML CEN FIA 134.65 AVBL IN CIRCUIT AREA. 2. AWIS RQ ONE ONE-SEC PULSE TO ACT.		

Changes: TWY LGT AND SDBY ADDED, Editorial.

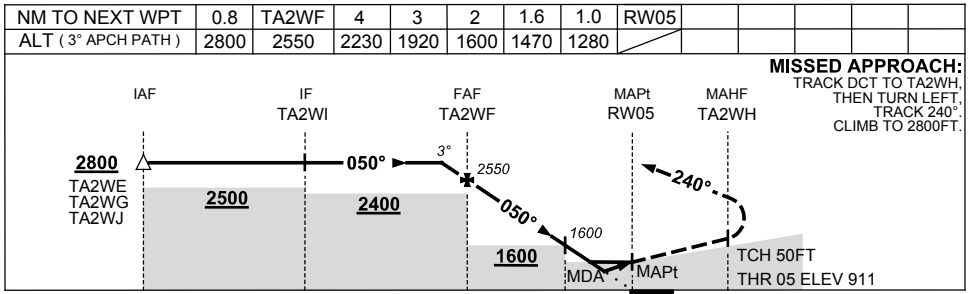
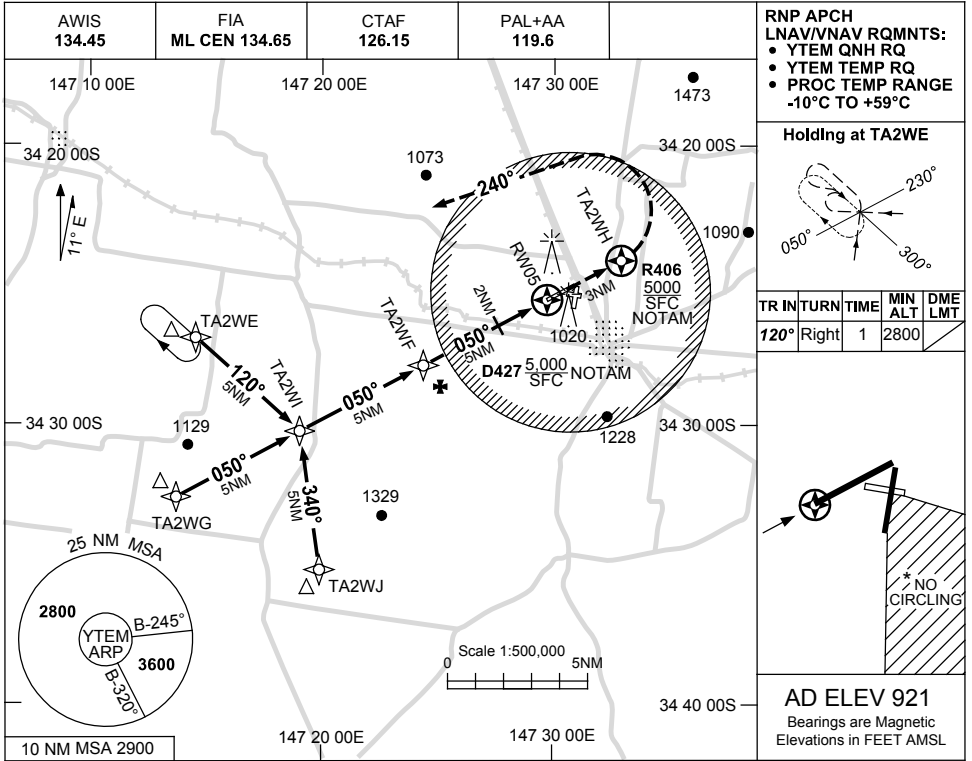
TEMAD01-186

USE QNH

RNP RWY 05

15 JUN 2023

TEMORA, NSW (YTEM)



NOTES

CATEGORY	A	B	C	D
LNAV/VNAV	1280 (369-2.1)			
LNAV	1470 (559-3.2)			
CIRCLING *	1710 (789-2.4)	1810 (889-4.0)	1810 (889-5.0)	
ALTERNATE	(1289-4.4)		(1389-6.0) (1389-7.0)	

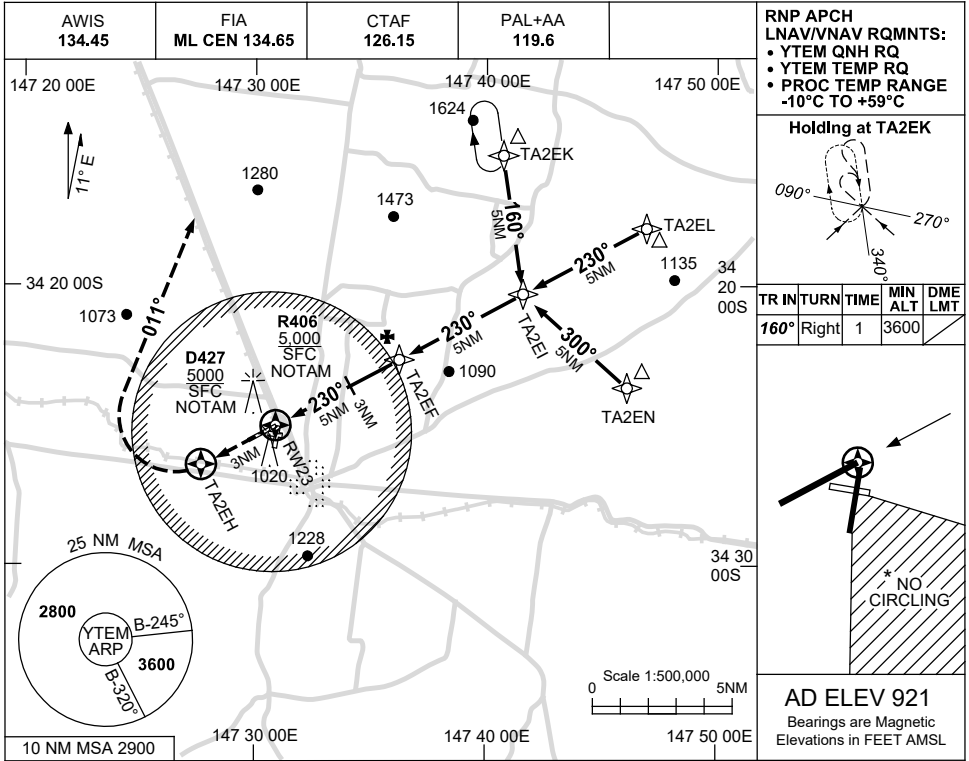
1. MAX IAS: INITIAL : 210KT.
- * 2. NO CIRCLING IN SECTOR SOUTH EAST OF RWYS 27 & 36.

Changes: SEGMENT MINIMA, CHART TITLE & WPT NAMING CONVENTION, MISSED APCH TRACK. TEMGN02-175

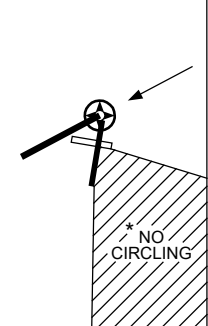
USE QNH

RNP RWY 23
TEMORA, NSW (YTEM)

13 JUN 2024

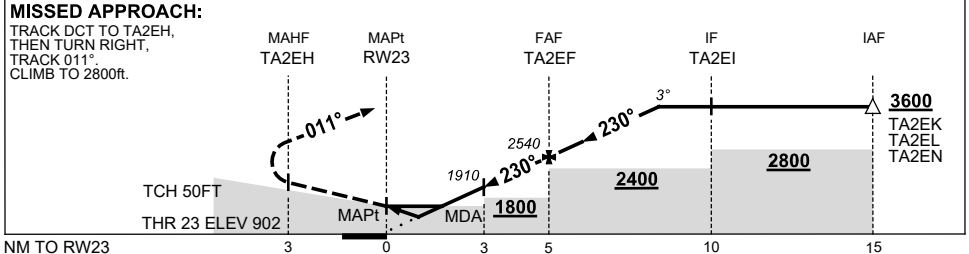


TR IN	TURN	TIME	MIN ALT	DME LMT
160°	Right	1	3600	



AD ELEV 921
 Bearings are Magnetic
 Elevations in FEET AMSL

NM TO NEXT WPT	RW23	1	1.6	2	3	4	TA2EF	1	2	3	3.3		
ALT (3° APCH PATH)		1280	1470	1590	1910	2230	2540	2860	3180	3500	3600		



NOTES

CATEGORY	A	B	C	D
LNAV/VNAV		1280 (378-2.1)		
LNAV		1470 (568-3.2)		
CIRCLING *	1710 (789-2.4)	1810 (889-4.0)	1810 (889-5.0)	
ALTERNATE	(1289-4.4)	(1389-6.0)	(1389-7.0)	

- MAX IAS: INITIAL : 210KT.
- NO CIRCLING IN SECTOR SOUTH EAST OF RWYS 27 & 36.

Changes: HOLDING, Editorial.

TEMGN03-179