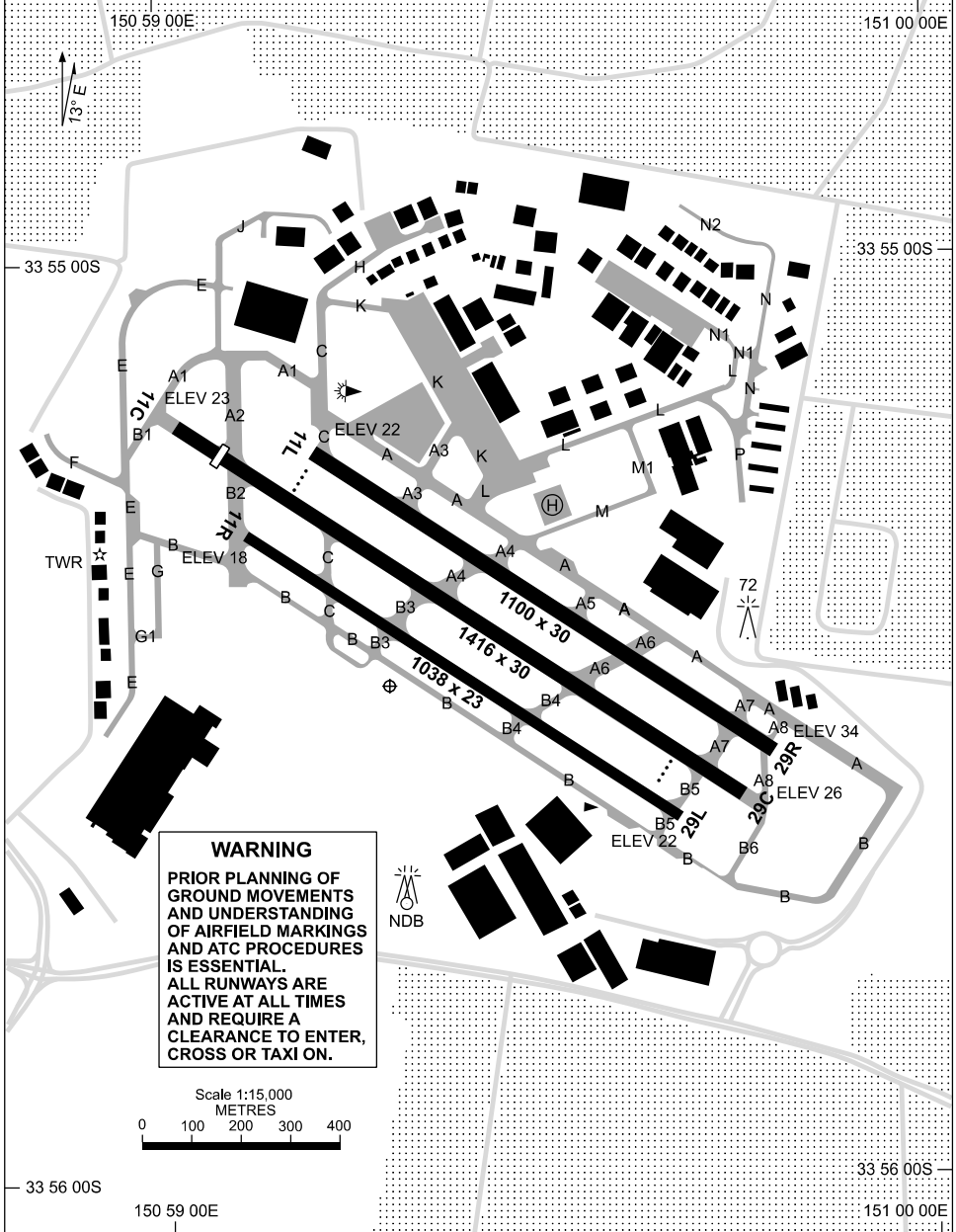


19 MAR 2026

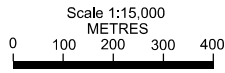
33 55 28S 150 59 18E

**SYDNEY/BANKSTOWN, NSW (YSBK)**

ATIS 120.9	APP/DEP (SY) 128.3/118.4, 129.7	TWR 123.6 132.8	SMC 119.9	FIA (AH) SY CEN 125.8	CTAF+AFRU (AH) 132.8	PAL+AA 125.95	Bearings are MAG ELEV in FT AMSL
---------------	------------------------------------	--------------------	--------------	--------------------------	-------------------------	------------------	-------------------------------------



**WARNING**  
 PRIOR PLANNING OF GROUND MOVEMENTS AND UNDERSTANDING OF AIRFIELD MARKINGS AND ATC PROCEDURES IS ESSENTIAL.  
 ALL RUNWAYS ARE ACTIVE AT ALL TIMES AND REQUIRE A CLEARANCE TO ENTER, CROSS OR TAXI ON.



Changes: TWY C REMOVED BTN RWY 11L/29R & 11C/29C, Editorial.

SBKAD01-186

19 MAR 2026

ATIS 120.9	APP/DEP (SY) 128.3/118.4, 129.7	TWR 123.6 132.8	SMC 119.9	FIA (AH) SY CEN 125.8	CTAF+AFRU (AH) 132.8	PAL+AA 125.95	Bearings are MAG ELEV in FT AMSL
<b>RWY</b>	<b>AERODROME LIGHTING</b>						
	ABN : FLG W 4 SEC TAXIWAY : GREEN CENTRELINE RL : PAL+AA, SDBY (3 SEC)						
<b>11C</b> <sup>111</sup> 291 <b>29C</b>	PAPI 3.0° 25FT MIRL RTIL PAPI 3.0° 25FT MIRL RTIL						
<b>11L</b> <sup>111</sup> 291 <b>29R</b>	NIL NIL						
<b>11R</b> <sup>111</sup> 291 <b>29L</b>	NIL NIL						
<p><b>NOTES</b></p> <p>1. FIA FREQ SUBJECT TO SHIELDING. USE IN OPEN AREAS WITH LINE OF SIGHT TO CONTROL TWR.</p>							

**STANDARD INSTRUMENT DEPARTURES (SID)  
BANKSTOWN ONE DEPARTURE RWY 11C/29C  
SYDNEY/BANKSTOWN, NSW (YSBK)**

12 JUN 2025

ATIS 120.9	SMC 119.9	TWR 123.6 132.8	DEP AS ADVISED	FIA (AH) SY CEN 125.8	CTAF+AFRU (AH) 132.8	PAL+AA 125.95	Bearings are MAG ELEV in FT AMSL
---------------	--------------	--------------------	-------------------	--------------------------	-------------------------	------------------	-------------------------------------

NOT TO SCALE

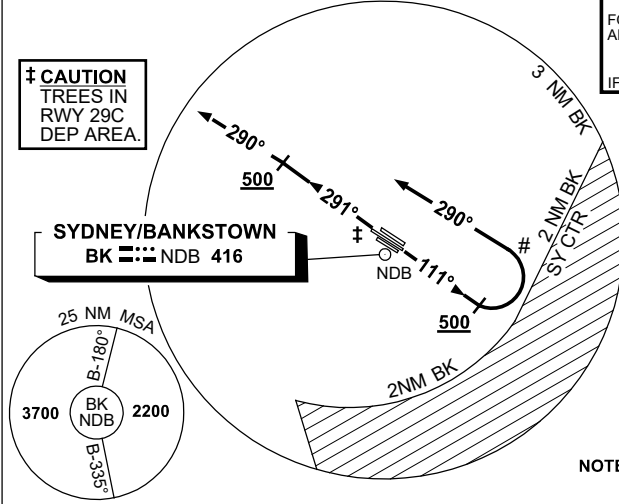


**WARNING:** Unless specifically in receipt of a clearance to enter SY CTR, it is the responsibility of the PIC to remain clear of SY CTR.

# **CAUTION:** DO NOT pass thru 1500ft until established on 290°

**SPECIAL REQUIREMENT**  
FOR ACFT CLEARED VIA OLSEM-Y193-BANDA  
- REACH FL180 by 156NM BANDA  
- REACH FL220 by 144NM BANDA  
- REACH FL250 by 110NM BANDA  
FOR ACFT CLEARED VIA WLM AT or ABV FL130  
- REACH FL130 by 31NM WLM NDB  
FOR ACFT CLEARED VIA PUDUT-MATLA AT or ABV FL130  
- REACH FL130 by 15NM PUDUT  
- REACH FL160 by PUDUT  
IF UNABLE TO COMPLY ADVISE ATC.

‡ **CAUTION**  
TREES IN  
RWY 29C  
DEP AREA.



**CLASS D SPEED  
LIMITS APPLY**

**SPEED  
MAX IAS 250KT  
BELOW 10,000ft**

**SYDNEY/KINGSFORD SMITH  
SY DME 112.1**

**NOTE:** EXPECT TO MAINTAIN  
3000ft UNTIL 15 DME SY

15 NM MSA 2600

**BANKSTOWN ONE DEPARTURE**

PROC NOT AVBL FROM RWYS 11L/29R AND 11R/29L

**WARNING:** Unless specifically in receipt of a clearance to enter SY CTR, it is the responsibility of the PIC to remain clear of SY CTR.

**RWY 11C**

- GRAD 3.6% to 300ft, then 3.3%
- Track 111°
- AT or ABV 500ft, turn LEFT track 290°
- Contact Departures when advised by Tower, or approaching controlled airspace

**RWY 29C**

- GRAD 3.3%
- Track 291°
- AT or ABV 500ft, turn LEFT track 290°
- Contact Departures when advised by Tower, or approaching controlled airspace

# **CAUTION:** DO NOT pass thru 1500ft until established on 290°

**COMMUNICATIONS FAILURE PROCEDURE**

On recognition of communications failure

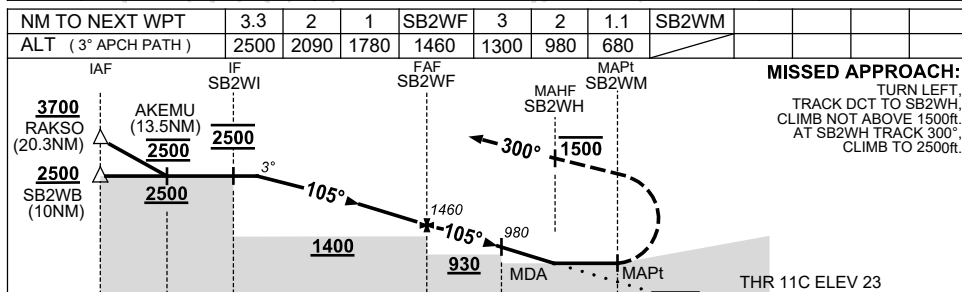
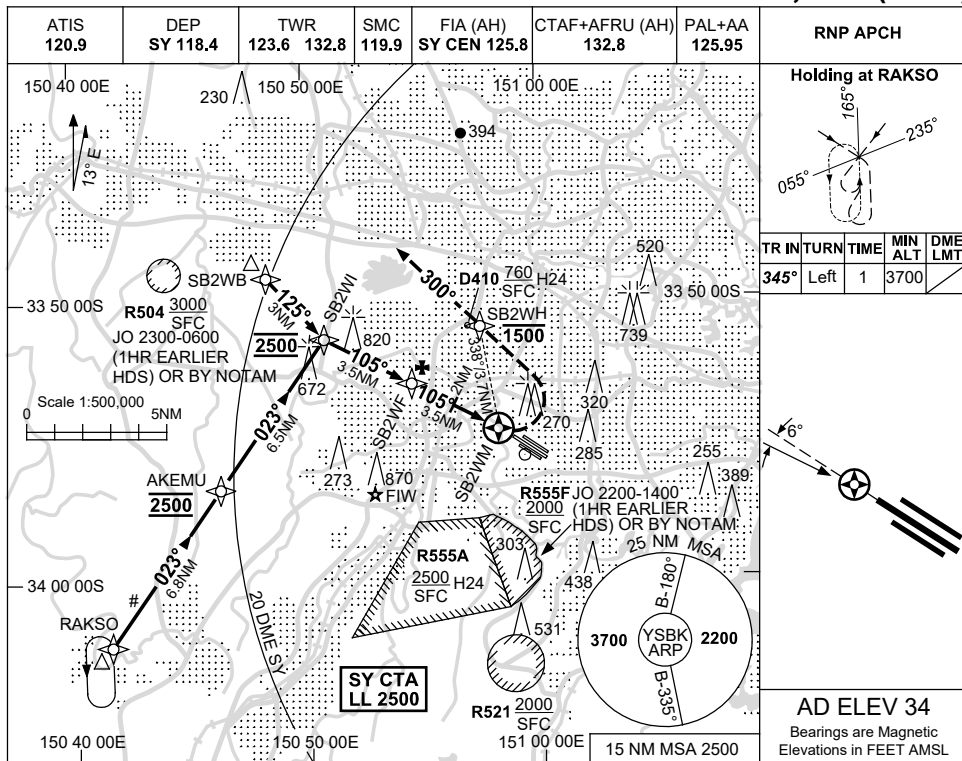
- Squawk 7600
- Maintain last procedure track for two minutes, and
- CLIMB IF NECESSARY TO MINIMUM SAFE ALTITUDE, to maintain terrain clearance, then
- proceed in accordance with the latest ATC route clearance acknowledged.

USE QNH

RNP RWY 11C

13 JUN 2024

SYDNEY/BANKSTOWN, NSW (YSBK)



CATEGORY	A	B	C	D
LNAV	<b>680 (657-3.7)</b>			<b>NOT APPLICABLE</b>
CIRCLING	<b>800 (766-2.4)</b>		<b>960 (926-4.0)</b>	
ALTERNATE	<b>(1266-4.4)</b>		<b>(1426-6.0)</b>	

**NOTES**

1. MAX IAS:  
HOLDING : 150KT.  
INITIAL : 180KT.  
MISSED APCH TURN : 160KT.
2. CIRCLING BEYOND 2.5NM SW OF YSBK WILL REQUIRE A CLEARANCE INTO R555A.
3. INITIAL SEGMENT COINCIDENT WITH WESTMEAD HOSP RNP 052 APPROACH.
4. APCH APPROVAL RQ FM SY ATIS. ALL ACFT TO TRACK VIA RAKSO UNLESS ADVISED BY ATC.

Changes: AKEMU, MINIMA, MAG VAR, ATIS, WPT NAMING CONVENTION, Editorial.

SBKGN01-179



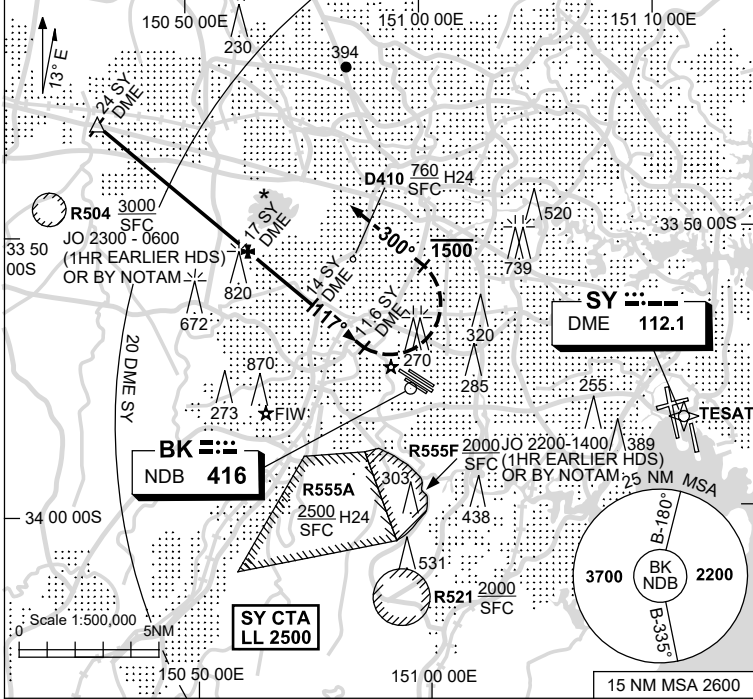
USE QNH

NDB RWY 11C

13 JUN 2024

SYDNEY/BANKSTOWN, NSW (YSBK)

ATIS 120.9	DEP SY 118.4	TWR 123.6 132.8	SMC 119.9	FIA (AH) SY CEN 125.8	CTAF+AFRU (AH) 132.8	PAL+AA 125.95	NAVAID RQ: • SY DME
---------------	-----------------	--------------------	--------------	--------------------------	-------------------------	------------------	------------------------

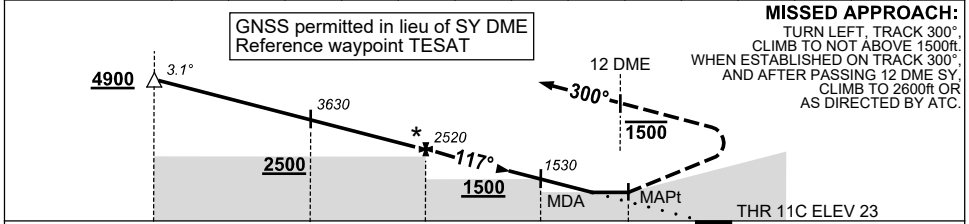


**Holding as Advised by ATC**

TR	IN	TURN	TIME	MIN ALT	DME LMT
/	/	/	/	/	/

**AD ELEV 34**  
Bearings are Magnetic  
Elevations in FEET AMSL

DIST TO SY DME	23.8	23	22	21	20	19	18	17	16	15	14	13	12	11.7
ALT(3.1° APCH PATH)	4900	4650	4310	3970	3630	3280	2930	2520	2240	1880	1530	1170	800	700



**MISSED APPROACH:**  
TURN LEFT, TRACK 300°. CLIMB TO NOT ABOVE 1500ft. WHEN ESTABLISHED ON TRACK 300°, AND AFTER PASSING 12 DME SY, CLIMB TO 2600ft OR AS DIRECTED BY ATC.

NM TO SY DME	24	20	17	14	11.6	10
NM TO THR 11C	14.9	10.8	7.6	4.4	1.8	0

**NOTES**

- MAX IAS:  
INITIAL : 180KT.  
MISSED APCH : 160KT.
- CIRCLING BEYOND 2.5NM SW OF YSBK WILL REQUIRE A CLEARANCE INTO R555A.
- ACFT WILL BE RADAR VECTORED TO IAF.
- \*4. ACFT ARE TO BE AT 2500FT BY 17 SY.

CATEGORY	A	B	C	D
S-I NDB	700 (677-3.7)			NOT APPLICABLE
CIRCLING	800 (766-2.4)		960 (926-4.0)	
ALTERNATE	(1266-4.4)		(1426-6.0)	

Changes: 15NM MSA, MAG VAR, MINIMA, ATIS, Editorial.

SBKNB03-179