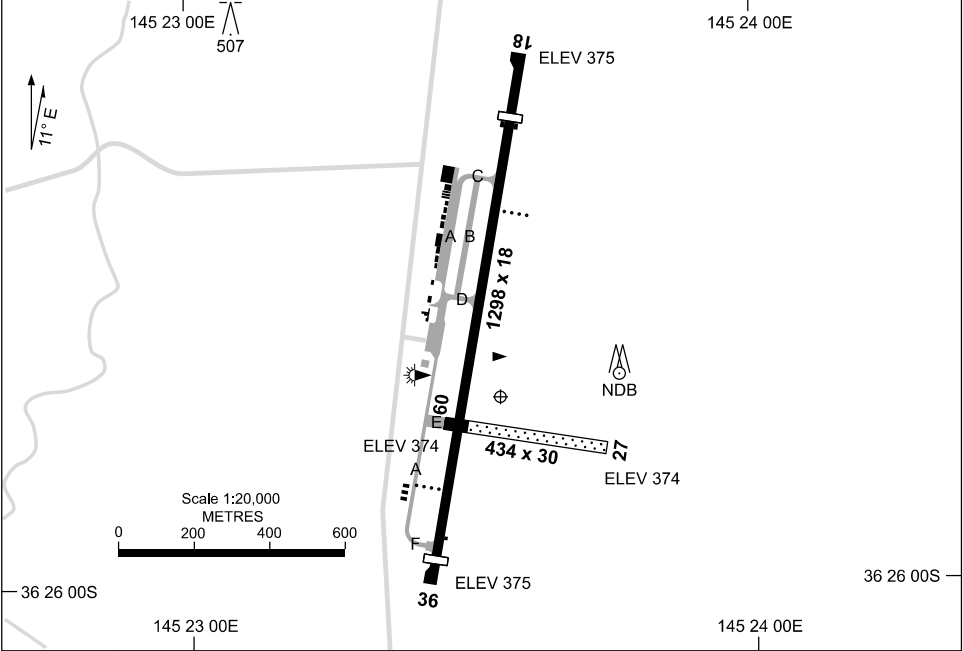


19 MAR 2026

AD ELEV 375  
36 25 44S 145 23 33E

**AERODROME CHART**  
**SHEPPARTON, VIC (YSHT)**

AVIS 212	FIA ML CEN 122.4	CTAF+AFRU/UNICOM 118.8	AFRU+PAL 123.9	Bearings are Magnetic Elevations in FEET AMSL
-------------	---------------------	---------------------------	-------------------	--



AERODROME LIGHTING	
<b>RWY</b>	TAXIWAY : BLUE EDGE RL : AFRU+PAL 123.9, PTBL (FOR EMERG USE ONLY 45MIN PN)
<b>18</b> <sup>179</sup> <b>359</b> <b>36</b>	PAPI 3.0° 38FT LIRL PAPI 3.3° 44FT LIRL
<b>09</b> <sup>088</sup> <b>268</b> <b>27</b>	NIL NIL

**NOTES**

1. FIA FREQ 122.4 AVBL CIRCUIT AREA.

Changes: PAL DELETED, AFRU+PAL.

SHTAD01-186

# GNSS ARRIVAL PROCEDURES SHEPPARTON, VIC (YSHT)

19 MAR 2026

AWIS <b>212</b>	FIA <b>ML CEN 122.4</b>	CTAF+AFRU/UNICOM <b>118.8</b>	AFRU+PAL <b>123.9</b>		Bearings are Magnetic Elevations in FEET AMSL
--------------------	----------------------------	----------------------------------	--------------------------	--	--

25 NM MSA

1900

SHT NDB

3800

B-062°

B-208°

**REFERENCE WAYPOINT SHT NDB**

SHT NDB 212

10 NM MSA 2800

AD ELEV 375

**MNG TO SHT**

SHT NDB

3000

008°

NDB

1900

008°

MDA

MAPt

**MISSED APPROACH:**

TRACK 008°.  
CLIMB TO 1900ft.

NM TO SHT NDB	25	15	9	5	4	0								
<b>CIRCLING MINIMA</b>	A,B: 1060-2.4		C: N/A		D: N/A									
NM TO SHT NDB	8.4	8	7	6	5	4	3	2.3						
ALT (3° APCH PATH)	3000	2870	2560	2240	1920	1600	1280	1060						

**SECTOR A**

SHT NDB

3800

258°

NDB

3800

MDA

MAPt

**MISSED APPROACH:**

CLIMB ON TRACK  
TO 3800ft.

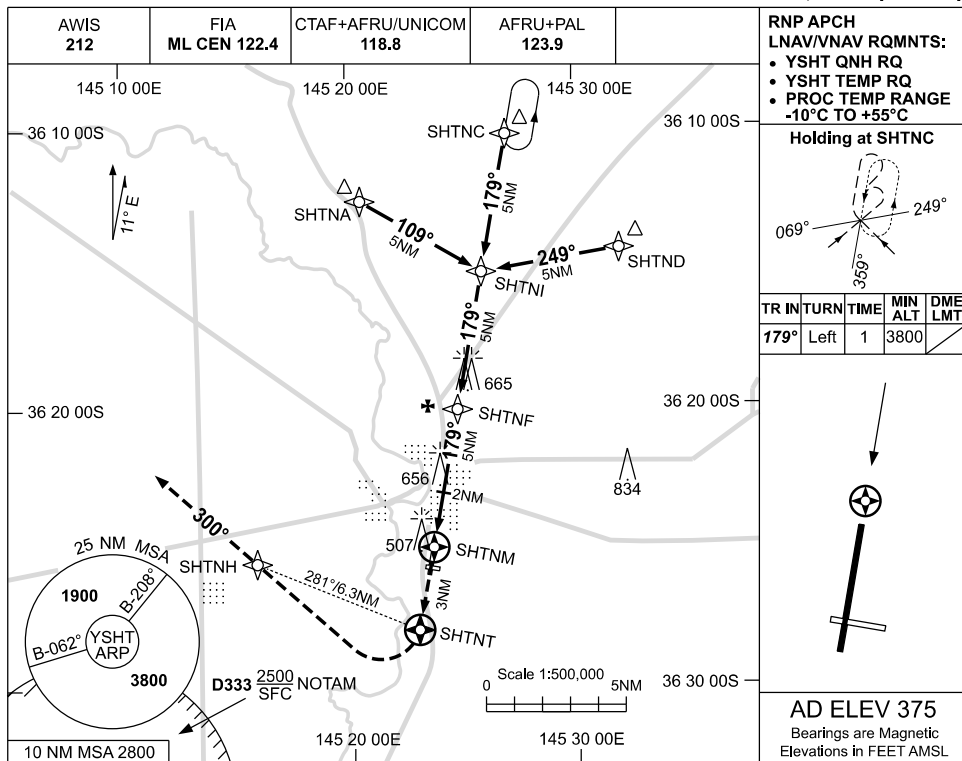
NM TO SHT NDB	25	15	10	5	0									
<b>CIRCLING MINIMA</b>	A,B: 1060-2.4		C: N/A		D: N/A									
NM TO SHT NDB	10	9	8	7	6	5	4	3	2	1.4				
ALT (3° APCH PATH)	3800	3480	3160	2840	2530	2210	1890	1570	1250	1060				

USE QNH

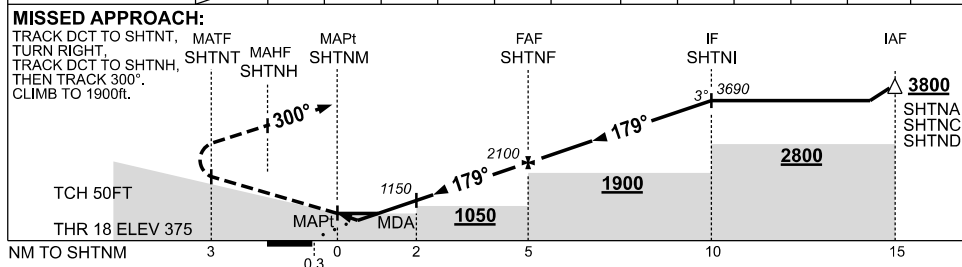
RNP RWY 18

**SHEPPARTON, VIC (YSHT)**

19 MAR 2026



NM TO NEXT WPT	SHTNM	0.7	1.2	2	3	4	SHTNF	1	2	3	4	SHTNI	
ALT (3° APCH PATH)		670	880	1150	1470	1780	2100	2420	2740	3060	3380	3690	



**NOTES**

CATEGORY	A	B	C	D
LNAV/VNAV	<b>670</b> (295-1.6)		NOT APPLICABLE	
LNAV	<b>880</b> (505-2.8)			
CIRCLING	<b>1060</b> (685-2.4)			
ALTERNATE	(1185-4.4)			

Changes: PAL DELETED, AFRU+PAL.

SHTGN01-186

