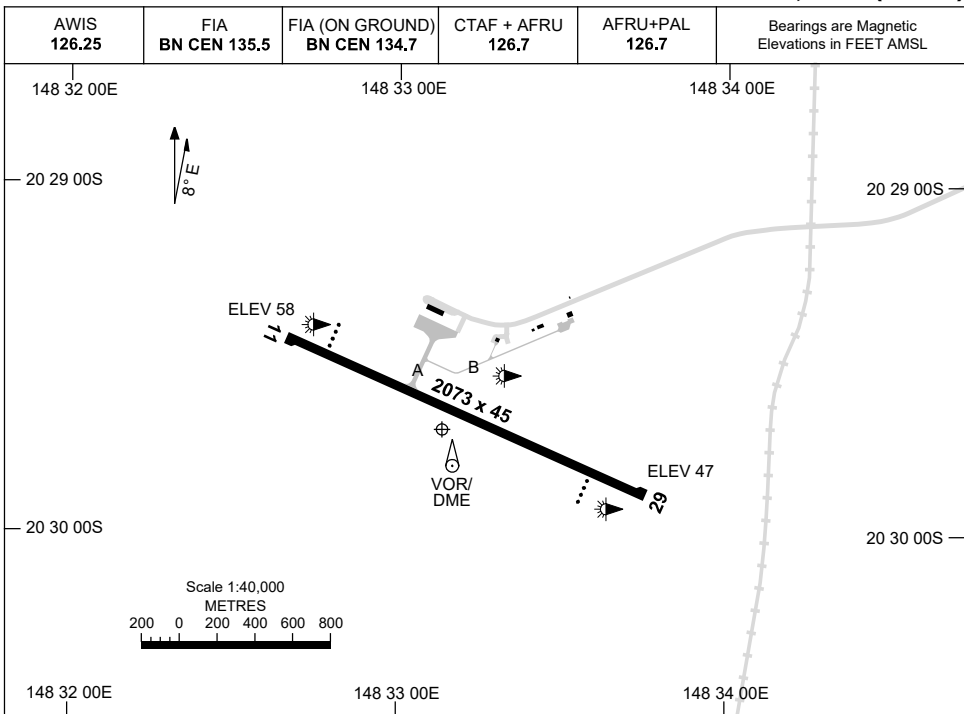


AD ELEV 82 AERODROME CHART  
**21 MAY 2020** 20 29 42S 148 33 08E **PROSERPINE/WHITSUNDAY COAST, QLD (YBPN)**



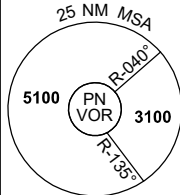
	<b>AERODROME LIGHTING</b>
<b>RWY</b>	TAXIWAY : GREEN CENTRELINE RL : AFRU+PAL 126.7 , SDBY (15 SEC)
<b>11</b> <small>106</small>	PAPI 3.0° 50FT LIRL RTIL
<small>286</small> <b>29</b>	PAPI 3.0° 50FT LIRL

**NOTES**

Changes: 142FT OBST REMOVED, COORD FMT. BPNAD01-163

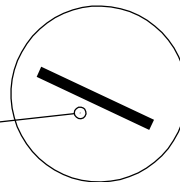
8 SEP 2022

AWIS 126.25	FIA BN CEN 135.5	FIA (ON GROUND) BN CEN 134.7	CTAF + AFRU 126.7	AFRU+PAL 126.7	Bearings are Magnetic Elevations in FEET AMSL
----------------	---------------------	---------------------------------	----------------------	-------------------	--



**DME USING PN DME  
REFERENCE WAYPOINT PN VOR**

PN VOR/DME 113.7



10 NM MSA 4500

AD ELEV 82

**SECTOR A**

**MISSED APPROACH:**  
TURN RIGHT, TRACK 330°. CLIMB TO 5100FT. PASSING 2800FT TURN LEFT, TRACK DCT TO PN VOR.  
**MAX IAS IN MISSED APPROACH TURN:** 180KT.

NM TO PN VOR	25	15	11	8	6	0								
<b>CIRCLING MINIMA</b>	A,B: 800-2.4		C: 1030-4.0		D: 1420-5.0									
NM TO PN VOR	9.6	9	8	7	6	5	4.3	4	3.1	2.4				
ALT (3° APCH PATH)	3100	2920	2600	2280	1960	1660	1420	1330	1030	800				

**SECTOR B**

**MISSED APPROACH:**  
TURN RIGHT, TRACK 113°. CLIMB TO 3100FT.

NM TO PN VOR	25	15	12	10	9	5	4	0							
<b>CIRCLING MINIMA</b>	A,B: 930-2.4		C: 1030-4.0		D: 1420-5.0										
NM TO PN VOR	12	11	10	9	8	7	6	5	4	3	2	1.5	1	0.4	0.1
ALT (3.3° APCH PATH)	5100	4750	4400	4050	3700	3350	3000	2650	2300	1950	1600	1420	1250	1030	930

**SECTOR C**

**MISSED APPROACH:**  
TURN AS APPROPRIATE, TRACK 113°. CLIMB TO 3100FT.

NM TO PN VOR	25	15	12	9	7	5	3	0							
<b>CIRCLING MINIMA</b>	A,B: 870-2.4		C: 1030-4.0		D: 1420-5.0										
NM TO PN VOR	11.4	11	10	9	8	7	6	5	4	3	2	1.5	1	0.5	0.1
ALT (3.5° APCH PATH)	5100	4950	4580	4210	3840	3460	3090	2720	2350	1980	1610	1420	1230	1030	870

Changes: SDF, Editorial.

BPNDG01-172

AWIS 126.25	FIA BN CEN 135.5	FIA (ON GROUND) BN CEN 134.7	CTAF + AFRU 126.7	AFRU+PAL 126.7	Bearings are Magnetic Elevations in FEET AMSL
----------------	---------------------	---------------------------------	----------------------	-------------------	--

**DME USING PN DME  
REFERENCE WAYPOINT PN VOR**

10 NM MSA 4500

AD ELEV 82

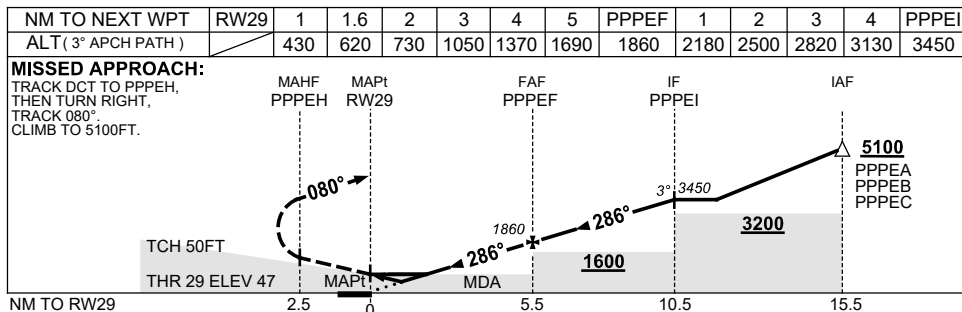
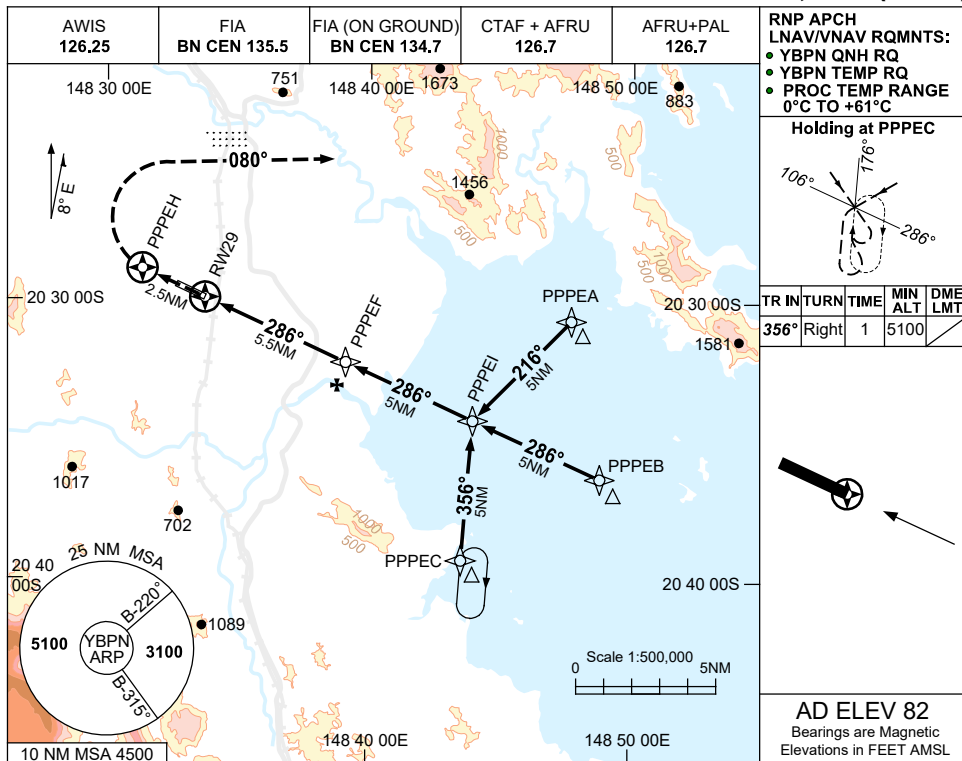
<b>SECTOR D</b>											<p><b>MISSED APPROACH:</b> TURN LEFT, TRACK 113°. CLIMB TO 3100FT.</p>				
NM FM VOR	25	15	13	10	8	6	5	4	0						
<b>CIRCLING MINIMA</b>				A,B: 910-2.4		C: 1030-4.0		D: 1420-5.0							
NM FM VOR	14.3	13	11	10	9	8	7	6	5	4	3	2.7	2	1.5	1.1
ALT (3° APCH PATH)	5100	4690	4050	3740	3420	3100	2780	2460	2150	1830	1510	1420	1190	1030	910

USE QNH

RNP RWY 29

24 MAR 2022

**PROSERPINE/WHITSUNDAY COAST, QLD (YBPN)**



**NOTES**

CATEGORY	A	B	C	D
LNAV/VNAV	<b>430</b> (383-2.1)			
LNAV	<b>620</b> (573-3.3)			
CIRCLING	<b>800</b> (718-2.4)		<b>1030</b> (948-4.0)	
ALTERNATE	(1218-4.4)		(1838-7.0)	

1. MAX IAS: INITIAL : 210KT.
2. COLOUR: SEE SPEC NOTICES.

Changes: CHART TITLE, PBN SPECIFICATION BOX.

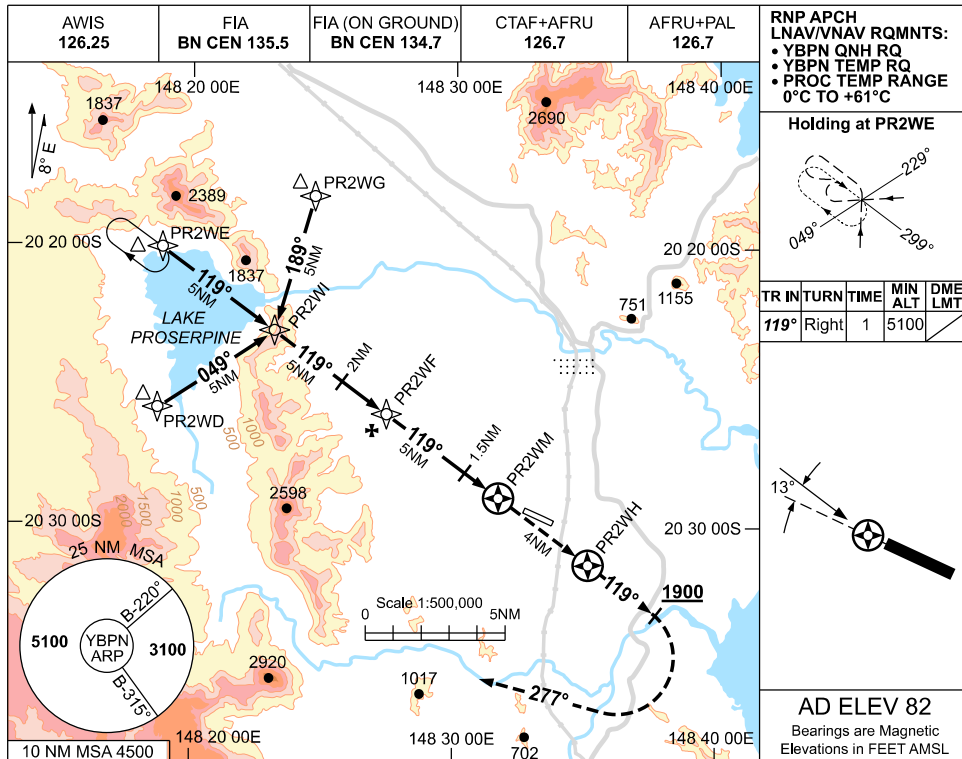
BPNGN01-170

USE QNH

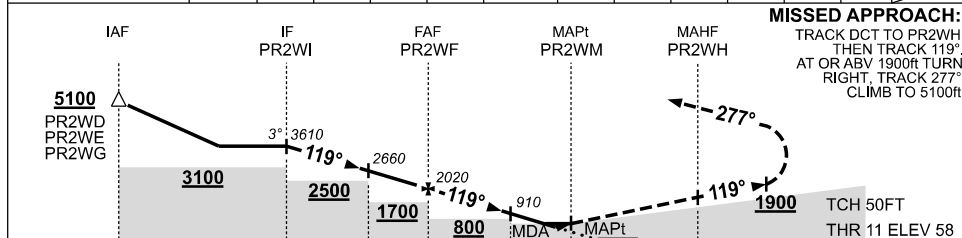
RNP RWY 11

27 NOV 2025

**PROSERPINE/WHITSUNDAY COAST, QLD (YBPN)**



NM TO NEXT WPT	PR2WI	4	3	2	1	PR2WF	4	3	2	1.5	0.8	0.4	PR2WM
ALT (3° APCH PATH)	3610	3300	2980	2660	2340	2020	1700	1380	1070	910	680	560	



**NOTES**

1. MAX IAS:  
 INITIAL : 210KT.  
 MAP TURN : 200KT.
2. HOLDING OVERLAPS WITH YBWN RNP S HOLDING. ACFT SEPARATION NOT ASSURED.
3. COLOUR: SEE SPEC NOTICES.

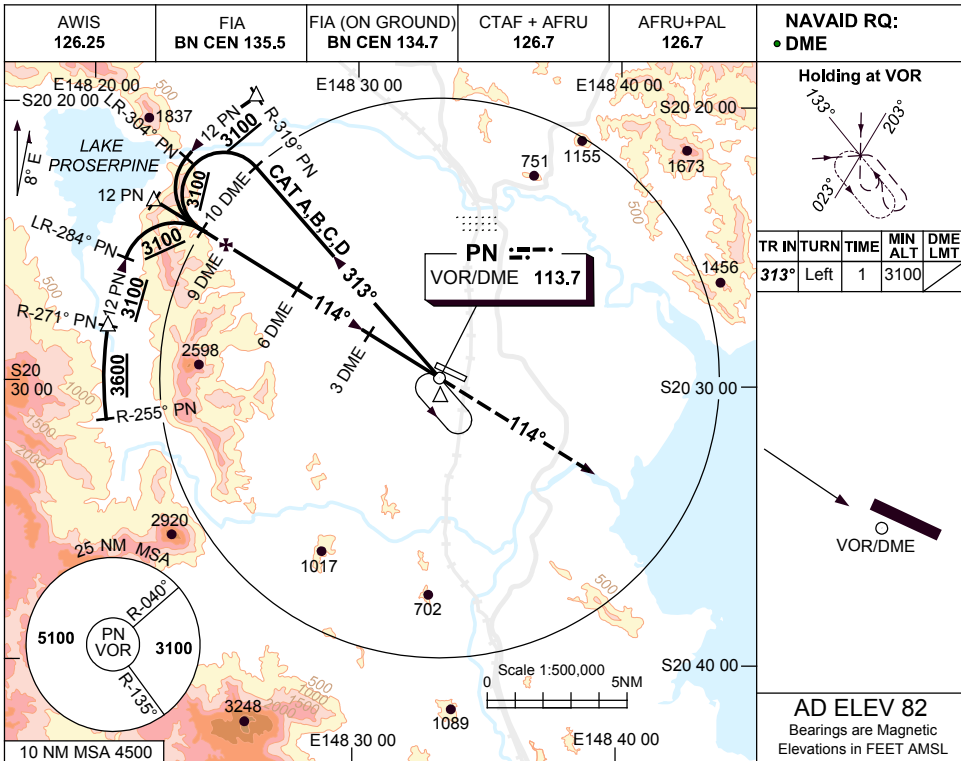
CATEGORY	A	B	C	D
LNAV/VNAV	560 (502-2.8)			
LNAV	680 (622-3.5)			
CIRCLING	800 (718-2.4)		1030 (948-4.0)	1420 (1338-5.0)
ALTERNATE	(1218-4.4)		(1448-6.0)	(1838-7.0)

Changes: Editorial.

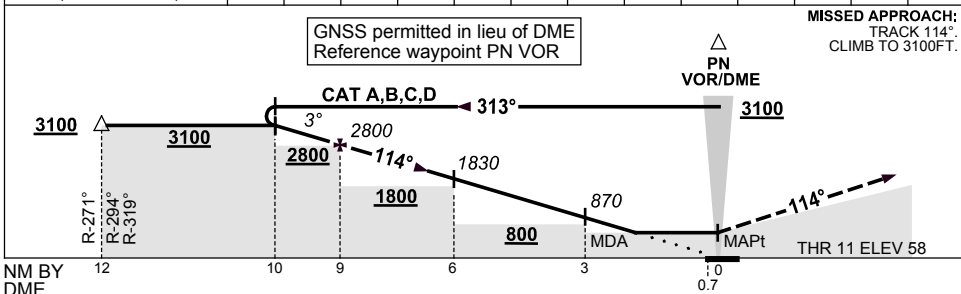
BPNGN02-185

**USE QNH** **VOR RWY 11**  
**PROSERPINE/WHITSUNDAY COAST, QLD (YBPN)**

**9 NOV 2017**



DIST BY DME	10	9	8	7	6	5	4	3	2.4				
ALT (3° APCH PATH)	3100	2800	2470	2150	1830	1510	1190	870	680				



CATEGORY	A	B	C	D
S-I VOR/DME	<b>680 (622-3.5)</b>			
CIRCLING	<b>800 (718-2.4)</b>	<b>1030 (948-4.0)</b>	<b>1420 (1338-5.0)</b>	
ALTERNATE	(1218-4.4)	(1448-6.0)	(1838-7.0)	

- NOTES**
- MAX IAS: INITIAL : 210KT.
  - COLOUR: SEE SPEC NOTICES.

Changes: CAT D, CIRCLING & ALTN MNM.

BPNV001-153

