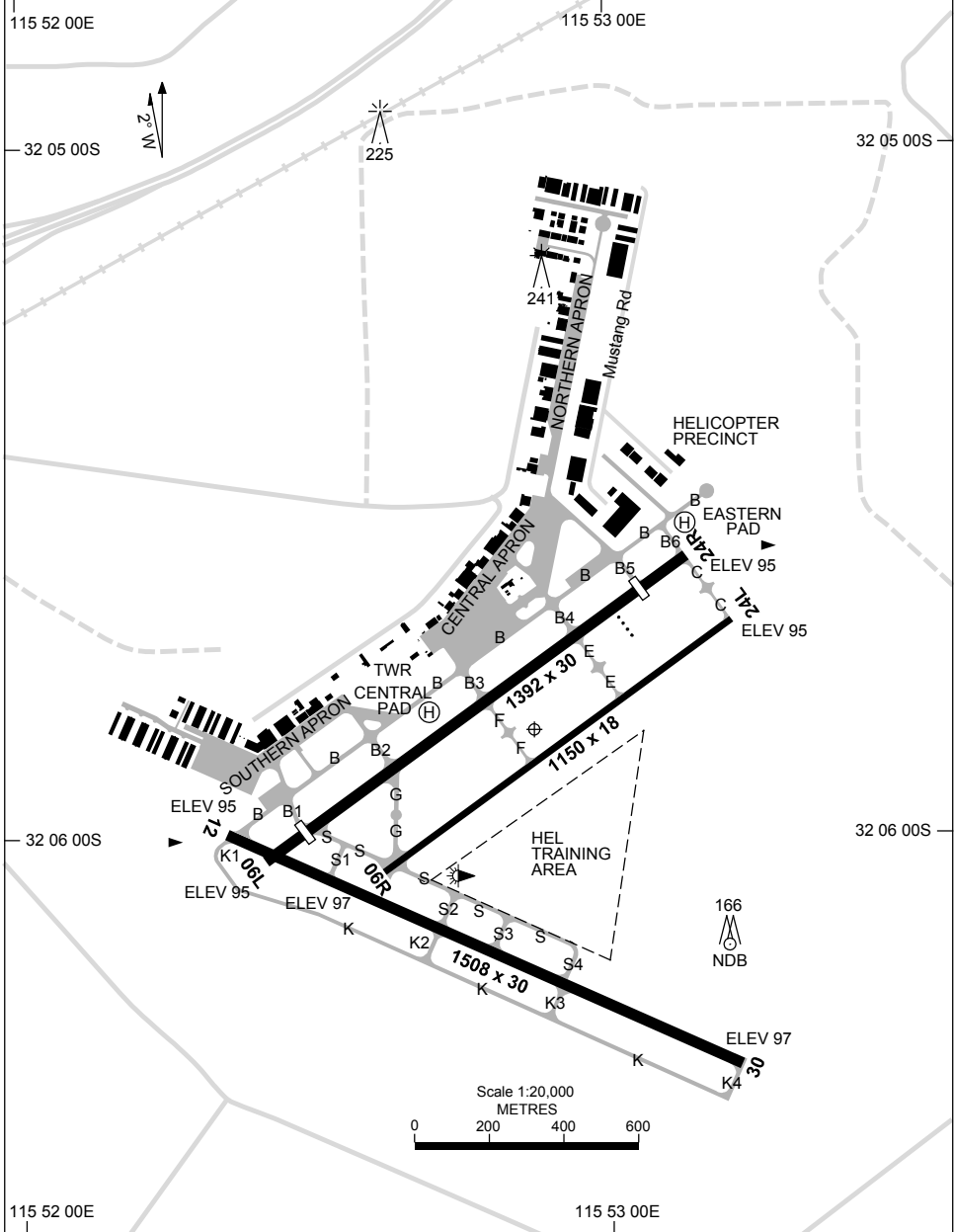


12 JUN 2025

ATIS (AWIS AH) 128.65 281	SMC 124.3	TWR (CTAF+AFRU AH) 118.1	FIA PH CEN 135.25	PAL+AA (AH) 123.9	Bearings are Magnetic Elevations in FEET AMSL
------------------------------	--------------	-----------------------------	----------------------	----------------------	--



Changes: ABN DCMSD, Editorial.

PJTAD01-183

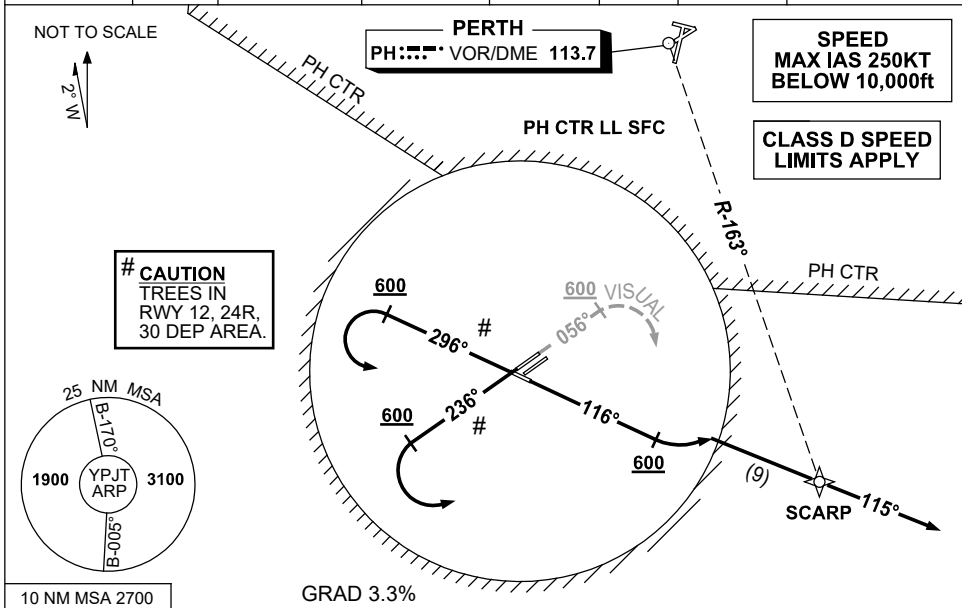
12 JUN 2025

ATIS (AWIS AH) 128.65 281	SMC 124.3	TWR (CTAF+AFRU AH) 118.1	FIA PH CEN 135.25	PAL+AA (AH) 123.9	Bearings are Magnetic Elevations in FEET AMSL
RWY	AERODROME LIGHTING				
	TAXIWAY : BLUE EDGE TWY B, B1, B2, B3, B4, B5, B6, K, K1, K2, K3 AND K4. RL : PAL+AA 123.9 , SDBY (15 SEC).				
06L ⁰⁵⁶ 236 24R	MIRL PAPI LEFT SIDE 3.0° 25FT MIRL				
06R ⁰⁵⁶ 236 24L	NIL NIL				
12 ¹¹⁶ 296 30	MIRL MIRL				
NOTES					

**STANDARD INSTRUMENT DEPARTURES (SID)
SCARP FIVE DEP - RUNWAYS EAST
PERTH/JANDAKOT, WA (YPJT)**

23 MAR 2023

ATIS (AWIS AH) 128.65 281	SMC 124.3	TWR (CTAF+AFRU AH) 118.1	FIA PH CEN 135.25	APP (PH) 123.6 132.95	DEP (PH) 118.7	PAL+AA (AH) 123.9	Bearings are Magnetic Elevations in FEET AMSL
------------------------------	--------------	--------------------------------	----------------------	--------------------------	-------------------	----------------------	--



SCARP FIVE DEPARTURE

PROC NOT AVBL FROM RWY 06R/24L

RWY 06L (VISUAL) (RNAV)

- Track 056°
- After passing 600ft turn RIGHT visually to intercept and track 115° to SCARP
- Continue tracking 115°, thence as cleared

REQUIREMENTS RWY 06L:

- Minimum Cloud Base 700ft
- ACFT must remain visual within Jandakot CTR (3NM from ARP) until the end of initial turn.
- Visual segment terminated when established on track to intercept 115° to SCARP.
Cross JT CTR boundary AT or ABV 700ft.

RWY 24R (RNAV)

- Track 236°
- At passing 600ft turn LEFT to intercept and track 115° to SCARP
- Continue tracking 115°, thence as cleared

RWY 12 (RNAV)

- Track 116°
- After passing 600ft turn LEFT to intercept and track 115° to SCARP
- Continue tracking 115°, thence as cleared

RWY 30 (RNAV)

- Track 296°
- After passing 600ft turn LEFT to intercept and track 115° to SCARP
- Continue tracking 115°, thence as cleared

COMMUNICATIONS FAILURE PROCEDURE

On recognition of communications failure

- Squawk 7600
- Maintain procedure track for two minutes, and
- CLIMB IF NECESSARY TO MINIMUM SAFE ALTITUDE, to maintain terrain clearance, then
- Proceed in accordance with the latest ATC route clearance acknowledged.

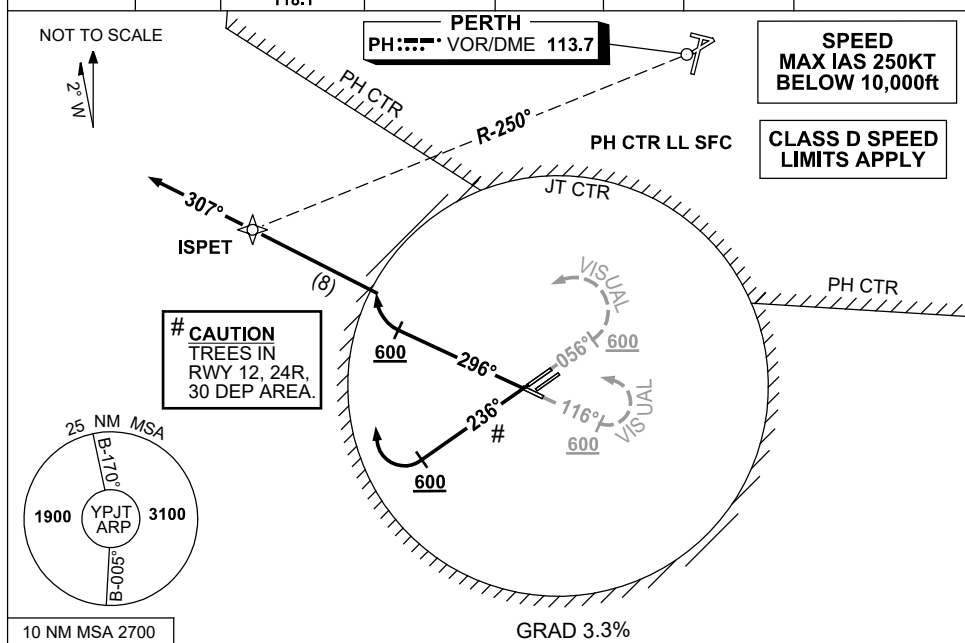
Changes: CHART TITLE, RQNMNTS NOTES, REF TO JT NDB REMOVED, MSA.

PJTDPO1-174

**STANDARD INSTRUMENT DEPARTURES (SID)
ISPET ONE DEP - RUNWAYS WEST
PERTH/JANDAKOT, WA (YPJT)**

15 JUN 2023

ATIS (AWIS AH) 128.65 281	SMC 124.3	TWR (CTAF+AFRU AH) 118.1	FIA PH CEN 135.25	APP (PH) 123.6 132.95	DEP (PH) 118.7	PAL+AA (AH) 123.9	Bearings are Magnetic. Elevations in FEET AMSL
------------------------------	--------------	--------------------------------	----------------------	--------------------------	-------------------	----------------------	---



ISPET ONE DEPARTURE
PROC NOT AVBL FROM RWY 06R/24L

RWY 06L (VISUAL) (RNAV)

- Track 056°
- After passing 600ft turn LEFT visually to intercept and track 307° to ISPET
- Continue tracking 307° thence as cleared.

RWY 12 (VISUAL) (RNAV)

- Track 116°
- After passing 600ft turn LEFT visually to intercept and track 307° to ISPET
- Continue tracking 307° thence as cleared.

REQUIREMENTS RWY 06L, RWY 12:

- Minimum Cloud Base 700ft
- ACFT must remain VISUAL within Jandakot CTR (3NM from ARP) until the end of initial turn.
- Visual segment terminated when established on track to intercept 307° to ISPET.
Cross JT CTR boundary AT or ABV 700ft

RWY 24R (RNAV)

- Track 236°
- After passing 600ft turn RIGHT to intercept and track 307° to ISPET
- Continue tracking 307° thence as cleared.

RWY 30 (RNAV)

- Track 296°
- After passing 600ft turn RIGHT to intercept and track 307° to ISPET
- Continue tracking 307° thence as cleared.

COMMUNICATIONS FAILURE PROCEDURE

- On recognition of communications failure
- Squawk 7600
 - Maintain procedure track for two minutes, and
 - CLIMB IF NECESSARY TO MINIMUM SAFE ALTITUDE, to maintain terrain clearance, then
 - Proceed in accordance with the latest ATC route clearance acknowledged.

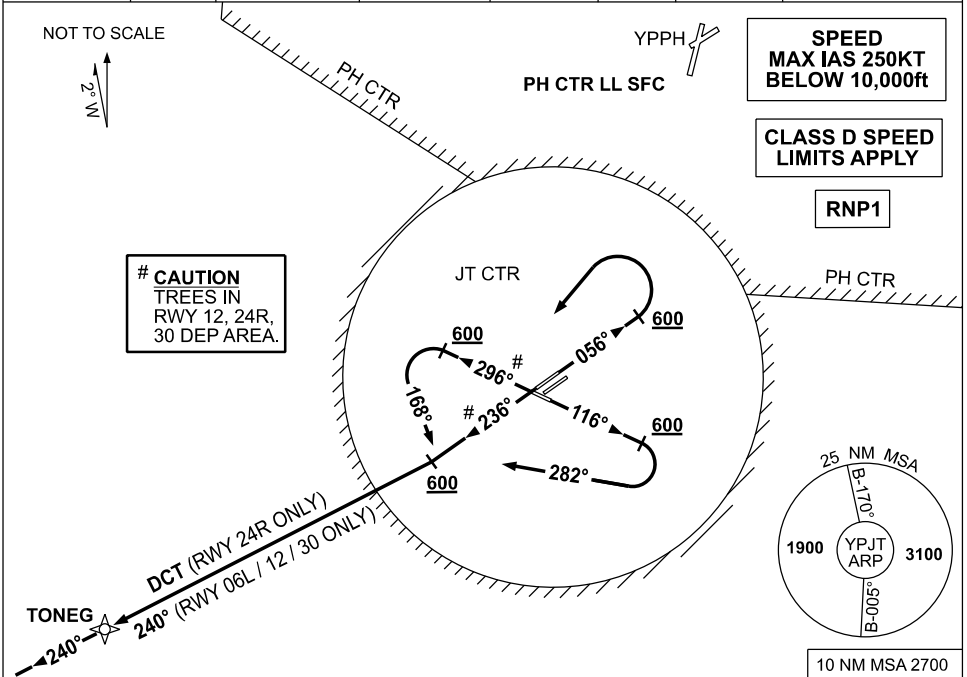
Changes: CHART TITLE, WPT ISPET.

PJTDP02-175

**STANDARD INSTRUMENT DEPARTURES (SID)
TONEG SIX DEPARTURE (RNAV)
PERTH/JANDAKOT, WA (YPJT)**

19 MAR 2026

ATIS (AWIS AH) 128.65 281	SMC 124.3	TWR (CTAF+AFRU AH) 118.1	FIA PH CEN 135.25	APP (PH) 123.6 132.95	DEP (PH) 118.7	PAL+AA (AH) 123.9	Bearings are Magnetic Elevations in FEET AMSL
------------------------------	--------------	--------------------------------	----------------------	--------------------------	-------------------	----------------------	--



TONEG SIX DEPARTURE

RWY 06L

- GRAD 3.3%
MAX IAS 150KT until established to intercept TRK to TONEG
- Track 056°
- AT or ABV 600ft turn LEFT to intercept and track 240° to TONEG
- Continue tracking 240°

RWY 24R

- GRAD 3.3%
- Track 236°
- AT or ABV 600ft track DCT to TONEG
- Continue tracking 240°

RWY 12

- GRAD 3.3%
MAX IAS 150KT until established to intercept TRK to TONEG
- Track 116°
- AT or ABV 600ft turn RIGHT track 282°
- Intercept and track 240° to TONEG
- Continue tracking 240°

RWY 30

- GRAD 3.3%
MAX IAS 150KT until established to intercept TRK to TONEG
- Track 296°
- AT or ABV 600ft, turn LEFT track 168°
- Intercept and track 240° to TONEG
- Continue tracking 240°

COMMUNICATIONS FAILURE PROCEDURE

On recognition of communications failure

- Squawk 7600
- Maintain procedure track for two minutes, and
- CLIMB IF NECESSARY TO MINIMUM SAFE ALTITUDE, to maintain terrain clearance, then
- Proceed in accordance with the latest ATC route clearance acknowledged.

Changes: TRACKING FROM TONEG.

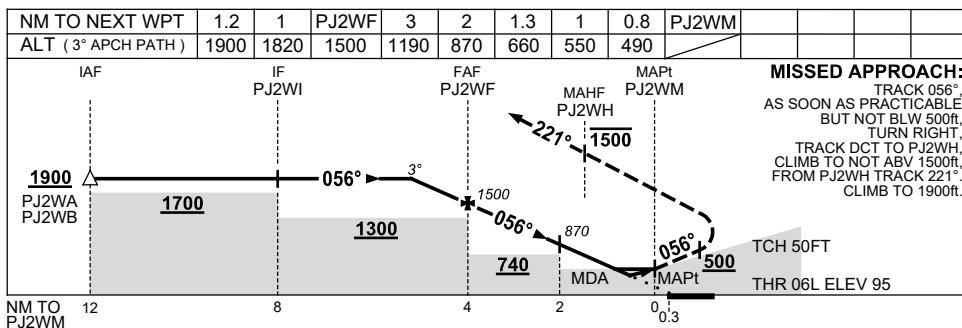
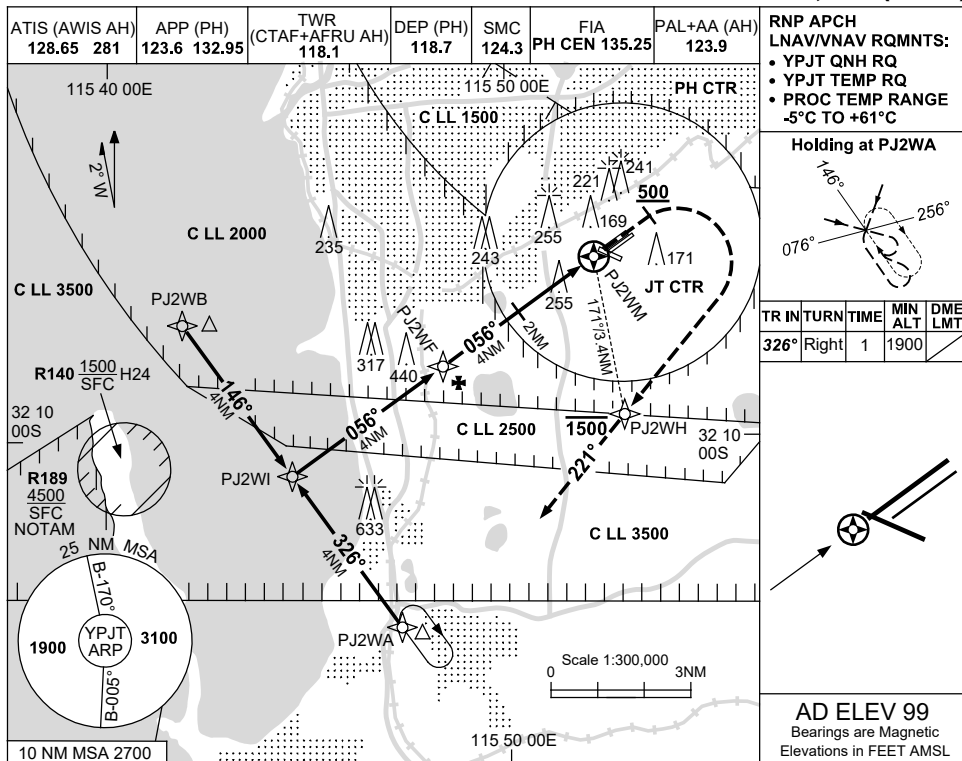
PJTDP03-186

USE QNH

RNP RWY 06L

12 JUN 2025

PERTH/JANDAKOT, WA (YPJT)



NOTES

CATEGORY	A	B	C	D
LNAV/VNAV	490 (395-2.2)		NOT APPLICABLE	
LNAV	660 (561-3.1)			
CIRCLING	800 (701-2.4)			
ALTERNATE	(1201-4.4)			

1. MAX IAS : HOLDING : 160KT.
2. ACFT ARE TO REACH 1500FT OR BELOW AS SOON AS PRACTICABLE AFTER PASSING FAF.
3. PROC NOT AVBL FOR TRAINING.

Changes: R140, WPT NAMING CONVENTION.

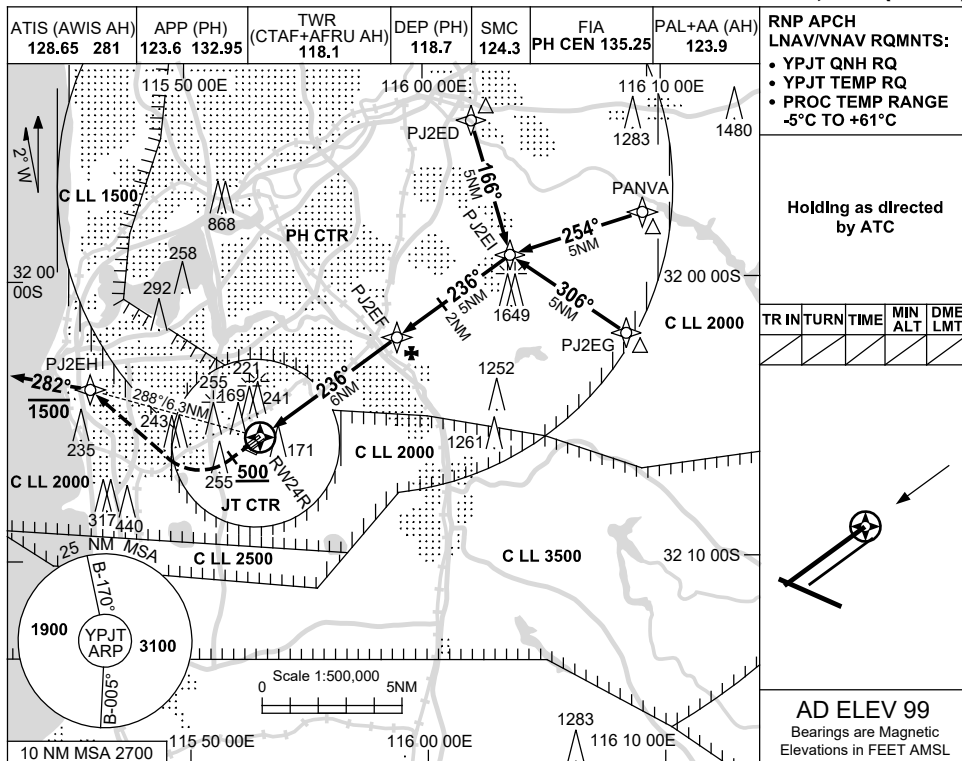
PJTGN01-183

USE QNH

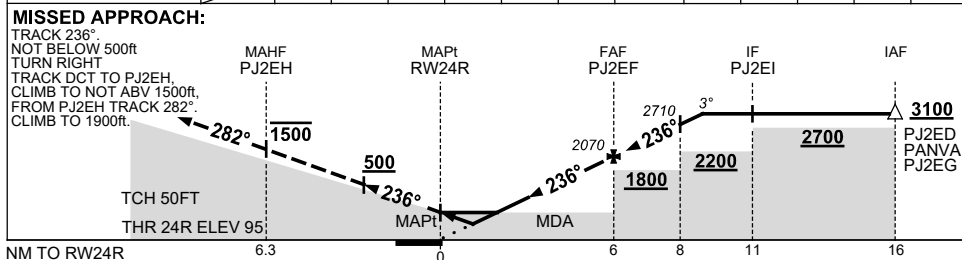
RNP RWY 24R

12 JUN 2025

PERTH/JANDAKOT, WA (YPJT)



NM TO NEXT WPT	RW24R	1	1.6	2	3	4	5	PJ2EF	1	2	3	3.2
ALT (3° APCH PATH)		470	660	780	1100	1420	1740	2070	2390	2710	3030	3100



NOTES

CATEGORY	A	B	C	D
LNAV/VNAV	470 (375-2.1)			NOT APPLICABLE
LNAV	660 (561-3.1)			
CIRCLING	800 (701-2.4)		880 (781-4.0)	
ALTERNATE	(1201-4.4)		(1281-6.0)	

1. MAX IAS:
INITIAL MISSED APCH TURN : 210KT.
2. PROC NOT AVBL FOR TRAINING.

Changes: WPT NAMING CONVENTION.

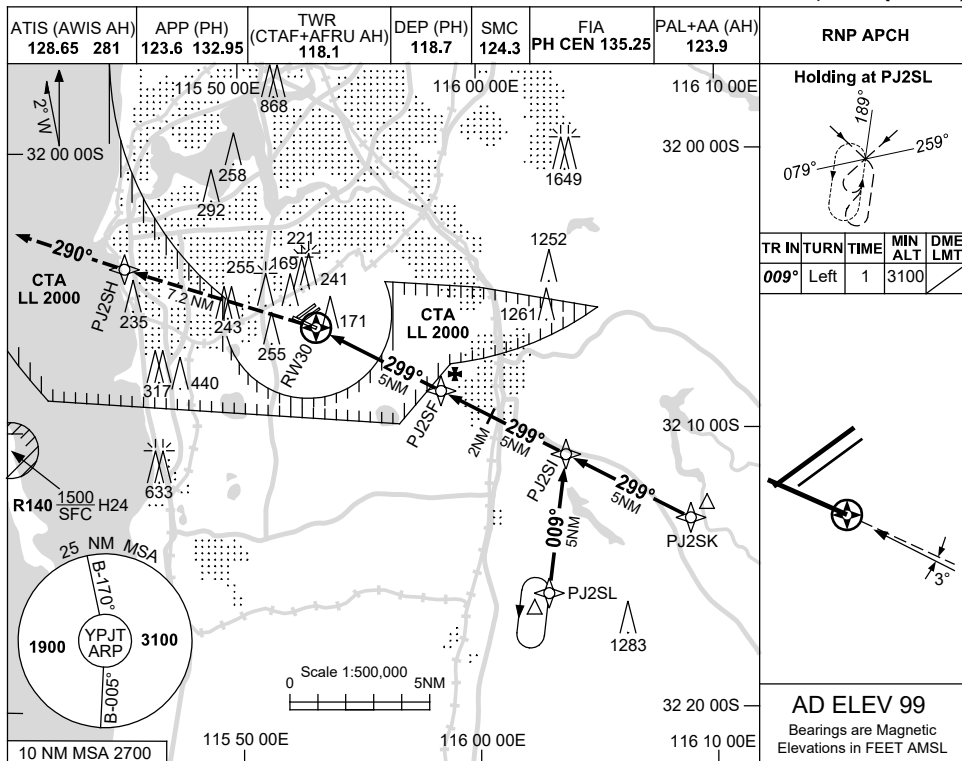
PJTGN02-133

USE QNH

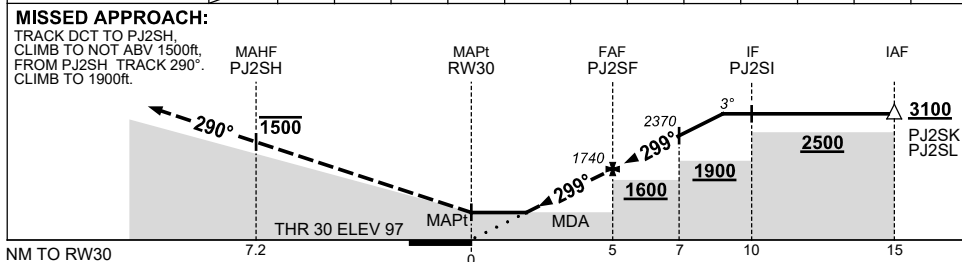
RNP RWY 30

12 JUN 2025

PERTH/JANDAKOT, WA (YPJT)



NM TO NEXT WPT	RW30	1.6	2	3	4	PJ2SF	1	2	3	4	4.3	
ALT (3° APCH PATH)		660	780	1100	1420	1740	2050	2370	2690	3010	3100	



NOTES

CATEGORY	A	B	C	D
LNAV	660 (561-3.2)		NOT APPLICABLE	
CIRCLING	800 (701-2.4)			
ALTERNATE	(1201-4.4)			

1. TO REMAIN CLEAR OF CTA LL 2000, DO NOT EXCEED 3° DESCENT PROFILE.
2. PROC NOT AVBL FOR TRAINING.

Changes: R140, WPT NAMING CONVENTION.

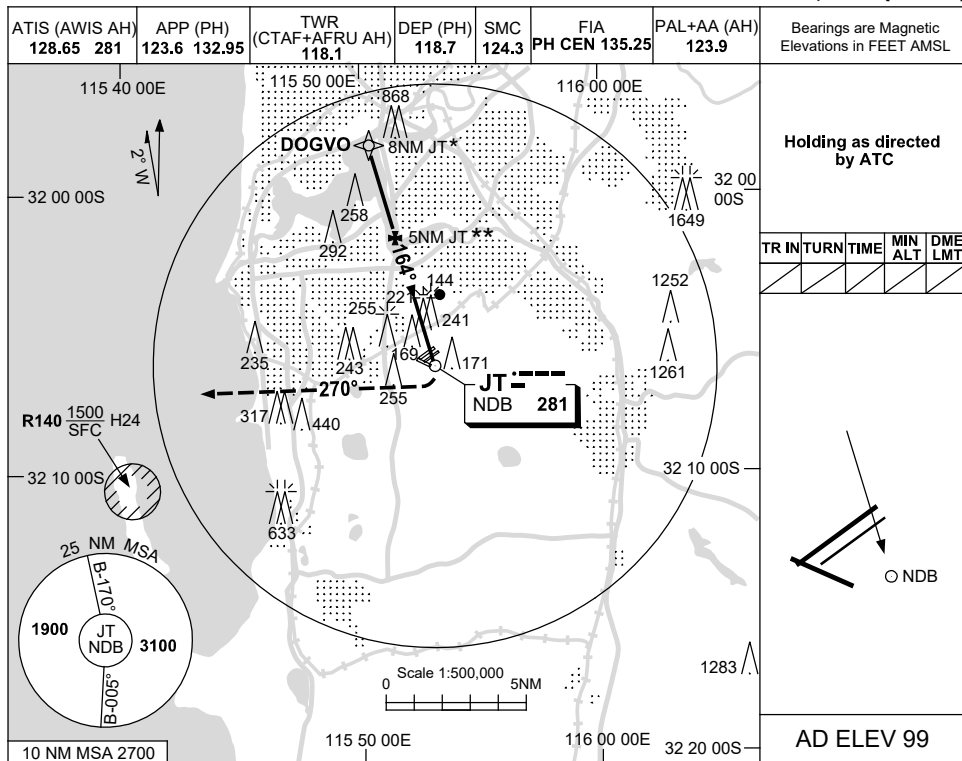
PJTGN03-183

USE QNH

NDB-A

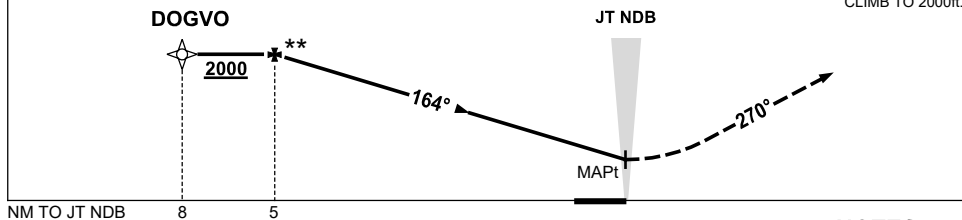
12 JUN 2025

PERTH/JANDAKOT, WA (YPJT)



DME DIST	NOT APPLICABLE						
ALT							

MISSED APPROACH:
TURN RIGHT,
TRACK 270°,
CLIMB TO 2000ft.



NOTES

- *1. ACFT WILL BE RADAR VECTORED TO INTERCEPT FINAL TRACK BETWEEN 8NM & 5NM JT.
- **2. WHEN ESTABLISHED RADAR WILL ADVISE DESCENT CLEARANCE FROM 2000ft, INSIDE 5NM JT.

CATEGORY	A	B	C	D
CIRCLING	800 (701-2.4)		880 (781-4.0)	NOT APPLICABLE
ALTERNATE	(1201-4.4)		(1281-6.0)	

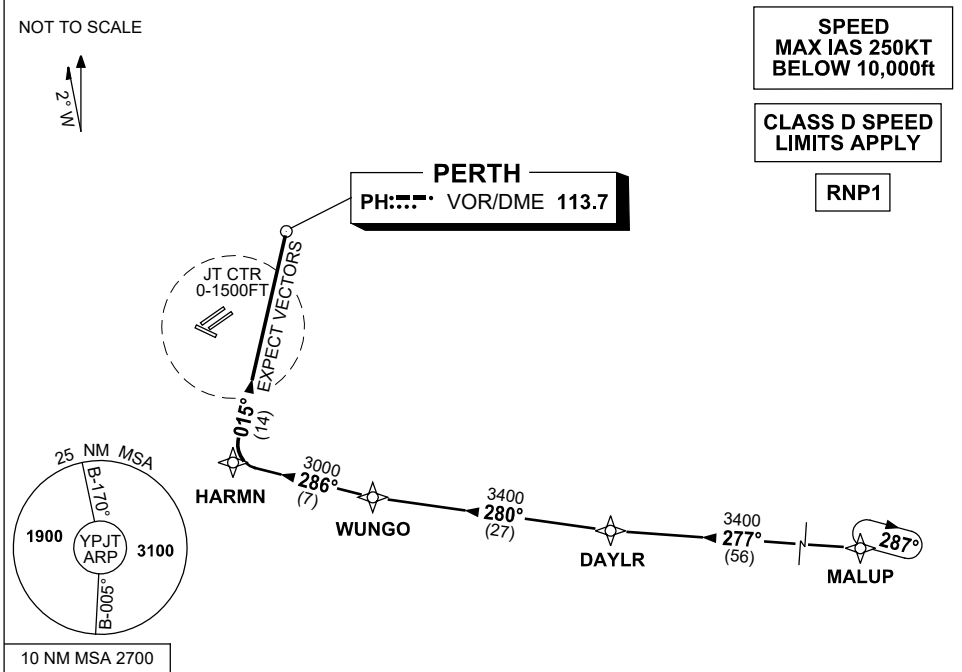
Changes: R140.

PJTNB01-183

**STANDARD INSTRUMENT ARRIVAL (STAR)
JANDAKOT THREE WHISKEY ARRIVAL (RNAV)
PERTH/JANDAKOT, WA (YPJT)**

13 JUN 2024

ATIS (AWIS AH) 128.65 281	SMC 124.3	TWR (CTAF+AFRU AH) 118.1	FIA PH CEN 135.25	APP (PH) 123.6 132.95	DEP (PH) 118.7	PAL+AA (AH) 123.9	Bearings are Magnetic Elevations in FEET AMSL
------------------------------	--------------	--------------------------------	----------------------	--------------------------	-------------------	----------------------	--



TRANSITIONS:

- MALUP:** (NON-JET) From MALUP track 277° to DAYLR
- Turn RIGHT, track 280° to WUNGO
 - Then follow ARRIVAL instructions

- ARRIVAL:** **JANDAKOT THREE WHISKEY**
- From WUNGO turn RIGHT
- Track 286° to HARMN
 - Turn RIGHT, track 015° to PH VOR
 - Expect radar vectors to YPJT

COMMUNICATIONS FAILURE: PROCEDURE IN IMC

- Squawk 7600
- Comply with vertical navigation requirements and maintain minimum safe altitude.
- IF UNDER PILOT NAVIGATION track via the STAR clearance to Jandakot NDB, then in accordance with ERSA, EMERG.
- IF UNDER RADAR VECTOR, maintain vector for 2 minutes, then track to the Jandakot NDB, then in accordance with ERSA, EMERG.

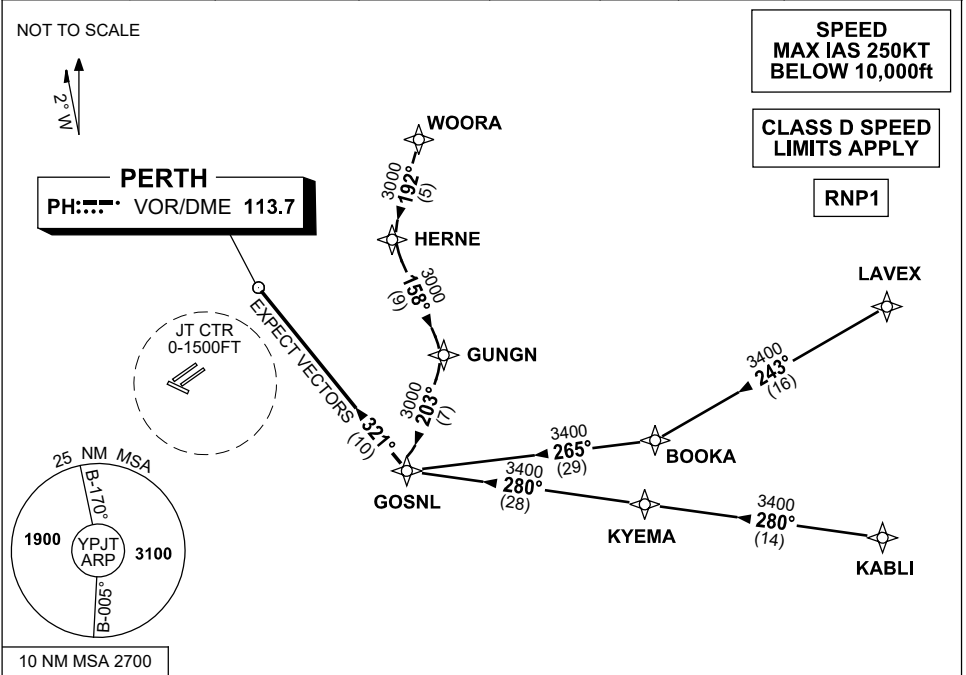
Changes: MALUP REPLACES HAMTN, VALIDITY INDICATOR, Editorial.

PJTSR01-179

**STANDARD INSTRUMENT ARRIVAL (STAR)
JANDAKOT THREE GOLF ARRIVAL (RNAV)
PERTH/JANDAKOT, WA (YPJT)**

13 JUN 2024

ATIS (AWIS AH) 128.65 281	SMC 124.3	TWR (CTAF+AFRU AH) 118.1	FIA PH CEN 135.25	APP (PH) 123.6 132.95	DEP (PH) 118.7	PAL+AA (AH) 123.9	Bearings are Magnetic Elevations in FEET AMSL
------------------------------	--------------	--------------------------------	----------------------	--------------------------	-------------------	----------------------	--



TRANSITIONS:

<p>WOORA: From WOORA to GOSNL</p> <ul style="list-style-type: none"> • Track 192° to HERNE, • Turn LEFT, track 158° to GUNGN, • Turn RIGHT, track 203° to GOSNL, • Then follow ARRIVAL instructions 	<p>LAVEX: From LAVEX to GOSNL (NON-JET)</p> <ul style="list-style-type: none"> • Track 243° to BOOKA, • Turn RIGHT, track 265° to GOSNL, • Then follow ARRIVAL instructions
	<p>KABL I: From KABL I to GOSNL (JET)</p> <ul style="list-style-type: none"> • Track 280° to KYEMA, • Track 280° to GOSNL, • Then follow ARRIVAL instructions

ARRIVAL: **JANDAKOT THREE GOLF**

From GOSNL, turn RIGHT, track 321° to PH VOR

- Expect radar vectors to YPJT

COMMUNICATIONS FAILURE: PROCEDURE IN IMC

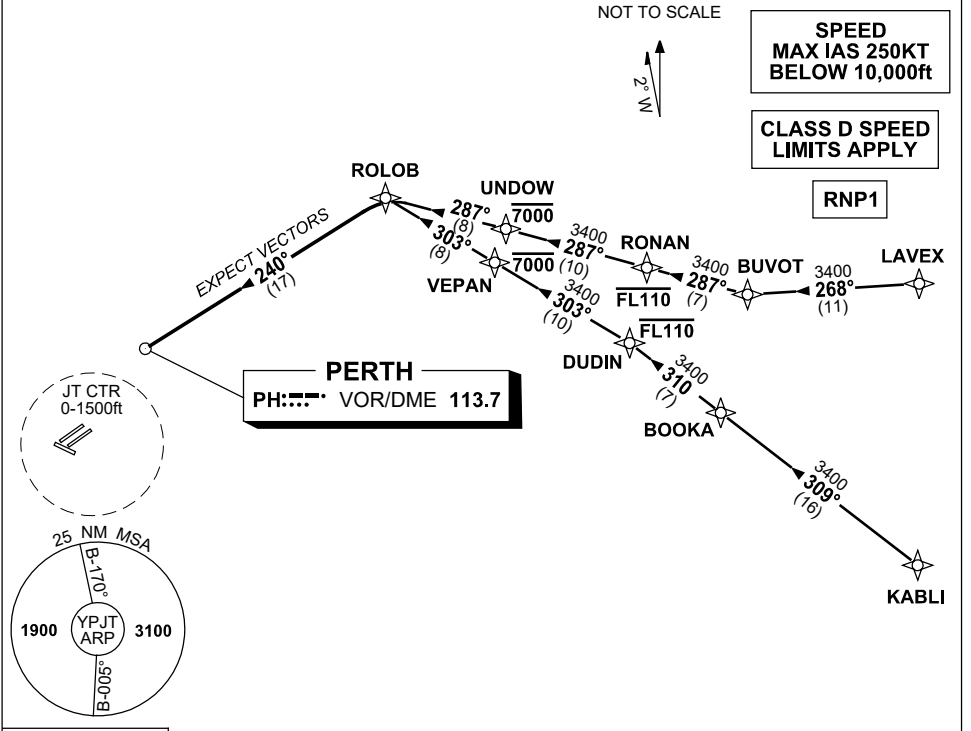
- Squawk 7600
- Comply with vertical navigation requirements and maintain minimum safe altitude.
- IF UNDER PILOT NAVIGATION track via the STAR clearance to Jandakot NDB, then in accordance with ERSA, EMERG.
- IF UNDER RADAR VECTOR, maintain vector for 2 minutes, then track to the Jandakot NDB, then in accordance with ERSA, EMERG.

Changes: LAVEX REPLACES GRENE, KABL I REPLACES BEVLY, VALIDITY INDICATOR, Editorial. PJTSR02-179

**STANDARD INSTRUMENT ARRIVAL (STAR)
JANDAKOT THREE ROMEO ARRIVAL (RNAV)
PERTH/JANDAKOT, WA (YPJT)**

13 JUN 2024

ATIS (AWIS AH) 128.65 281	SMC 124.3	TWR (CTAF+AFRU AH) 118.1	FIA PH CEN 135.25	APP (PH) 123.6 132.95	DEP (PH) 118.7	PAL+AA (AH) 123.9	Bearings are Magnetic Elevations in FEET AMSL
------------------------------	--------------	--------------------------------	----------------------	--------------------------	-------------------	----------------------	--



10 NM MSA 2700

TRANSITIONS:

LAVEX: From LAVEX, track 268° to BUVOT,
(NON-JET) • Turn RIGHT, track 287° to RONAN,
 • **Cross** RONAN AT or BLW FL110,
 • Track 287° to UNDOU,
 • **Cross** UNDOU AT or BLW 7000ft,
 • Track 287° to ROLOB,
 Then follow ARRIVAL instructions

KABLI: From KABLI, track 309° to BOOKA,
(JET) • Track 310° to DUDIN,
 • **Cross** DUDIN AT or BLW FL110,
 • Turn LEFT, track 303° to VEPAN,
 • **Cross** VEPAN AT or BLW 7000ft,
 • Track 303° to ROLOB,
 Then follow ARRIVAL instructions

ARRIVAL: JANDAKOT THREE ROMEO

- From ROLOB turn LEFT
- Track 240° to PH VOR
 - Expect radar vectors to YPJT

COMMUNICATIONS FAILURE: PROCEDURE IN IMC

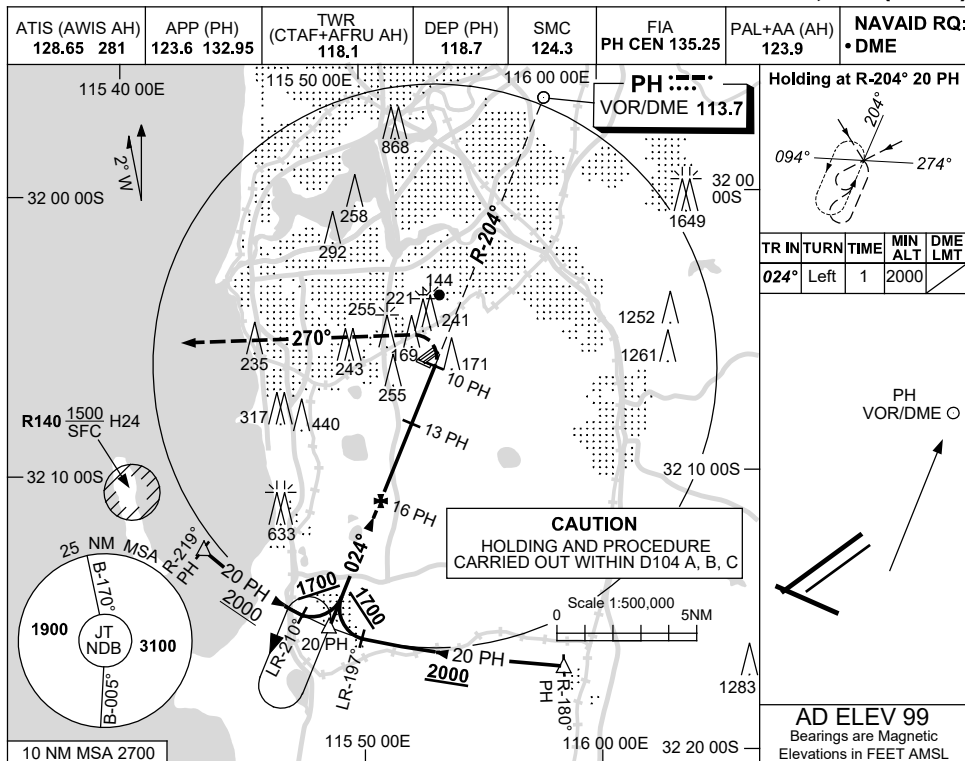
- Squawk 7600
- Comply with vertical navigation requirements and maintain minimum safe altitude.
- IF UNDER PILOT NAVIGATION track via the STAR clearance to Jandakot NDB, then in accordance with ERSAs, EMERGENCY.
- IF UNDER RADAR VECTOR, maintain vector for 2 minutes, then track to the Jandakot NDB, then in accordance with ERSAs, EMERGENCY.

USE QNH

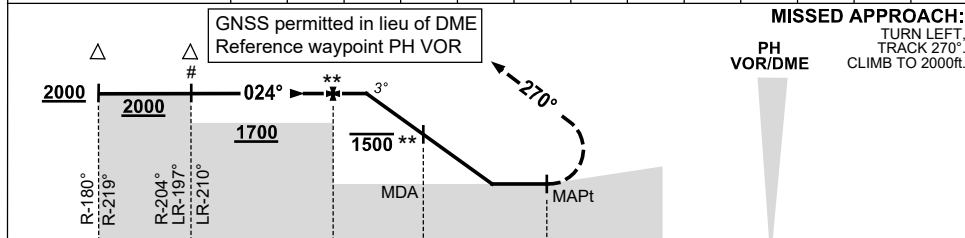
VOR-A

12 JUN 2025

PERTH/JANDAKOT, WA (YPJT)



DIST TO PH DME	14.6	14	13	12	11	10.7						
ALT (3° APCH PATH)	2000	1820	1500	1200	880	800						



NM TO PH DME

NOTES

#1. ACFT TO CONTACT JT TOWER BEFORE DESCENT BELOW 2000ft WHEN CTR ACTIVATED.

**2. ACFT ARE TO REACH 1500ft OR BELOW AS SOON AS PRACTICABLE AFTER PASSING FAF AND BY NO LATER THAN 13 DME PH.

CATEGORY	A	B	C	D
CIRCLING	800 (701-2.4)		880 (781-4.0)	NOT APPLICABLE
ALTERNATE	(1201-4.4)		(1281-6.0)	

Changes: R140.

PJTVO01-183