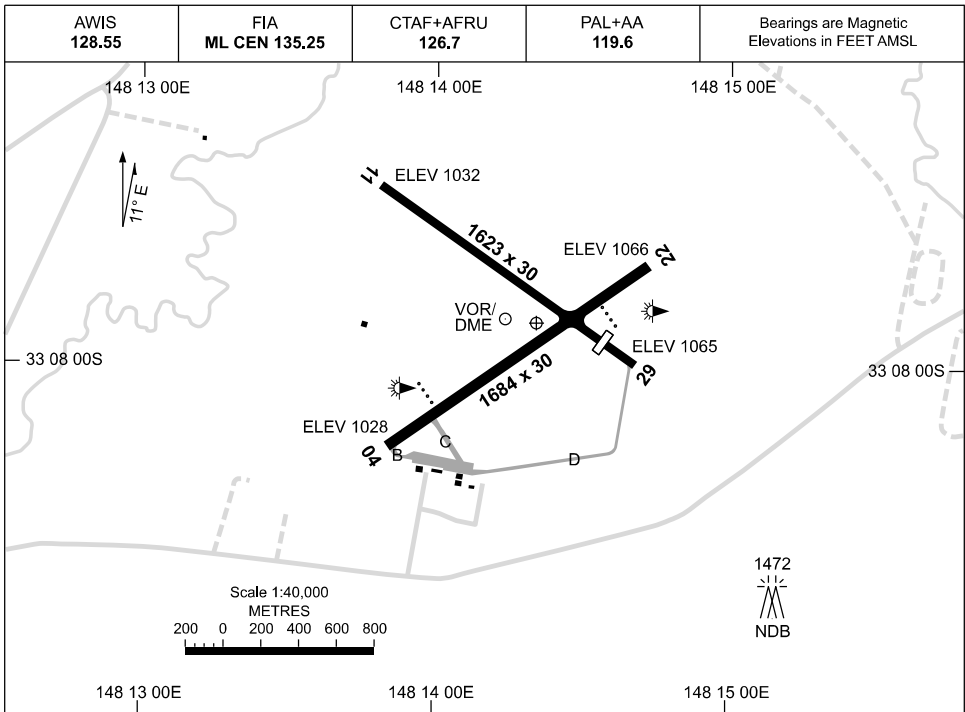


04 SEP 2025

AD ELEV 1069
33 07 53S 148 14 21E

AERODROME CHART
PARKES, NSW (YPKS)



	AERODROME LIGHTING
RWY	TAXIWAY : BLUE EDGE RUNWAY : PAL+AA 119.6 , SDBY (1 MIN)
04 <small>044</small>	PAPI 3.0° 48FT LIRL RTIL
<small>224</small> 22	PAPI 3.0° 48FT LIRL RTIL
11 <small>114</small>	NIL
<small>294</small> 29	NIL

NOTES

1. AWIS FREQ RQ ONE ONE-SECOND PULSE TO ACTIVATE.
2. FIA FREQ 135.25 AVBL IN CIRCUIT AREA.

Changes: TWY A DELETED, Editorial.

PKSAD01-184

DME or GNSS ARRIVAL PROCEDURES PARKES, NSW (YPKS)

24 MAR 2022

AWIS 128.55	FIA ML CEN 135.25	CTAF+AFRU 126.7	PAL+AA 119.6		Bearings are Magnetic Elevations in FEET AMSL
----------------	----------------------	--------------------	-----------------	--	--

25 NM MSA
3900
PKS VOR or NDB

**DME USING PKS DME
REFERENCE WAYPOINT PKS VOR**

PKS VOR/DME 112.0
PKS NDB 242

10 NM MSA 3800

AD ELEV 1069

BHI TO PKS

3400 088°
PKS VOR or NDB

VOR or NDB

3400 2500 2780 3900
3° MDA MMAPt

MISSED APPROACH:

TURN LEFT,
TRACK 280°. CLIMB TO 3900FT.

MAX IAS IN MAP
TURN 180KT.

NM TO PKS VOR	25	15	10	5	0														
CIRCLING MINIMA	A,B: 2070-2.4		C: 2370-4.0		D: N/A														
NM TO PKS VOR	6.9	6	5	4	3.7	3	2.7												
ALT (3° APCH PATH)	3400	3100	2780	2460	2370	2150	2070												

BTH TO PKS

6100 273°
PKS VOR or NDB

VOR or NDB

3900 3500 2800 2400 3900
3° MDA MMAPt

MISSED APPROACH:

TURN LEFT,
TRACK 230°. CLIMB TO 3900FT.

NOTE:
1. DME COVERAGE NOT AVBL AT 3900FT BEYOND 26 NM FM VOR.

NM TO PKS VOR	27	15	14	7	5	4	2	0											
CIRCLING MINIMA	A,B: 2240-2.4		C: 2370-4.0		D: N/A														
NM TO PKS VOR	6.7	6	5	4	3	2	1.9	1.5											
ALT (3° APCH PATH)	3900	3670	3360	3040	2720	2400	2370	2240											

VIRUR TO PKS

6100 278°
PKS VOR or NDB

VOR or NDB

3900 3500 2800 2600 3900
3° MDA MMAPt

MISSED APPROACH:

TURN RIGHT,
TRACK 325°. CLIMB TO 3900FT.

NOTE:
1. DME COVERAGE NOT AVBL AT 3900FT BEYOND 22 NM FM VOR.

NM TO PKS VOR	27	15	14	7	5	2	0												
CIRCLING MINIMA	A,B: 2240-2.4		C: 2370-4.0		D: N/A														
NM TO PKS VOR	6.1	6	5	4	3	2	1.3	1	0.9										
ALT (3° APCH PATH)	3900	3870	3550	3230	2920	2600	2370	2280	2240										

Changes: MINIMA, DIST/ALT TABLE, PAL+AA.

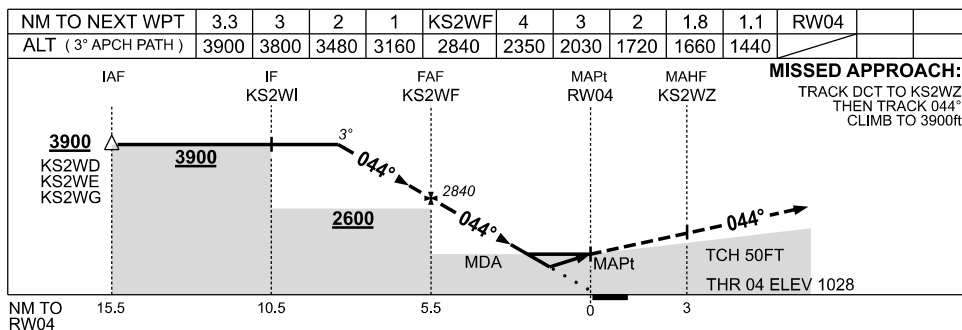
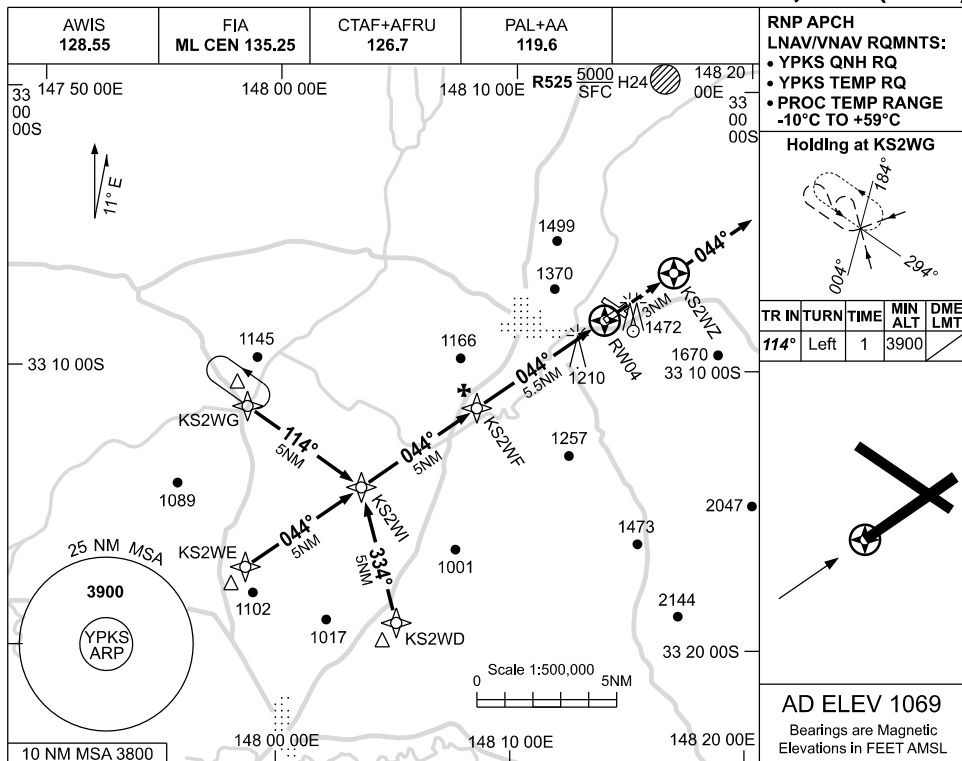
PKSDG01-170

USE QNH

RNP RWY 04

PARKES, NSW (YPKS)

19 MAR 2026



NOTES

- MAX IAS: INITIAL : 230KT.

CATEGORY	A	B	C	D
LNAV/VNAV		1440 (412-2.3)		NOT APPLICABLE
LNAV		1660 (632-3.6)		
CIRCLING	2070 (1001-2.4)		2370 (1301-4.0)	
ALTERNATE	(1501-4.4)		(1801-6.0)	

Changes: WPT NAMING CONVENTION.

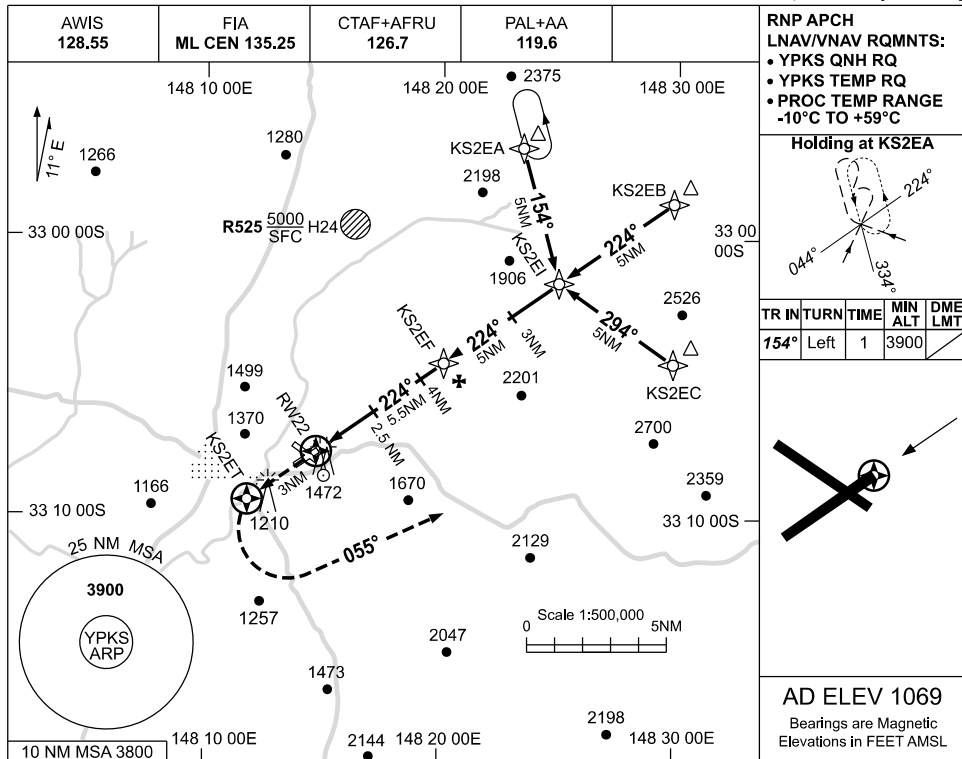
PKSGN01-186

USE QNH

RNP RWY 22

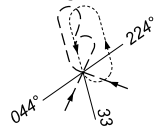
PARKES, NSW (YPKS)

19 MAR 2026

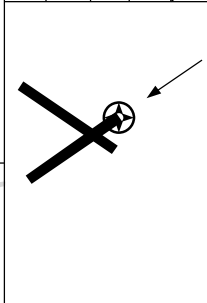


RNP APCH
LNAV/VNAV RQMTS:
• YPKS QNH RQ
• YPKS TEMP RQ
• PROC TEMP RANGE
-10°C TO +59°C

Holding at KS2EA

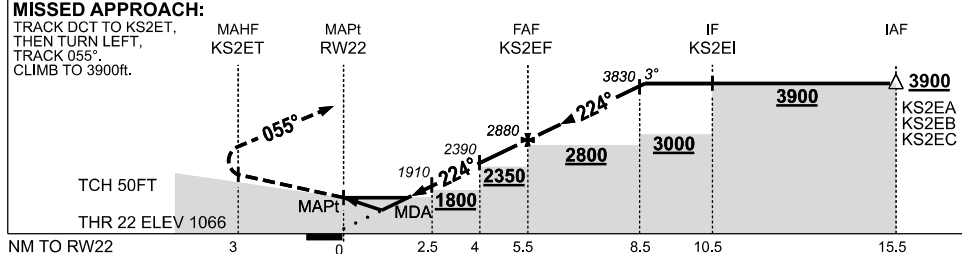


TR	IN TURN	TIME	MIN ALT	DME LMT
154°	Left	1	3900	



AD ELEV 1069
Bearings are Magnetic
Elevations in FEET AMSL

NM TO NEXT WPT	RW22	1.3	1.9	2.5	3	4	5	KS2EF	1	2	3	3.2	
ALT (3° APCH PATH)		1530	1730	1910	2070	2390	2710	2880	3200	3520	3830	3900	



NOTES

CATEGORY	A	B	C	D
LNAV/VNAV		1530 (464-2.6)		NOT APPLICABLE
LNAV		1730 (661-3.8)		
CIRCLING	2070 (1001-2.4)		2370 (1301-4.0)	
ALTERNATE		(1501-4.4)	(1801-6.0)	

1. MAX IAS:
INITIAL : 230KT.

Changes: PROFILE VIEW ALTS, WPT NAMING CONVENTION.

PKSGN02-186

