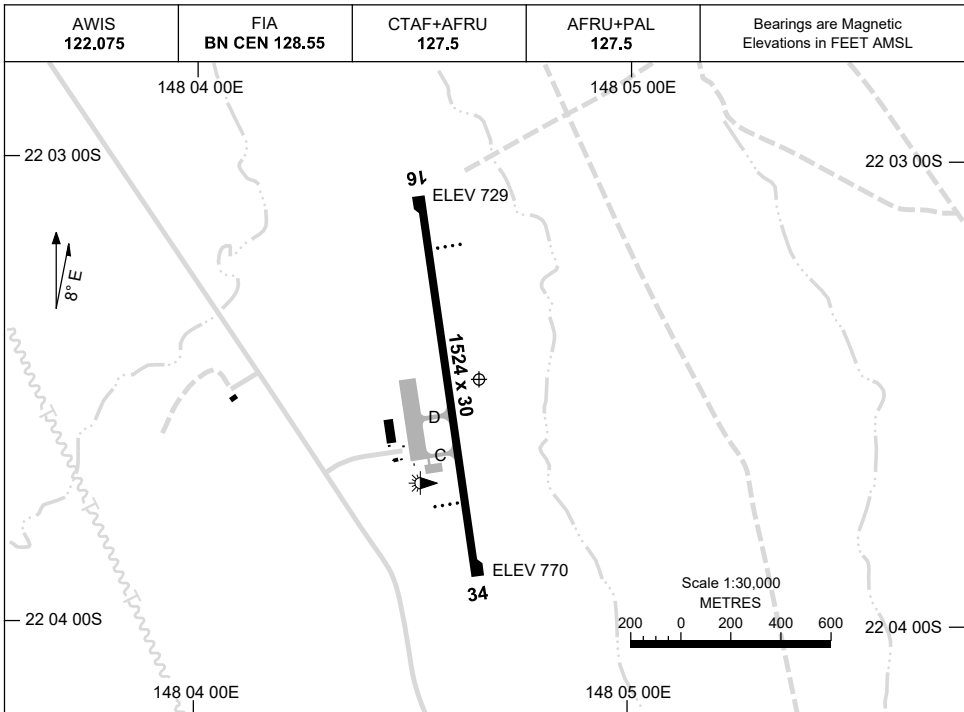


30 NOV 2023

AD ELEV 770
22 03 28S 148 04 39E

AERODROME CHART
MORANBAH, QLD (YMRB)



	AERODROME LIGHTING
RWY	RL : AFRU+PAL 127.5 , SDBY
16 ¹⁶³	PAPI 3.0° 48FT LIRL RTIL
³⁴³ 34	PAPI 3.0° 48FT LIRL RTIL

NOTES

1. AWIS RQ 1 SEC PULSE TO ACTIVATE.
2. FIA FREQ 128.55 AVBL CIRCUIT AREA.
FOR ON GROUND COM USE BN CEN 118.45.

Changes: SWITCHOVER TIME REMOVED, PAPI HEIGHT, Editorial.

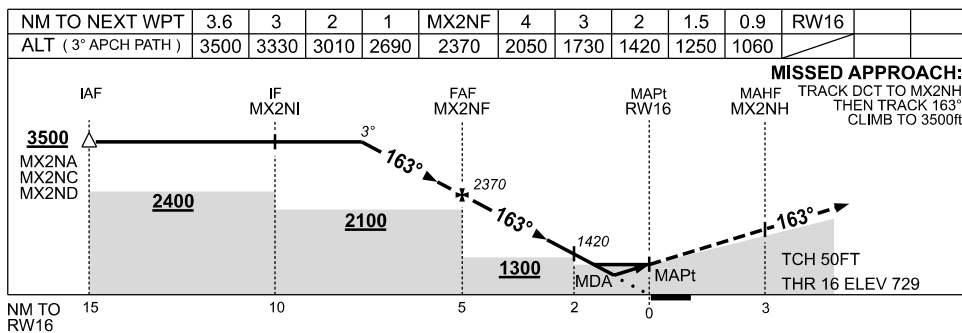
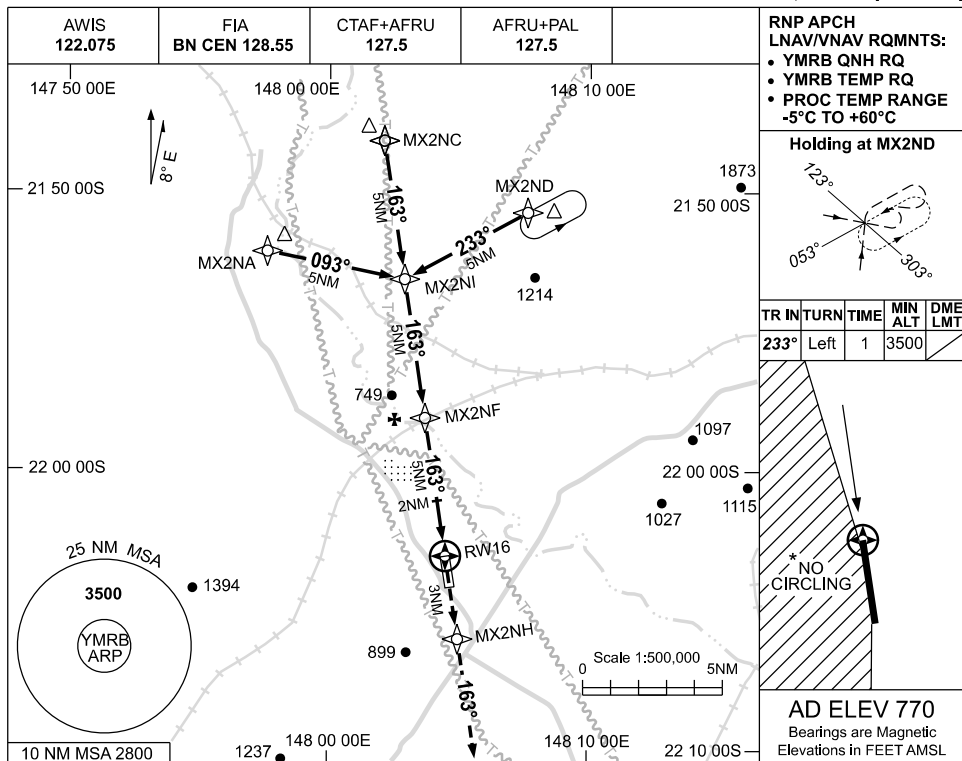
MRBAD01-177

USE QNH

RNP Z RWY 16

19 MAR 2026

MORANBAH, QLD (YMRB)



NOTES

CATEGORY	A	B	C	D
LNAV/VNAV		1060 (331-1.8)		NOT APPLICABLE
LNAV		1250 (521-2.9)		
CIRCLING	1580 (810-2.4)		1680 (910-4.0)	
ALTERNATE	(1310-4.4)		(1410-6.0)	

- MAX IAS: INITIAL : 210KT.
- BLASTING OPS WITHIN 5NM OF AD.
- *3. NO CIRLING WEST OF RWY 16 / 34.

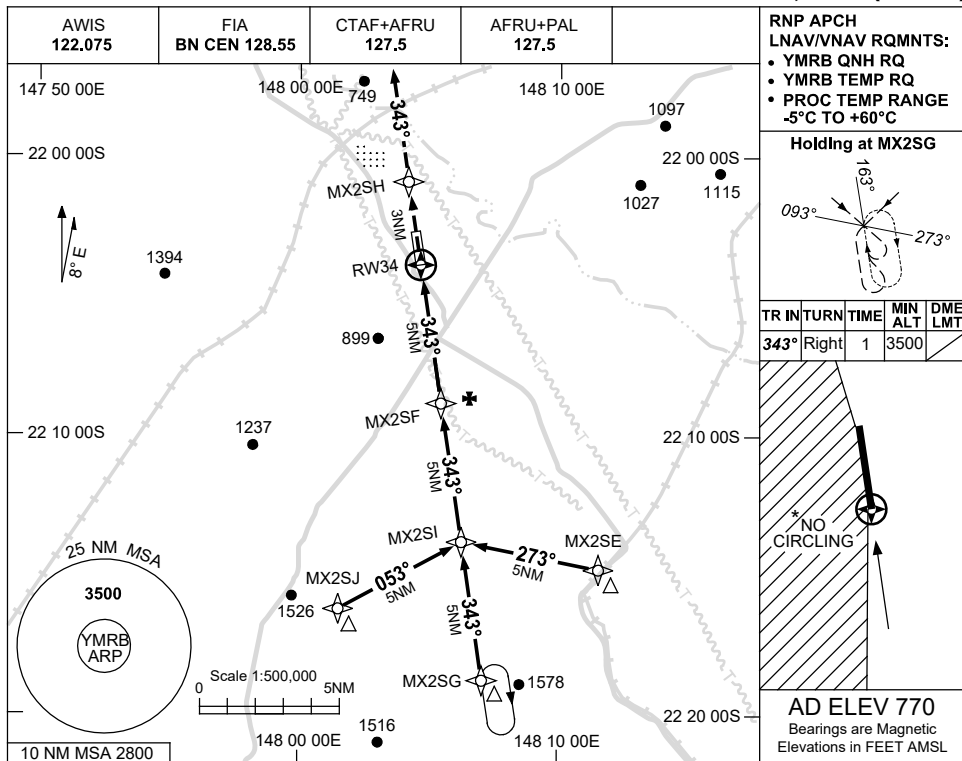
Changes: PROC SUFFIX.

MRBGN01-186

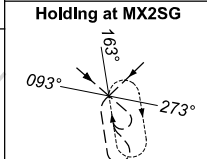
USE QNH

RNP RWY 34
MORANBAH, QLD (YMRB)

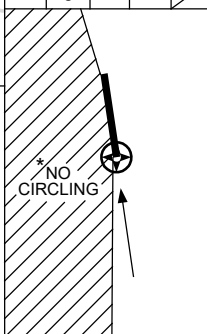
13 JUN 2024



RNP APCH
LNAV/VNAV RQMNTS:
• YMRB QNH RQ
• YMRB TEMP RQ
• PROC TEMP RANGE
-5°C TO +60°C

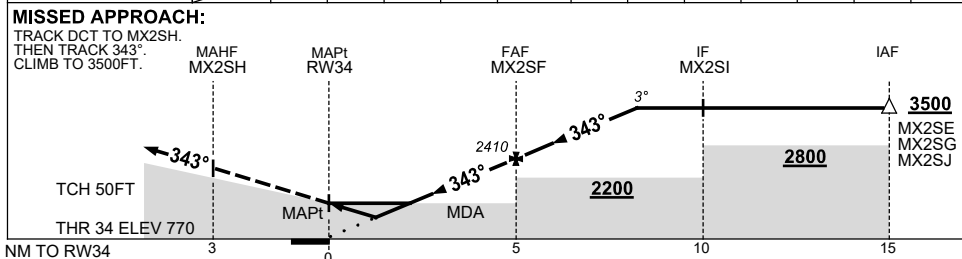


TR	IN	TURN	TIME	MIN ALT	DME LMT
343°	Right	1		3500	



AD ELEV 770
Bearings are Magnetic
Elevations in FEET AMSL

NM TO NEXT WPT	RW34	0.9	1.9	3	4	MX2SF	1	2	3	3.5		
ALT (3° APCH PATH)		1120	1440	1780	2090	2410	2730	3050	3370	3500		



NOTES

CATEGORY	A	B	C	D
LNAV/VNAV		1120 (350-2.0)		NOT APPLICABLE
LNAV		1440 (670-3.8)		
CIRCLING	1580 (810-2.4)		1680 (910-4.0)	
ALTERNATE		(1310-4.4)	(1410-6.0)	

- MAX IAS: INITIAL : 210KT.
- BLASTING OPS WITHIN 5NM OF AD.
- NO CIRLING WEST OF RWY 16/34.

Changes: NO CIRCLING, WPT NAMING CONVENTION, NOTE.

MRBG02-179

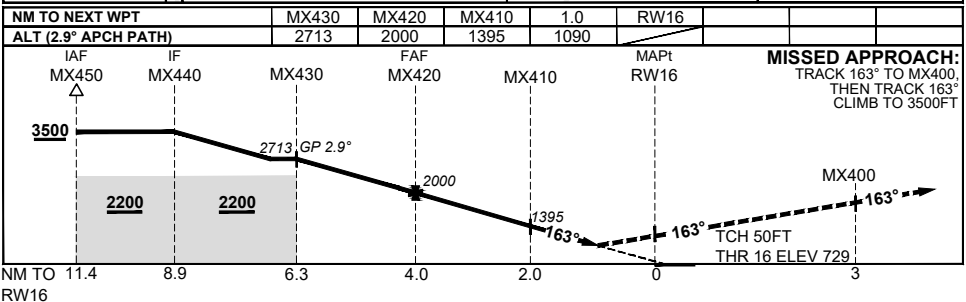
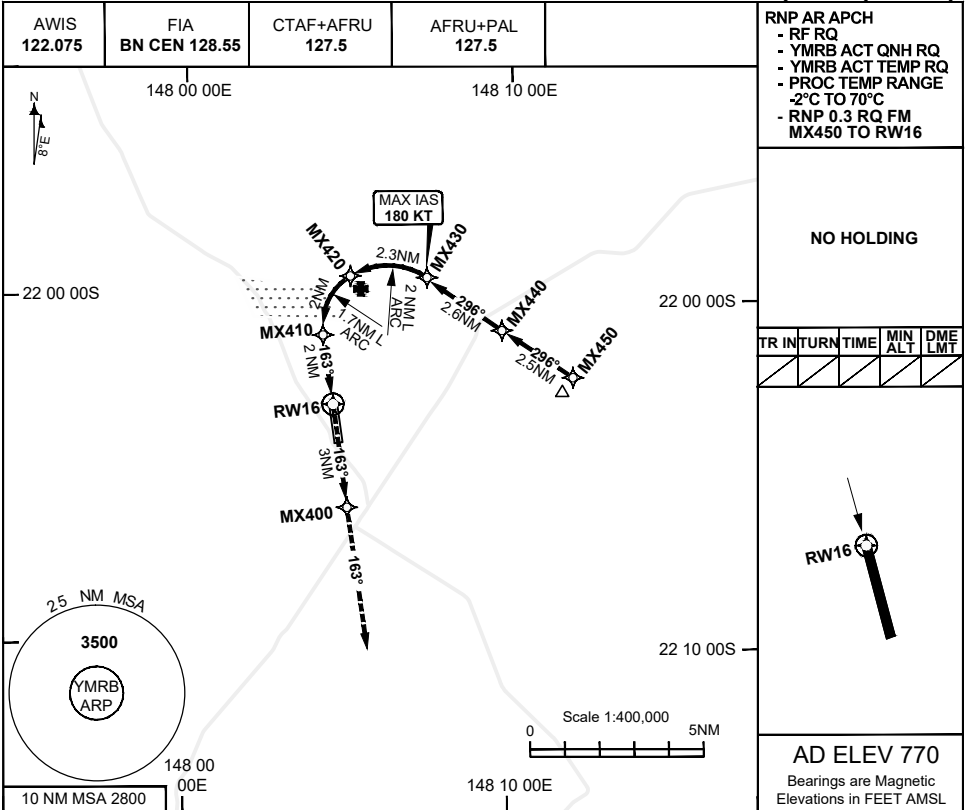
**FOR CASA APPROVED
OPERATORS ONLY**

RNP Y RWY 16 (AR)

19 MAR 2026

USE QNH

MORANBAH, QLD (YMRB)



CATEGORY	A / B	C	D
RNP (0.30)	NOT AUTHORIZED	DA(H) 1090 (361 - 2.1)	NOT AUTHORIZED
CIRCLING		NOT AUTHORIZED	
ALTERNATE			

NOTES

- BLASTING OPS WITHIN 5NM OF AD.

202510200155 General Electric Company Proprietary & Confidential Information

Changes: FROM SUP H146/25, Editorial

DO NOT USE FOR NAVIGATION

MRBGN03-186

Prepared by GE Aerospace - ICAO DOC 9905 Compliant

