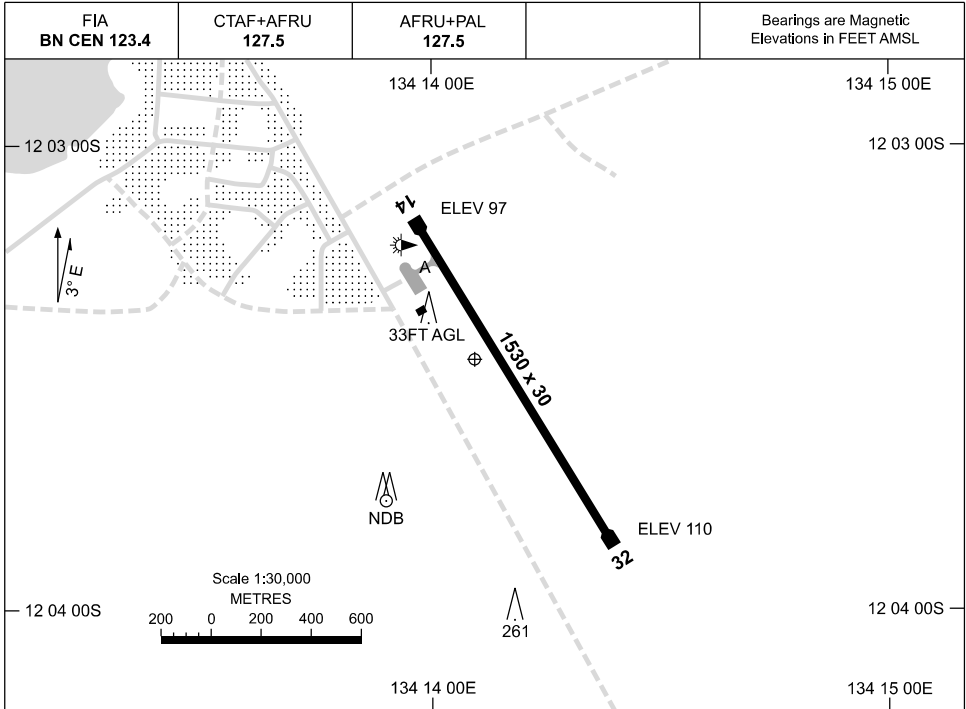


19 MAR 2026

AD ELEV 123  
12 03 22S 134 14 03E

**AERODROME CHART**  
**MANINGRIDA, NT (YMGD)**



	<b>AERODROME LIGHTING</b>
<b>RWY</b>	TAXIWAY : BLUE EDGE RL : AFRU+PAL 127.5
<b>14</b> <sup>146</sup> <sup>326</sup> <b>32</b>	LIRL LIRL

**NOTES**

1. AWIS (PHONE) 08 7922 2509

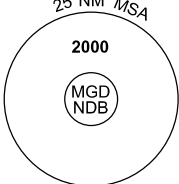
Changes: RWY BRG, Editorial.

MGDAD01-186

# GNSS ARRIVAL PROCEDURES MANINGRIDA, NT (YMGD)

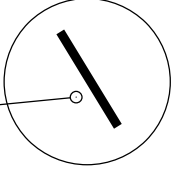
**19 MAR 2026**

FIA <b>BN CEN 123.4</b>	CTAF+AFRU <b>127.5</b>	AFRU+PAL <b>127.5</b>			Bearings are Magnetic Elevations in FEET AMSL
----------------------------	---------------------------	--------------------------	--	--	--



25 NM MSA  
2000  
MGD NDB

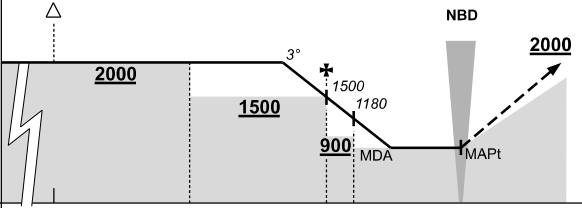
**REFERENCE WAYPOINT MGD NDB**  
AWIS (PHONE) 08 7922 2509



MGD NDB 401

10 NM MSA 1600

AD ELEV 123

<b>ALL ROUTES TO MGD NDB</b>											<p><b>MISSED APPROACH:</b> CLIMB ON TRACK TO 2000FT.</p>							
	NM TO MGD NDB	25	15	10	5	4	0											
<b>CIRCLING MINIMA</b>			A,B: 730-2.4		C: 830-4.0		D: N/A											
NM TO MGD NDB	6.6	6	5	4	3	2.9	2.6											
ALT (3° APCH PATH)	2000	1820	1500	1180	870	830	730											

Changes: 10NM MSA.

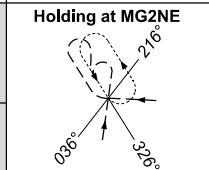
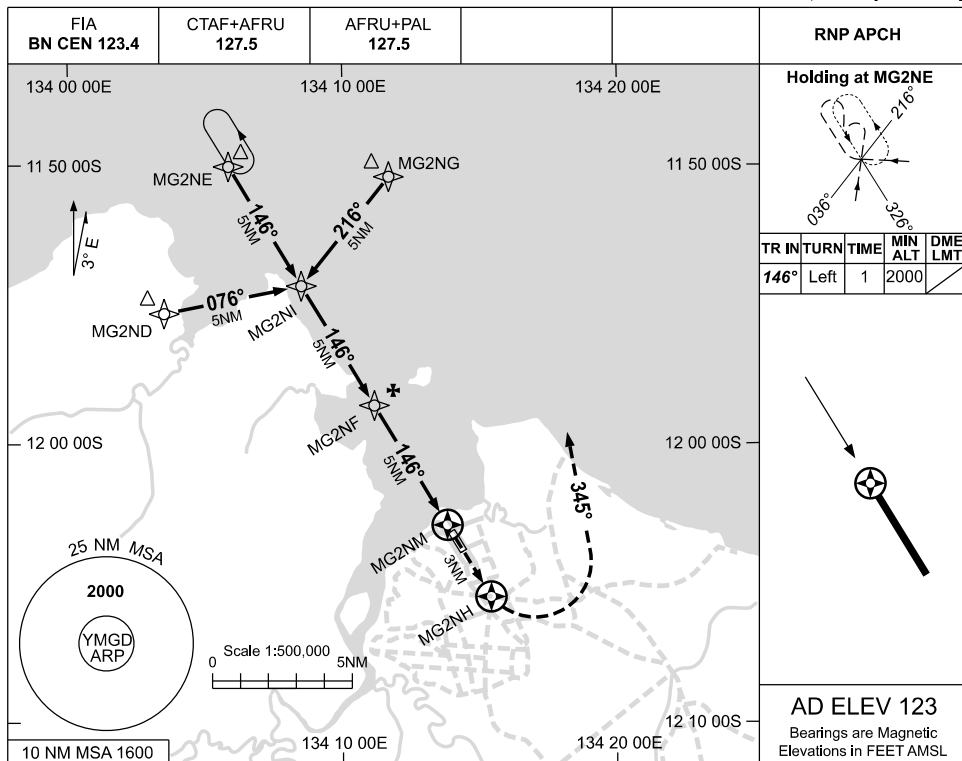


USE QNH

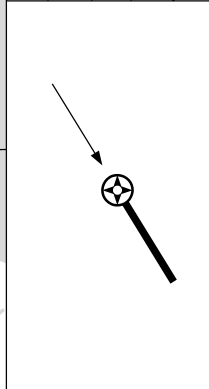
RNP RWY 14

MANINGRIDA, NT (YMGD)

19 MAR 2026

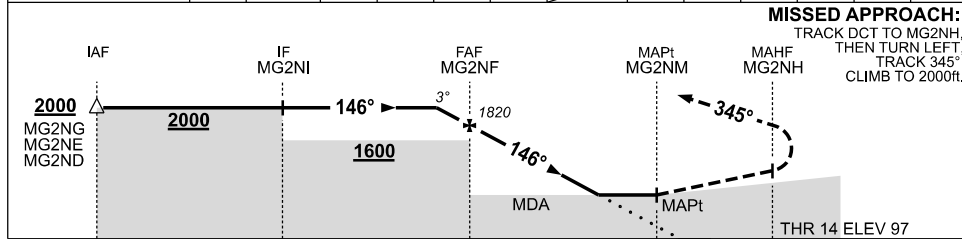


TR IN	TURN	TIME	MIN ALT	DME LMT
146°	Left	1	2000	



**AD ELEV 123**  
Bearings are Magnetic  
Elevations in FEET AMSL

NM TO NEXT WPT	0.5	MG2NF	4	3	2	1.2	MG2NM						
ALT (3° APCH PATH)	2000	1820	1510	1190	870	610							



**MISSED APPROACH:**  
TRACK DCT TO MG2NH,  
THEN TURN LEFT,  
TRACK 345°,  
CLIMB TO 2000ft.

**NOTES**

CATEGORY	A	B	C	D
LNAV	610 (513-2.9)			NOT APPLICABLE
CIRCLING	730 (607-2.4)		830 (707-4.0)	
ALTERNATE	(1107-4.4)		(1207-6.0)	

- MAX IAS:  
INITIAL : 210KT.
- AWIS (PHONE)  
08 7922 2509

Changes: 10NM MSA, MAG BRG, Editorial.

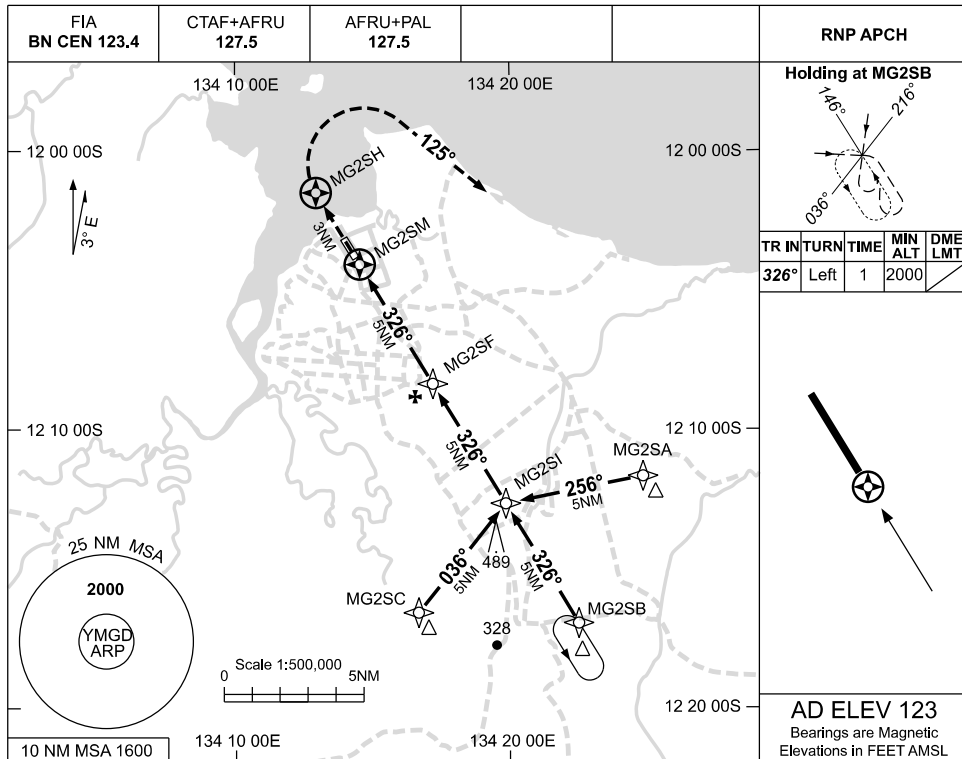
MGDGN01-186

USE QNH

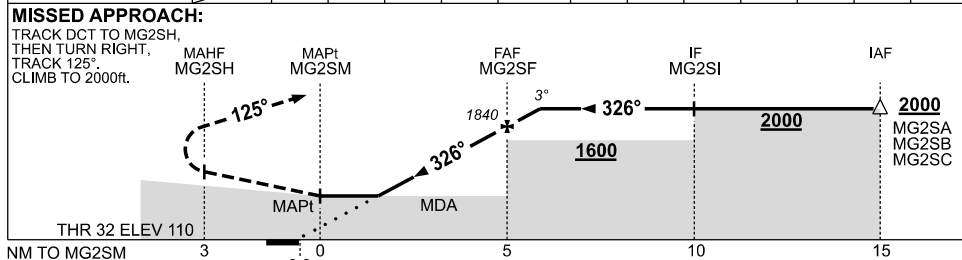
RNP RWY 32

19 MAR 2026

MANINGRIDA, NT (YMGD)



NM TO NEXT WPT	MG2SM	1.4	2	3	4	MG2SF	0.5					
ALT (3° APCH PATH)		680	880	1200	1520	1840	2000					



**NOTES**

CATEGORY	A	B	C	D
LNAV	680 (570-3.2)			NOT APPLICABLE
CIRCLING	730 (607-2.4)		830 (707-4.0)	
ALTERNATE	(1107-4.4)		(1207-6.0)	

- MAX IAS: INITIAL : 210KT.
- AWIS (PHONE) 08 7922 2509

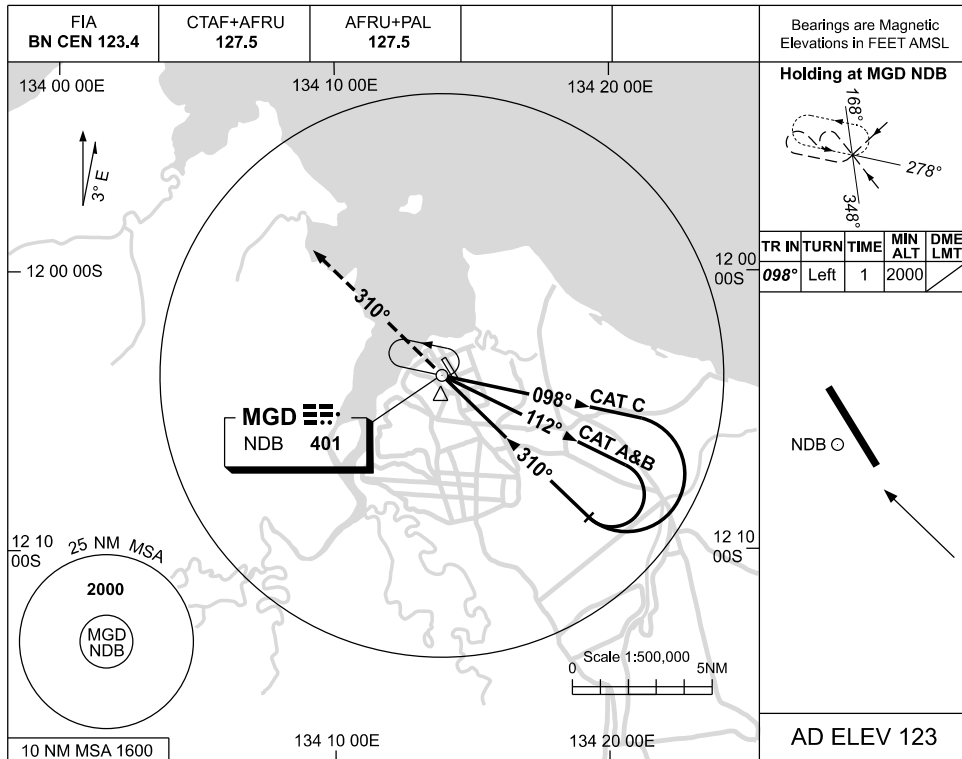
Changes: 10NM MSA, MAG BRG, Editorial.

MGDGN02-186

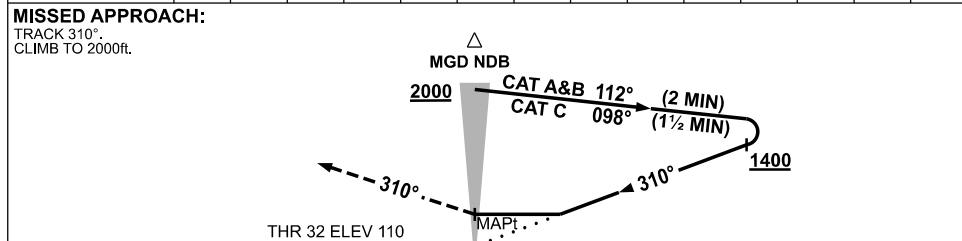
USE QNH

NDB RWY 32  
**MANINGRIDA, NT (YMGD)**

19 MAR 2026



DME DIST	NOT APPLICABLE									
ALT										



**NOTES**

CATEGORY	A	B	C	D
S-I NDB	<b>730</b> (620-3.5)			NOT APPLICABLE
CIRCLING	<b>730</b> (607-2.4)	<b>830</b> (707-4.0)		
ALTERNATE	(1107-4.4)		(1207-6.0)	

1. MAX IAS:  
INITIAL : 210KT.
2. AWIS (PHONE)  
08 7922 2509

Changes: 10NM MSA.

MGDNB01-186