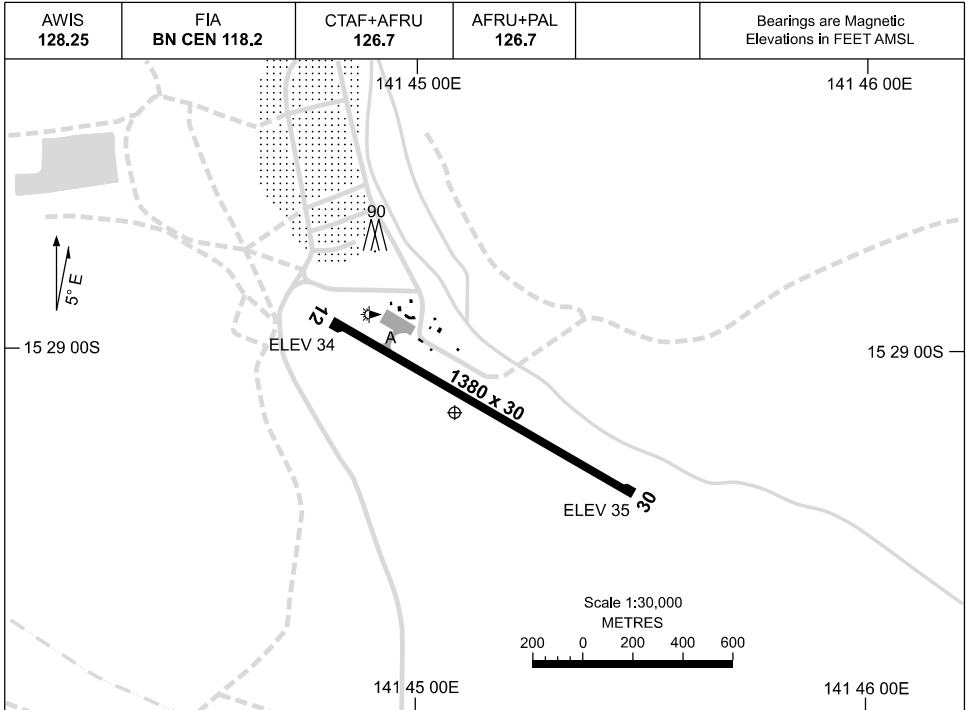


19 MAR 2026

AD ELEV 35  
15 29 08S 141 45 05E

AERODROME CHART  
**KOWANYAMA, QLD (YKOW)**



	<b>AERODROME LIGHTING</b>
<b>RWY</b>	TAXIWAY : BLUE EDGE RL : AFRU+PAL 126.7, SDBY (15 SEC)
<b>12</b> <sup>114</sup> 294 <b>30</b>	LIRL LIRL

**NOTES**

1. FIA FREQ 118.2 AVBL 9,500FT.

Changes: TWY A ADDED, Editorial.

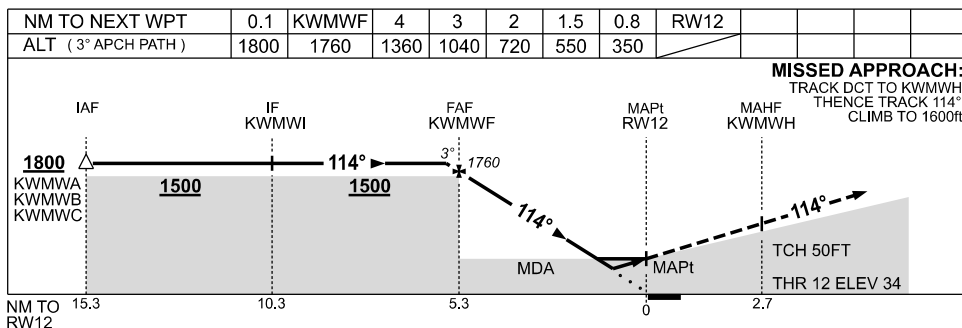
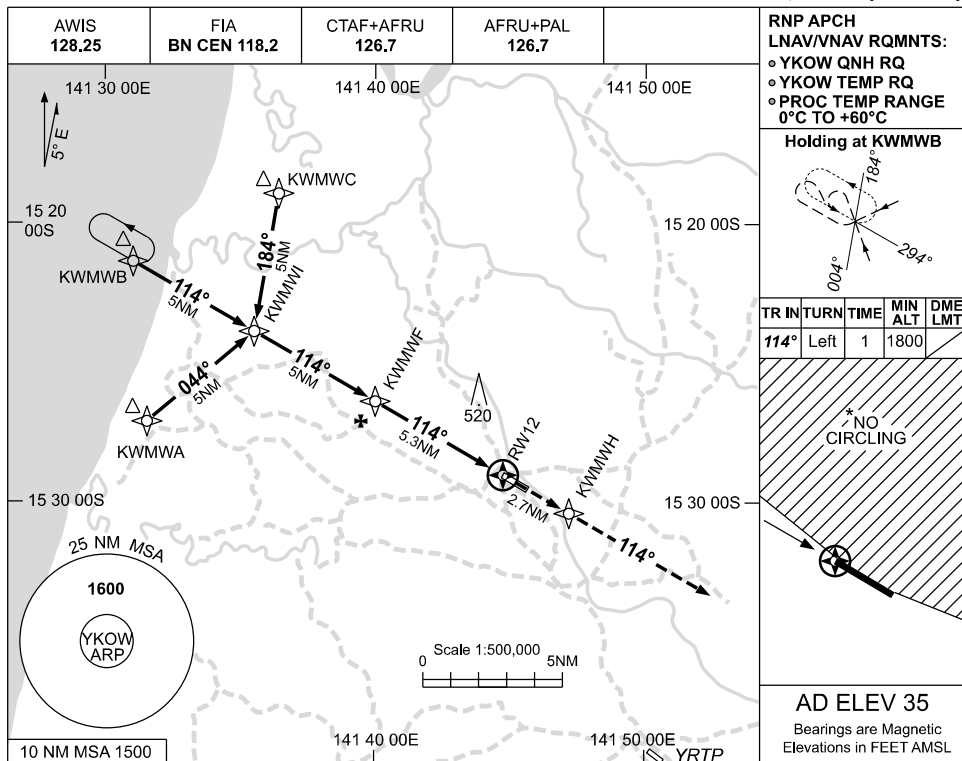
KOWAD01-186

USE QNH

RNP RWY 12

04 SEP 2025

KOWANYAMA, QLD (YKOW)



**MISSED APPROACH:**  
 TRACK DCT TO KWMWH,  
 THENCE TRACK 114°,  
 CLIMB TO 1600ft.

**NOTES**

- 1. MAX IAS:  
INITIAL : 210KT.
- \* 2. NO CIRCLING NORTH  
OF RWY 12 & RWY 30.

CATEGORY	A	B	C	D
LNAV/VNAV	350 (316-1.8)			NOT APPLICABLE
LNAV	550 (515-2.9)			
CIRCLING*	630 (595-2.4)	730 (695-4.0)		
ALTERNATE	(1095-4.4)		(1195-6.0)	

Changes: UNICOM DELETED.

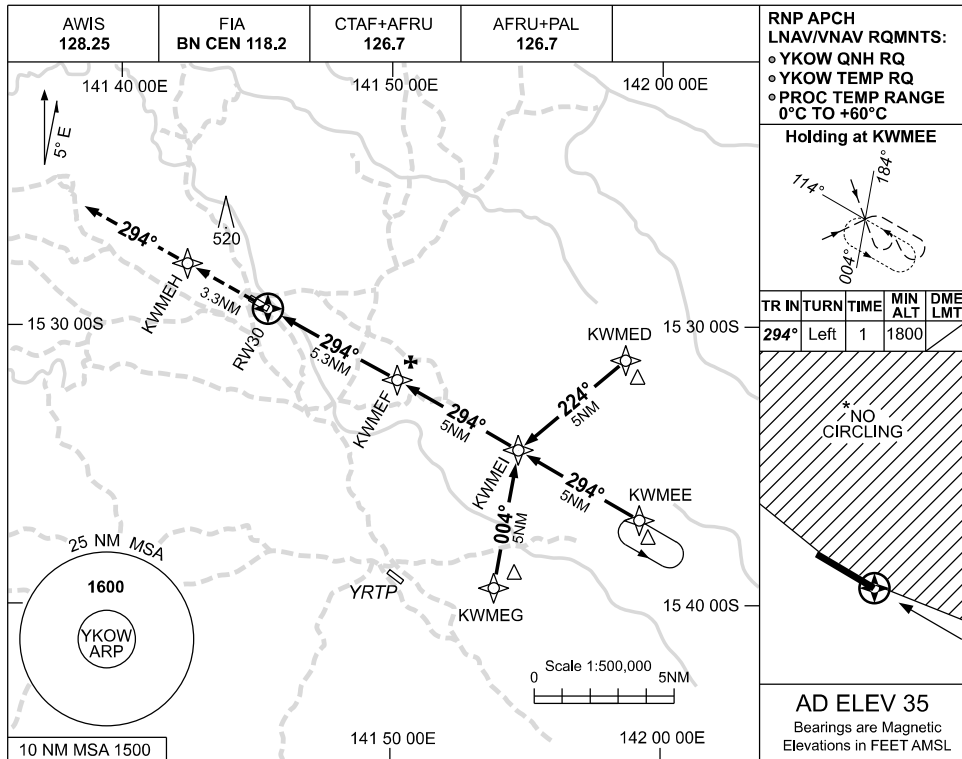
KOWGN01-184

USE QNH

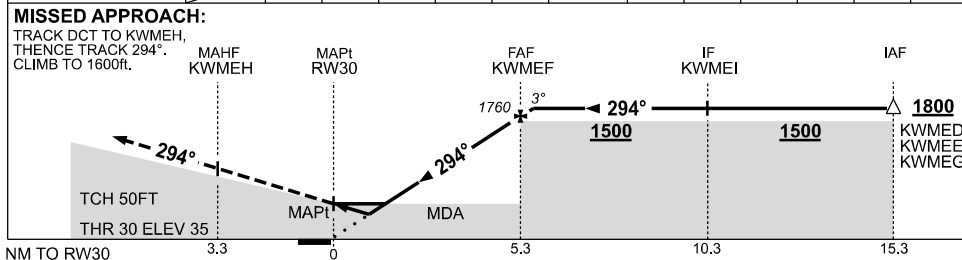
RNP RWY 30

04 SEP 2025

KOWANYAMA, QLD (YKOW)



NM TO NEXT WPT	RW30	0.8	1.5	2	3	4	KWMEF	0.1					
ALT (3° APCH PATH)		350	550	720	1040	1360	1760	1800					



**NOTES**

CATEGORY	A	B	C	D
LNAV/VNAV	350 (315-1.8)			<b>NOT APPLICABLE</b>
LNAV	550 (515-2.9)			
CIRCLING *	630 (595-2.4)		730 (695-4.0)	
ALTERNATE	(1095-4.4)		(1195-6.0)	

1. MAX IAS: INITIAL : 210KT.
- \* 2. NO CIRCLING NORTH OF RWY 12 & RWY 30.

Changes: UNICOM DELETED.

KOWGN02-184