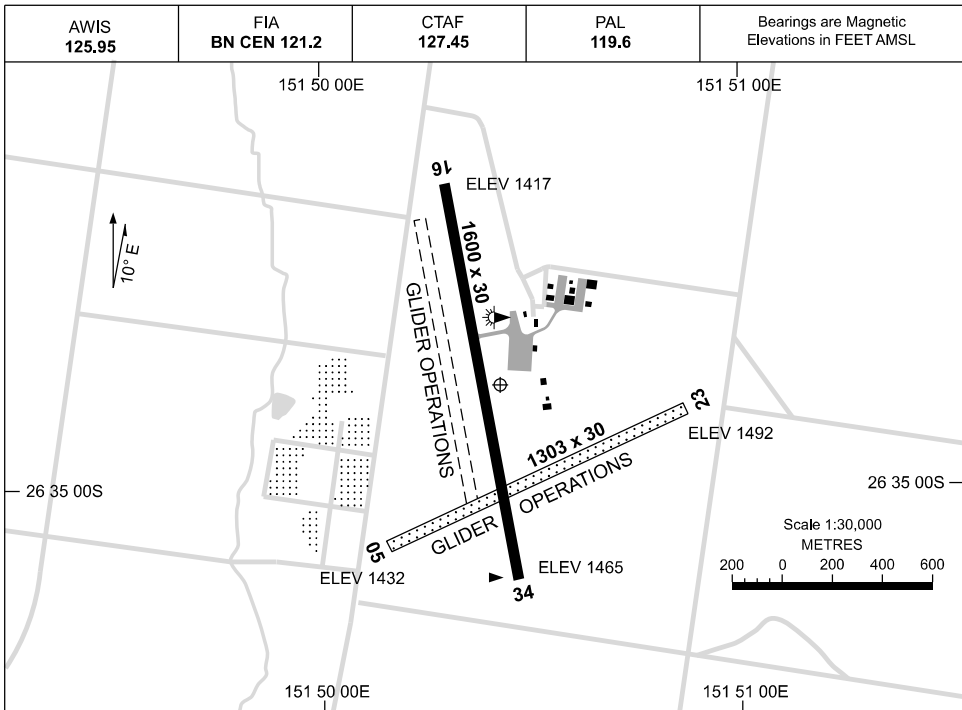


27 NOV 2025

AD ELEV 1492  
26 34 51S 151 50 28E

AERODROME CHART  
**KINGAROY, QLD (YKRY)**



	<b>AERODROME LIGHTING</b>	
<b>RWY</b>	TAXIWAY: BLUE EDGE RL : PAL 119.6, PTBL EMERG ONLY, SDBY (PN)	
<b>16</b> <sup>159</sup> 339 <b>34</b>	LIRL	
<b>05</b> <sup>055</sup> 235 <b>23</b>	NIL	

**NOTES**

1. PAL REQUIRES THREE TIMES ONE SECOND PULSES WI A 14-SEC PERIOD.
2. SDBY PWR SUPPLIED BY GENERATOR.

Changes: NOTE 2, Editorial.

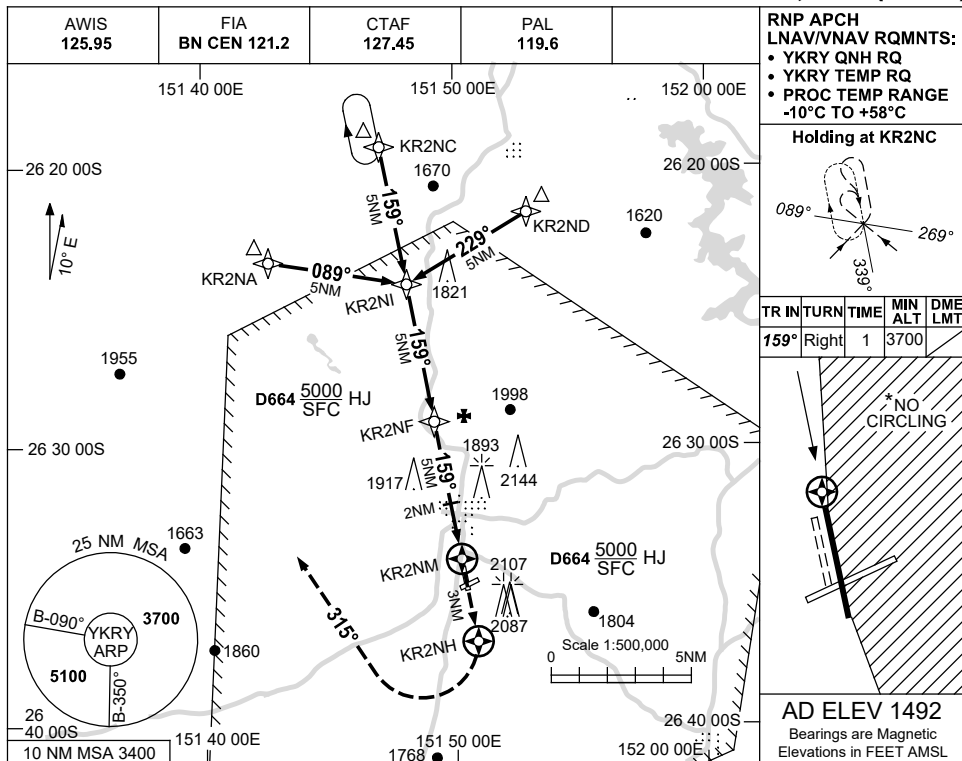
KRYAD01-185

USE QNH

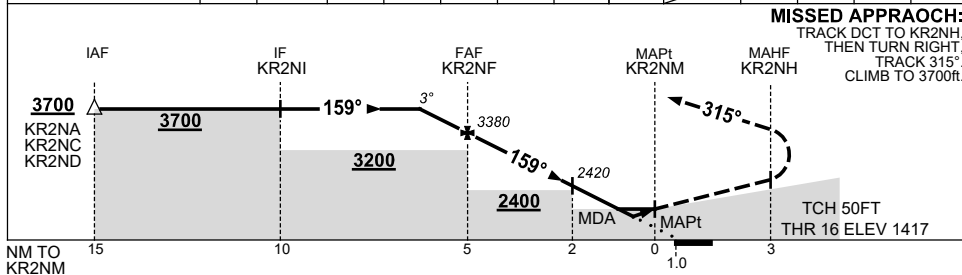
RNP RWY 16

**KINGAROY, QLD (YKRY)**

13 JUN 2024



NM TO NEXT WPT	1	KR2NF	4	3	2	1	0.9	0.6	KR2NM				
ALT (3° APCH PATH)		3700	3380	3060	2740	2420	2100	2060	1980				



**NOTES**

CATEGORY	A	B	C	D
LNAV/VNAV		1980 (563-3.2)		NOT APPLICABLE
LNAV		2060 (643-3.7)		
CIRCLING*	2260 (768-2.4)		2530 (1038-4.0)	
ALTERNATE	(1248-4.4)		(1538-6.0)	

- MAX IAS: INITIAL : 210KT.
- NO CIRCLING IN SECTOR EAST OF RWY 16/34.

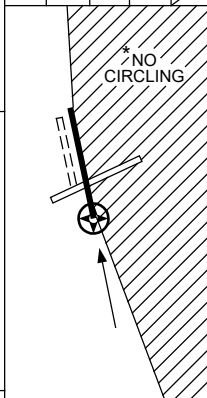
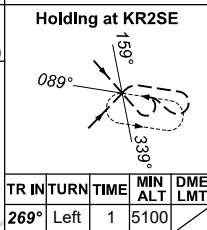
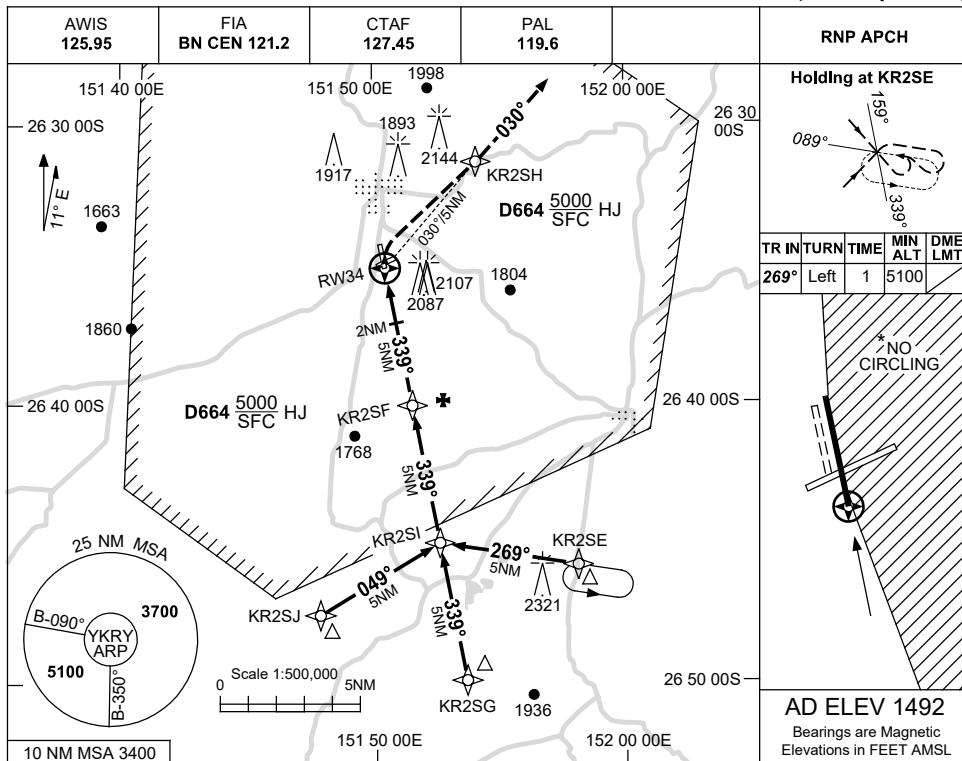
Changes: 2107FT OBST, CIRCLING & ALTN MINIMA, WPT NAMING CONVENTION, MNM ALT.

KRYGN01-179

USE QNH

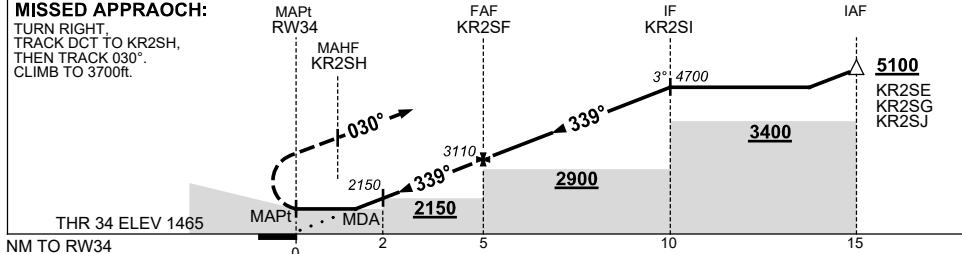
RNP RWY 34  
KINGAROY, QLD (YKRY)

13 JUN 2024



**AD ELEV 1492**  
Bearings are Magnetic  
Elevations in FEET AMSL

NM TO NEXT WPT	RW34	1.9	2	3	4	KR2SF	1	2	3	4	KR2SI		
ALT (3° APCH PATH)		2110	2150	2470	2790	3110	3430	3740	4060	4380	4700		



**NOTES**

CATEGORY	A	B	C	D
LNAV	2110 (645-3.7)			NOT APPLICABLE
CIRCLING*	2260 (768-2.4)	2530 (1038-4.0)		
ALTERNATE	(1248-4.4)		(1538-6.0)	

- MAX IAS: INITIAL : 210KT.
- NO CIRCLING IN SECTOR EAST OF RWY 16/34.

Changes: 2107FT OBST, CIRCLING & ALTN MINIMA, WPT NAMING CONVENTION, Editorial.

KRYGN02-179