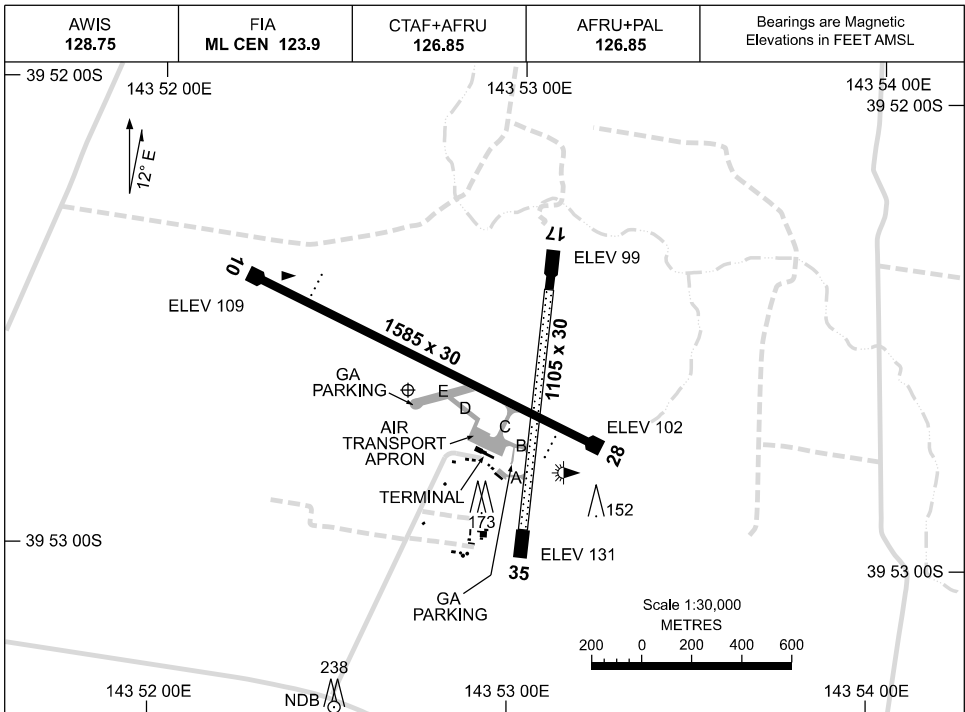


04 SEP 2025

AD ELEV 132  
39 52 39S 143 52 42E

**AERODROME CHART**  
**KING ISLAND, TAS (YKII)**



RWY	AERODROME LIGHTING	
		TAXIWAY : BLUE EDGE ON TWY C AND RWY 10/28 TURN PADS RL : AFRU+PAL 126.85 , SDBY (15 SEC)
<b>10</b> <sup>103</sup>	PAPI 3.0° 41FT LIRL	
<sup>283</sup> <b>28</b>	PAPI 3.0° 41FT LIRL	
<b>17</b> <sup>172</sup>	NIL	
<sup>352</sup> <b>35</b>	NIL	

**NOTES**

- VHF TRANSMISSIONS FROM TAX ACFT MAY BE SUBJECT TO GROUND SHIELDING.
- AWIS RQ ONE ONE-SEC PULSE TO ACTIVATE.

Changes: PTBL LIGHTING REMOVED, Editorial.

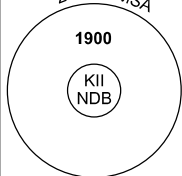
KIAD01-184

# GNSS ARRIVAL PROCEDURES KING ISLAND, TAS (YKII)

19 MAR 2026

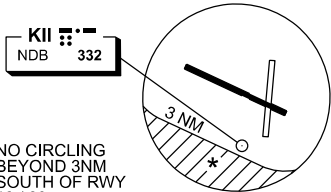
AWIS 128.75	FIA ML CEN 123.9	CTAF+AFRU 126.85	AFRU+PAL 126.85		Bearings are Magnetic. Elevations in FEET AMSL
----------------	---------------------	---------------------	--------------------	--	---

25 NM MSA



10 NM MSA 1900

**REFERENCE WAYPOINT KII NDB**

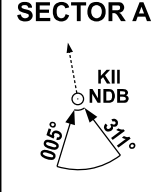


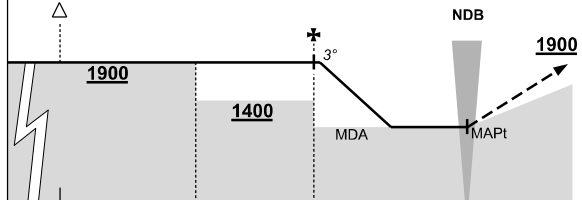
**KII NDB 332**

\* NO CIRCLING BEYOND 3NM SOUTH OF RWY 10 / 28.

**AD ELEV 132**

**SECTOR A**

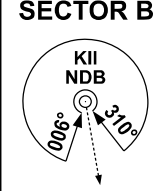


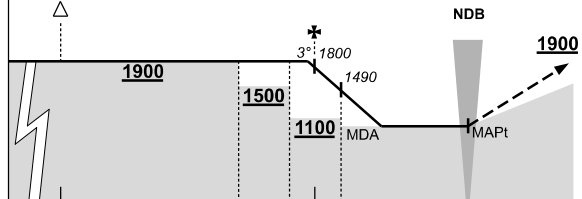


NM TO KII NDB	25	16	10	6	0												
<b>CIRCLING MINIMA</b>					<b>A,B: 1140-2.4</b>	<b>C: 1140-4.0</b>	<b>D: N/A</b>										
NM TO KII NDB	5.9	5	4	3.5													
ALT (3° APCH PATH)	1900	1620	1300	1140													

**MISSED APPROACH:**  
CLIMB ON TRACK TO 1900ft.

**SECTOR B**





NM TO KII NDB	25	16	9	7	6	5	0										
<b>CIRCLING MINIMA</b>					<b>A,B: 980-2.4</b>	<b>C: 980-4.0</b>	<b>D: N/A</b>										
NM TO KII NDB	6.3	5	4	3.4													
ALT (3° APCH PATH)	1900	1490	1170	980													

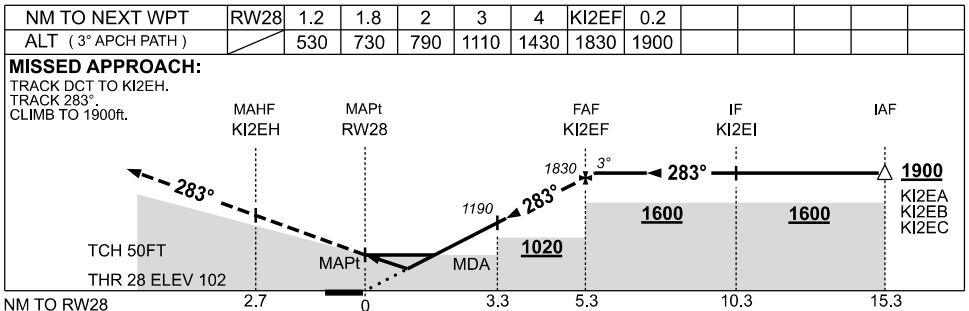
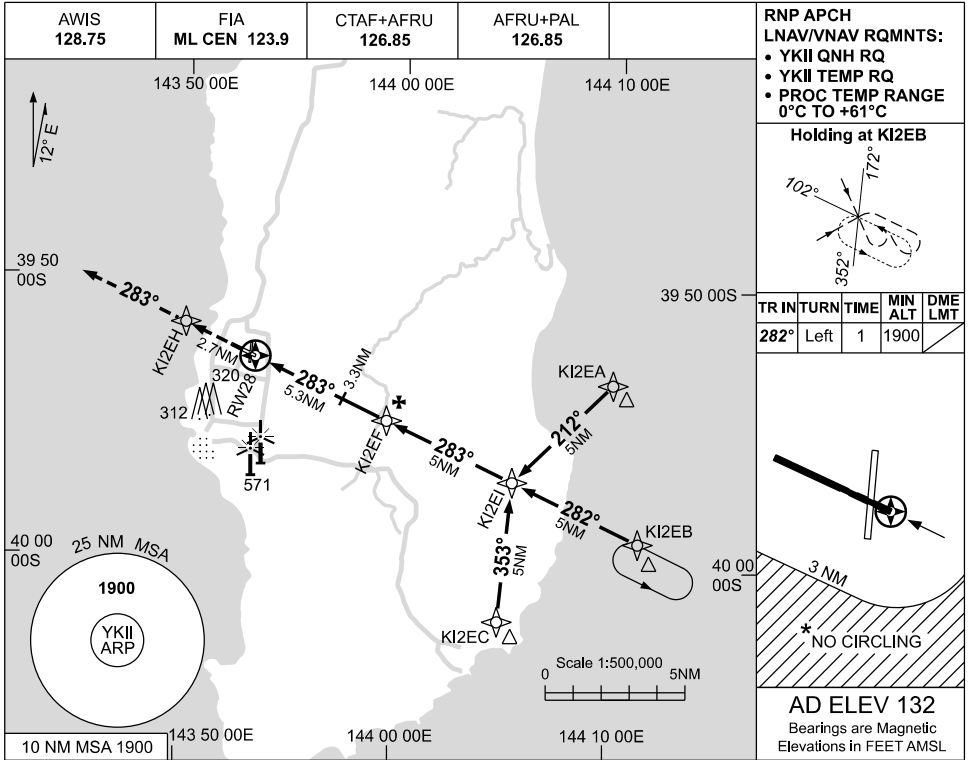
**MISSED APPROACH:**  
CLIMB ON TRACK TO 1900ft.

USE QNH

RNP RWY 28

19 MAR 2026

KING ISLAND, TAS (YKII)



**NOTES**

CATEGORY	A	B	C	D
LNAV/VNAV	530 (428-2.4)			NOT APPLICABLE
LNAV	730 (628-3.6)			
CIRCLING *	840 (708-2.4)		940 (808-4.0)	
ALTERNATE	(1208-4.4)		(1308-6.0)	

1. MAX IAS: INITIAL : 210KT
- \* 2. NO CIRCLING BEYOND 3NM SOUTH OF RWY 10 / 28.

Changes: WPT NAMING CONVENTION, Editorial.

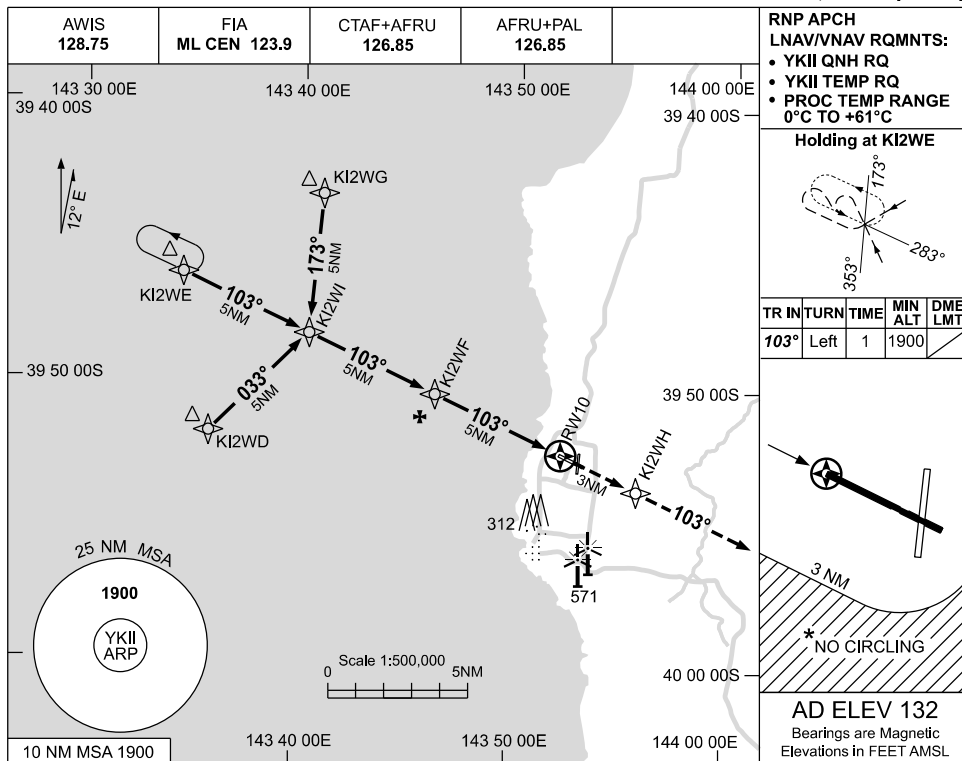
KIIGN01-186

USE QNH

RNP RWY 10

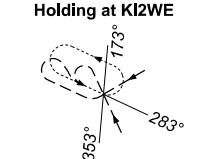
**KING ISLAND, TAS (YKII)**

19 MAR 2026

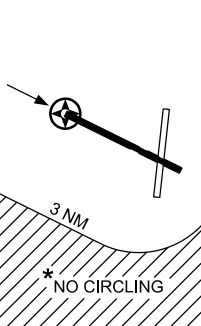


**RNP APCH  
LNAV/VNAV RQMNTS:**

- YKII QNH RQ
- YKII TEMP RQ
- PROC TEMP RANGE 0°C TO +61°C

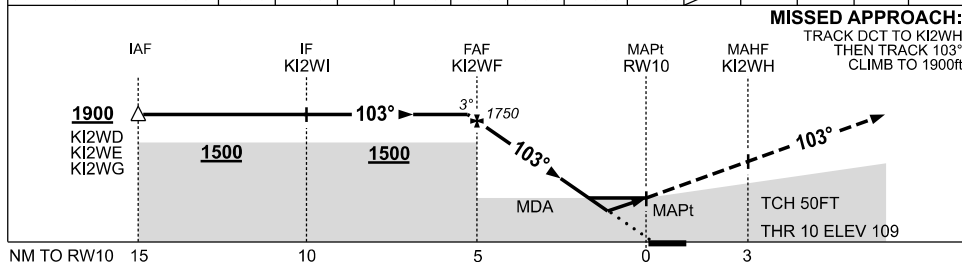


TR IN	TURN	TIME	MIN ALT	DME LMT
103°	Left	1	1900	



**AD ELEV 132**  
Bearings are Magnetic  
Elevations in FEET AMSL

NM TO NEXT WPT	0.5	KI2WF	4	3	2	1.6	1	0.9	RW10				
ALT (3° APCH PATH)	1900	1750	1430	1110	790	660	480	440					



**MISSED APPROACH:**  
TRACK DCT TO KI2WH,  
THEN TRACK 103°,  
CLIMB TO 1900ft.

**NOTES**

CATEGORY	A	B	C	D
LNAV/VNAV	440 (331-1.8)			NOT APPLICABLE
LNAV	660 (551-3.1)			
CIRCLING *	840 (708-2.4)		940 (808-4.0)	
ALTERNATE	(1208-4.4)		(1308-6.0)	

1. MAX IAS:  
INITIAL : 210KT.
- \* 2. NO CIRCLING  
BEYOND 3NM  
SOUTH OF  
RWY 10 / 28.

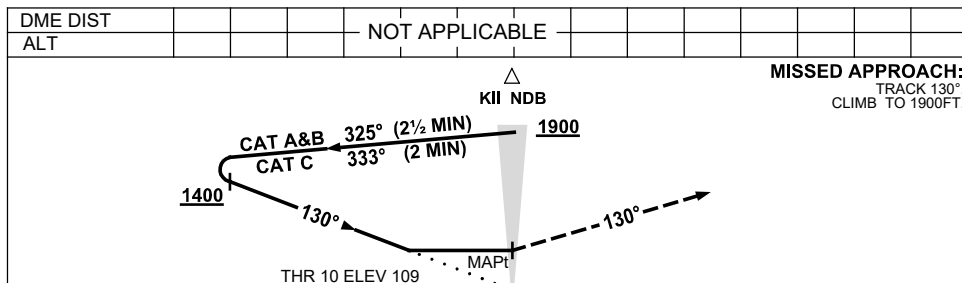
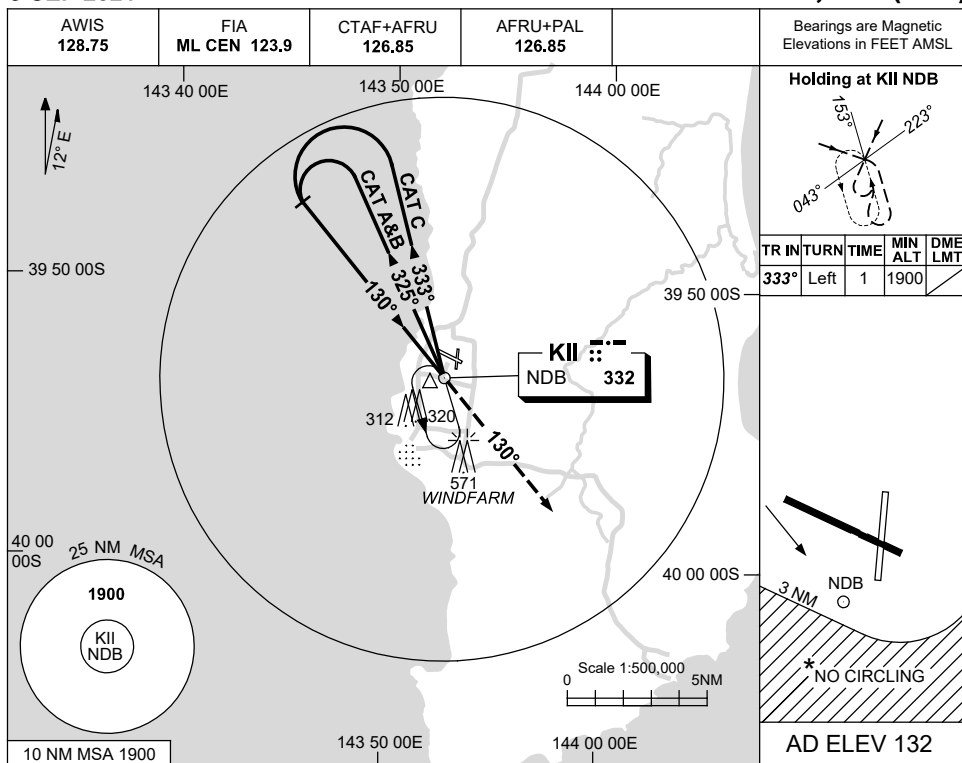
Changes: WPT NAMING CONVENTION, Editorial.

KIIGN02-186

USE QNH

NDB RWY 10  
KING ISLAND, TAS (YKII)

9 SEP 2021



**NOTES**

CATEGORY	A	B	C	D
S-I NDB	710 (601-3.4)		CIRCLING ONLY	NOT APPLICABLE
CIRCLING*	840 (708-2.4)			
ALTERNATE	(1208-4.4)		940 (808-4.0) (1308-6.0)	

1. MAX IAS: INITIAL : 210KT.
- \* 2. NO CIRCLING BEYOND 3NM SOUTH OF RWY 10/28.

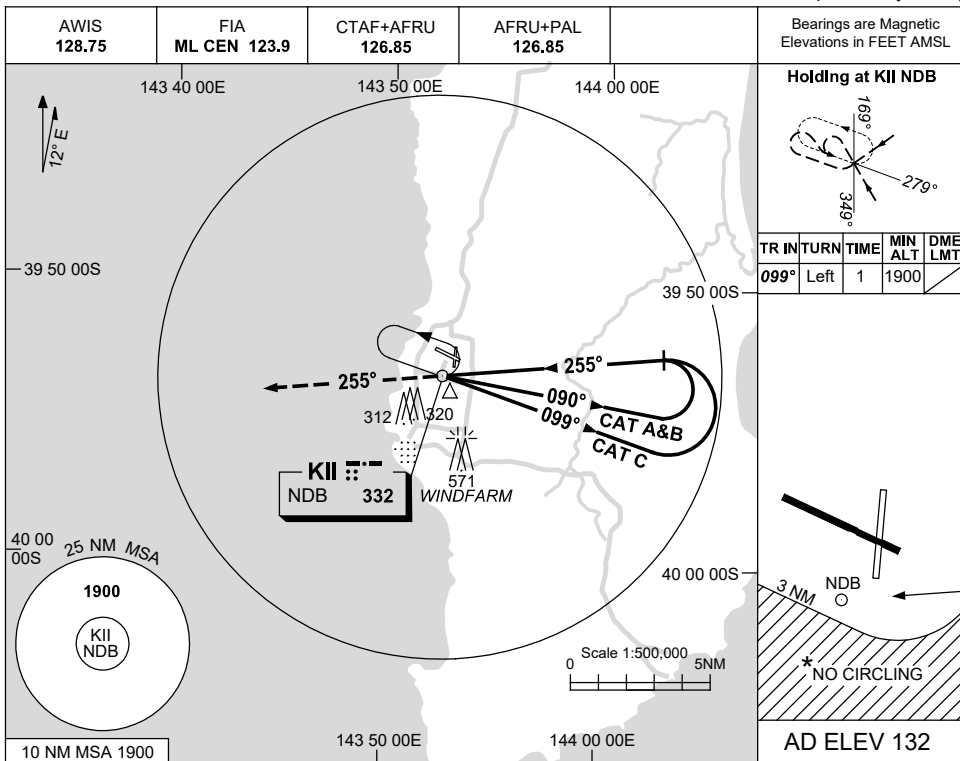
Changes: MSA, HOLDING ALT, IAF ALT, MISSED APCH ALT, COORD FORMAT, THR ELEV, Editorial.

KIINB01-168

USE QNH

NDB RWY 28  
KING ISLAND, TAS (YKII)

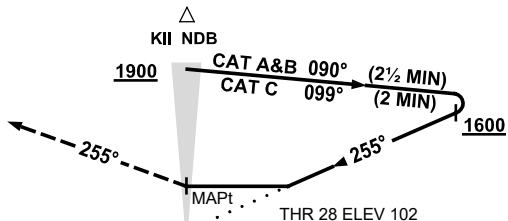
9 SEP 2021



DME DIST	NOT APPLICABLE									
ALT										

**MISSSED APPROACH:**

TRACK 255°  
CLIMB TO 1900FT.



**NOTES**

CATEGORY	A	B	C	D
S-I NDB	<b>840</b> (738-4.2)		CIRCLING ONLY	NOT APPLICABLE
CIRCLING *	<b>840</b> (708-2.4)			
ALTERNATE	(1208-4.4)		<b>940</b> (808-4.0) (1308-6.0)	

1. MAX IAS:  
INITIAL : 210KT.
- \* 2. NO CIRCLING  
BEYOND 3NM  
SOUTH OF RWY  
10/28.

Changes: MSA, HOLDING ALT, IAF ALT, MISSED APCH ALT, COORD FORMAT, THR ELEV, Editorial.

KIINB02-168