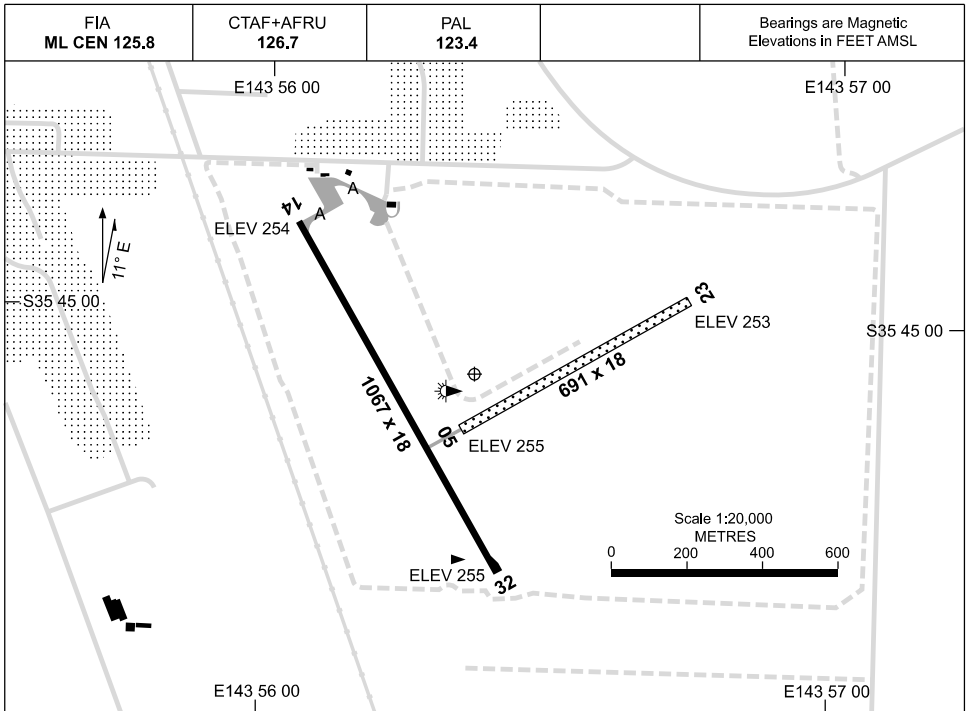


19 MAR 2026

AD ELEV 255  
S35 45 05 E143 56 22

AERODROME CHART  
**KERANG, VIC (YKER)**



	<b>AERODROME LIGHTING</b>	
<b>RWY</b>	TAXIWAY : BLUE EDGE ON TWY A RL : PAL 123.4, SDBY (30 SEC)	
<b>14</b> <sup>139</sup>	LIRL	
<sup>319</sup> <b>32</b>	LIRL	
<b>05</b> <sup>049</sup>	NIL	
<sup>229</sup> <b>23</b>	NIL	

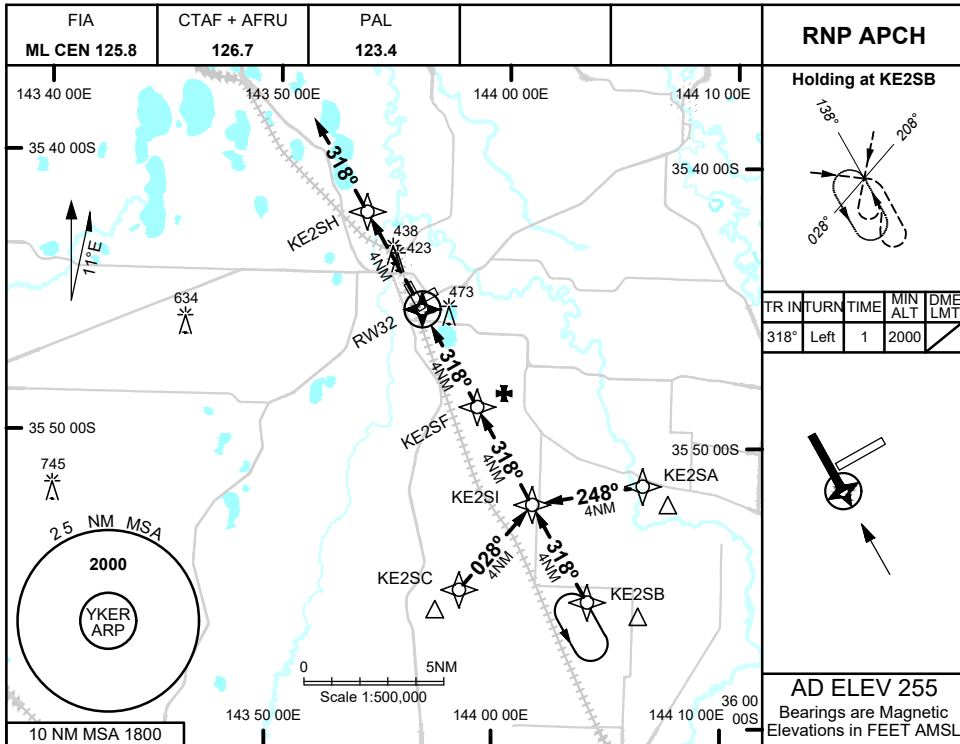
**NOTES**

1. FIA FREQ 125.8 AVBL 2000ft.

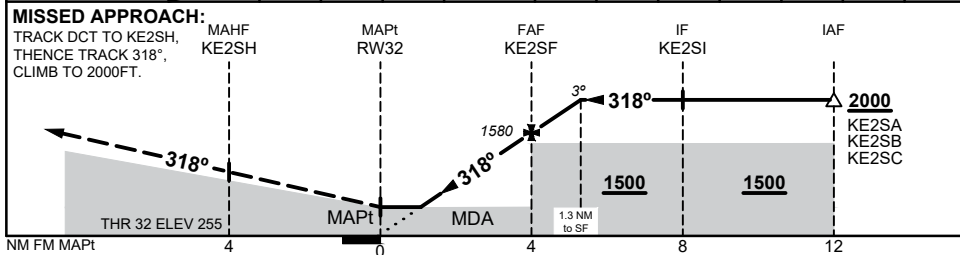
Changes: TWY LIGHT, Editorial.

KERAD01-186

27 NOV 2025



NM TO NEXT WPT	RW32	1.5	2	3	KE2SF	1	1.3				
ALT (3° APCH PATH)		780	940	1260	1580	1900	2000				

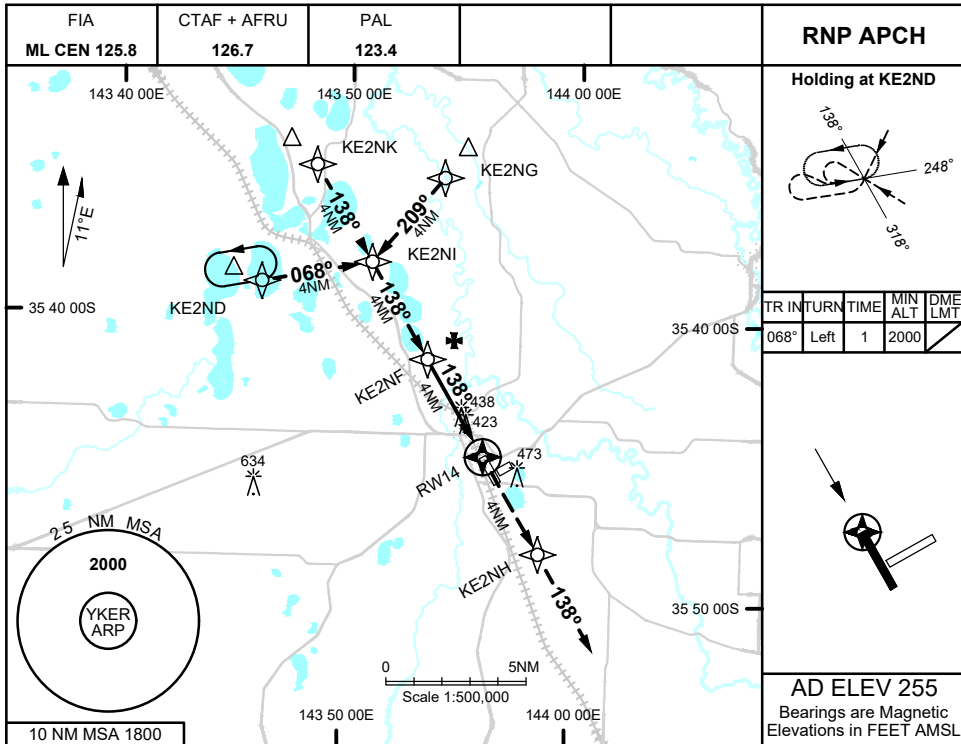


CATEGORY	A	B	C	D
LNAV	<b>780</b> (525 - 3.0)		NOT APPLICABLE	
CIRCLING	<b>870</b> (615 - 2.4)			
ALTERNATE	(1115 - 4.4)			

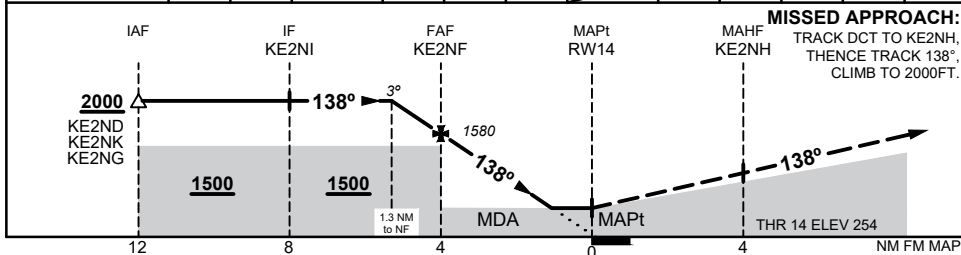
Changes: VAR

KERGN01-185

27 NOV 2025



NM TO NEXT WPT	1.3	1	KE2NF	3	2	1.5	RW14				
ALT (3° APCH PATH)	2000	1900	1580	1260	940	790					



CATEGORY	A	B	C	D
LNAV	790 (535 - 3.0)		NOT APPLICABLE	
CIRCLING	870 (615 - 2.4)			
ALTERNATE	(1115 - 4.4)			

Changes: VAR

KERGN02-185