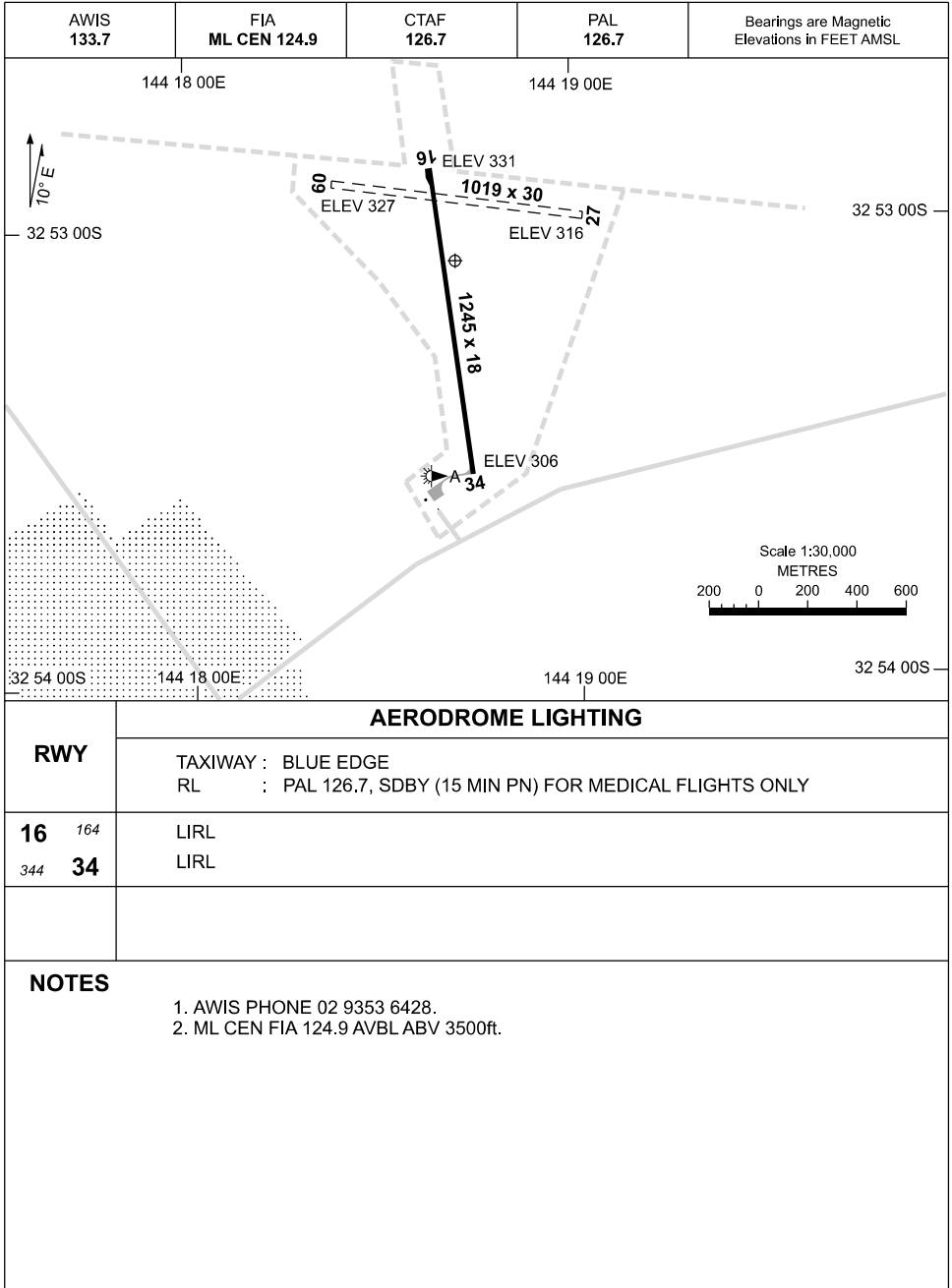


19 MAR 2026

AD ELEV 332  
32 53 05S 144 18 42E

AERODROME CHART  
**IVANHOE, NSW (YIVO)**



**AERODROME LIGHTING**

**RWY**

TAXIWAY : BLUE EDGE  
RL : PAL 126.7, SDBY (15 MIN PN) FOR MEDICAL FLIGHTS ONLY

**16** <sup>164</sup>  
<sup>344</sup> **34**

LIRL  
LIRL

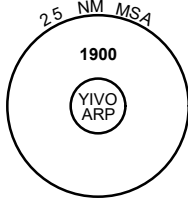
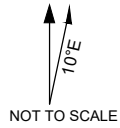
**NOTES**

1. AWIS PHONE 02 9353 6428.
2. ML CEN FIA 124.9 AVBL ABV 3500ft.

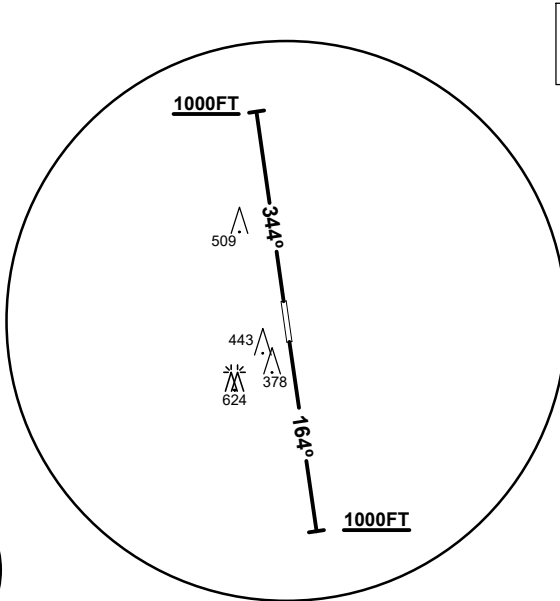
**STANDARD INSTRUMENT DEPARTURE**  
**IVANHOE ONE DEPARTURE**  
**IVANHOE, NSW (YIVO)**

13 JUN 2024

AWIS 133.7	FIA ML CEN 124.9	CTAF 126.7	PAL 126.7	BRG are MAG ELEV in FEET AMSL
---------------	---------------------	---------------	--------------	----------------------------------



10 NM MSA 1700



**SPEED**  
**MAX IAS 250KT**  
**BELOW 10,000FT**

**GRAD: 3.3%**

**IVANHOE ONE DEPARTURE**

**RWY 16**

- Track 164°
- At or above 1000FT turn as required
- Continue climb to 1900FT
- Intercept flight plan route

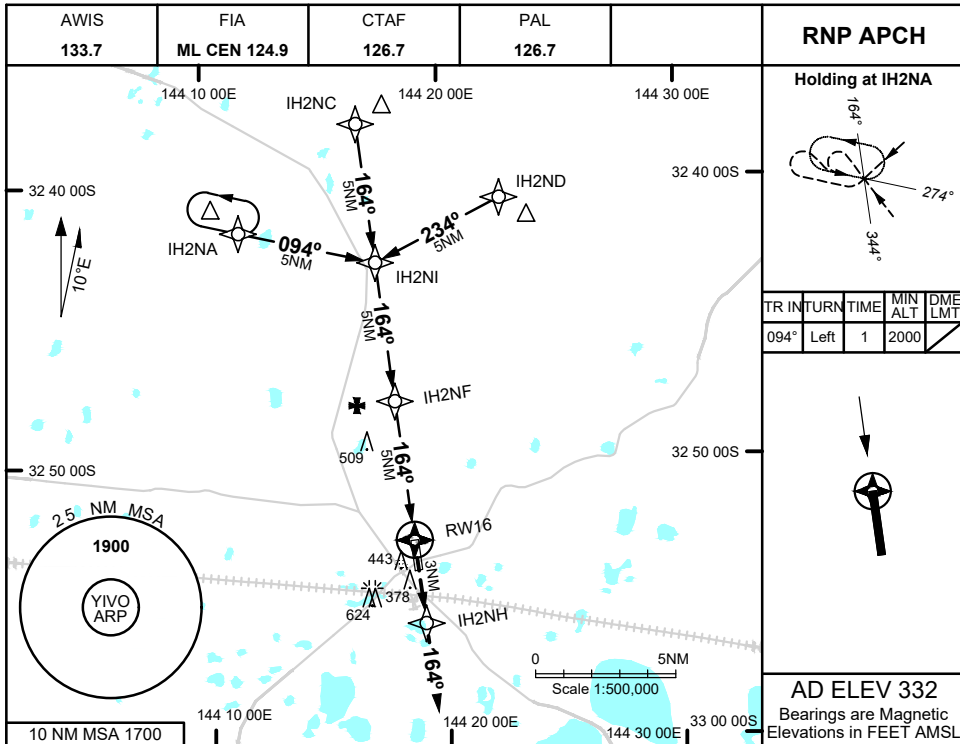
**RWY 34**

- Track 344°
- At or above 1000FT turn as required
- Continue climb to 1900FT
- Intercept flight plan route

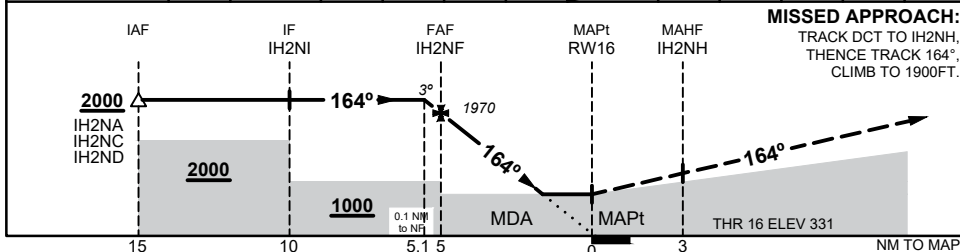
**NOTES**

- NIL -

23 MAR 2023



NM TO NEXT WPT	0.1	IH2NF	4	3	2	1.4	RW16				
ALT (3° APCH PATH)	2000	1970	1650	1340	1020	840					



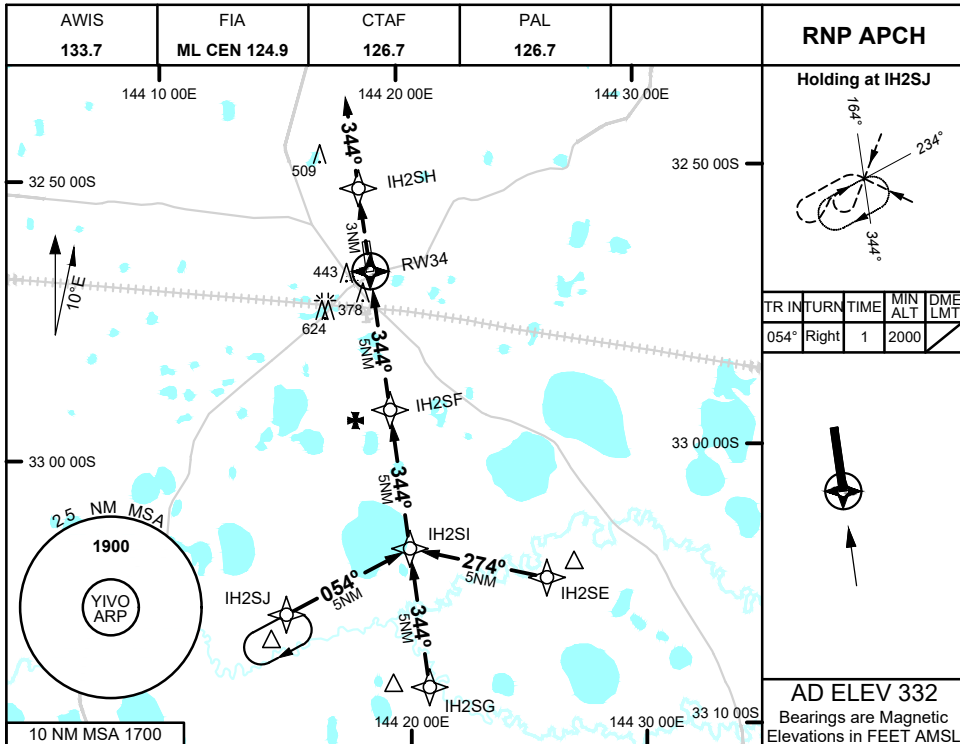
- NOTES**
- MAX IAS:  
INITIAL : 210KTS

CATEGORY	A	B	C	D
LNAV	<b>840 (508 - 2.9)</b>			NOT APPLICABLE
CIRCLING	<b>1040 (708 - 2.4)</b>		<b>1140 (808 - 4.0)</b>	
ALTERNATE	(1208 - 4.4)		(1308 - 6.0)	

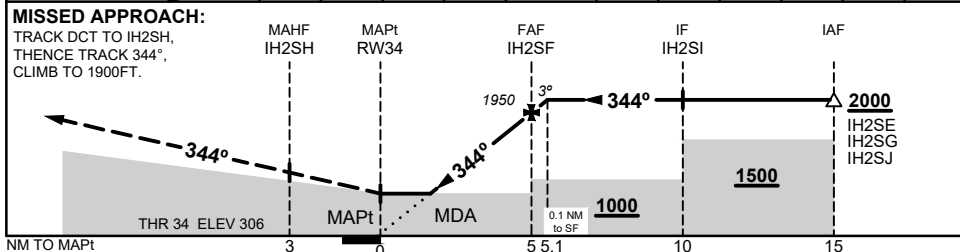
Changes: CIRCLING MINIMA, ALTERNATE MINIMA, 10 NM MSA, 624 FT OBST, Editorial

IVOGN01-174

23 MAR 2023



NM TO NEXT WPT	RW34	1.5	2	3	4	IH2SF	0.1				
ALT (3° APCH PATH)		840	990	1310	1630	1950	2000				



**NOTES**

- MAX IAS:  
INITIAL : 210KTS

CATEGORY	A	B	C	D
LNAV	<b>840</b> (534 - 3.0)			NOT APPLICABLE
CIRCLING	<b>1040</b> (708 - 2.4)		<b>1140</b> (808 - 4.0)	
ALTERNATE	(1208 - 4.4)		(1308 - 6.0)	

Changes: CIRCLING MINIMA, ALTERNATE MINIMA, 10 NM MSA, 624 FT OBST, Editorial

I/VOGN02-174