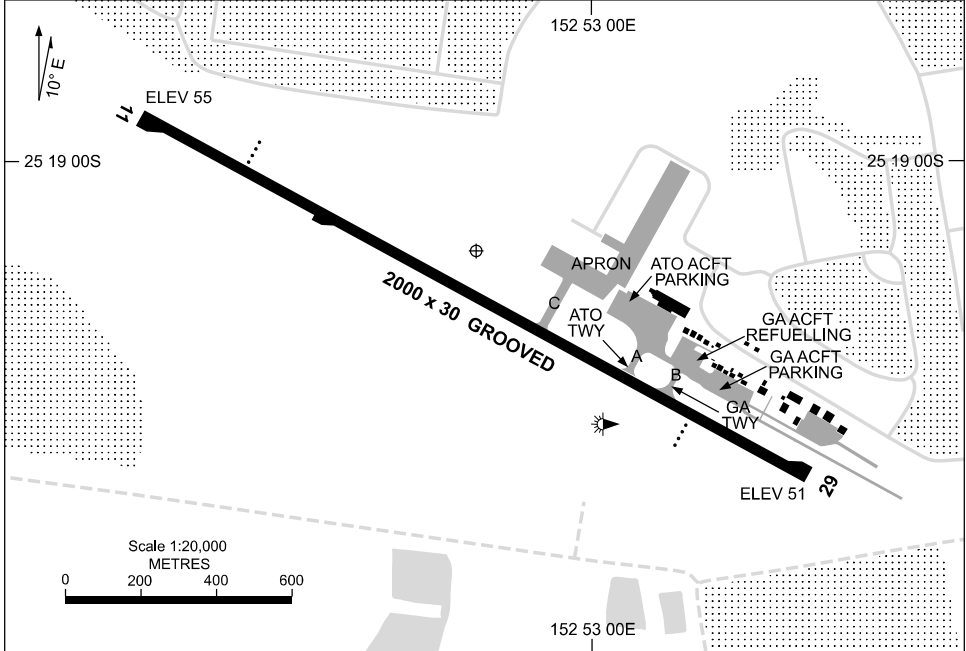


19 MAR 2026

AD ELEV 60  
25 19 08S 152 52 49E

**AERODROME CHART**  
**HERVEY BAY, QLD (YHBA)**

AWIS <b>134.9</b>	FIA <b>BN CEN 124.6</b>	CTAF+AFRU <b>126.55</b>	PAL+AA <b>122.8</b>	Bearings are Magnetic Elevations in FEET AMSL
----------------------	----------------------------	----------------------------	------------------------	--



RWY		AERODROME LIGHTING	
		TAXIWAY	: BLUE EDGE
11	108	PAPI	3.0° 53FT LIRL
	288	29	PAPI 3.0° 53FT LIRL

**NOTES**

- FIA FREQ 124.6 AVBL 500FT.
- PAL RQ THREE ONE-SEC PULSES TO ACTIVATE.

Changes: TWY C, APRON, Editorial.

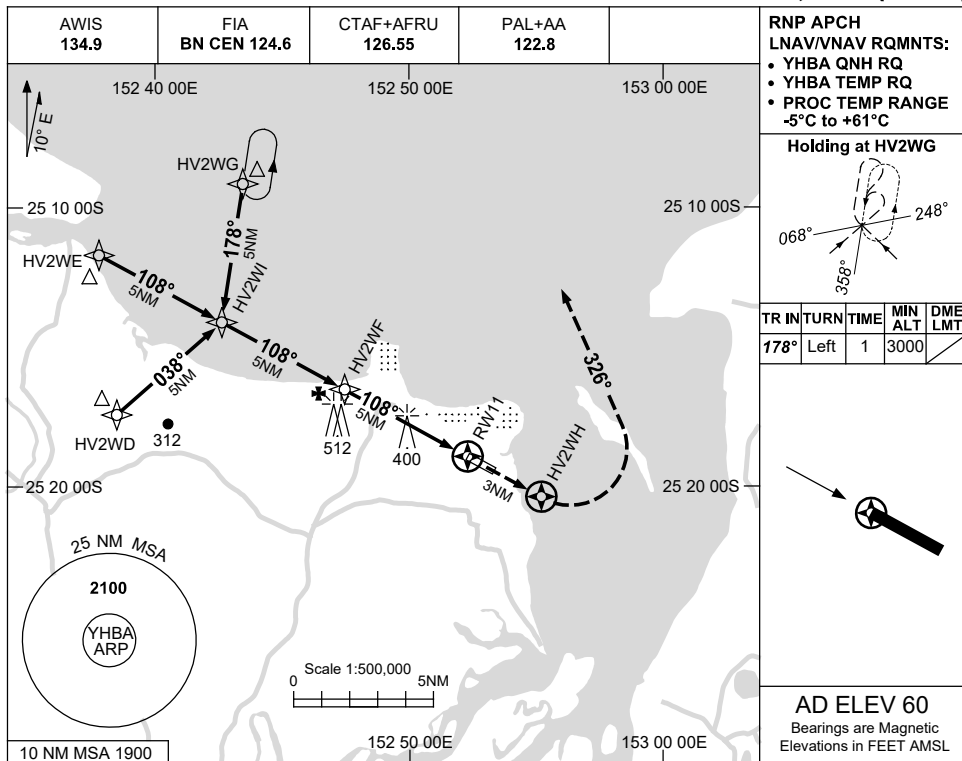
HBAAD01-186

USE QNH

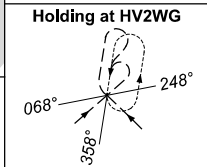
RNP RWY 11

**HERVEY BAY, QLD (YHBA)**

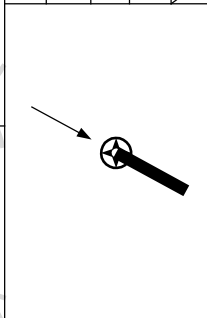
12 JUN 2025



**RNP APCH**  
**LNAV/VNAV RQMNTS:**  
 • YHBA QNH RQ  
 • YHBA TEMP RQ  
 • PROC TEMP RANGE  
 -5°C to +61°C

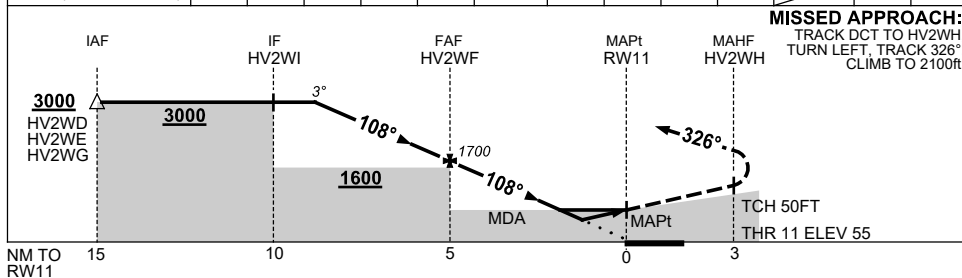


TR	IN	TURN	TIME	MIN ALT	DME LMT
178°	Left	1	3000		



**AD ELEV 60**  
 Bearings are Magnetic  
 Elevations in FEET AMSL

NM TO NEXT WPT	4.1	4	3	2	1	HV2WF	4	3	1.9	1.2	RW11		
ALT (3° APCH PATH)	3000	2970	2650	2330	2020	1700	1380	1060	710	480			



**MISSED APPROACH:**  
 TRACK DCT TO HV2WH,  
 TURN LEFT, TRACK 326°.  
 CLIMB TO 2100ft.

**NOTES**

- MAX IAS: INITIAL : 210KT.

CATEGORY	A	B	C	D	
LNAV/VNAV		480 (425-2.4)		NOT APPLICABLE	
LNAV		710 (650-3.7)			
CIRCLING	800 (740-2.4)	900 (840-4.0)			
ALTERNATE	(1240-4.4)		(1340-6.0)		

Changes: PAL+AA, Editorial.

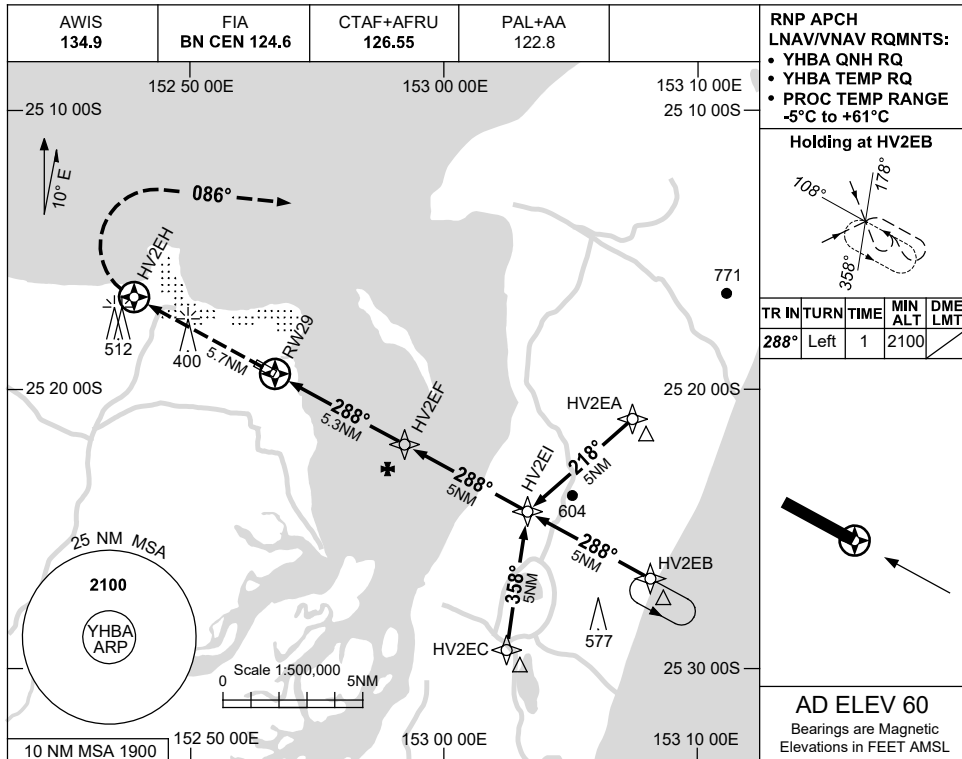
HBAGN01-183

USE QNH

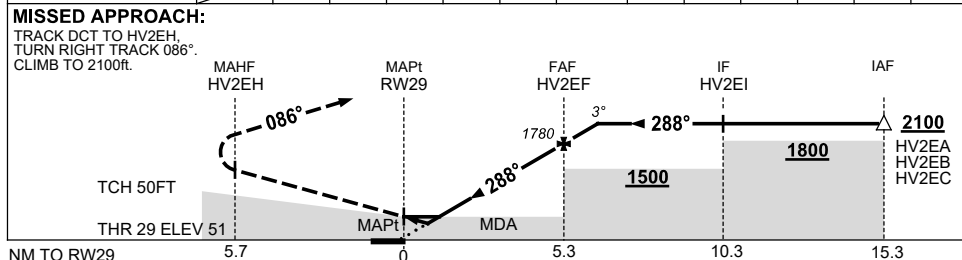
RNP RWY 29

**HERVEY BAY, QLD (YHBA)**

12 JUN 2025



NM TO NEXT WPT	RW29	0.8	1.3	2	3	4	HV2EF	1				
ALT (3° APCH PATH)		340	530	740	1060	1370	1780	2100				



**NOTES**

1. MAX IAS:  
INITIAL : 210KT.

CATEGORY	A	B	C	D	
LNAV/VNAV	<b>340</b> (289-1.6)			NOT APPLICABLE	
LNAV	<b>530</b> (479-2.7)				
CIRCLING	<b>800</b> (740-2.4)		<b>900</b> (840-4.0)		
ALTERNATE	(1240-4.4)		(1340-6.0)		

Changes: PAL+AA, Editorial.

HBAGN02-183