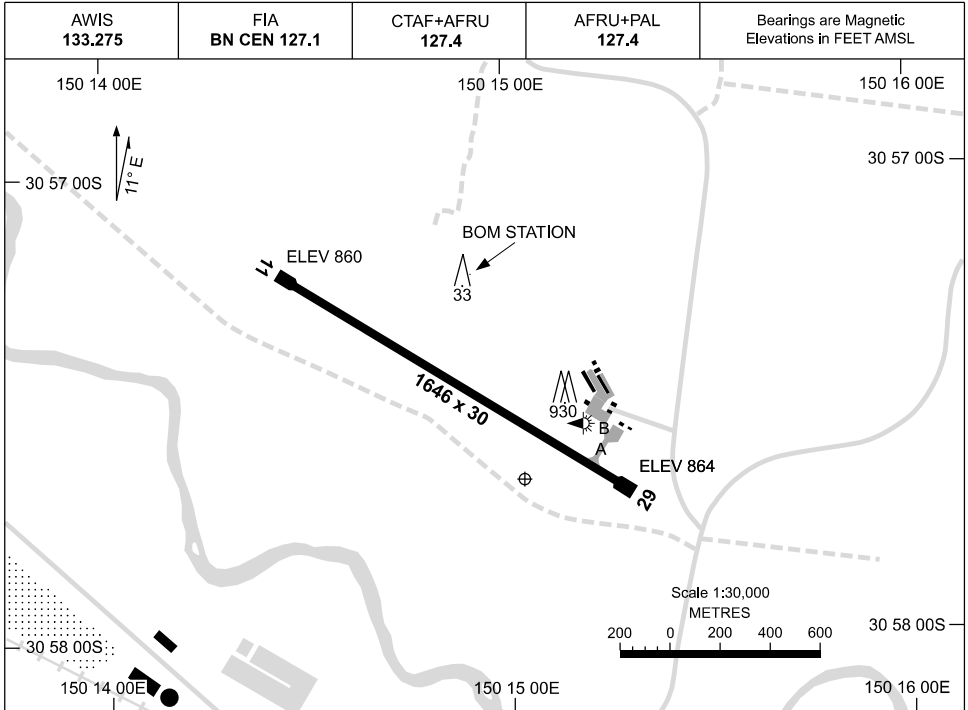


19 MAR 2026

AD ELEV 864
30 57 40S 150 15 02E

AERODROME CHART
GUNNEDAH, NSW (YGDH)



	AERODROME LIGHTING
RWY	TAXIWAY : GREEN CL, BLUE EDGE ON TWY A RL : AFRU+PAL 127.4
11 <small>112</small> <small>292</small> 29	LIRL LIRL

NOTES

1. AWIS RQ ONE ONE-SEC PULSE TO ACTIVATE.

Changes: TURNING NODE DELETED, BOM STATION ADDED, TWY LGT, Editorial.

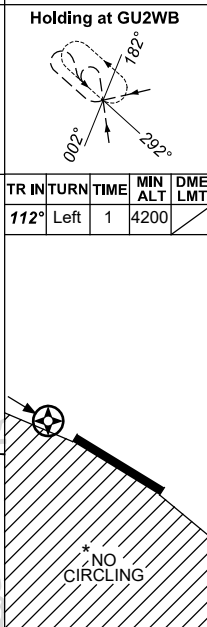
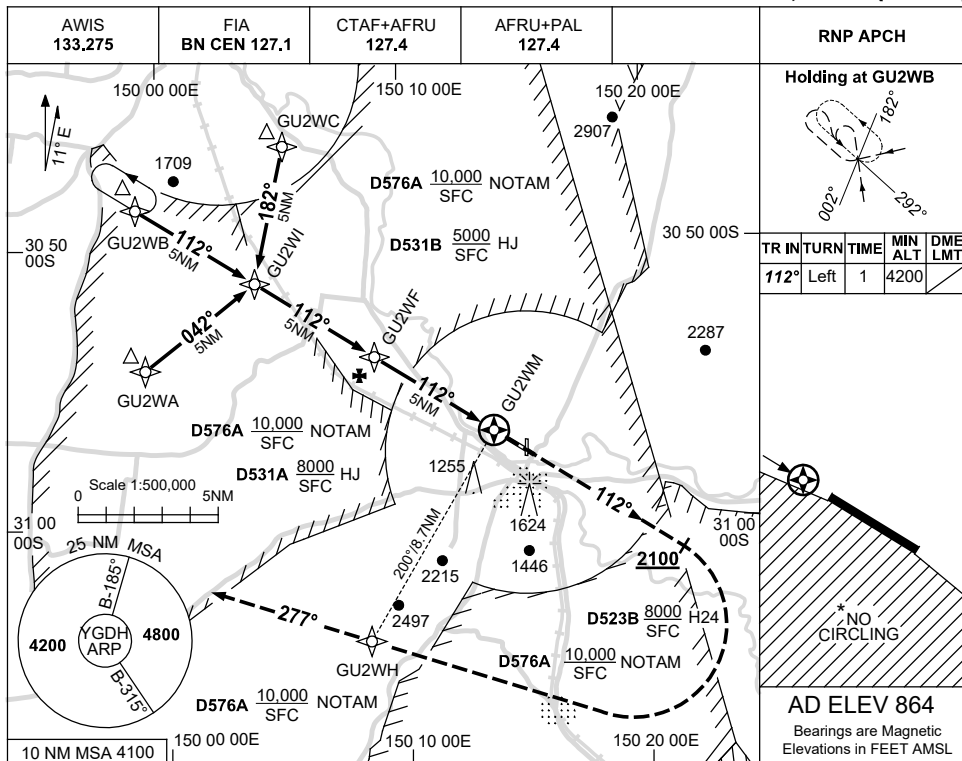
GDHAD01-186

USE QNH

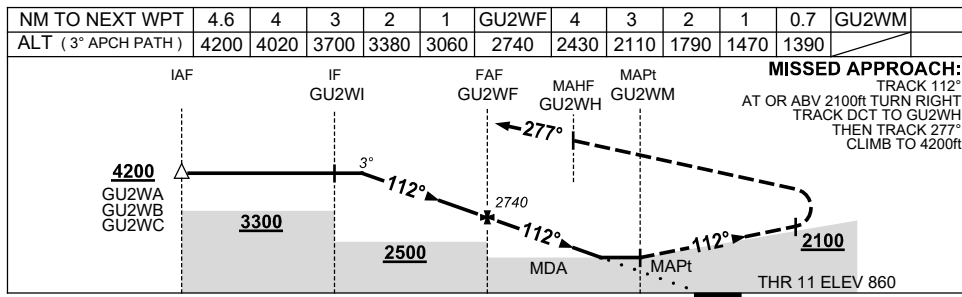
RNP RWY 11

28 NOV 2024

GUNNEDAH, NSW (YGDH)



AD ELEV 864
Bearings are Magnetic
Elevations in FEET AMSL



CATEGORY	A	B	C	D
LNAV	1390 (526-3.0)			NOT APPLICABLE
CIRCLING*	1770 (906-2.4)	1800 (936-4.0)		
ALTERNATE	(1406-4.4)		(1436-6.0)	

NOTES
1. MAX IAS: INITIAL : 210KT.
* 2. NO CIRCLING SOUTH OF RWY 11 / 29.

Changes: MISSED APCH TURN ALTITUDE.

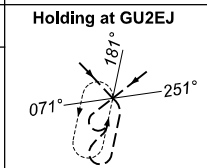
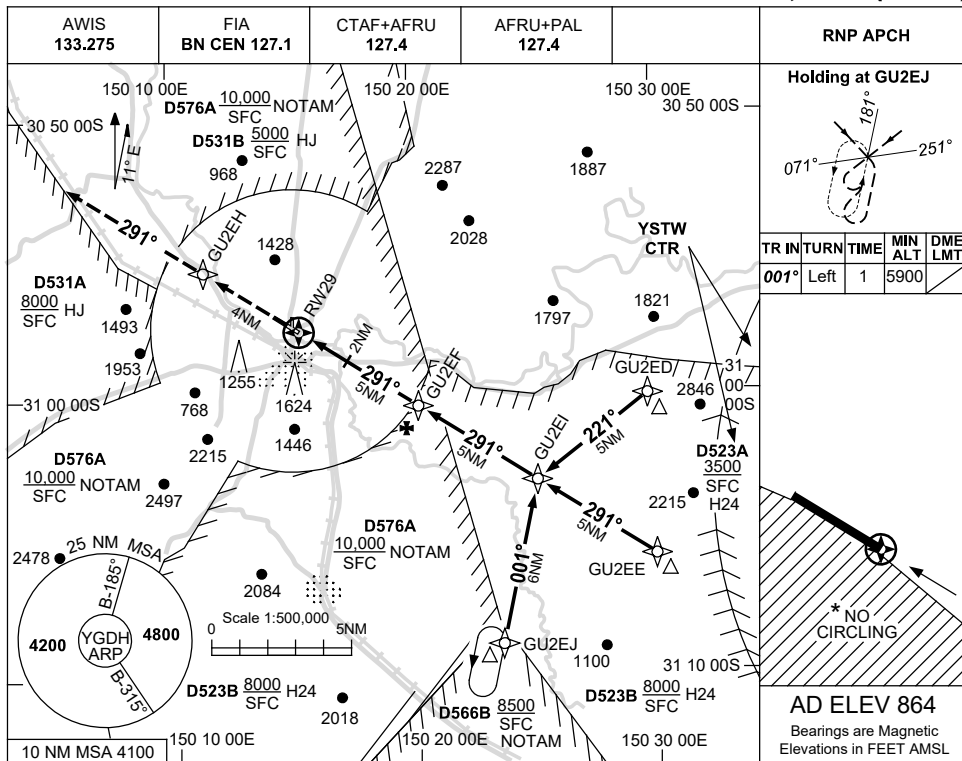
GDHGN01-181

USE QNH

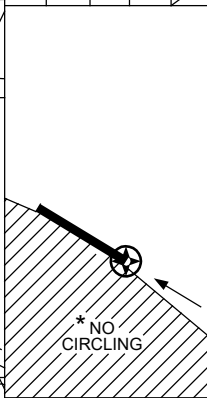
RNP RWY 29

GUNNEDAH, NSW (YGDH)

13 JUN 2024

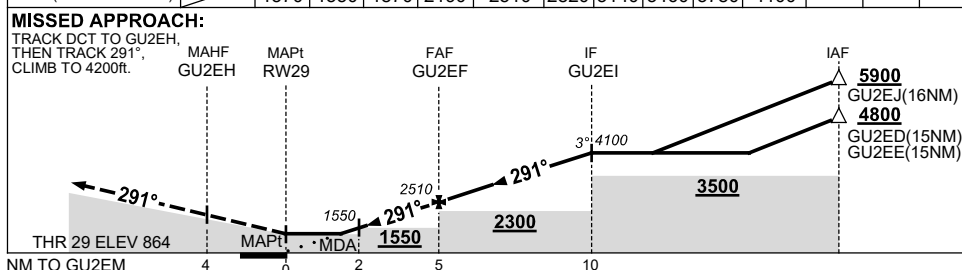


TR	IN	TURN	TIME	MIN	DME
				ALT	LMT
001°	Left	1	5900		



AD ELEV 864
Bearings are Magnetic
Elevations in FEET AMSL

NM TO NEXT WPT	RW29	1.4	2	3	4	GU2EF	1	2	3	4	GU2EI		
ALT (3° APCH PATH)		1370	1550	1870	2190	2510	2820	3140	3460	3780	4100		



NM TO GU2EM	4	0	2	5	10
MAPt					
MDA					

CATEGORY	A	B	C	D
LNAV	1370 (506-2.9)			NOT APPLICABLE
CIRCLING *	1770 (906-2.4)		1800 (936-4.0)	
ALTERNATE	(1406-4.4)		(1436-6.0)	

- NOTES**
- MAX IAS: INITIAL : 210KT.
 - NO CIRCLING S OF RWY 11/29.
 - HOLDING OVERLIES YQDI RNP W PROC.

Changes: AWIS FREQ, NOTE 3 REMOVED, Editorial.

GDHGN02-179