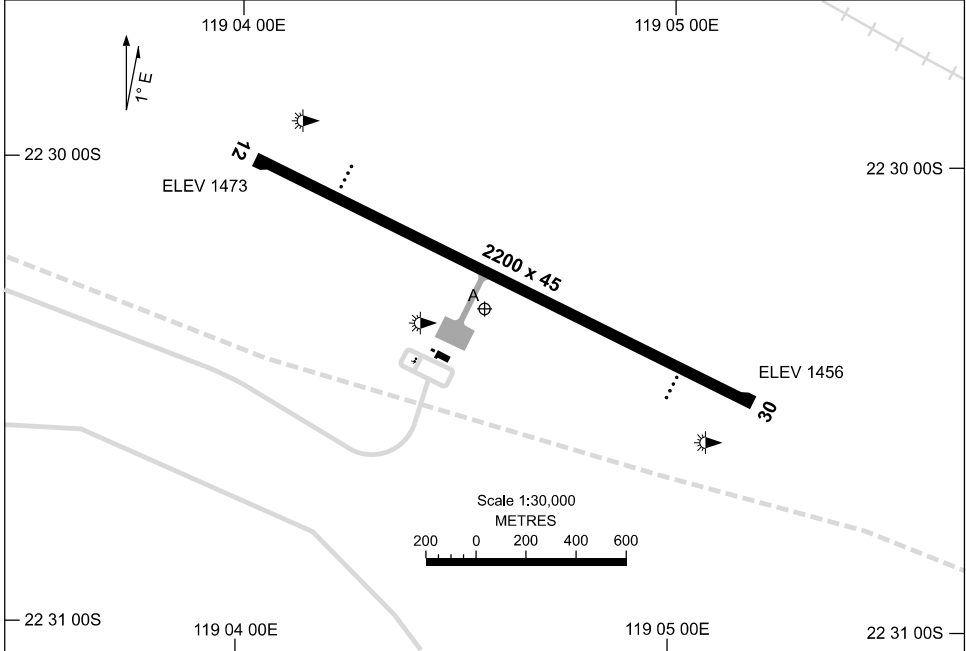


19 MAR 2026

AD ELEV 1473
22 30 19S 119 04 34E

AERODROME CHART
GDUI-DARRI MINE, WA (YKDD)

AWIS 133.35	FIA ML CEN 128.15	CTAF+AFRU 127.05	PAL+AA 119.6		Bearings are Magnetic Elevations in FEET AMSL
----------------	----------------------	---------------------	-----------------	--	--



RWY	AERODROME LIGHTING	
	TAXIWAY : BLUE EDGE	RL : PAL+AA 119.6 , SDBY (20 SEC)
12 ¹¹⁴	PAPI 3.0° 54FT LIRL PTBL	
²⁹⁴ 30	PAPI 3.0° 54FT LIRL PTBL	

NOTES

- AFRU SIGNAL NOT AVBL ON GROUND. AFRU LOCATED AT FORTESCUE DAVE FORREST (YDF).
- FIA FREQ 128.15 AVBL IN CIRCUIT AREA.
- AWIS RQ THREE ONE-SECOND PULSES TO ACTIVATE.
- RWY 12/30 PTBL LIGHTING AVBL FOR EMERG (MERCY FLIGHTS) ONLY. 2HR PN TO ARO.

Changes: IWDI, Editorial.

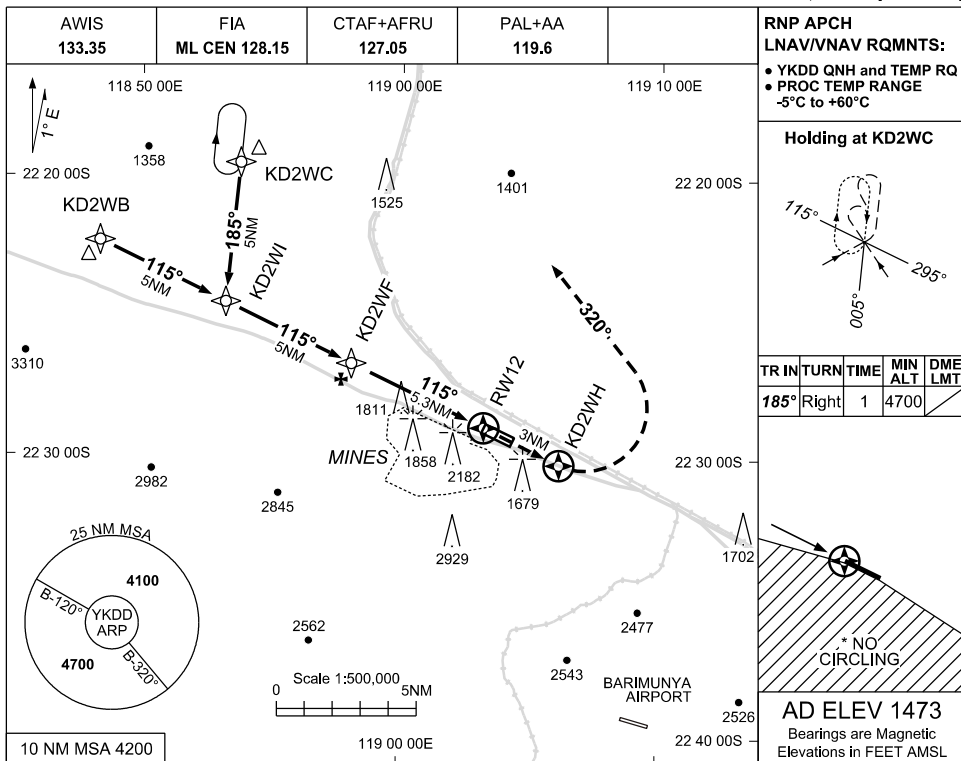
KDDAD01-186

USE QNH

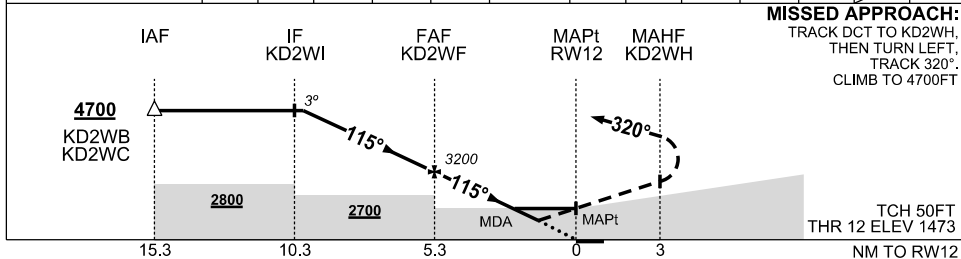
RNP RWY 12

30 NOV 2023

GUDAI-DARRI MINE, WA (YKDD)



NM TO NEXT WPT	4.7	4	3	2	1	KD2WF	4	3	2	1.7	1.0	RWY12
ALT (3° APCH PATH)	4700	4470	4160	3840	3520	3200	2800	2480	2160	2070	1840	



CATEGORY	A	B	C	D
LNAV/VNAV		1840 (367-2.1)		
LNAV		2070 (597-3.4)		
* CIRCLING	2080 (607-2.4)		2210 (737-4.0)	2270 (797-5.0)
ALTERNATE	(1107-4.4)		(1237-6.0)	(1297-7.0)

- NOTES**
- MAX IAS:
HOLDING: 200KT
INITIAL: 210KT
MAP TURN: 210KT
 - NO CIRCLING
S OF RWY 12/30
 - CAUTION: YBR
PROCS ADJACENT TO S.
YDFE AND YCHK
PROCS ADJACENT TO NE.

Changes: CHART TITLE, EDITORIAL

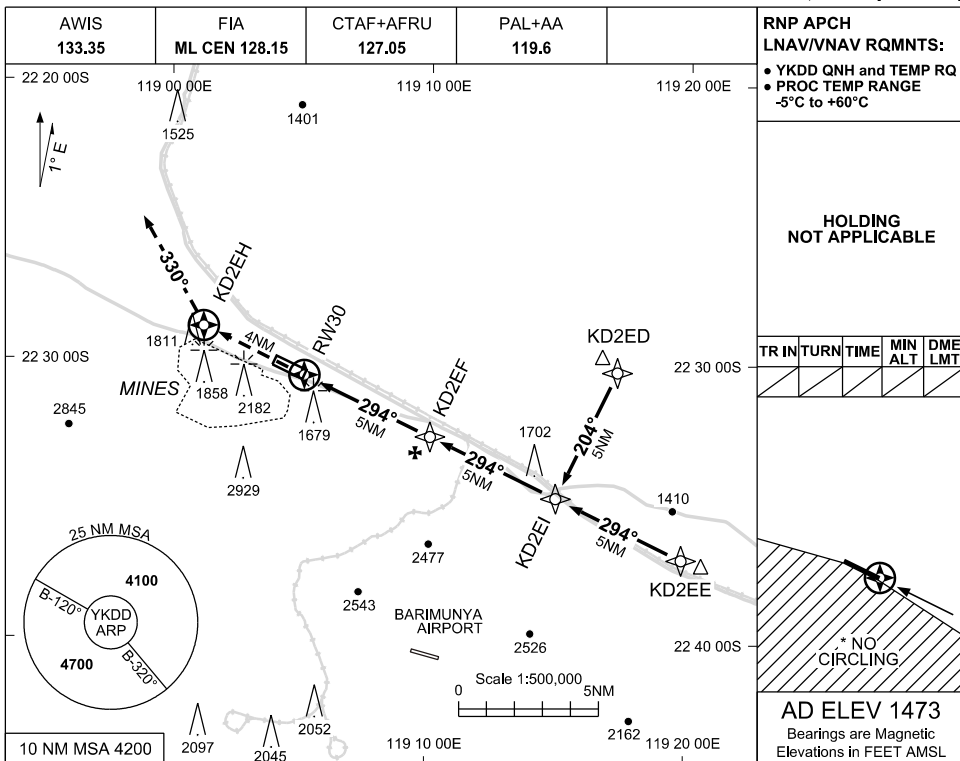
KDDGN01-177

USE QNH

RNP RWY 30

30 NOV 2023

GUDAI-DARRI MINE, WA (YKDD)



RNP APCH LNAV/VNAV RQMNTS:

- YKDD QNH and TEMP RQ
- PROC TEMP RANGE -5°C to +60°C

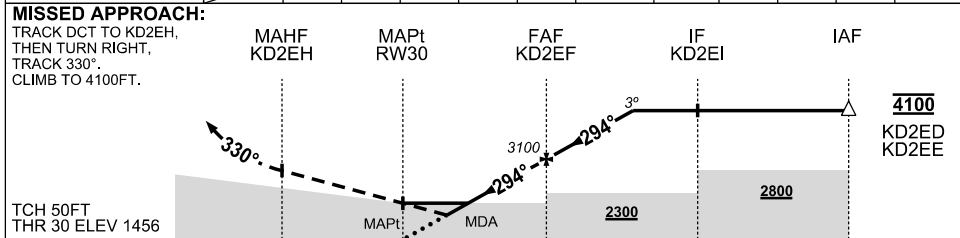
HOLDING NOT APPLICABLE

TR	IN	TURN	TIME	MIN ALT	DME LMT
/	/	/	/	/	/

*** NO CIRCLING**

AD ELEV 1473
Bearings are Magnetic
Elevations in FEET AMSL

NM TO NEXT WPT	RW30	1.0	1.7	2	3	4	KD2EF	1	2	3.1		
ALT (3° APCH PATH)		1820	2050	2140	2460	2780	3100	3420	3740	4100		



NOTES

1. MAX IAS: INITIAL : 210KT
2. NO CIRCLING S OF RWY 12/30
3. CAUTION: YBRY PROCS ADJACENT TO S. YDFD PROCS ADJACENT TO NE. PROC OVERLAID BY YCHK PROCS. PRESCRIBED ALTS ENSURE SEPARATION.

CATEGORY	A	B	C	D
LNAV/VNAV		1820 (364-2.0)		NOT AUTHORISED
LNAV		2050 (594-3.4)		
* CIRCLING	2080 (607-2.4)		2210(737-4.0)	
ALTERNATE	(1107-4.4)		(1237-6.0)	

Changes: CHART TITLE, EDITORIAL

KDDGN02-177