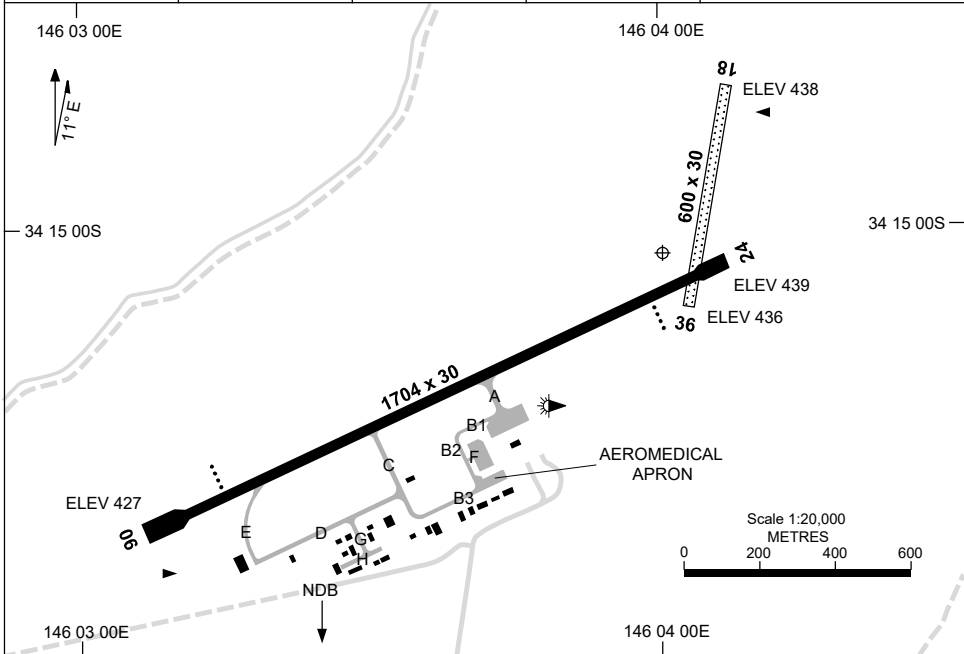


20 MAR 2025

AD ELEV 439
34 15 03S 146 04 02E

AERODROME CHART
GRIFFITH, NSW (YGTH)

AWIS 132.95	FIA ML CEN 134.65	CTAF+AFRU 126.55	AFRU+PAL 126.55	Bearings are Magnetic Elevations in FEET AMSL
----------------	----------------------	---------------------	--------------------	--



RWY		AERODROME LIGHTING
		TAXIWAY : BLUE EDGE TWY A, GREEN CL REFLECTORS TWY B1, B2 AND B3 RL : AFRU+PAL 126.55 , SDBY (60 SEC)
06 ⁰⁵⁵		PAPI 3.0° 39.4FT LIRL
²³⁵ 24		PAPI 3.0° 39.4FT LIRL
18 ¹⁷⁸		NIL
³⁵⁸ 36		NIL

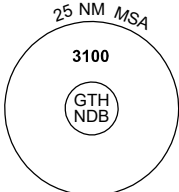
NOTES

Changes: APRON AND TWY LABELLING, WDI REPOSITIONED, Editorial.

GTHAD01-182


5 NOV 2020

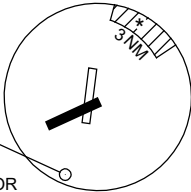
AWIS 132.95	FIA ML CEN 134.65	CTAF+AFRU 126.55	AFRU+PAL 126.55		Bearings are Magnetic Elevations in FEET AMSL
----------------	----------------------	---------------------	--------------------	--	--



10 NM MSA 3100

REFERENCE WAYPOINT GTH NDB




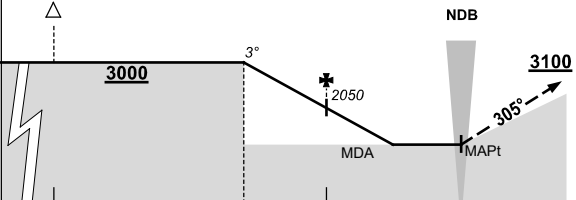


AD ELEV 439

* NO CIRCLING IN SECTOR
NE OF RWYS 06 & 36
BEYOND 3NM.

MNG TO GTH



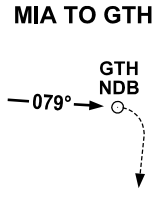


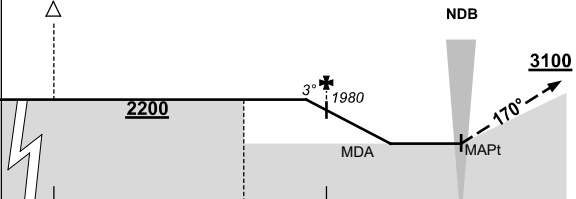
MISSED APPROACH:

TURN LEFT,
TRACK 305°. CLIMB TO 3100FT.

NM TO GTH NDB	25	15	8	5	0														
CIRCLING MINIMA				A,B: 1240-2.4	C: 1340-4.0	D: N/A													
NM TO GTH NDB	8	7	6	5	4	3	2.8	2.5											
ALT (3° APCH PATH)	3000	2680	2360	2050	1730	1410	1340	1240											

MIA TO GTH



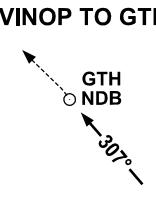


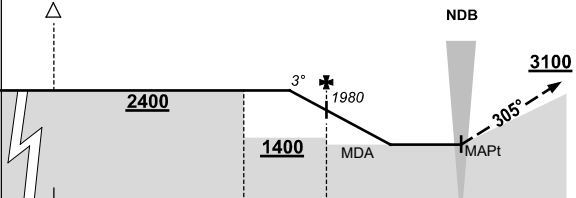
MISSED APPROACH:

TURN RIGHT,
TRACK 170°. CLIMB TO 3100FT.

NM TO GTH NDB	25	15	8	5	0														
CIRCLING MINIMA				A,B: 1240-2.4	C: 1340-4.0	D: N/A													
NM TO GTH NDB	5.7	5	4	3	2.7														
ALT (3° APCH PATH)	2200	1980	1660	1340	1240														

VINOP TO GTH





MISSED APPROACH:

TURN LEFT,
TRACK 305°. CLIMB TO 3100FT.

NM TO GTH NDB	25	15	8	5	0														
CIRCLING MINIMA				A,B: 1240-2.4	C: 1340-4.0	D: N/A													
NM TO GTH NDB	6.3	6	5	4	3	2.7													
ALT (3° APCH PATH)	2400	2300	1980	1660	1340	1240													

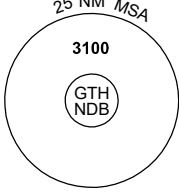
Changes: Editorial.

GTHDG01-165

GNSS ARRIVAL PROCEDURES GRIFFITH, NSW (YGTH) Page 2

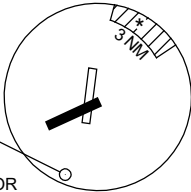
5 NOV 2020

AWIS 132.95	FIA ML CEN 134.65	CTAF+AFRU 126.55	AFRU+PAL 126.55		Bearings are Magnetic Elevations in FEET AMSL
----------------	----------------------	---------------------	--------------------	--	--



25 NM MSA
3100
GTH NDB

REFERENCE WAYPOINT GTH NDB



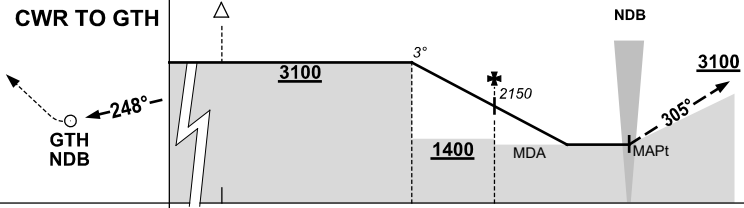
3 NM

10 NM MSA 3100

GTH NDB 305

AD ELEV 439

* NO CIRCLING IN SECTOR
NE OF RWYS 06 & 36
BEYOND 3NM.

CWR TO GTH											MISSED APPROACH: TURN RIGHT, TRACK 305°. CLIMB TO 3100FT.						
NM TO GTH NDB	25	15	8	5	0												
CIRCLING MINIMA	A,B: 1240-2.4				C: 1340-4.0		D: N/A										
NM TO GTH NDB	8	7	6	5	4	3	2.5	2.2									
ALT (3° APCH PATH)	3100	2780	2460	2150	1830	1510	1340	1240									

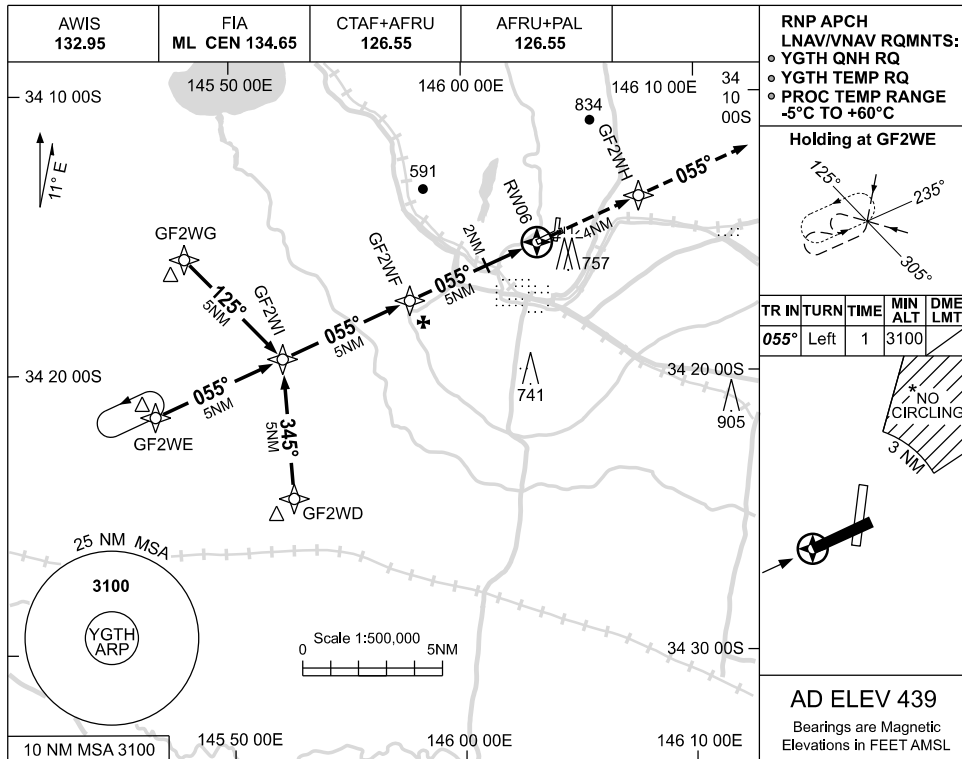
Changes: Editorial.

USE QNH

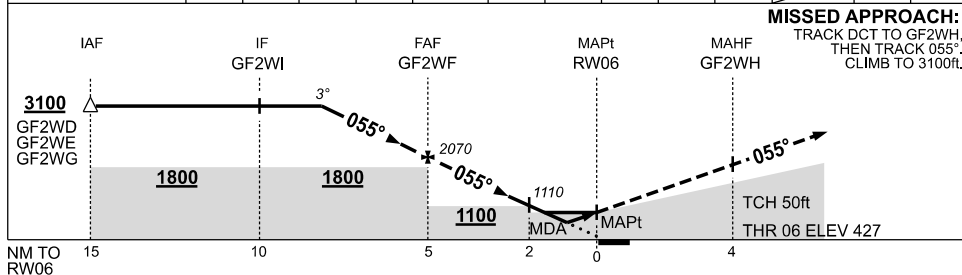
RNP RWY 06

GRIFFITH, NSW (YGTH)

19 MAR 2026



NM TO NEXT WPT	3.2	3	2	1	GF2WF	4	3	2	1.8	1.4	RW06		
ALT (3° APCH PATH)	3100	3020	2710	2390	2070	1750	1430	1110	1050	930			



NOTES

CATEGORY	A	B	C	D
LNAV/VNAV		930 (503-2.8)		NOT APPLICABLE
LNAV		1050 (623-3.5)		
CIRCLING *	1240 (801-2.4)		1340 (901-4.0)	
ALTERNATE	(1301-4.4)		(1401-6.0)	

- MAX IAS: INITIAL : 210KT.
- * NO CIRCLING IN SECTOR NE OF RWY 06 & 36 BEYOND 3NM.

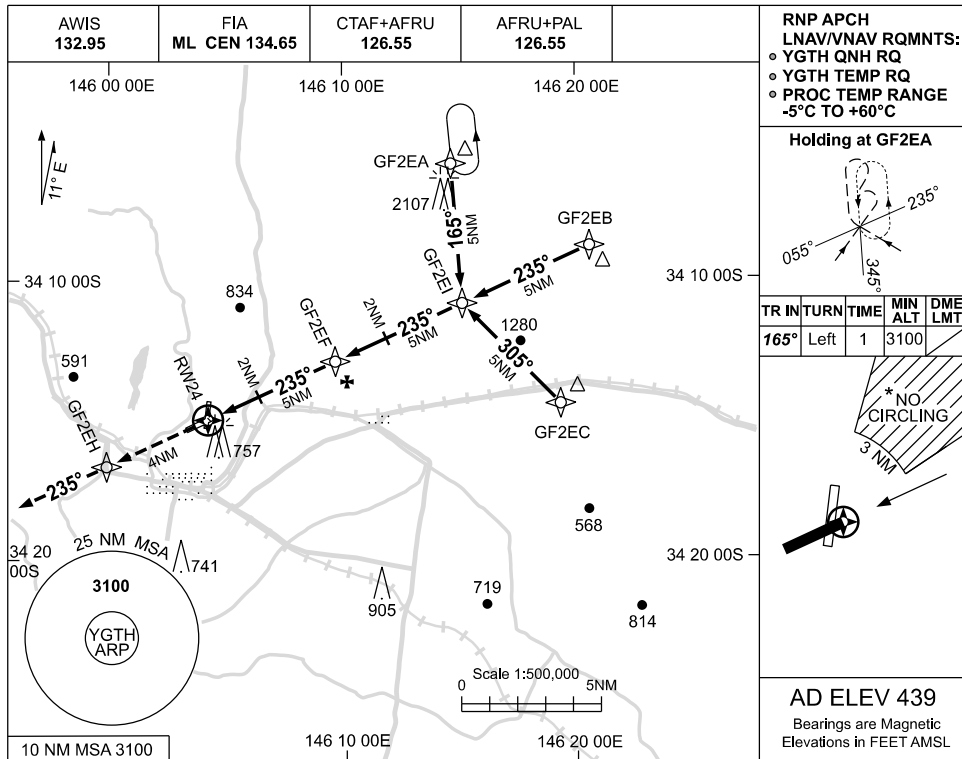
Changes: 773FT OBST DELETED, Editorial.

GTHGN01-186

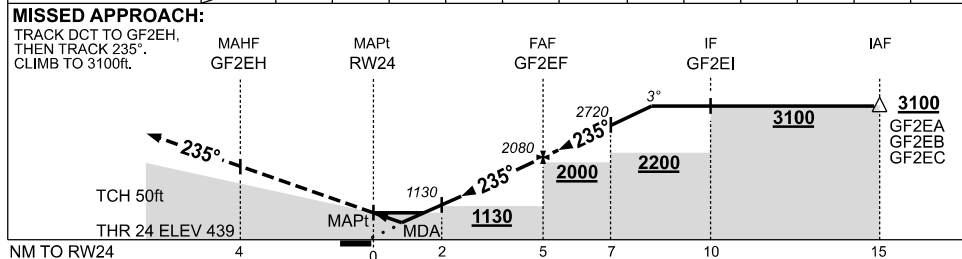
USE QNH

RNP RWY 24
GRIFFITH, NSW (YGTH)

19 MAR 2026



NM TO NEXT WPT	RW24	1.3	1.7	2	3	4	GF2EF	1	2	3	3.2		
ALT (3° APCH PATH)		910	1040	1130	1440	1760	2080	2400	2720	3040	3100		



NOTES

CATEGORY	A	B	C	D
LNAV/VNAV		910 (471-2.7)		NOT APPLICABLE
LNAV		1040 (601-3.4)		
CIRCLING *	1240 (801-2.4)		1340 (901-4.0)	
ALTERNATE	(1301-4.4)		(1401-6.0)	

1. MAX IAS: INITIAL : 210KT.
- * 2. NO CIRCLING IN SECTOR NE OF RWY 06 & 36 BEYOND 3NM.

Changes: 773FT OBST DELETED, Editorial.

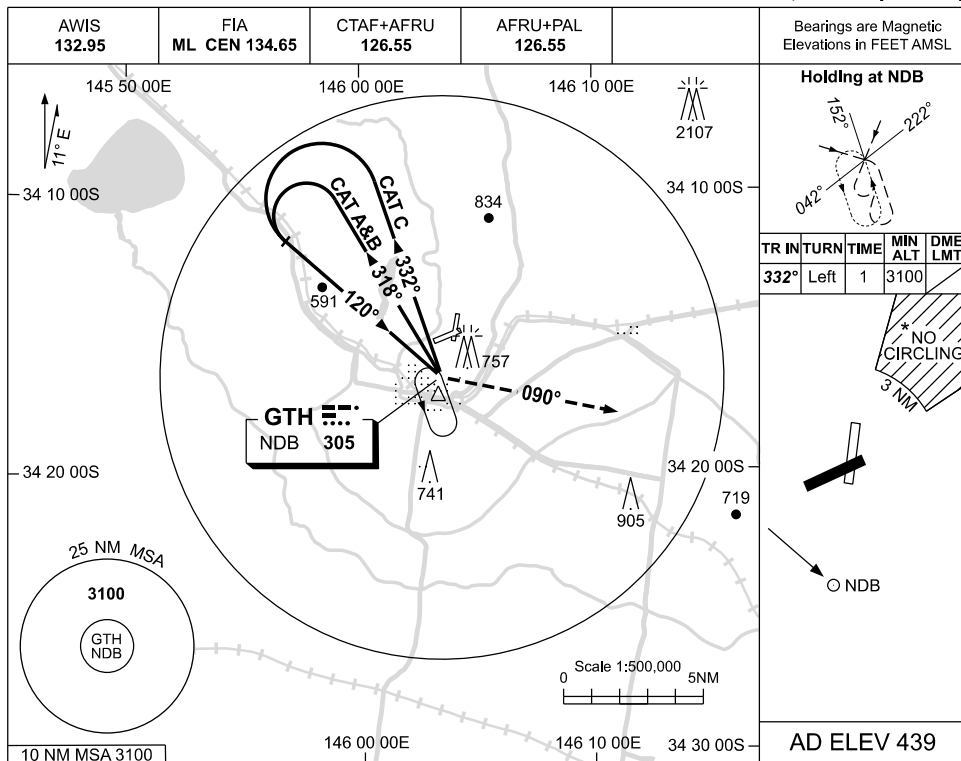
GTHGN02-186

USE QNH

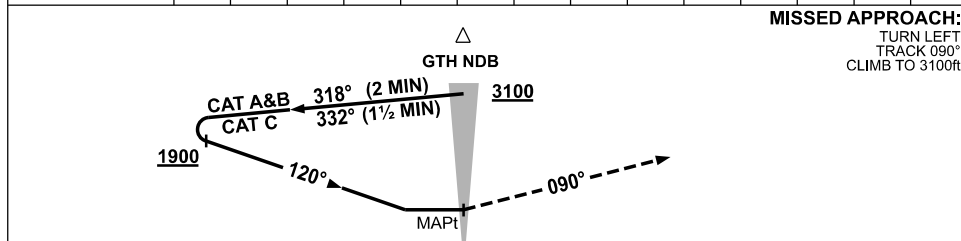
NDB-A

GRIFFITH, NSW (YGTH)

19 MAR 2026



DME DIST	NOT APPLICABLE							
ALT								



NOTES

CATEGORY	A	B	C	D
CIRCLING *	1240 (801-2.4)	1340 (901-4.0)		NOT APPLICABLE
ALTERNATE	(1301-4.4)	(1401-6.0)		

1. MAX IAS:
INITIAL : 210KT.
- * 2. NO CIRCLING IN
SECTOR NE OF
RWY 06 & 36
BEYOND 3NM.

Changes: 773FT OBST DELETED, Editorial.

GTHNB01-186