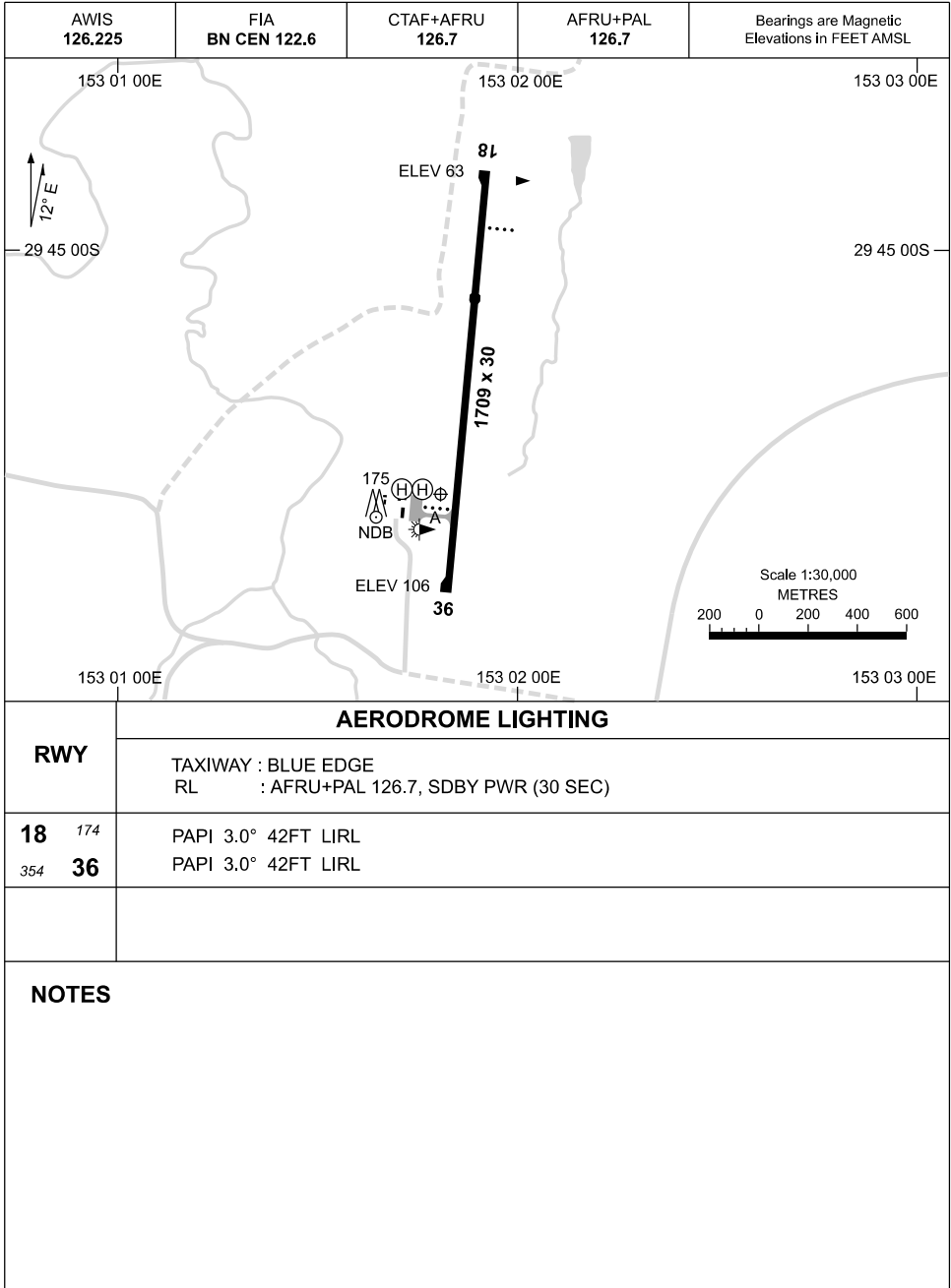


19 MAR 2026

AD ELEV 110  
29 45 34S 153 01 48E

**AERODROME CHART**  
**GRAFTON, NSW (YGFN)**

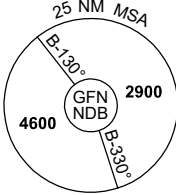


Changes: SDBY PWR SWITCHOVER TIME, Editorial.

GFNAD01-186

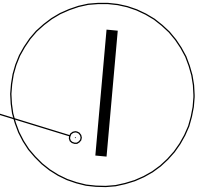
25 MAR 2021

AWIS 126.225	FIA BN CEN 122.6	CTAF+AFRU 126.7	AFRU+PAL 126.7		Bearings are Magnetic Elevations in FEET AMSL
-----------------	---------------------	--------------------	-------------------	--	--



**REFERENCE WAYPOINT GFN NDB**

**GFN NDB**  
389



10 NM MSA 2500

AD ELEV 110

**SECTOR A**

**MISSED APPROACH:**  
CLIMB ON TRACK TO 2500FT. PASSING 1500FT TURN RIGHT, TRACK DIRECT TO GFN NDB.

NM TO GFN NDB	25	20	15	13	6	3	0											
<b>CIRCLING MINIMA</b>				A,B: 780-2.4		C: 940-4.0		D: N/A										
NM TO GFN NDB	13.7	13	12	11	10	9	8	7	6	5	4	3	2.2	2	1.7			
ALT (3° APCH PATH)	4600	4380	4060	3750	3430	3110	2790	2470	2160	1840	1520	1200	940	880	780			

**SECTOR B**

**MISSED APPROACH:**  
CLIMB ON TRACK TO 2500FT. PASSING 1500FT TURN RIGHT, TRACK DIRECT TO GFN NDB.

NM TO GFN NDB	25	15	13	7	6	3	0											
<b>CIRCLING MINIMA</b>				A,B: 780-2.4		C: 940-4.0		D: N/A										
NM TO GFN NDB	6.9	6	5	4	3	2	1	0.6	0.1									
ALT (3° APCH PATH)	2900	2650	2330	2020	1700	1380	1060	940	780									

**SECTOR C**

**MISSED APPROACH:**  
CLIMB ON TRACK TO 2500FT. PASSING 2000FT TURN RIGHT, TRACK DIRECT TO GFN NDB.

NM TO GFN NDB	25	15	12	6	3	0												
<b>CIRCLING MINIMA</b>				A,B: 780-2.4		C: 940-4.0		D: N/A										
NM TO GFN NDB	12.7	12	11	10	9	8	7	6	5	4	3	2	1.2	1	0.7			
ALT (3° APCH PATH)	4600	4370	4050	3730	3410	3090	2770	2460	2140	1820	1500	1180	940	860	780			

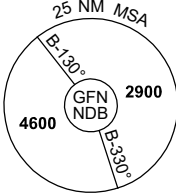
Changes: Editorial.

GFNDG01-166

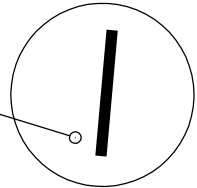
# GNSS ARRIVAL PROCEDURES GRAFTON, NSW (YGFN) Page 2

25 MAR 2021

AWIS 126.225	FIA BN CEN 122.6	CTAF+AFRU 126.7	AFRU+PAL 126.7		Bearings are Magnetic Elevations in FEET AMSL
-----------------	---------------------	--------------------	-------------------	--	--



**REFERENCE WAYPOINT GFTN NDB**



10 NM MSA 2500

AD ELEV 110

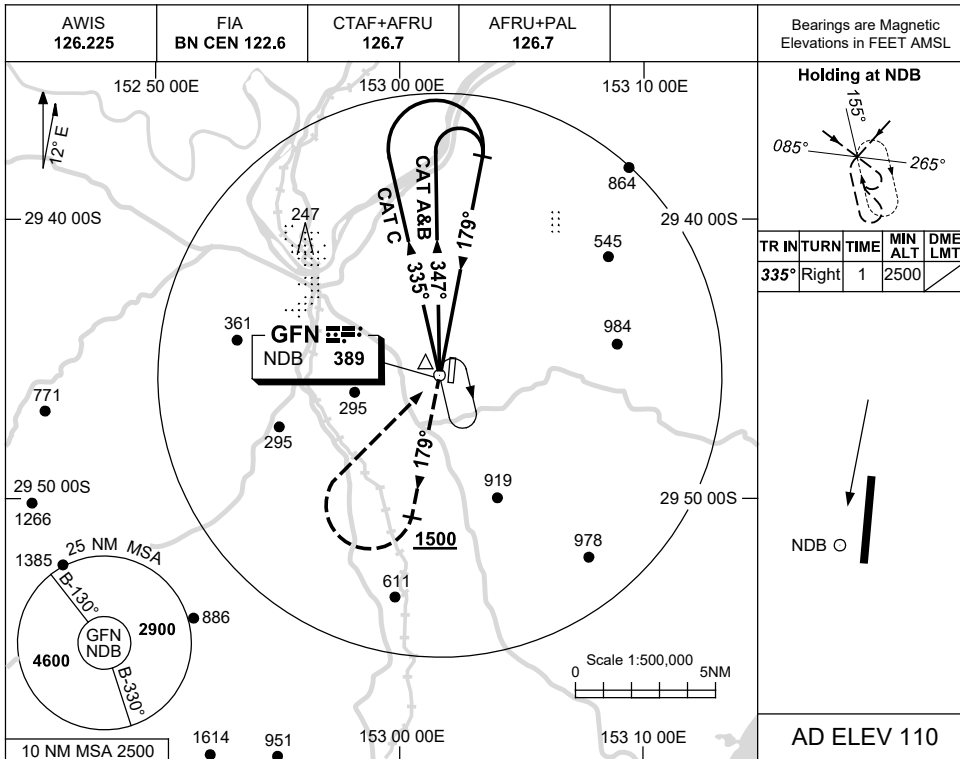
<b>SECTOR D</b>											<b>MISSED APPROACH:</b>			
	<p>CLIMB ON TRACK TO 2500FT. PASSING 1500FT TURN RIGHT, TRACK DIRECT TO GFTN NDB.</p>													
NM TO GFTN NDB	25	18	15	10	7	6	3	0						
<b>CIRCLING MINIMA</b>	A,B: 850-2.4			C: 940-4.0			D: N/A							
NM TO GFTN NDB	14	13	12	11	10	9	8	7	6	5	4	3	2.5	2.2
ALT (3° APCH PATH)	4600	4280	3960	3650	3330	3010	2690	2370	2060	1740	1420	1100	940	850



USE QNH

NDB RWY 18  
GRAFTON, NSW (YGFN)

25 MAR 2021

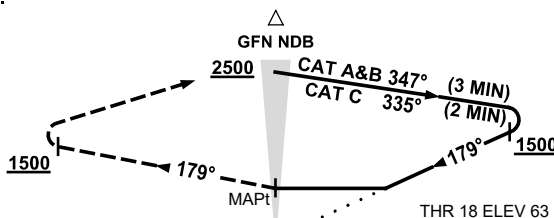


AD ELEV 110

DME DIST	NOT APPLICABLE				
ALT					

**MISSED APPROACH:**

TRACK 179°.  
CLIMB TO 2500FT.  
AT 1500FT TURN RIGHT.  
TRACK TO GFN NDB.



THR 18 ELEV 63

**NOTES**

CATEGORY	A	B	C	D
S-I NDB	710 (647-3.7)			NOT APPLICABLE
CIRCLING	780 (670-2.4)	940 (830-4.0)		
ALTERNATE	(1170-4.4)		(1330-6.0)	

- MAX IAS:  
HOLDING: 210KT.  
INITIAL:  
CAT A&B 140KT.  
CAT C 210KT.  
MAP TURN: 210KT.

Changes: Editorial.

GFNNB01-166