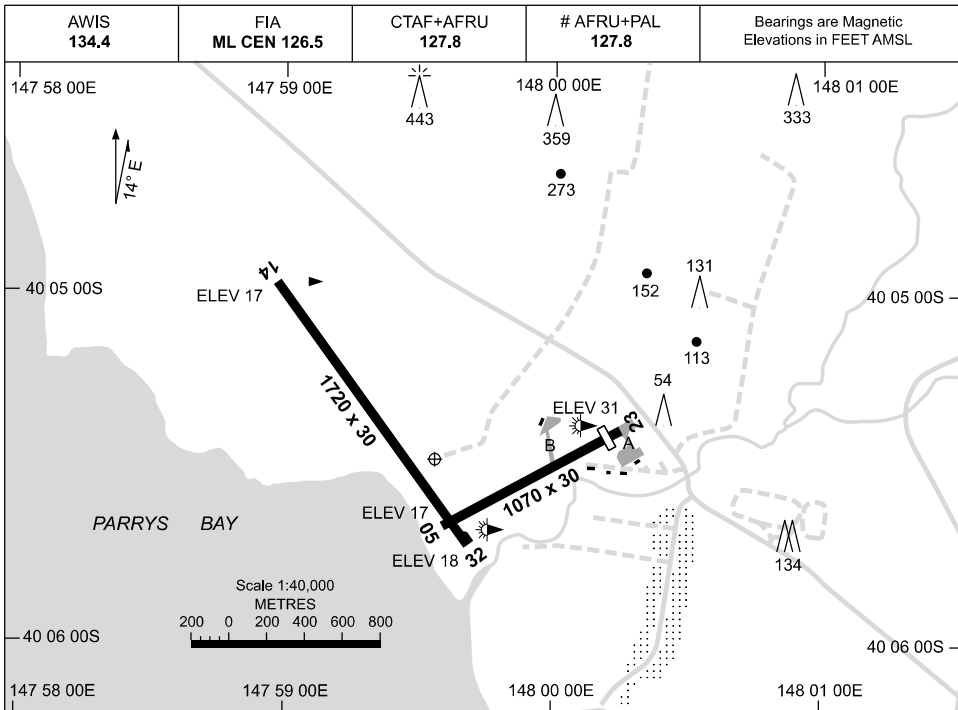


27 NOV 2025

AD ELEV 34
40 05 29S 147 59 34E

**AERODROME CHART
FLINDERS ISLAND, TAS (YFLI)**



		AERODROME LIGHTING	
RWY		HBN	: FLG R 1 SEC
		TAXIWAY	: BLUE EDGE
		RL	: AFRU+PAL 127.8 , SDBY (15 SEC)
14	¹²⁹	LIRL	
³⁰⁹ 32		LIRL	
05	⁰⁴⁷	LIRL	
²²⁷ 23		LIRL	

NOTES

- # 1. ACTIVATION RANGE MAY BE REDUCED TO THE NORTH DUE TO HIGH TERRAIN.
2. AWIS 134.4 ACTIVATED BY 1 SEC TRANSMISSION.
3. FIA FREQ 126.5 AVBL CIRCUIT AREA.

Changes: RWY 14 / 32 BRG.

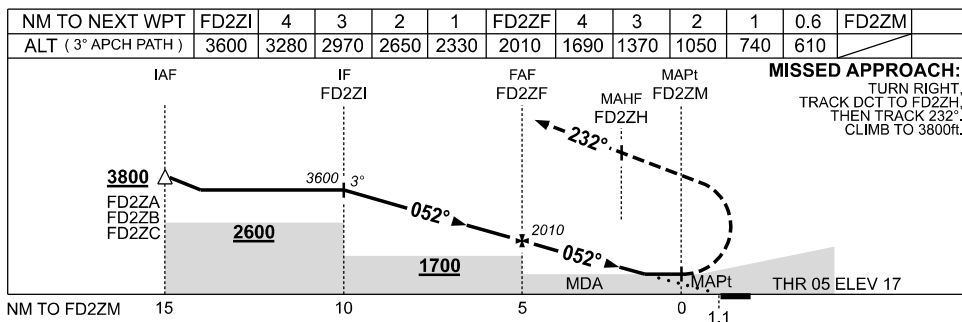
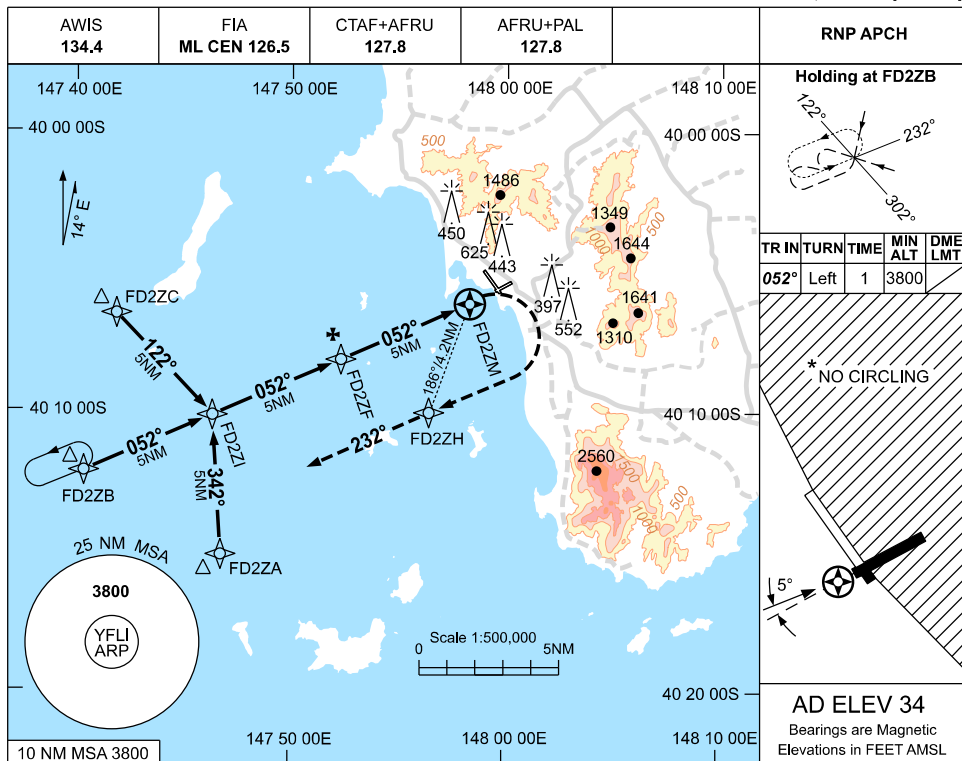
FLIAD01-185

USE QNH

RNP Z RWY 05

27 NOV 2025

FLINDERS ISLAND, TAS (YFLI)



CATEGORY	A	B	C	D
LNAV	610 (593-3.4)			NOT APPLICABLE
CIRCLING *	1170 (1136-2.4)		1270 (1236-4.0)	
ALTERNATE	(1636-4.4)		(1736-6.0)	

- NOTES**
- MAX IAS: INITIAL :210KT
MISSED APCH :160KT
TURN
 - NO CIRCLING EAST OF RWY 14 / 32.
 - COLOUR: SEE SPEC NOTICES.

Changes: LNAV MINIMA, WPT NAMING CONVENTION, Editorial.

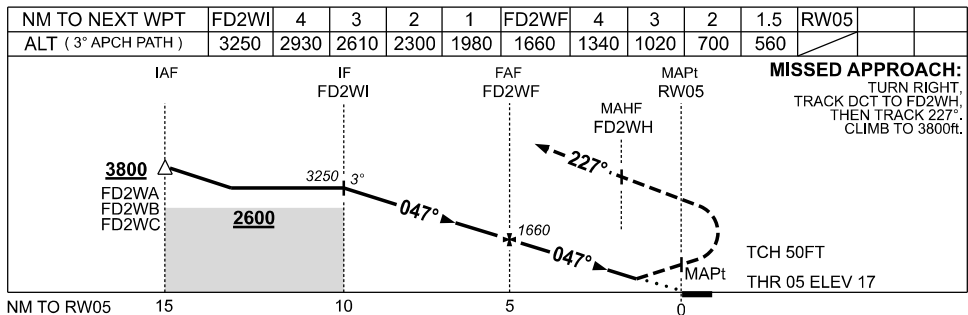
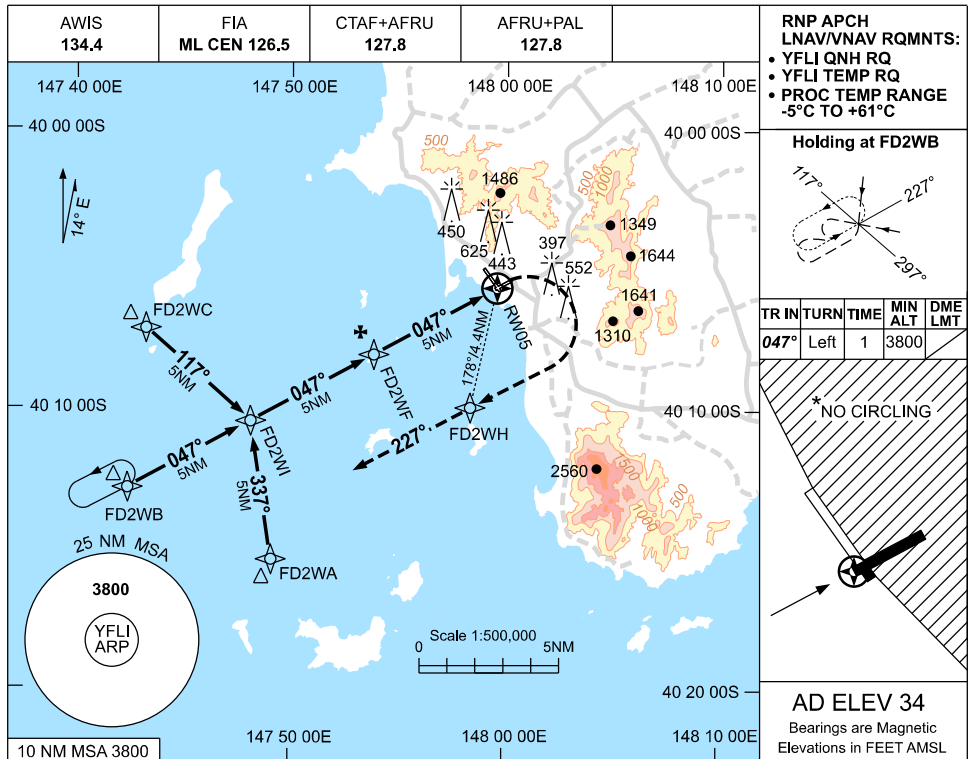
FLIGN01-185

USE QNH

RNP Y RWY 05

27 NOV 2025

FLINDERS ISLAND, TAS (YFLI)



CATEGORY	A	B	C	D
LNAV/VNAV	560(543-3.1)			NOT APPLICABLE
CIRCLING *	1170 (1136-2.4)		1270(1236-4.0)	
ALTERNATE	(1636-4.4)		(1736-6.0)	

- NOTES**
1. MAX IAS:
INITIAL :210KT
MISSED APCH :160KT
TURN :160KT
 - *2. NO CIRCLING EAST OF RWY 14 / 32.
 3. COLOUR: SEE SPEC NOTICES.

Changes: LNAV/VNAV MINIMA, WPT NAMING CONVENTION, Editorial.

FLIGN02-185