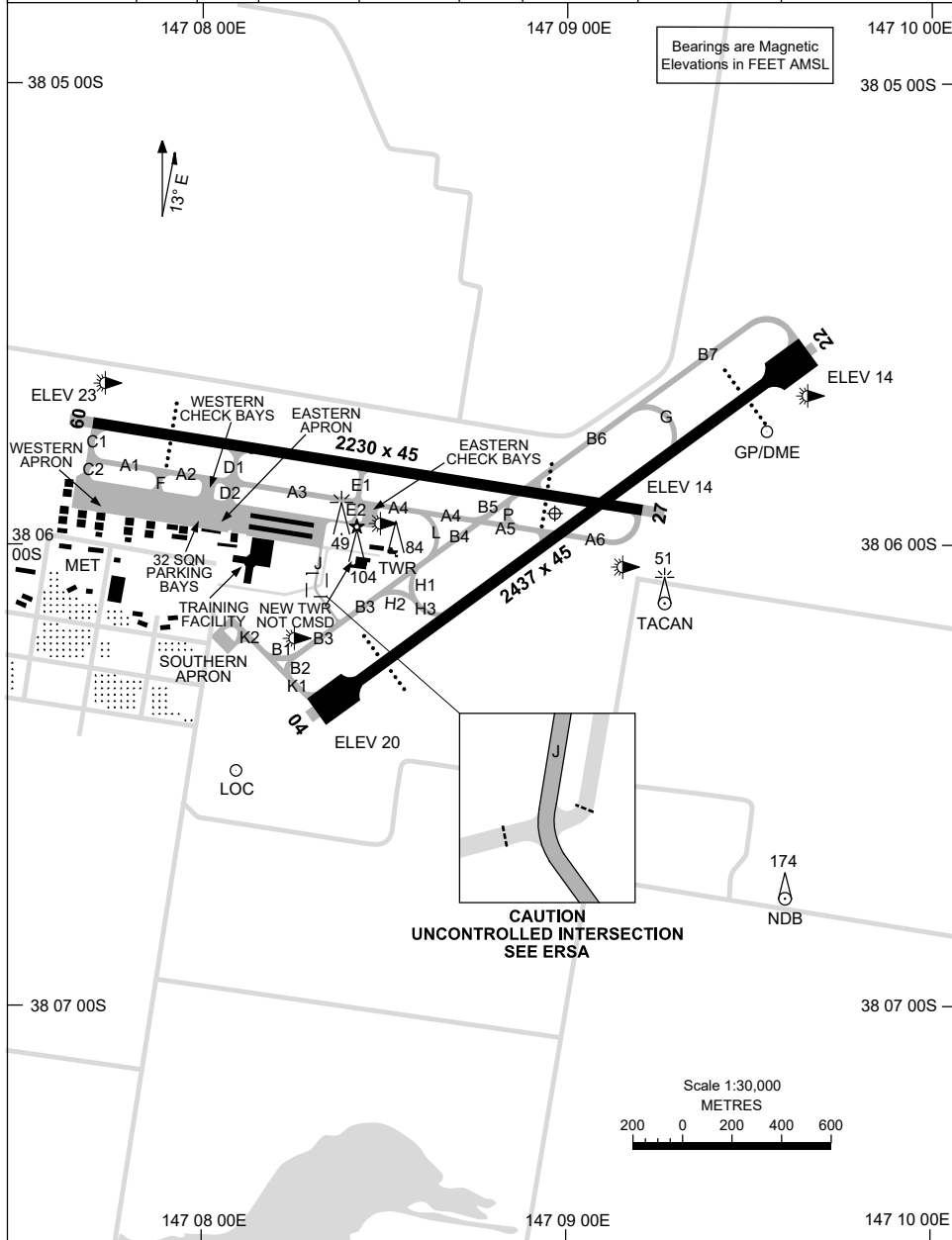


20 MAR 2025

ATIS (AWIS AH) 125.4 350	SMC 127.25	ACD 134.1	TWR 118.3 257.8	APP 123.3 340.2	ACC 135.8	FIA (AH) ML CEN 124.0	CTAF+AFRU (AH) 118.3
-----------------------------	---------------	--------------	--------------------	--------------------	--------------	--------------------------	-------------------------



Changes: AFIS REMOVED, Editorial.

MESAD01-182

20 MAR 2025

ATIS (AWIS AH) 125.4 350	SMC 127.25	ACD 134.1	TWR 118.3 257.8	APP 123.3 340.2	ACC 135.8	FIA (AH) ML CEN 124.0	CTAF+AFRU (AH) 118.3	Bearings are Magnetic Elevations in FEET AMSL
-----------------------------	---------------	--------------	--------------------	--------------------	--------------	--------------------------	-------------------------	--

--	--	--	--	--	--	--	--	--

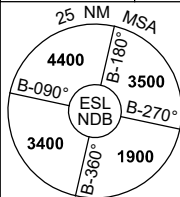
RWY	AERODROME LIGHTING							
		ABN : ALTN W/G 8 SEC TAXIWAY : GREEN CENTRELINE. EASTERN CHECK BAY, WESTERN CHECK BAY LGT: BLUE EDGE AND GREEN CENTRELINE. RL : MAN , SDBY						
<b>09</b> <sup>086</sup>	PAPI 3.0° 51FT MIRL							
<sup>266</sup> <b>27</b>	PAPI 3.0° 51FT MIRL							
<b>04</b> <sup>041</sup>	PAPI 3.0° 49FT MIRL							
<sup>221</sup> <b>22</b>	PAPI 3.0° 49FT MIRL							

NOTES								
1. PAPI RWY 09/27 NIGHT AZIMUTH RESTRICTED TO 9° EITHER SIDE OF RWY CENTRELINE.								

# DME or GNSS ARRIVAL PROCEDURES EAST SALE, VIC (YMES)

20 MAR 2025

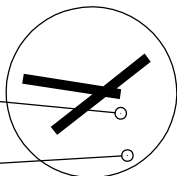
ATIS (AWIS AH) 125.4 350	APP 123.3 340.2	ACC 135.8	TWR 118.3 257.8	FIA (AH) ML CEN 124.0	CTAF+AFRU (AH) 118.3	Bearings are Magnetic Elevations in FEET AMSL
-----------------------------	--------------------	--------------	--------------------	--------------------------	-------------------------	--



**DME USING ESL DME  
REFERENCE WAYPOINT ESL NDB**

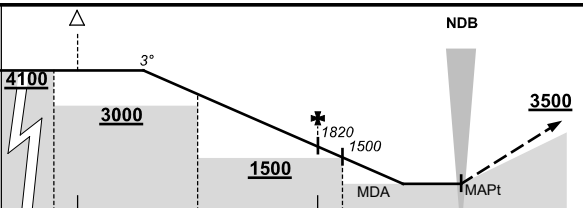
ESL :...  
DME 108.1

ESL :...  
NDB 350



10 NM MSA 1900

AD ELEV 23



**MISSED APPROACH:**  
CLIMB ON TRACK  
TO 3500FT OR AS  
DIRECTED BY ATC.

NM TO ESL NDB or  
DME

25	17	16	11	6	5	0
----	----	----	----	---	---	---

<b>CIRCLING MINIMA</b>	A,B: 670-2.4	C: 830-4.0	D: 1030-5.0
------------------------	--------------	------------	-------------

NM TO NDB or DME	13.2	12	11	10	9	8	7	6	5	4	3.5	2.9	2.4		
ALT (3° APCH PATH)	4100	3730	3410	3090	2770	2460	2140	1820	1500	1180	1030	830	670		

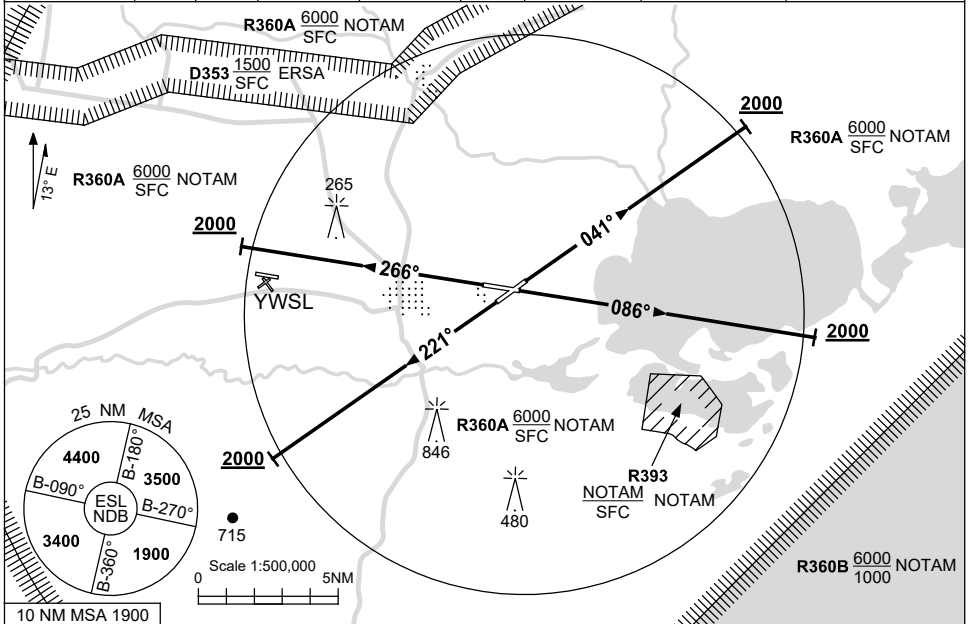
Changes: AFIS, Editorial.



**STANDARD INSTRUMENT DEPARTURES (SID)  
EAST SALE FIVE DEPARTURE (RADAR)  
EAST SALE, VIC (YMES)**

**20 MAR 2025**

ATIS (AWIS AH) 125.4 350	SMC 127.25	ACD 134.1	TWR 118.3 257.8	APP 123.3 340.2	ACC 135.8	FIA (AH) ML CEN 124.0	CTAF+AFRU (AH) 118.3	Bearings are Magnetic Elevations in FEET AMSL
-----------------------------	---------------	--------------	--------------------	--------------------	--------------	--------------------------	-------------------------	--



**EAST SALE FIVE DEPARTURE (RADAR)**

**RWY 04**

- GRAD 3.3%
- Track 041°
- At 2000ft, but not before DER, turn to assigned heading or track

**RWY 09**

- GRAD 3.3%
- Track 086°
- At 2000ft, but not before DER, turn to assigned heading or track

**RWY 22**

- GRAD 3.6% to 1200ft then 3.3%
- Track 221°
- At 2000ft, but not before DER, turn to assigned heading or track

**RWY 27**

- GRAD 3.3%
- Track 266°
- At 2000ft, but not before DER, turn to assigned heading or track

**COMMUNICATIONS FAILURE PROCEDURE**

On recognition of communication failure

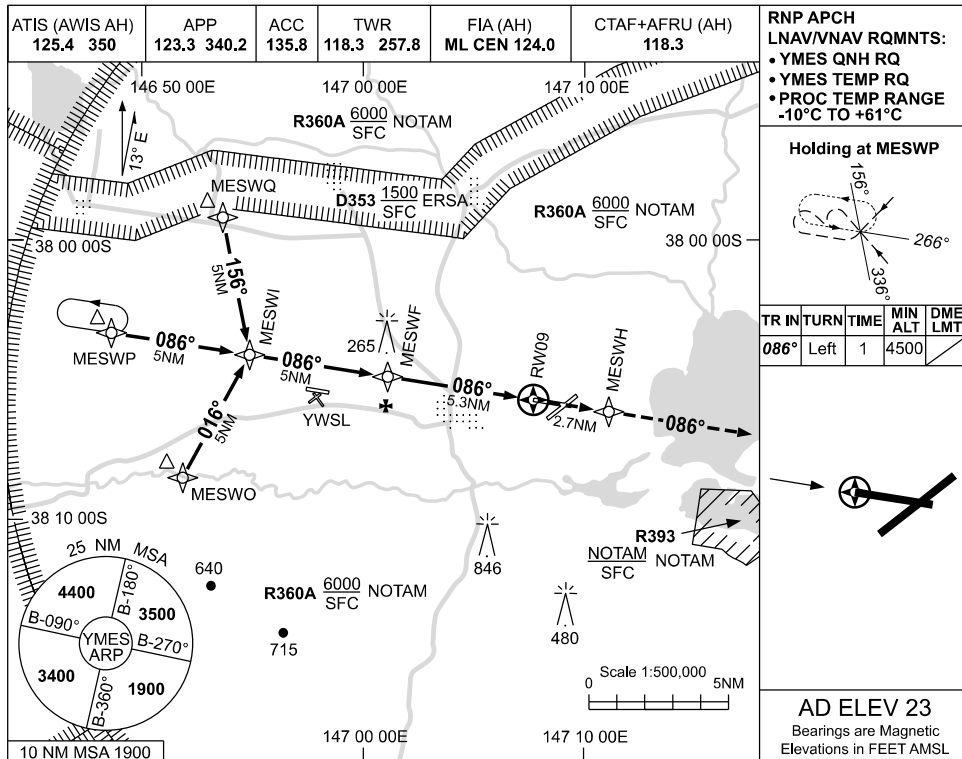
- Squawk 7600
- Maintain last assigned vector for two minutes, and
- CLIMB IF NECESSARY TO MINIMUM SAFE ALTITUDE, to maintain terrain clearance, then
- proceed in accordance with the latest ATC route clearance acknowledged.

USE QNH

RNP RWY 09

**EAST SALE, VIC (YMES)**

19 MAR 2026



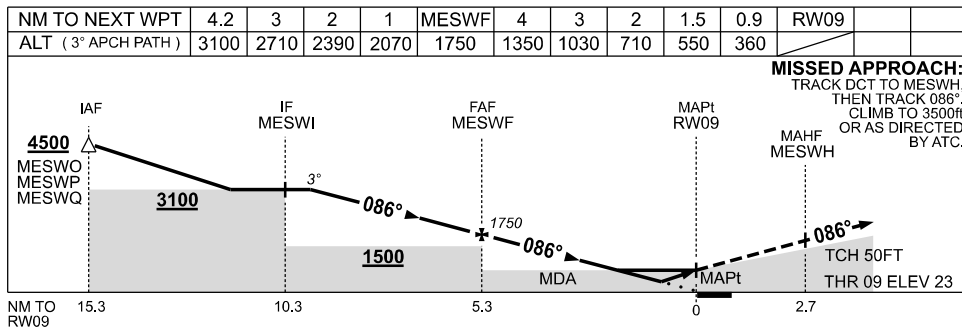
**RNP APCH LNAV/VNAV RQMNTS:**

- YMES QNH RQ
- YMES TEMP RQ
- PROC TEMP RANGE -10°C TO +61°C

**Holding at MESWP**

TR IN	TURN	TIME	MIN ALT	DME LMT
086°	Left	1	4500	

**AD ELEV 23**  
 Bearings are Magnetic  
 Elevations in FEET AMSL



**MISSED APPROACH:**  
 TRACK DCT TO MESWH,  
 THEN TRACK 086°  
 CLIMB TO 3500ft  
 OR AS DIRECTED  
 BY ATC.

**NOTES**

CATEGORY	A	B	C	D
LNAV/VNAV		360 (337-1.9)		
LNAV		560 (537-3.0)		
CIRCLING	630 (607-2.4)	830 (807-4.0)	1030 (1007-5.0)	
ALTERNATE	(1107-4.4)	(1307-6.0)	(1507-7.0)	

- MAX IAS:  
INITIAL : 210KT.
- HOLDING NOT CONTAINED WITHIN EAST SALE RESTD AREAS.

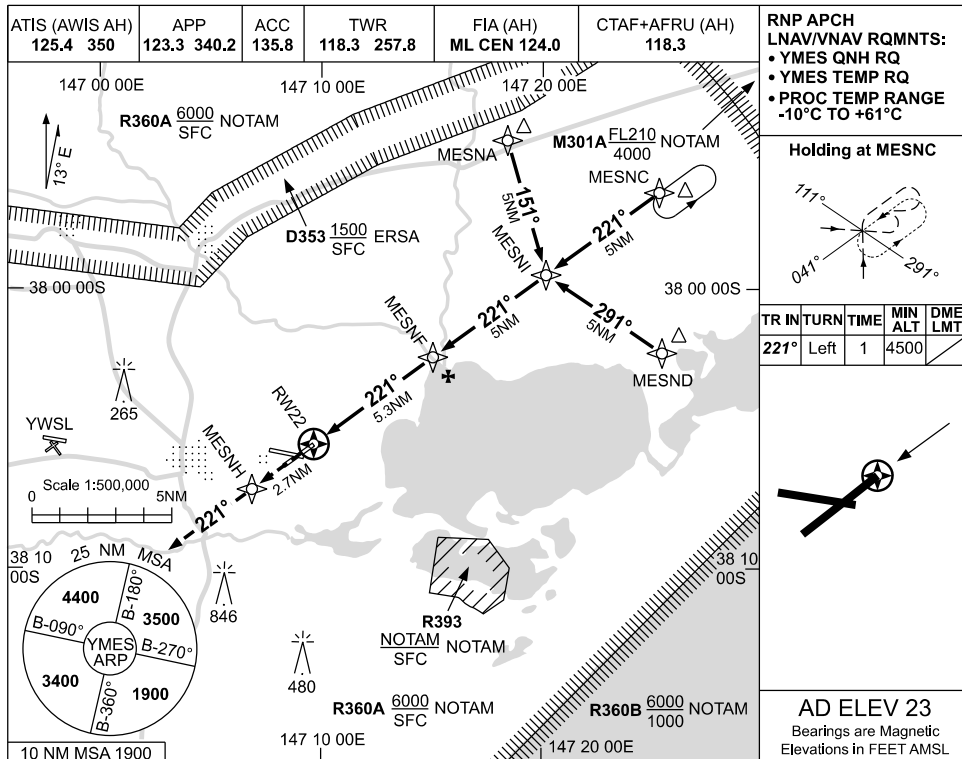
Changes: MINIMA, Editorial.

MESGN01-186

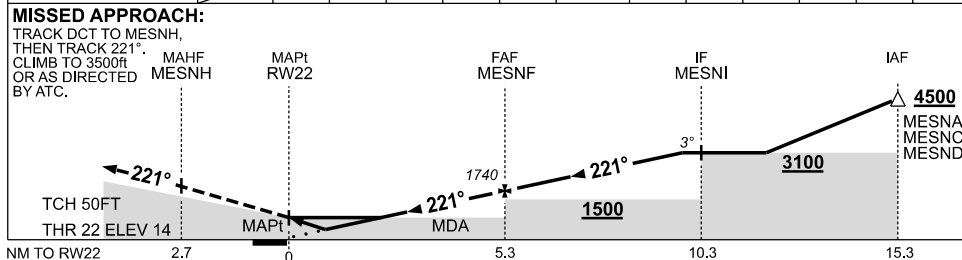
USE QNH

RNP RWY 22  
EAST SALE, VIC (YMES)

19 MAR 2026



NM TO NEXT WPT	RW22	0.9	1.5	2	3	4	MESNF	1	2	3	4.3		
ALT (3° APCH PATH)		360	550	700	1020	1340	1740	2060	2380	2700	3100		



CATEGORY	A	B	C	D
LNAV/VNAV	360 (346-1.9)			
LNAV	550 (536-3.0)			
CIRCLING	630 (607-2.4)	830 (807-4.0)	1030 (1007-5.0)	
ALTERNATE	(1107-4.4)	(1307-6.0)	(1507-7.0)	

**NOTES**  
 1. MAX IAS: INITIAL : 210KT.

Changes: MINIMA, Editorial.

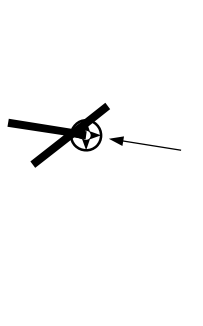
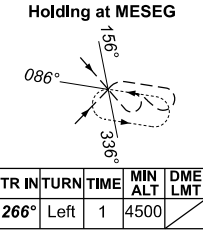
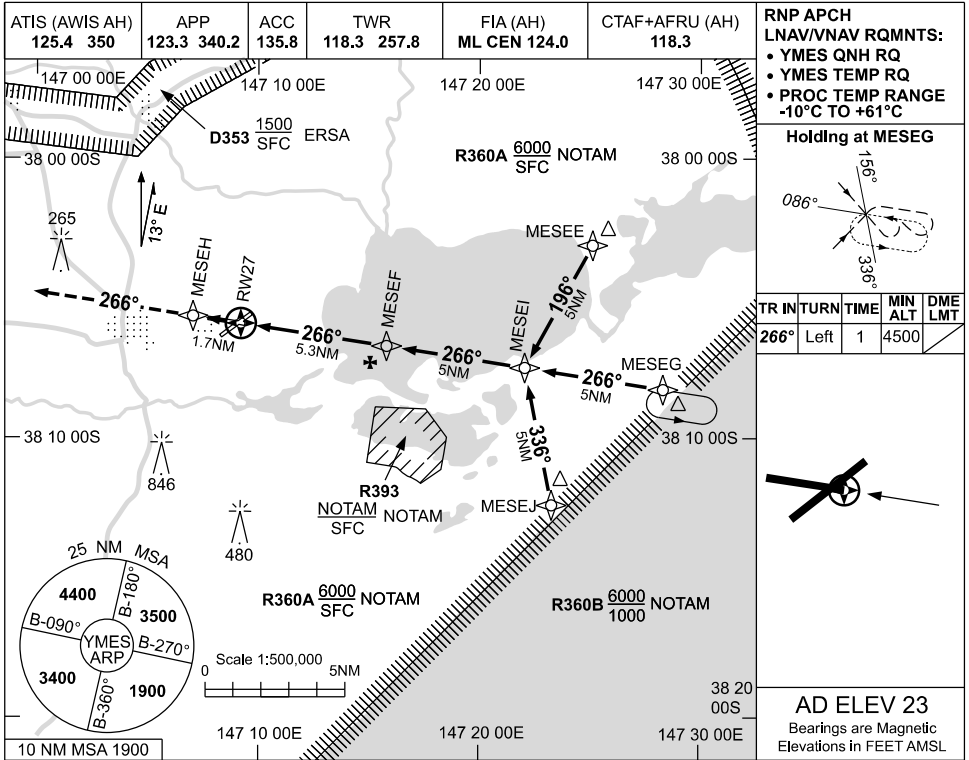
MESGN02-186

USE QNH

RNP RWY 27

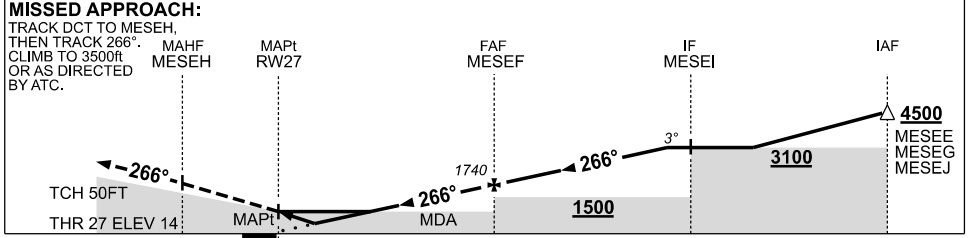
EAST SALE, VIC (YMES)

19 MAR 2026



**AD ELEV 23**  
 Bearings are Magnetic  
 Elevations in FEET AMSL

NM TO NEXT WPT	RW27	0.9	1.5	2	3	4	MESEF	1	2	3	4.3		
ALT (3° APCH PATH)		360	550	700	1020	1340	1740	2060	2380	2700	3100		



**NOTES**  
 1. MAX IAS: INITIAL : 210KT.

CATEGORY	A	B	C	D
LNAV/VNAV		360 (346-1.9)		
LNAV		550 (536-3.0)		
CIRCLING	630 (607-2.4)	830 (807-4.0)		1030 (1007-5.0)
ALTERNATE	(1107-4.4)		(1307-6.0)	(1507-7.0)

Changes: MINIMA, Editorial.

MESGN03-186