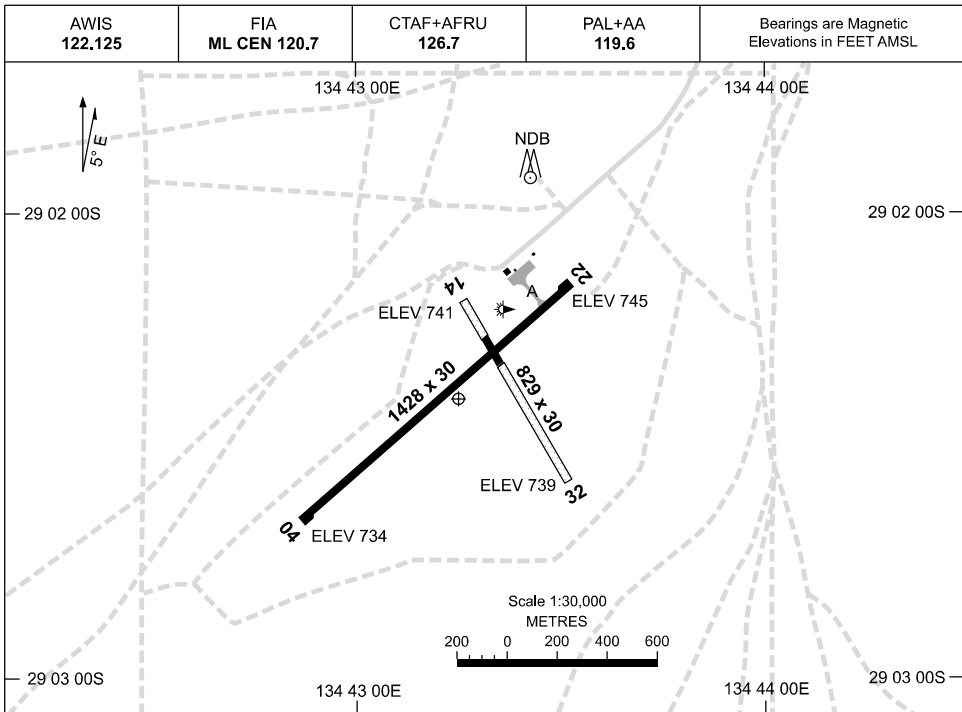


27 NOV 2025

AD ELEV 745
29 02 24S 134 43 15E

AERODROME CHART
COOBER PEDY, SA (YCBP)



AERODROME LIGHTING	
RWY	TAXIWAY : BLUE EDGE RL : PAL+AA 119.6, PTBL IN EMERG
04 <small>043</small>	LIRL
<small>223</small> 22	LIRL
14 <small>145</small>	NIL
<small>325</small> 32	NIL

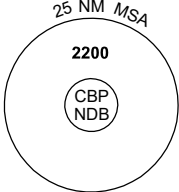
NOTES

1. AWIS REQUIRES ONE ONE-SECOND PULSE TO ACTIVATE.
2. FIA FREQ 120.7 AVBL 7,000FT.

GNSS ARRIVAL PROCEDURES COOBER PEDY, SA (YCBP)

16 JUN 2022

AWIS 122.125	FIA ML CEN 120.7	CTAF+AFRU 126.7	PAL+AA 119.6		Bearings are Magnetic Elevations in FEET AMSL
-----------------	---------------------	--------------------	-----------------	--	--

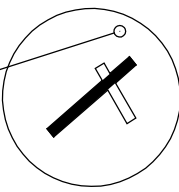


25 NM MSA

2200

CBP NDB

REFERENCE WAYPOINT CBP NDB




CBP NDB 341

10 NM MSA 2200

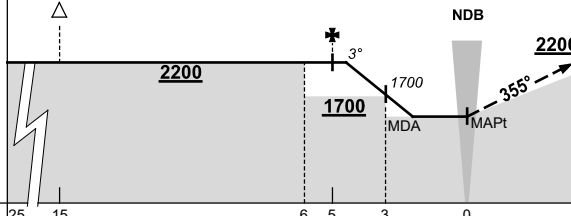
AD ELEV 745

SECTOR A



133° 174°

CBP NDB



2200

1700

1700

1700

MDA

MAPt

NDB

3°

355°

2200


MISSED APPROACH:

TURN LEFT,
TRACK 355°.
CLIMB TO 2200FT.

MAX IAS: 190KT UNTIL
ESTABLISHED ON 355°

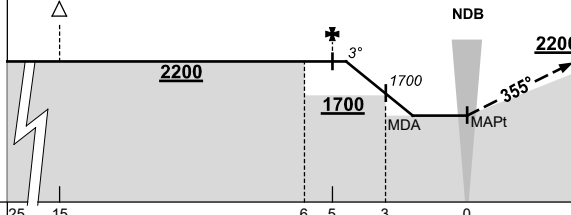
CIRCLING MINIMA	A,B: 1390-2.4	C: 1620-4.0	D: N/A																	
NM TO CBP NDB	4.6	4	3	2.7	2															
ALT (3° APCH PATH)	2200	2020	1700	1620	1390															

SECTOR B



174° 205°

CBP NDB



2200

1700

1700

1700

MDA

MAPt

NDB

3°

355°

2200

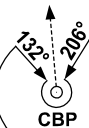
MISSED APPROACH:

TURN RIGHT,
TRACK 355°.
CLIMB TO 2200FT.

MAX IAS: 190KT UNTIL
ESTABLISHED ON 355°

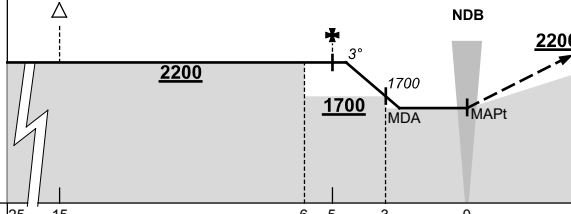
CIRCLING MINIMA	A,B: 1390-2.4	C: 1620-4.0	D: N/A																	
NM TO CBP NDB	4.6	4	3	2.7	2															
ALT (3° APCH PATH)	2200	2020	1700	1620	1390															

SECTOR C



133° 200°

CBP NDB



2200

1700

1700

1700

MDA

MAPt

NDB

3°

355°

2200

MISSED APPROACH:

CLIMB ON TRACK TO
2200FT.

PROC NOT AVBL
WHEN R246A,B
ACTIVE.

CIRCLING MINIMA	A,B: 1530-2.4	C: 1620-4.0	D: N/A																	
NM TO CBP NDB	4.6	4	3	2.7	2.5															
ALT (3° APCH PATH)	2200	2020	1700	1620	1530															

Changes: SECTOR C MINIMA, DIST/ALT TABLE, PAL+AA.

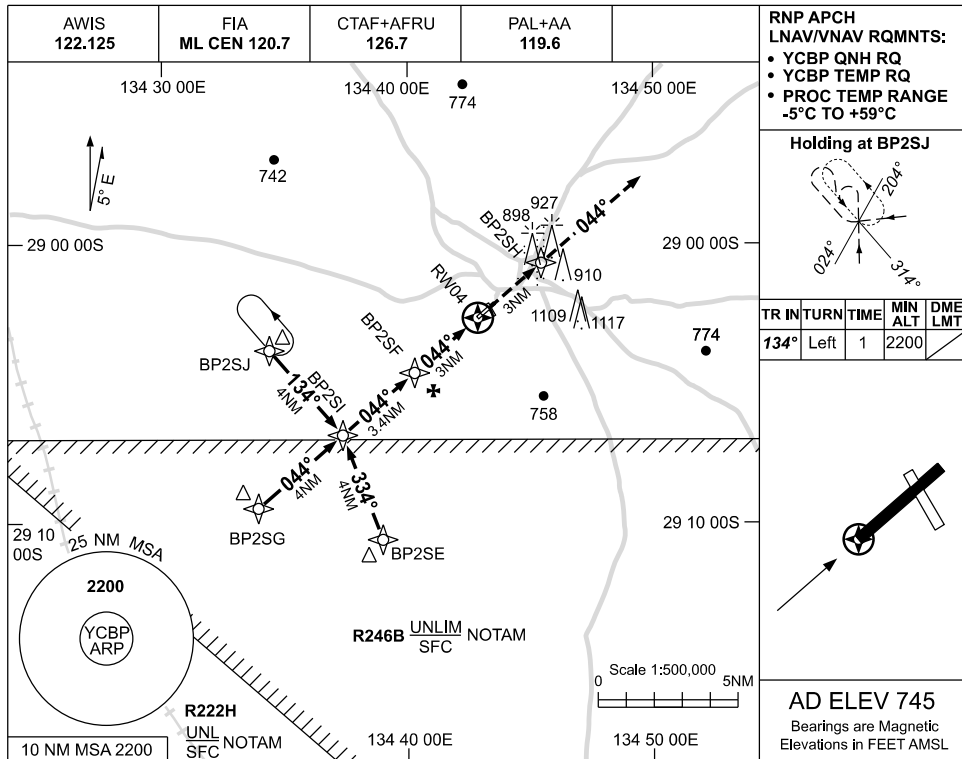
CBPDG01-171

USE QNH

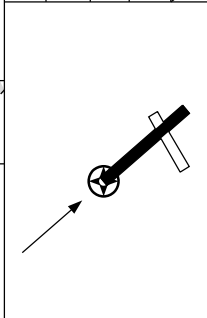
RNP RWY 04

COOBER PEDY, SA (YCBP)

19 MAR 2026

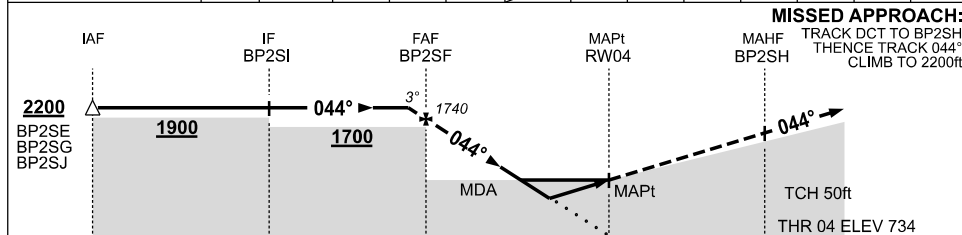


TR	IN	TURN	TIME	MIN ALT	DME LMT
134°	Left	1	2200		



AD ELEV 745
Bearings are Magnetic
Elevations in FEET AMSL

NM TO NEXT WPT	1.4	BP2SF	2	1.5	0.9	RW04					
ALT (3° APCH PATH)	2200	1740	1420	1270	1080						



MISSED APPROACH:
TRACK DCT TO BP2SH,
THENCE TRACK 044°,
CLIMB TO 2200ft.

TCH 50ft
THR 04 ELEV 734

NOTES

CATEGORY	A	B	C	D
LNAV/VNAV		1080 (346-1.9)		NOT APPLICABLE
LNAV		1270 (536-3.0)		
CIRCLING	1390 (645-2.4)		1620 (875-4.0)	
ALTERNATE	(1145-4.4)		(1375-6.0)	

- MAX IAS:
INITIAL : 180KT.
- PROC NOT AVBL
WHEN R246B ACTIVE.

Changes: OBST AMD, Editorial.

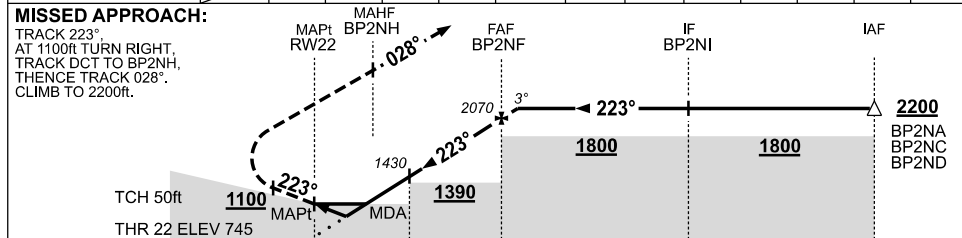
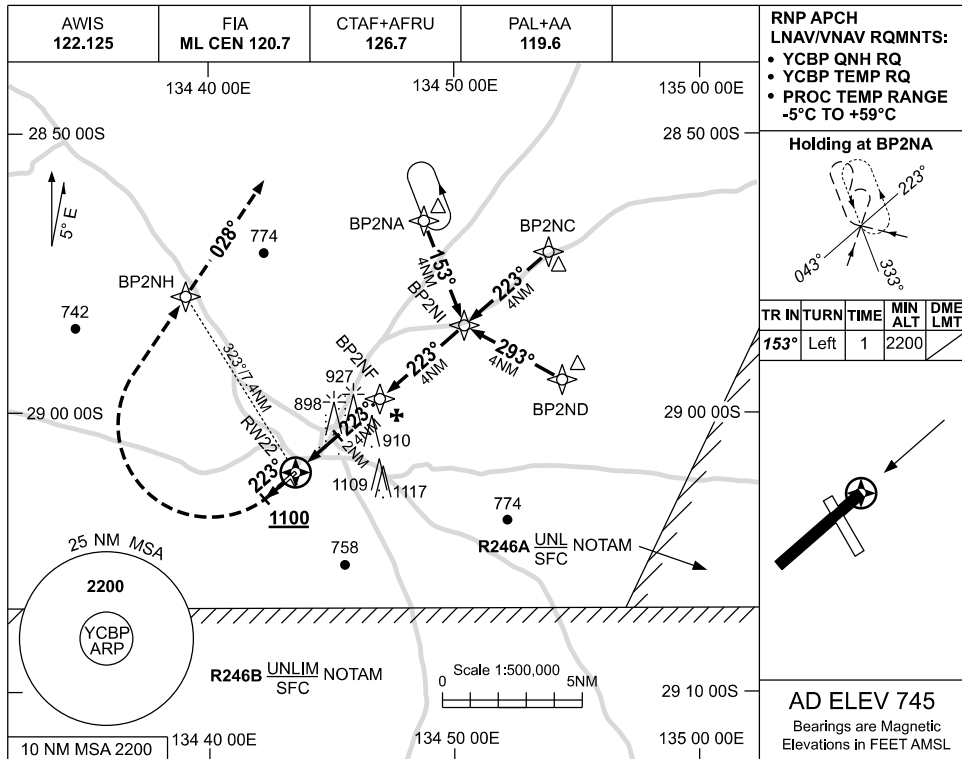
CBPGN01-186

USE QNH

RNP RWY 22

COOBER PEDY, SA (YCBP)

19 MAR 2026



NOTES

- MAX IAS: INITIAL : 210KT.

CATEGORY	A	B	C	D
LNAV/VNAV		1080 (335-1.9)		NOT APPLICABLE
LNAV		1270 (525-3.0)		
CIRCLING	1390 (645-2.4)		1620 (875-4.0)	
ALTERNATE	(1145-4.4)		(1375-6.0)	

Changes: OBST AMD, Editorial.

CBPGN02-186

