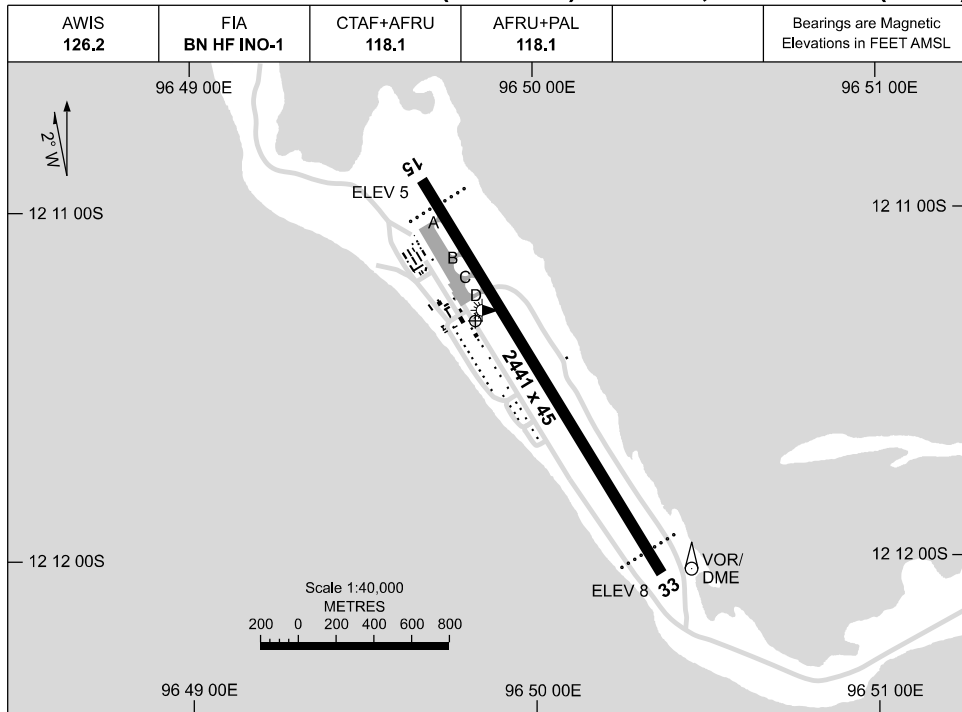


AD ELEV 10
12 11 19S 96 49 50E

AERODROME CHART

27 NOV 2025

COCOS (KEELING) ISLANDS, AUSTRALIA (YPCC)



	AERODROME LIGHTING
RWY	TAXIWAY : BLUE EDGE TWY C AND D ONLY. RL : AFRU+PAL 118.1, SDBY (13 SEC), PTBL (EMERG ONLY, 90 MIN PN)
15 <small>151</small>	PAPI 3.0° 53FT LIRL PTBL
<small>331</small> 33	PAPI 3.0° 53FT LIRL PTBL

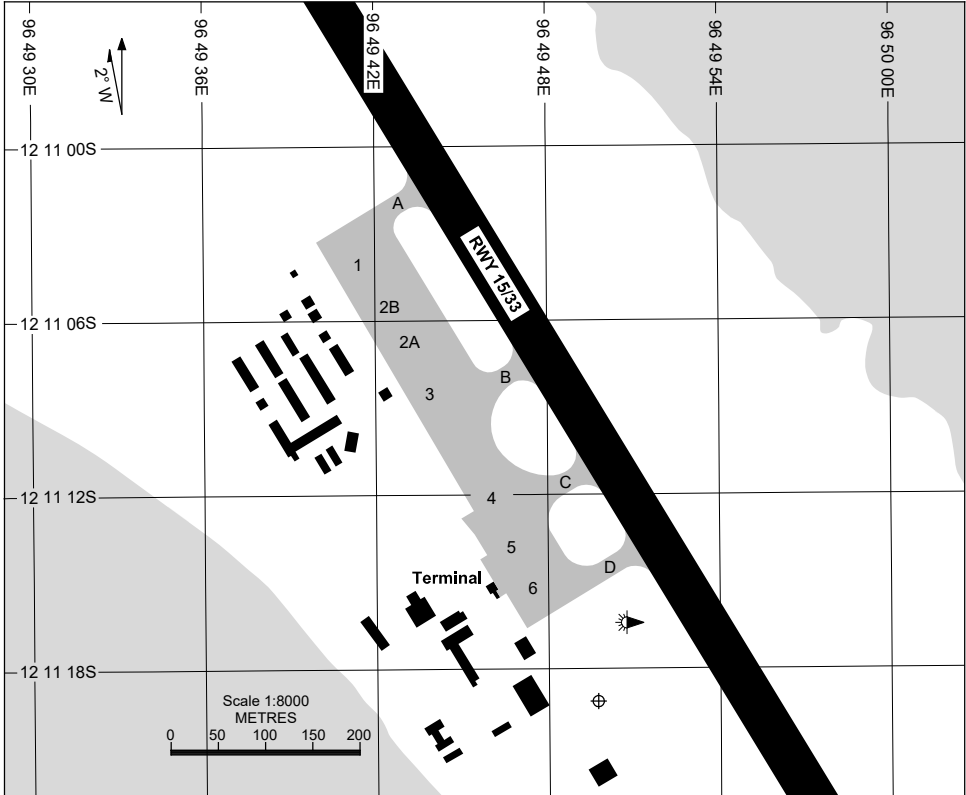
NOTES

Changes: TWY LIGHTING NOTE.

PCCAD01-185

20 MAR 2025

COCOS (KEELING) ISLANDS, AUSTRALIA (YPCC)



PARKING POSITION INFORMATION

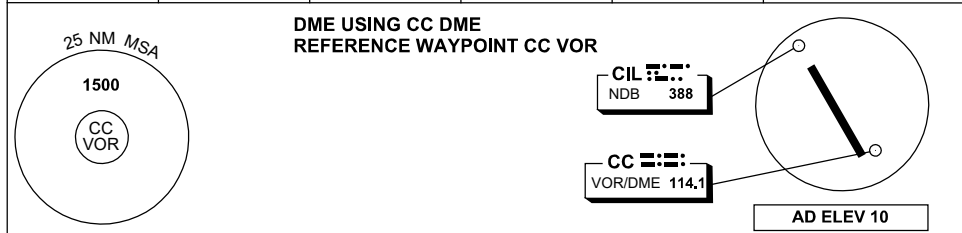
STAND	CO-ORDINATES	ELEV (ft)	CAPACITY	FUEL
1	12 11 04.70S 96 49 41.66E	9	B738/C130/P3	TANKER
2A	12 11 07.40S 96 49 43.66E	9	B738/C130/P3	TANKER
2B	12 11 06.29S 96 49 42.98E	9	B738/C130/P3	TANKER
3	12 11 09.21S 96 49 44.49E	9	B738/C130/P3	TANKER
4	12 11 12.10S 96 49 46.10E	9	DH8C	TANKER
5	12 11 14.57S 96 49 47.38E	9	B738	TANKER
6	12 11 15.99S 96 49 48.25E	9	B738	TANKER

Changes: BAYS 4 -6 UPDATED, Editorial.

DME or GNSS ARRIVAL PROCEDURES COCOS (KEELING) ISLANDS, AUSTRALIA (YPCC)

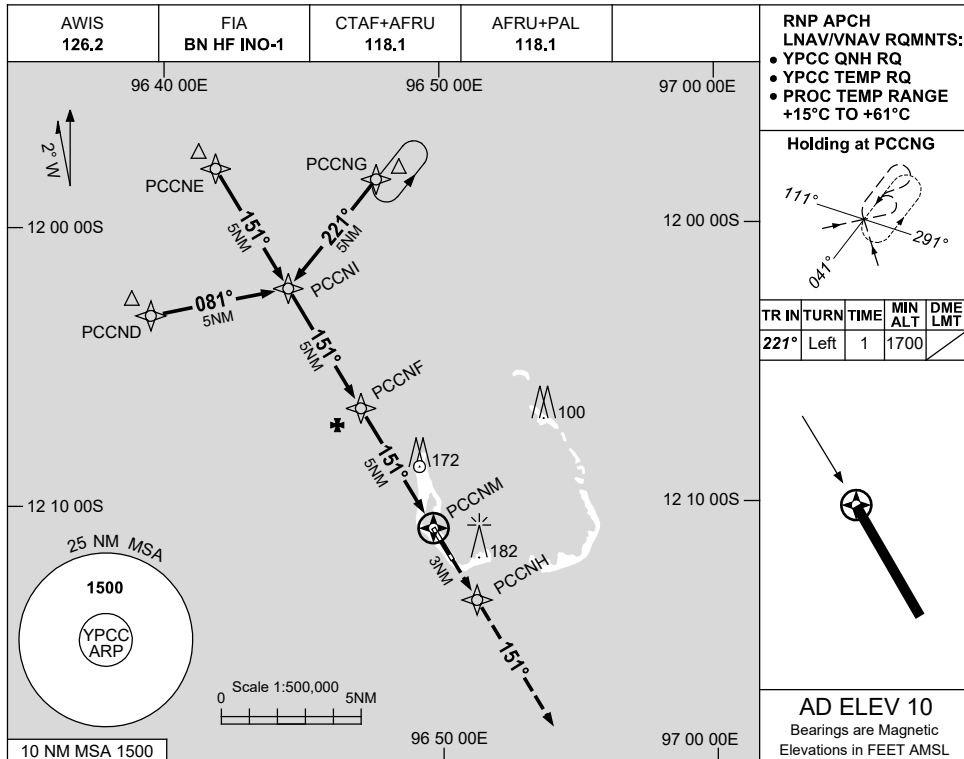
5 NOV 2020

AWIS 126.2	FIA BN HF INO-1	CTAF+AFRU 118.1	AFRU+PAL 118.1		Bearings are Magnetic Elevations in FEET AMSL
---------------	--------------------	--------------------	-------------------	--	--

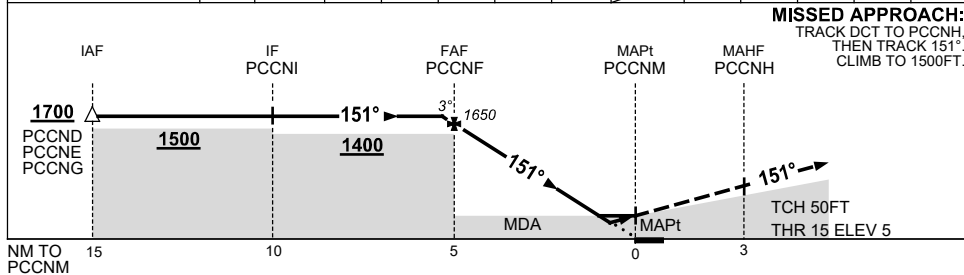


ALL ROUTES TO CC VOR or CIL NDB	△	*	3°	VOR or NDB	1500	<p>MISSED APPROACH: CLIMB ON TRACK TO 1500FT.</p>
	1500	MDA	MAPt	MAPt	1500	
NM TO CC VOR	25	11	6	0		
CIRCLING MINIMA				A,B: 610-2.4	C: 710-4.0	D: 800-5.0
NM TO CC VOR	5.5	5	4	3.3	3	2.7
ALT (3° APCH PATH)	1500	1360	1040	800	710	610

USE QNH **RNP RWY 15**
7 SEP 2023 **COCOS (KEELING) ISLANDS, AUSTRALIA (YPCC)**



NM TO NEXT WPT	0.2	PCCNF	4	3	2	1.6	1	PCCNM					
ALT (3° APCH PATH)	1700	1650	1330	1010	690	550	370						



NOTES

CATEGORY	A	B	C	D
LNAV/VNAV	370 (365-2.0)			
LNAV	550 (540-3.1)			
CIRCLING	610 (600-2.4)	710 (700-4.0)	800 (790-5.0)	
ALTERNATE	(1100-4.4)		(1200-6.0) (1290-7.0)	

1. MAX IAS:
INITIAL : 210KT.

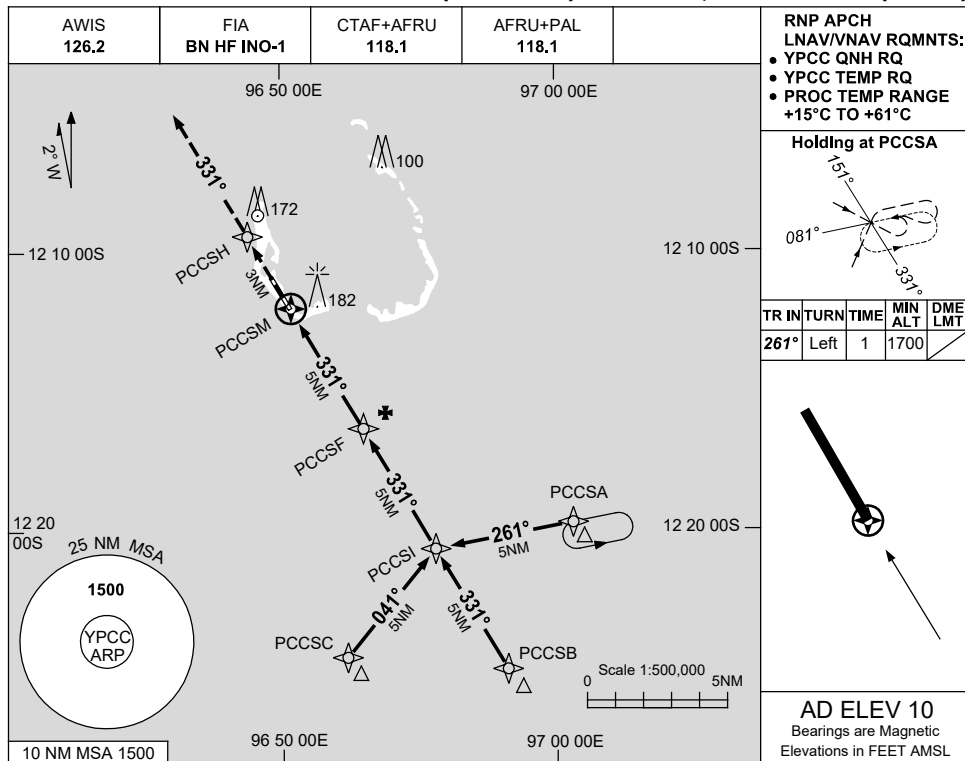
Changes: CHART TITLE, PBN SPECIFICATION BOX, Editorial.

PCCGN01-176

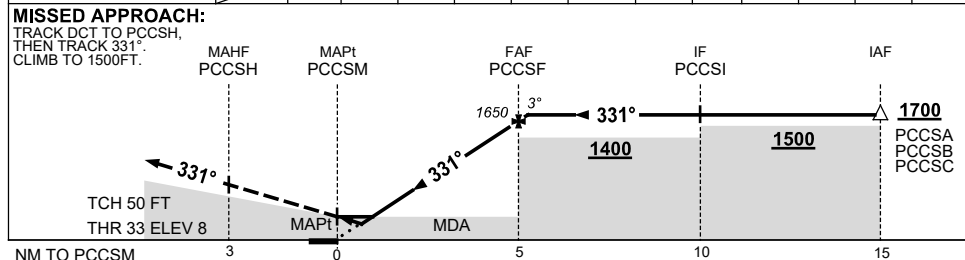
USE QNH
COCOS (KEELING) ISLANDS, AUSTRALIA (YPCC)

RNP RWY 33

7 SEP 2023



NM TO NEXT WPT	PCCSM	1	1.6	2	3	4	PCCSF	0.2				
ALT (3° APCH PATH)		370	550	690	1010	1330	1650	1700				



NOTES

CATEGORY	A	B	C	D
LNAV/VNAV	370 (362-2.0)			
LNAV	550 (540-3.1)			
CIRCLING	610 (600-2.4)		710 (700-4.0)	800 (790-5.0)
ALTERNATE	(1100-4.4)		(1200-6.0) (1290-7.0)	

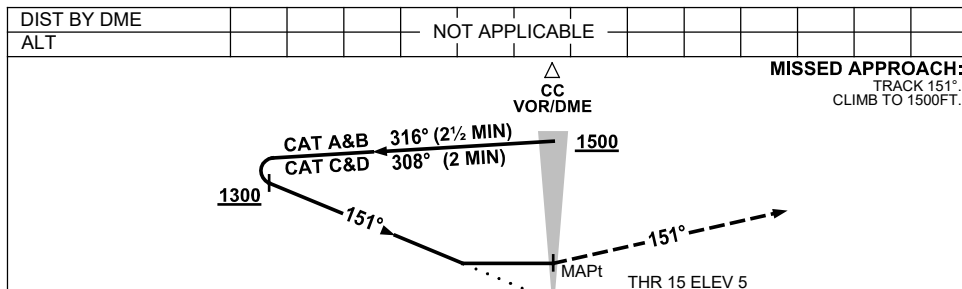
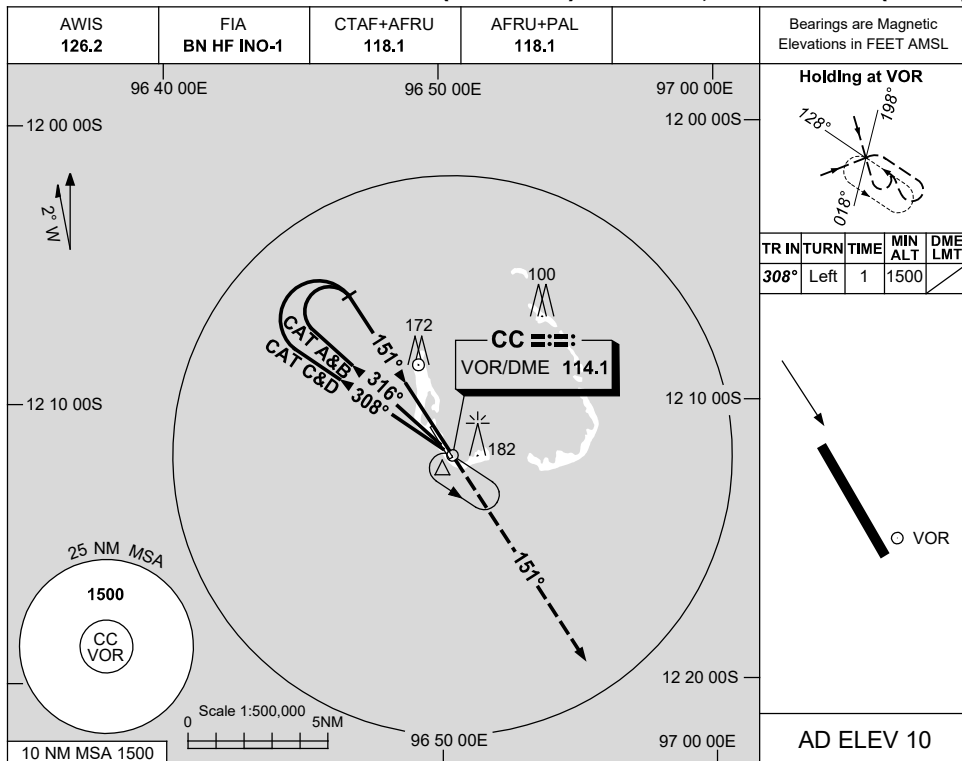
1. MAX IAS:
INITIAL : 210KT.

Changes: CHART TITLE, PBN SPECIFICATION BOX, Editorial.

PCCGN02-176

USE QNH VOR-Y RWY 15
COCOS (KEELING) ISLANDS, AUSTRALIA (YPCC)

5 NOV 2020



NOTES

CATEGORY	A	B	C	D
S-I VOR	600 (590-3.4)			
CIRCLING	610 (600-2.4)	710 (700-4.0)	800 (790-5.0)	
ALTERNATE	(1100-4.4)	(1200-6.0)	(1290-7.0)	

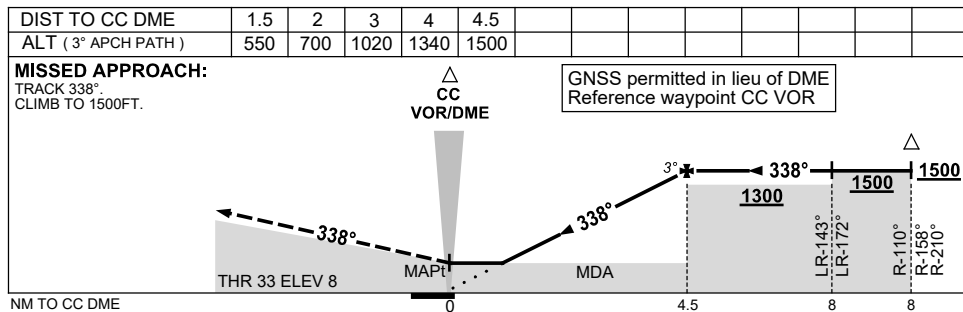
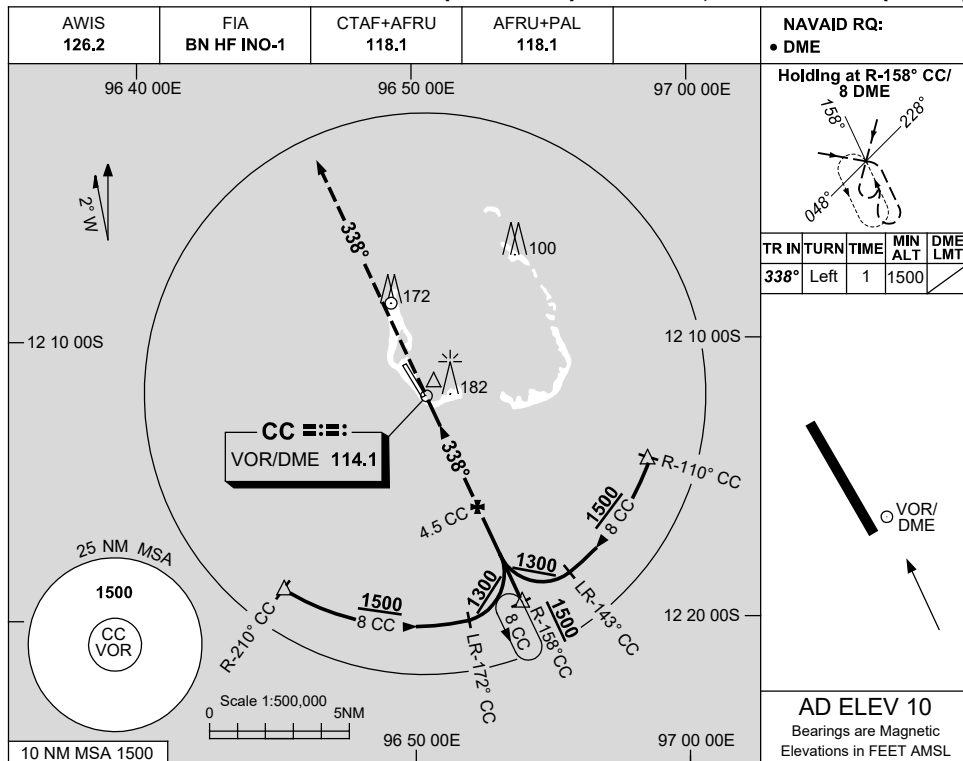
1. MAX IAS:
INITIAL : 210KT.

Changes: AD NAME, COORD FMT.

PCCV001-165

USE QNH **VOR-Z RWY 33**
COCOS (KEELING) ISLANDS, AUSTRALIA (YPCC)

5 NOV 2020



NOTES

CATEGORY	A	B	C	D
S-I VOR/DME	550 (540-3.1)			
CIRCLING	610 (600-2.4)	710 (700-4.0)	800 (790-5.0)	
ALTERNATE	(1100-4.4)	(1200-6.0)	(1290-7.0)	

1. MAX IAS:
INITIAL : 210KT.

Changes: AD NAME, COORD FMT, Editorial.

PCCVO04-165