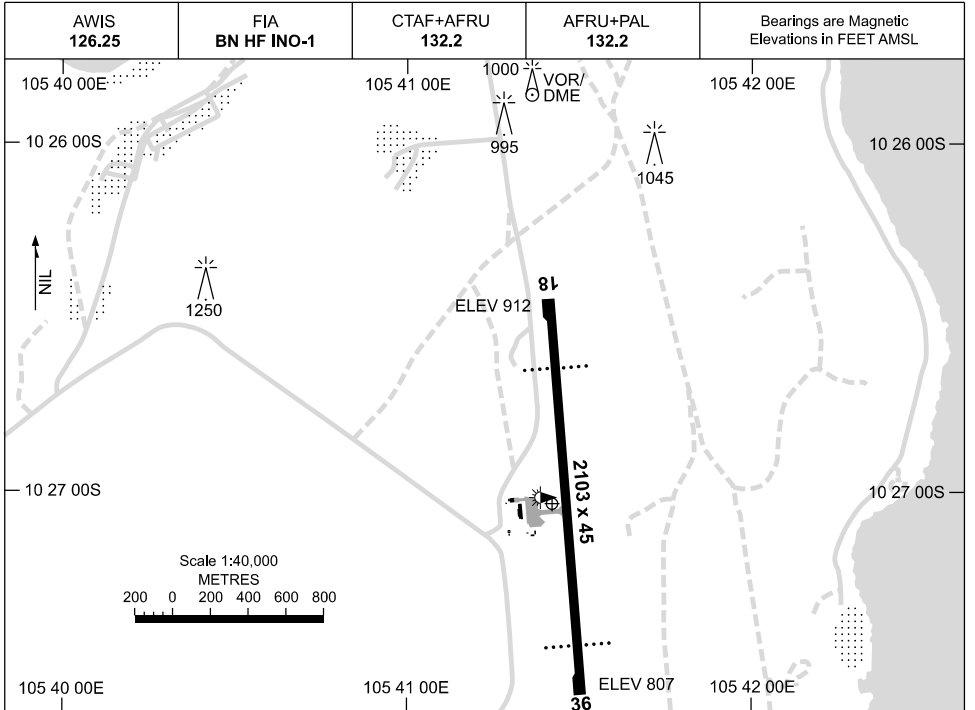


19 MAR 2026

AD ELEV 913  
10 27 02S 105 41 25E

**AERODROME CHART**  
**CHRISTMAS ISLAND, AUSTRALIA (YPXM)**



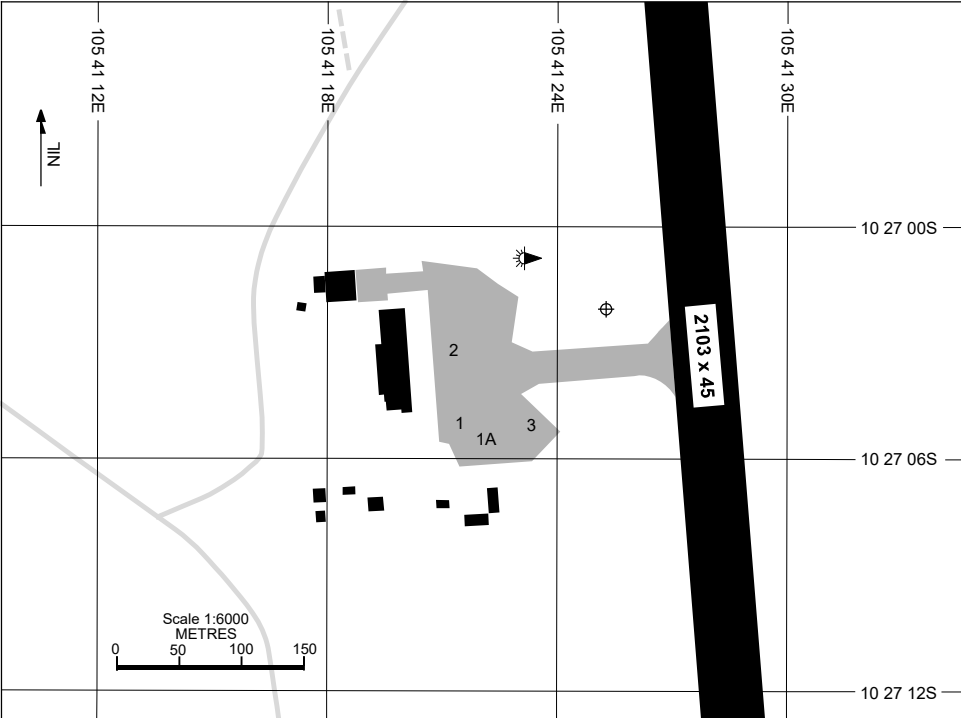
<b>AERODROME LIGHTING</b>	
<b>RWY</b>	TAXIWAY : BLUE EDGE RL : AFRU+PAL 132.2 , SDBY (15 SEC) , PTBL (EMERG ONLY, 90 MIN PN)
<b>18</b> <sup>175</sup>	PAPI 3.3° 53FT LIRL PTBL
<sup>355</sup> <b>36</b>	PAPI 3.0° 53FT LIRL PTBL

**NOTES**

Changes: REMOVED "MAN ON REQ".

PXMAD01-186

20 MAR 2025



PARKING POSITION INFORMATION

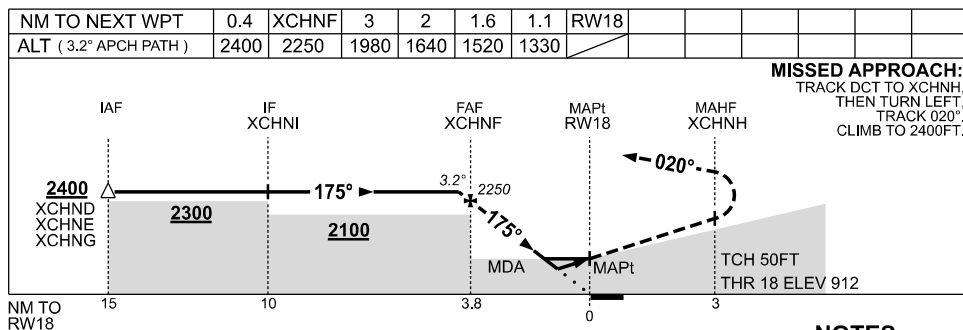
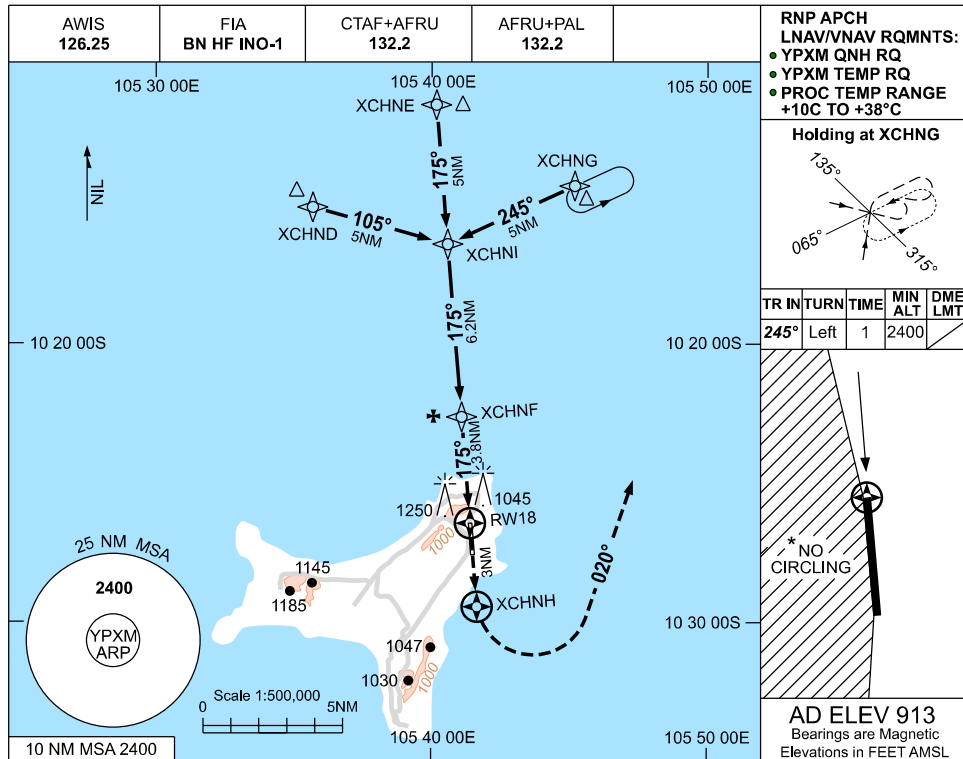
STAND	CO-ORDINATES	ELEV (ft)	CAPACITY	HYDRANT FUEL	DOCKING SYSTEM
1	10 27 05.08S 105 41 21.48E	857	B738	HYDRANT	MARSHALLER
1A	10 27 05.49S 105 41 22.15E	853	C17	NIL	MARSHALLER
2	10 27 03.19S 105 41 21.33E	856	B738	HYDRANT	MARSHALLER
3	10 27 05.12S 105 41 23.34E	853	DH8C	NIL	MARSHALLER

Changes: NEW CHART.

PXMAP01-182

**USE QNH** **RNP RWY 18**  
**CHRISTMAS ISLAND, AUSTRALIA (YPXM)**

**27 NOV 2025**



CATEGORY	A	B	C	D
LNAV/VNAV	<b>1330 (418-2.2)</b>			
LNAV	<b>1520 (607-3.2)</b>			
CIRCLING *	<b>1650 (737-2.4)</b>	<b>1750 (837-4.0)</b>	<b>1750 (837-5.0)</b>	
ALTERNATE	(1237-4.4)	(1337-6.0)	(1337-7.0)	

- NOTES**
1. MAX IAS:  
INITIAL : 210KT.
  2. NO CIRCLING WEST OF RWY 18/36.
  3. COLOUR: SEE SPEC NOTICES.

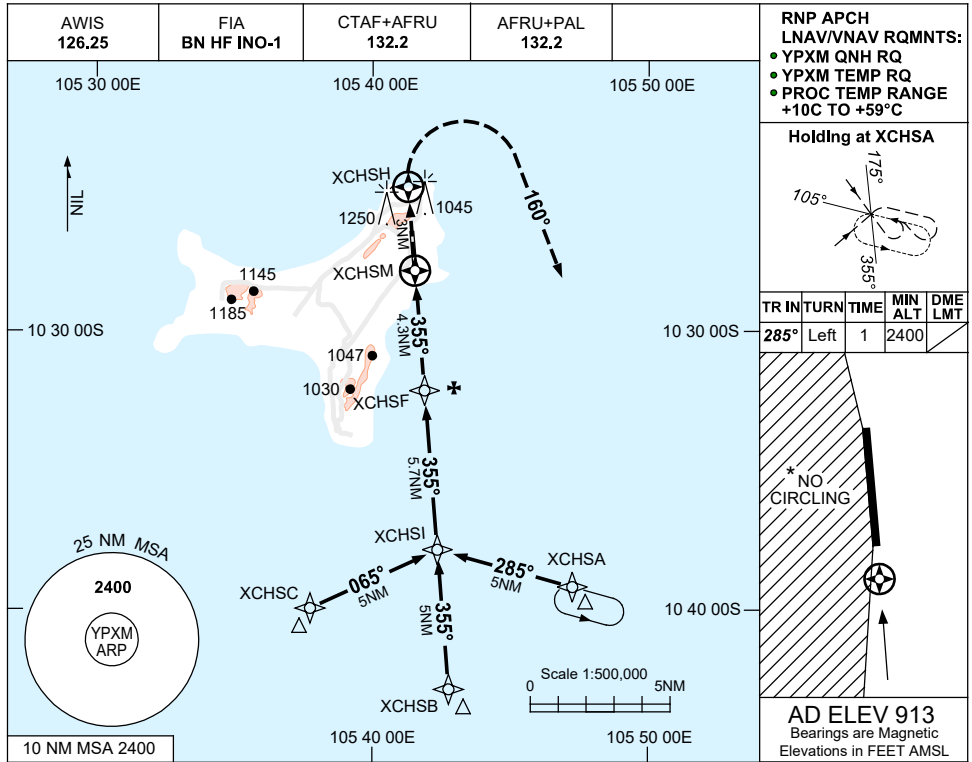
Changes: Editorial.

PXMGN01-185

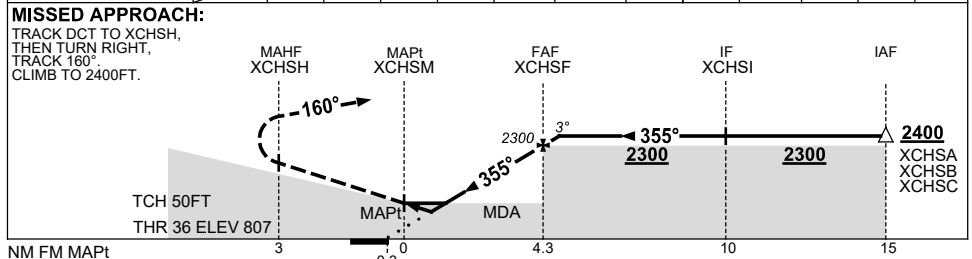
**USE QNH**  
**CHRISTMAS ISLAND, AUSTRALIA (YPXM)**

RNP RWY 36

7 SEP 2023



NM TO NEXT WPT	XCHSM	0.8	1.4	2	3	4	XCHSF	0.3					
ALT (3° APCH PATH)		1200	1400	1590	1900	2220	2300	2400					



**NOTES**

CATEGORY	A	B	C	D
LNAV/VNAV		<b>1200 (393-2.2)</b>		
LNAV		<b>1400 (593-3.4)</b>		
CIRCLING*	<b>1650 (737-2.4)</b>	<b>1750 (837-4.0)</b>	<b>1750 (837-5.0)</b>	
ALTERNATE	(1237-4.4)	(1337-6.0)	(1337-7.0)	

1. MAX IAS: INITIAL : 210KT.
- \* 2. NO CIRCLING WEST OF RWY 18/36.
3. COLOUR: SEE SPEC NOTICES.

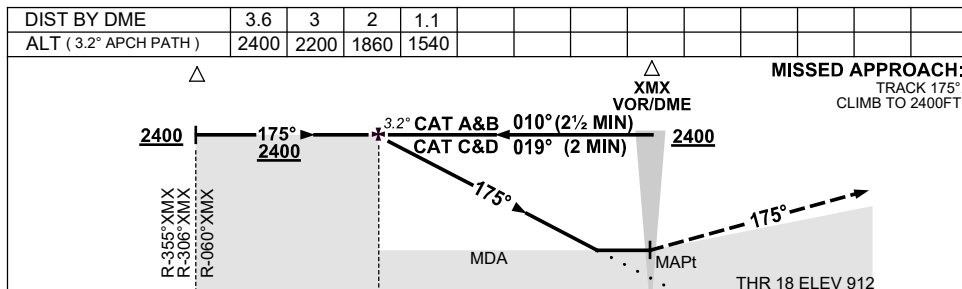
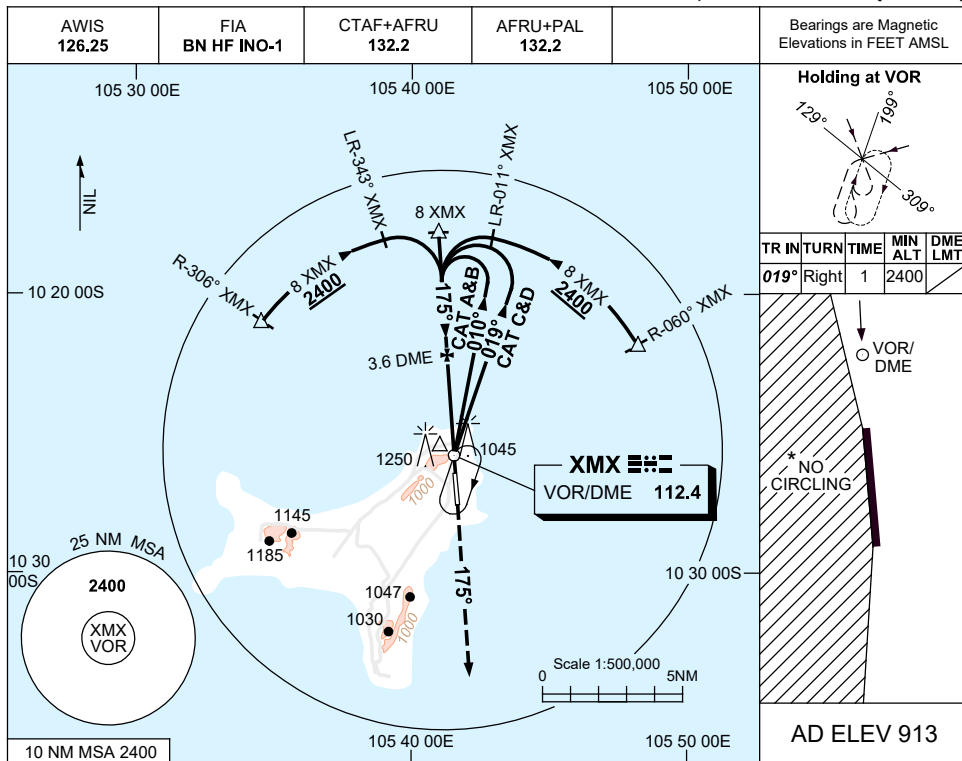
Changes: CHART TITLE, PBN SPECIFICATION BOX, Editorial.

PXMG02-176

**USE QNH**  
**CHRISTMAS ISLAND, AUSTRALIA (YPXM)**

VOR RWY 18

16 JUN 2022



**NOTES**

1. MAX IAS:  
INITIAL : 210KT.
- \*2. NO CIRCLING WEST OF RWY 18/36.
3. COLOUR: SEE SPEC NOTICES.

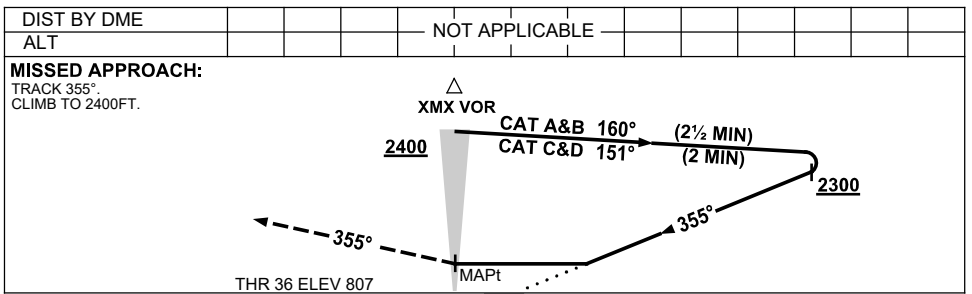
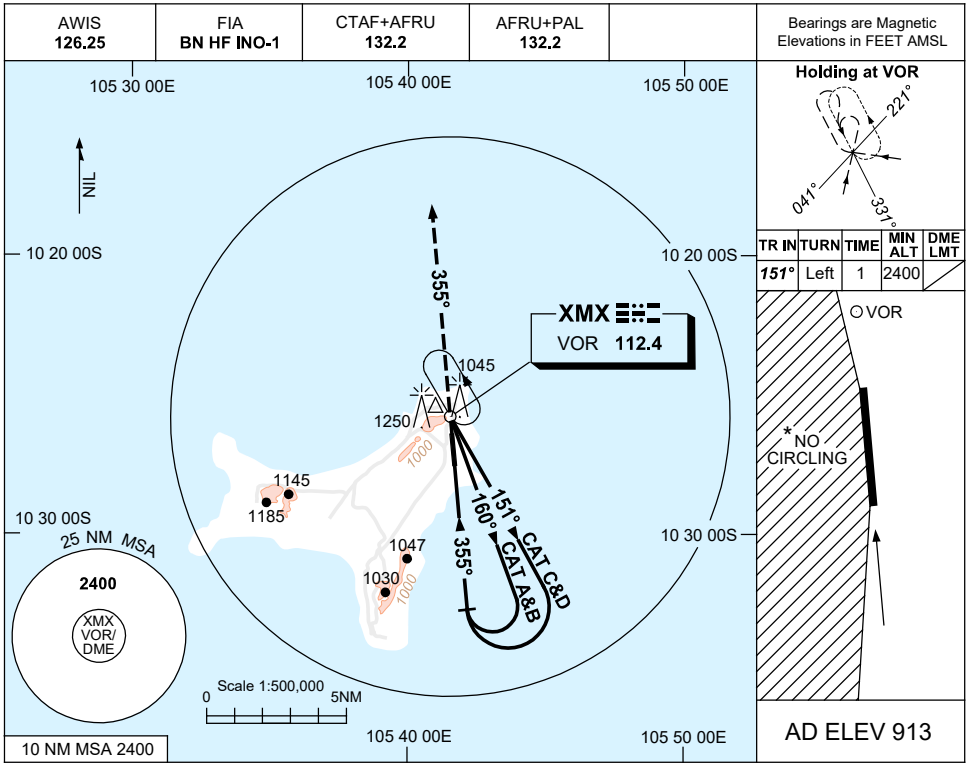
CATEGORY	A	B	C	D
S-I VOR		<b>1540 (627-3.4)</b>		
S-I VOR/DME		<b>1540 (627-3.4)</b>		
CIRCLING*	<b>1650 (737-2.4)</b>	<b>1750 (837-4.0)</b>	<b>1750 (837-5.0)</b>	
ALTERNATE	(1237-4.4)	(1337-6.0)	(1337-7.0)	

Changes: AFRU+PAL

PXMV001-171

**USE QNH** VOR-Y RWY 36  
**CHRISTMAS ISLAND, AUSTRALIA (YPXM)**

**16 JUN 2022**



**NOTES**

CATEGORY	A	B	C	D
S-I VOR	<b>1590 (783-4.5)</b>			
CIRCLING *	<b>1650 (737-2.4)</b>	<b>1750 (837-4.0)</b>	<b>1750 (837-5.0)</b>	
ALTERNATE	(1237-4.4)	(1337-6.0)	(1337-7.0)	

1. MAX IAS:  
 INITIAL :  
 CAT A&B 140KT.  
 CAT C&D 210KT.

\* 2. NO CIRCLING WEST OF RWY 18/36.

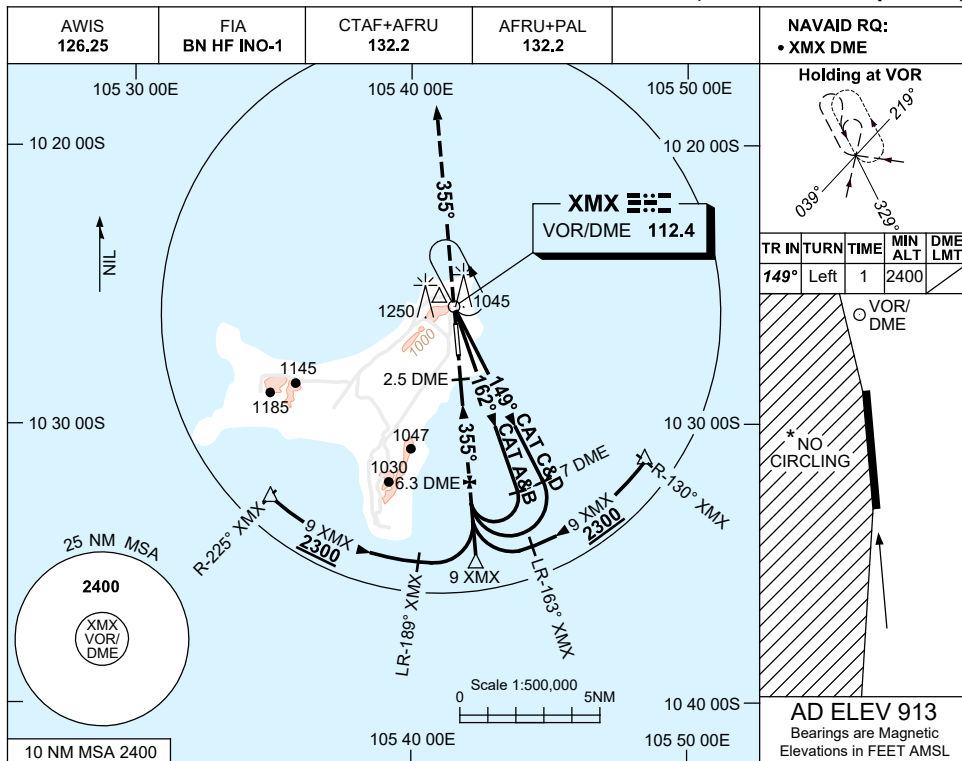
3. COLOUR: SEE SPEC NOTICES.

Changes: AFRU+PAL.

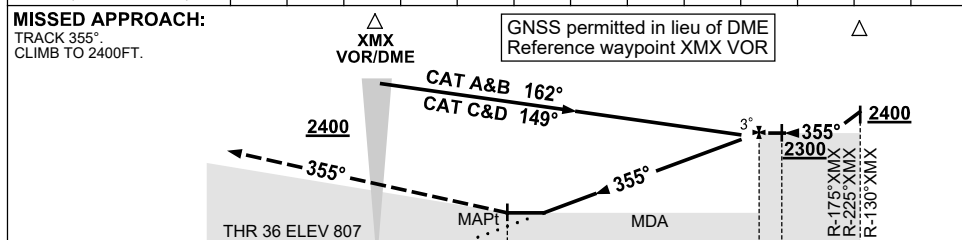
PXMV002-171

**USE QNH** **VOR-Z RWY 36**  
**CHRISTMAS ISLAND, AUSTRALIA (YPXM)**

**16 JUN 2022**



DIST BY DME	3.5	4	5	6	6.3					
ALT (3° APCH PATH)	1400	1570	1890	2210	2300					



**NOTES**

CATEGORY	A	B	C	D
S-I VOR/DME	<b>1400 (593-3.4)</b>			
CIRCLING *	<b>1650 (737-2.4)</b>	<b>1750 (837-4.0)</b>	<b>1750 (837-5.0)</b>	
ALTERNATE	(1237-4.4)	(1337-6.0)	(1334-7.0)	

1. MAX IAS:  
INITIAL :  
CAT A&B 140KT.  
CAT C&D 210KT.
- \*2. NO CIRCLING WEST OF RWY 18/36.
3. COLOUR: SEE SPEC NOTICES.

Changes:AFRU+PAL

PXMV003-171