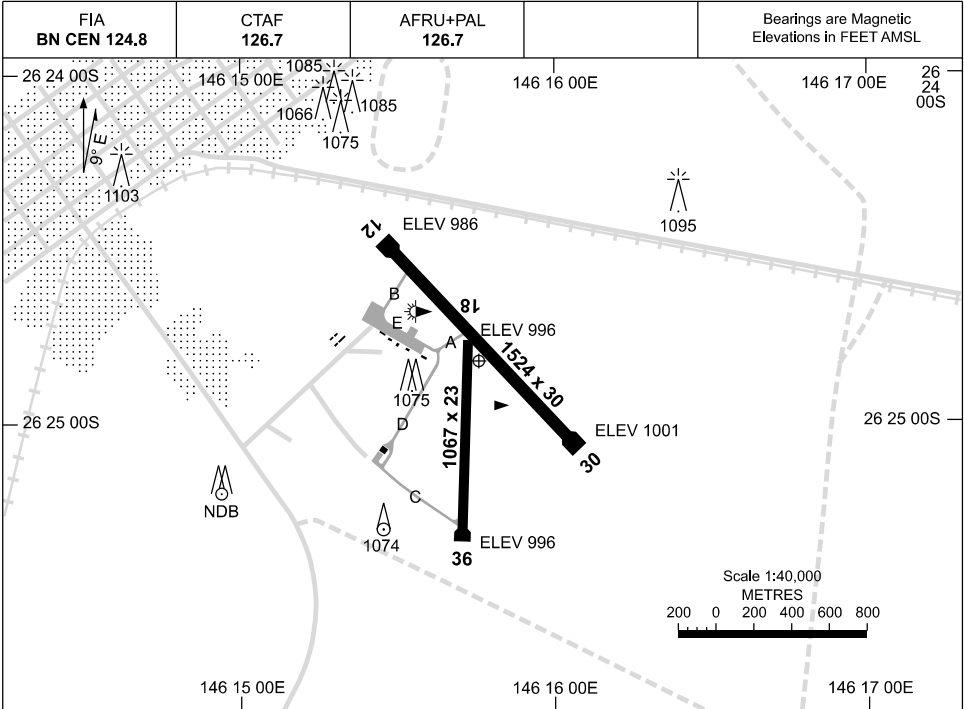


19 MAR 2026

AD ELEV 1003
26 24 48S 146 15 45E

AERODROME CHART
CHARLEVILLE, QLD (YBCV)



RWY		AERODROME LIGHTING	
		RL : AFRU+PAL 126.7, SDBY (15 SEC)	
12	128	LIRL	
30	308	LIRL	
18	173	NIL	
36	353	NIL	

NOTES

1. AWIS (PHONE) 07 3564 3710

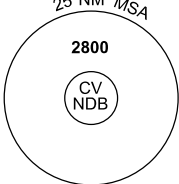
Changes: UNICOM DELETED, AFRU+PAL 126.7, Editorial.

BCVAD01-186

GNSS ARRIVAL PROCEDURES CHARLEVILLE, QLD (YBCV)

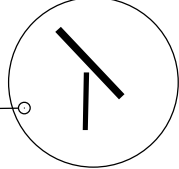
19 MAR 2026

FIA BN CEN 124.8	CTAF 126.7	AFRU+PAL 126.7			Bearings are Magnetic Elevations in FEET AMSL
----------------------------	----------------------	--------------------------	--	--	--



25 NM MSA
2800
CV NDB

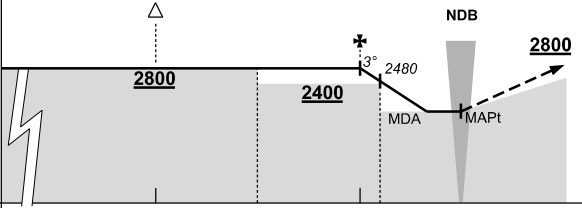
REFERENCE WAYPOINT CV NDB
AWIS (PHONE) 07 3564 3710



CV NDB 269

10 NM MSA 2600

AD ELEV 1003

ALL ROUTES TO CV NDB											<p>MISSED APPROACH: CLIMB ON TRACK TO 2800FT.</p>
	NM TO CV NDB	25	15	10	5	4	0				
CIRCLING MINIMA				A,B: 1780-2.4		C: 1880-4.0		D: 2050-5.0			
NM TO CV NDB	5	4	3	2.6	2.1	1.8					
ALT (3° APCH PATH)	2800	2480	2160	2050	1880	1780					

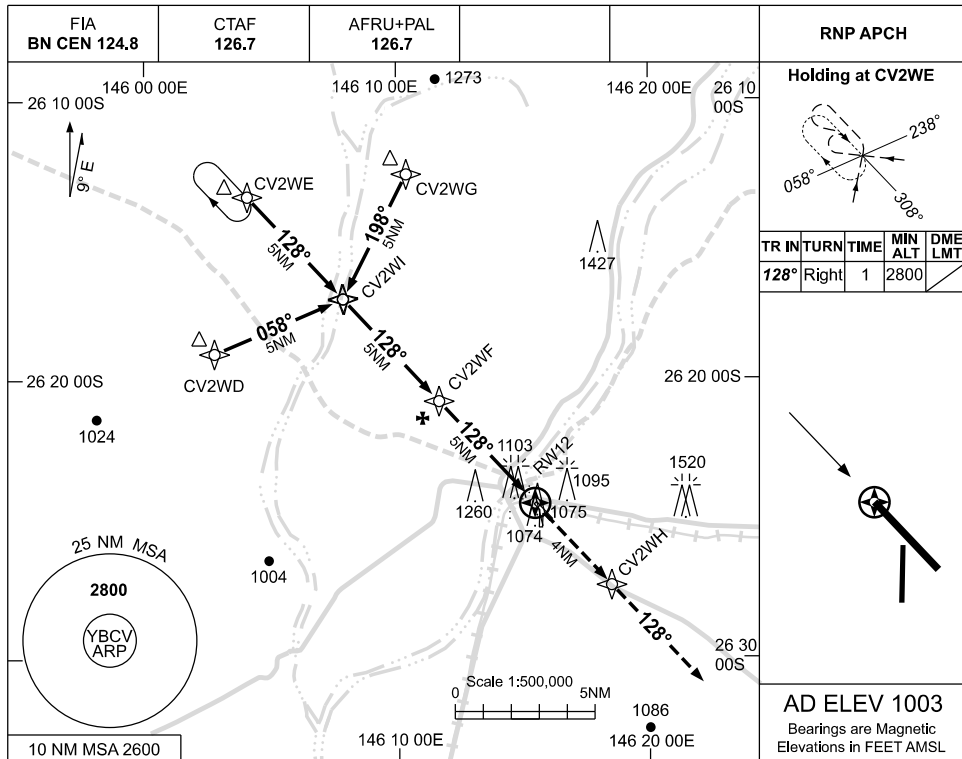
Changes: UNICOM DELETED, AFRU+PAL 126.7.

USE QNH

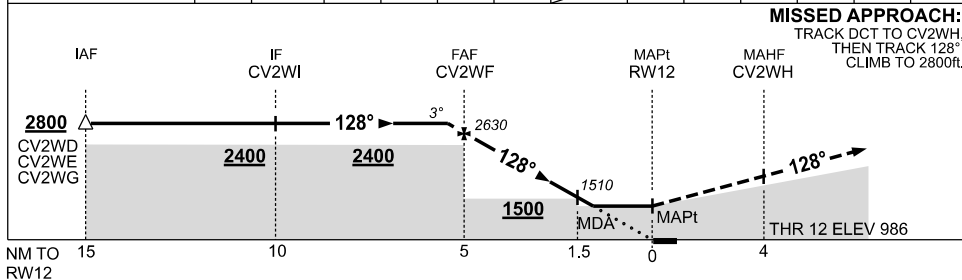
RNP RWY 12

CHARLEVILLE, QLD (YBCV)

19 MAR 2026



NM TO NEXT WPT	0.5	CV2WF	4	3	2	1.4	RWY12
ALT (3° APCH PATH)	2800	2630	2310	1990	1670	1480	



NOTES

- MAX IAS:
INITIAL : 210KT.
- AWIS (PHONE)
07 3007 4160

CATEGORY	A	B	C	D
LNAV	1480 (494-2.8)			
CIRCLING	1780 (777-2.4)	1880 (877-4.0)	2050 (1047-5.0)	
ALTERNATE	(1277-4.4)	(1377-6.0)	(1547-7.0)	

Changes: UNICOM DELETED, AFRU+PAL 126.7.

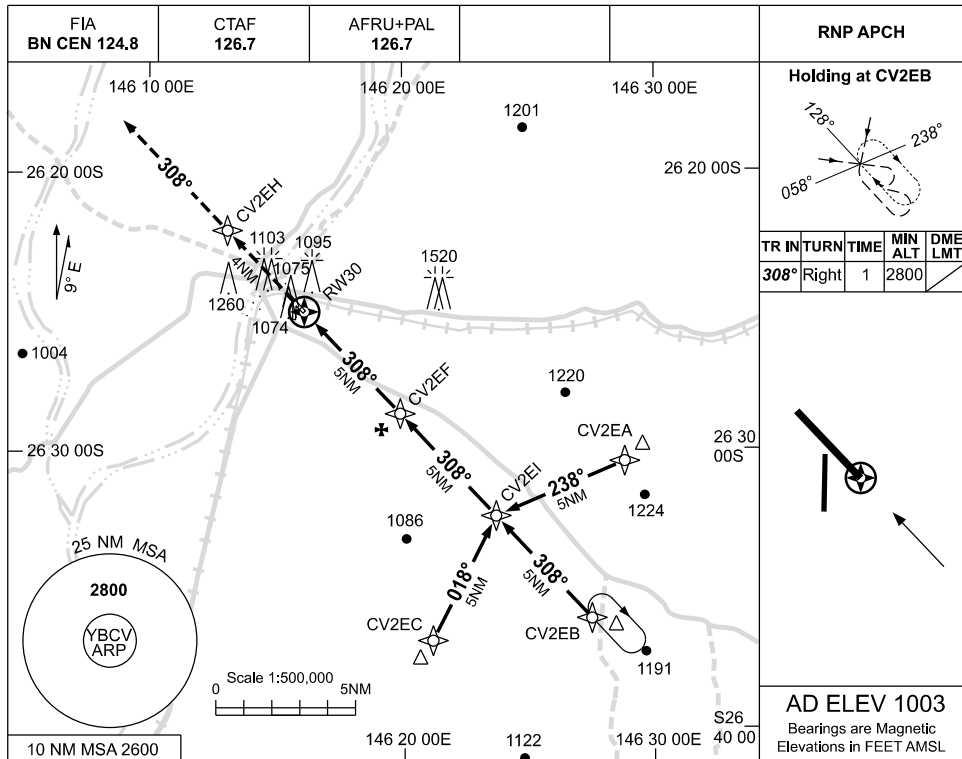
BCVGN01-186

USE QNH

RNP RWY 30

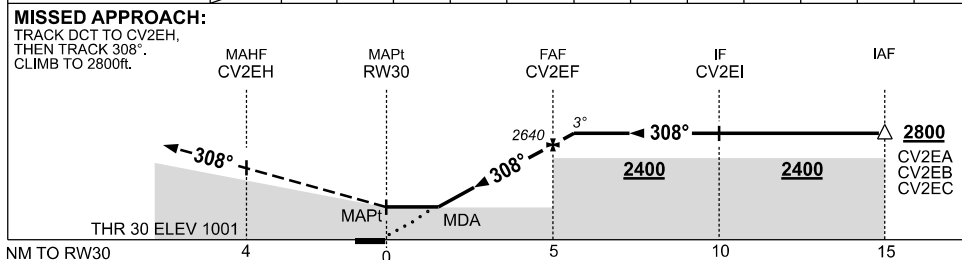
CHARLEVILLE, QLD (YBCV)

19 MAR 2026



AD ELEV 1003
Bearings are Magnetic
Elevations in FEET AMSL

NM TO NEXT WPT	RW30	1.5	2	3	4	CV2EF	0.5						
ALT (3° APCH PATH)		1520	1690	2010	2320	2640	2800						



NOTES

- MAX IAS:
INITIAL : 210KT.
- AWIS (PHONE)
07 3007 4160

CATEGORY	A	B	C	D
LNAV	1520 (517-2.9)			
CIRCLING	1780 (777-2.4)	1880 (877-4.0)	2050 (1047-5.0)	
ALTERNATE	(1277-4.4)	(1377-6.0)	(1547-7.0)	

Changes: UNICOM DELETED, AFRU+PAL 126.7.

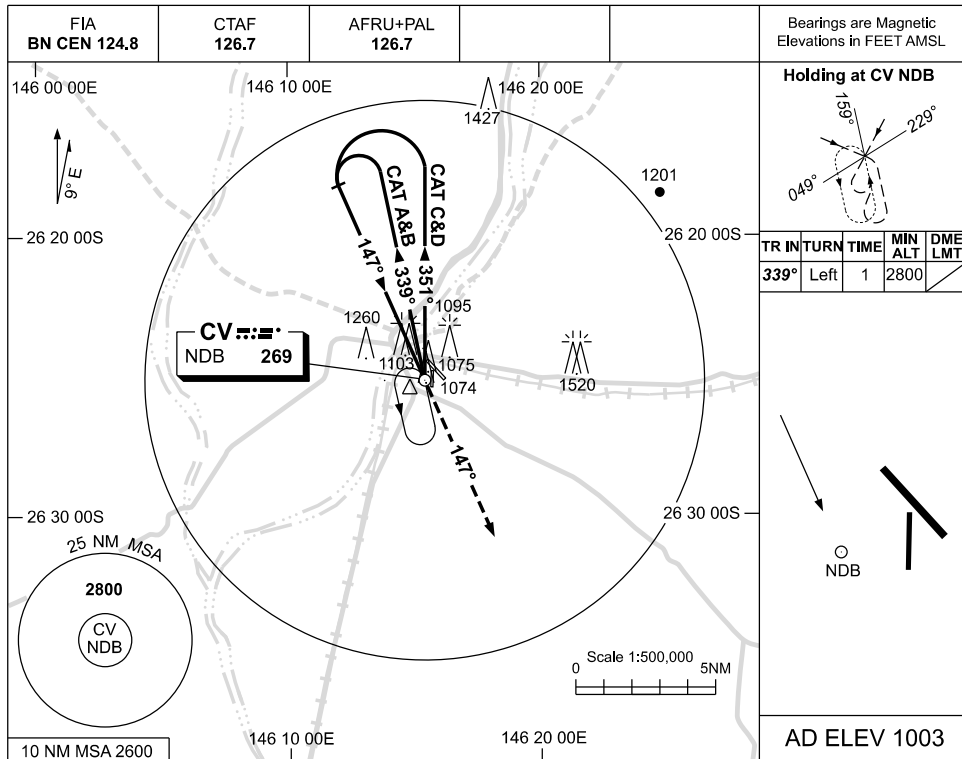
BCVGN02-186

USE QNH

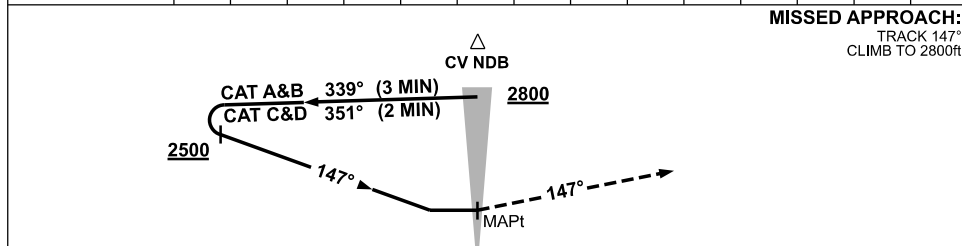
NDB-A

CHARLEVILLE, QLD (YBCV)

19 MAR 2026



DME DIST	NOT APPLICABLE									
ALT										



CATEGORY	A	B	C	D
CIRCLING	1780 (777-2.4)		1880 (877-4.0)	2050 (1047-5.0)
ALTERNATE	(1277-4.4)		(1377-6.0)	(1547-7.0)

- NOTES**
- MAX IAS:
INITIAL :
CAT C&D 210KT.
 - AWIS (PHONE)
07 3564 3710

Changes: UNICOM DELETED, AFRU+PAL 126.7.

BCVNB01-186