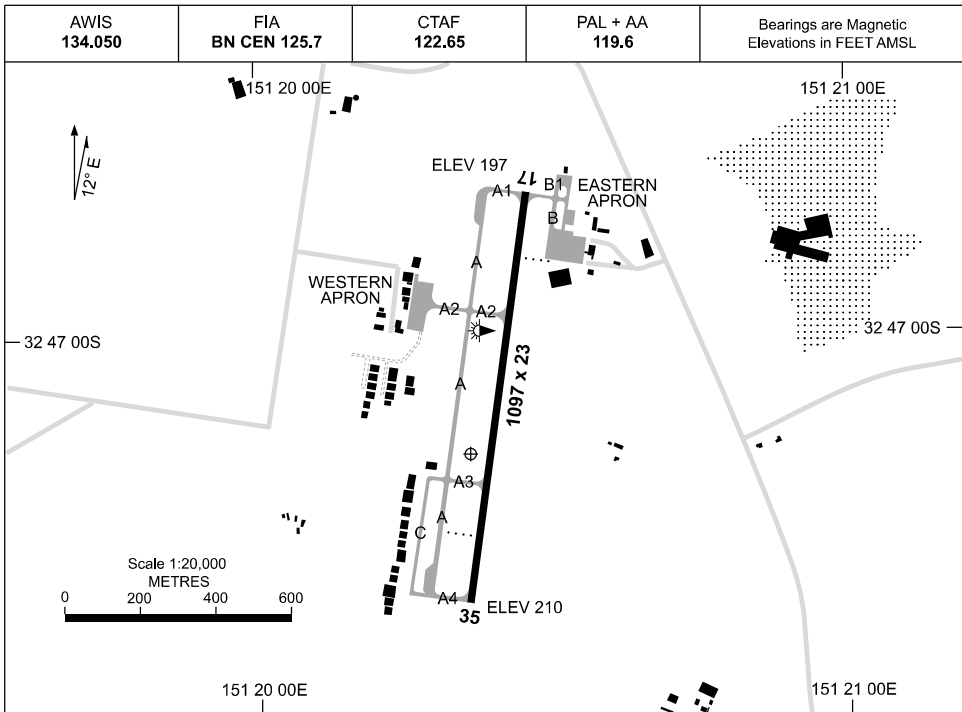


27 NOV 2025

AD ELEV 210
32 47 10S 151 20 22E

AERODROME CHART
CESSNOCK, NSW (YCNK)



	AERODROME LIGHTING
RWY	TAXIWAY : BLUE EDGE MARKERS TWY A, BLUE EDGE TWY B RL : PAL+AA 119.6, SDBY (30 SEC)
17 <small>176</small>	PAPI 3.1° 32FT LIRL
<small>356</small> 35	PAPI 3.1° 32FT LIRL

NOTES

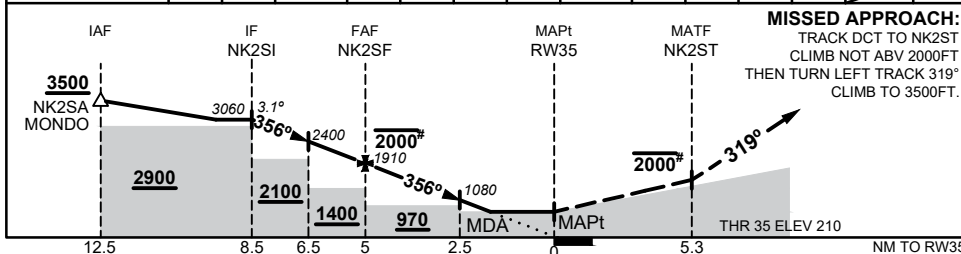
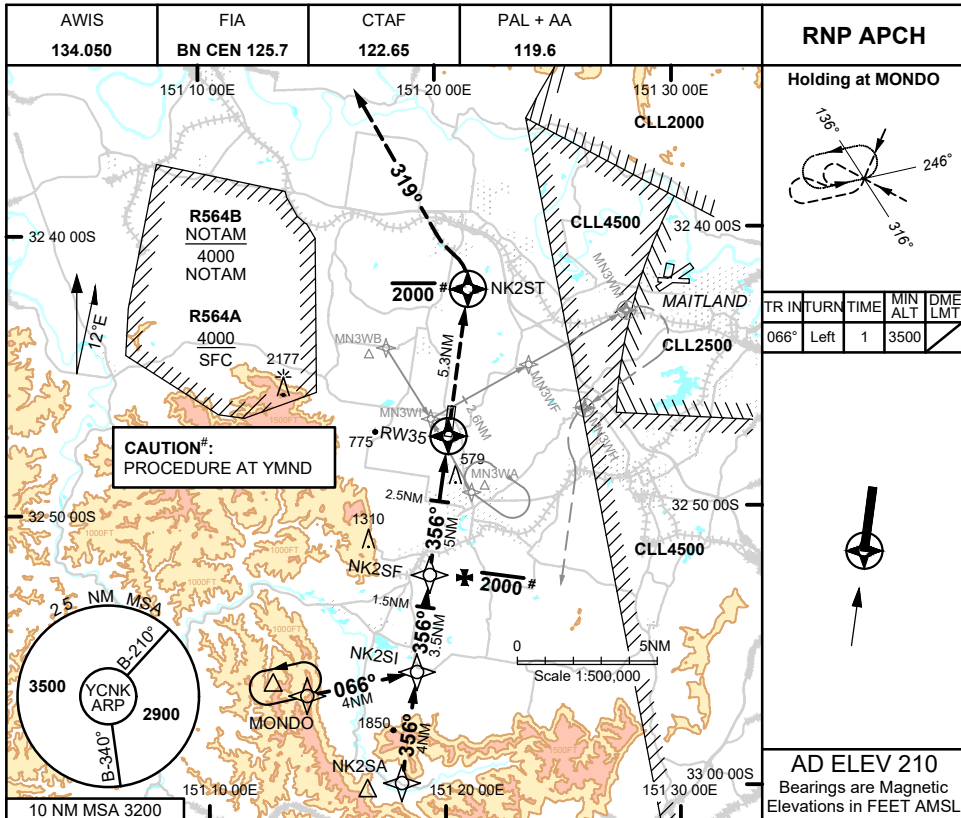
1. FIA FREQ 125.7 AVBL IN CIRCUIT AREA.
2. AWIS (PHONE) 02 9353 6410
3. PAL 119.6 RQ THREE ONE-SECOND PULSES TO ACTIVATE.

Changes: NOTE 3, Editorial.

CNKAD01-185

RNP RWY 35
CESSNOCK, NSW (YCNK)

28 NOV 2024



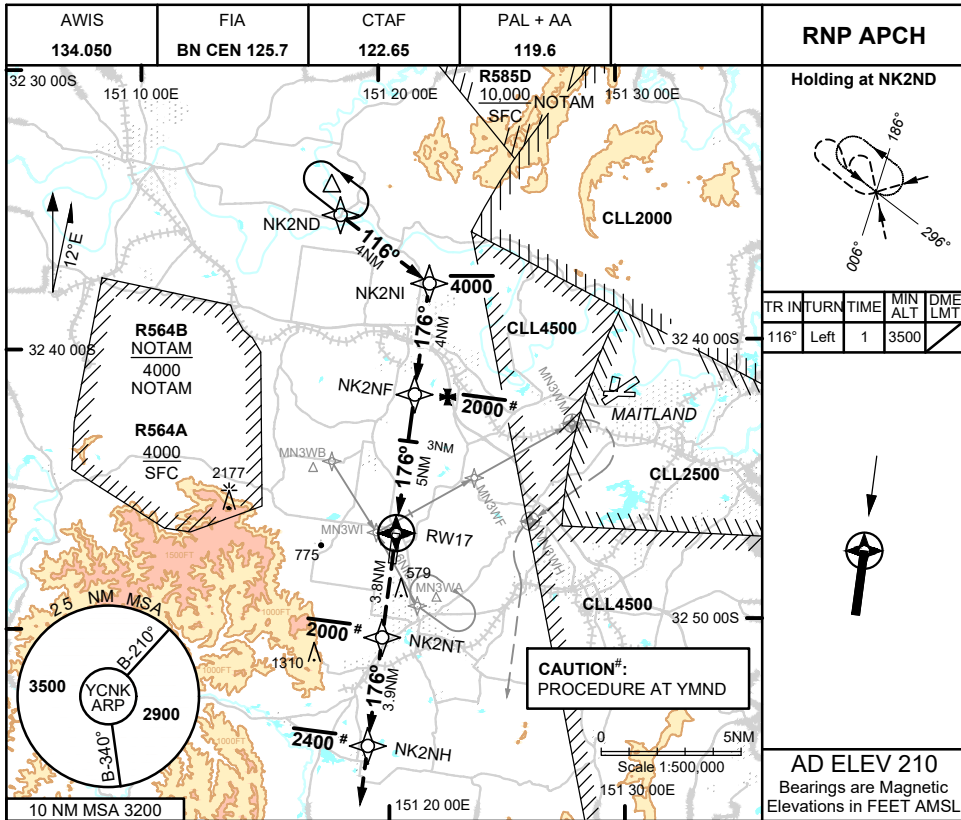
CATEGORY	A	B	C	D
LNAV	930 (720 - 4.0)		NOT APPLICABLE	
CIRCLING*	1170 (960 - 2.4)			
ALTERNATE	(1460 - 4.4)			

NOTES
 #1.PROC OVERLAID BY YMND RNP W. PRESCRIBED ALTITUDES ENSURE SEPARATION.

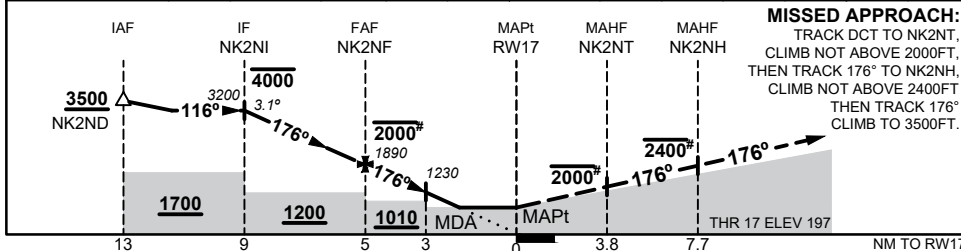
Changes: NEW PROCEDURE

CNKG01-181

28 NOV 2024



NM TO NEXT WP	0.9	NK2NI	3	2	1	NK2NF	4	3	2	1.7	RW17
ALT (3.1° APCH PATH)	3500	3200	2880	2550	2220	1890	1560	1230	910	820	



CATEGORY	A	B	C	D
LNAV	820 (623 - 3.4)		NOT APPLICABLE	
CIRCLING	1170 (960 - 2.4)			
ALTERNATE	(1460 - 4.4)			

NOTES
 #1.PROC OVERLAID BY YMND RNP W. PRESCRIBED ALTITUDES ENSURE SEPARATION.

Changes: NEW PROCEDURE

CNKG02-181