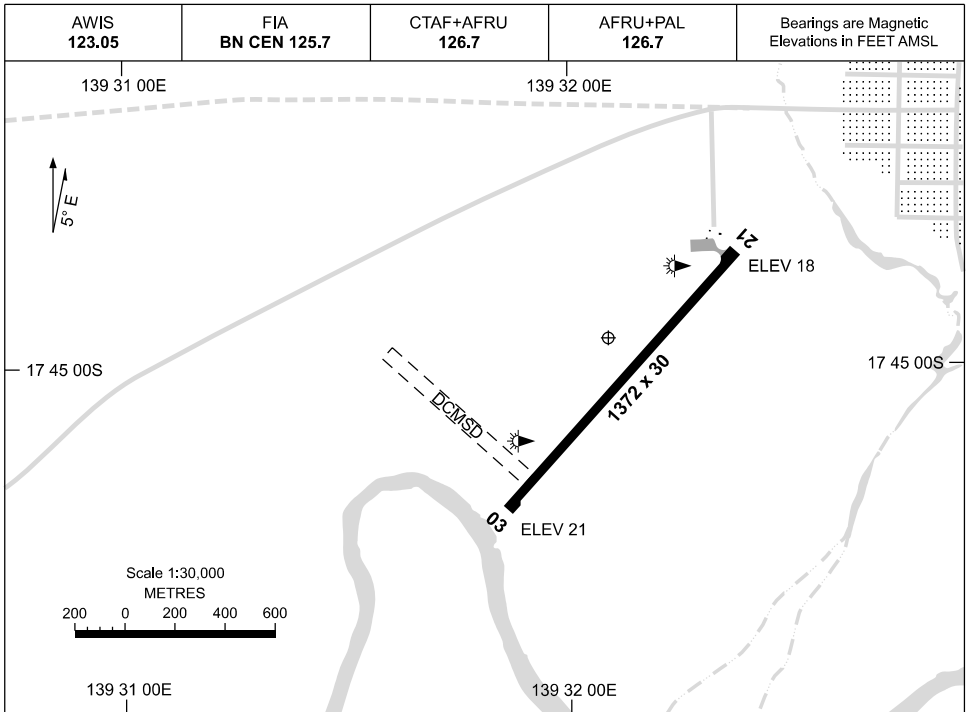


19 MAR 2026

AD ELEV 21  
17 44 55S 139 32 04E

AERODROME CHART  
**BURKETOWN, QLD (YBKT)**



	<b>AERODROME LIGHTING</b>
<b>RWY</b>	TAXIWAY : BLUE EDGE RL : AFRU+PAL 126.7, SDBY (30 SEC)
<b>03</b> <small>037</small>	LIRL
<small>217</small> <b>21</b>	LIRL

**NOTES**

1. FIA FREQ 125.7 AVBL 3,000ft.

Changes: SWITCHOVER TIME, Editorial.

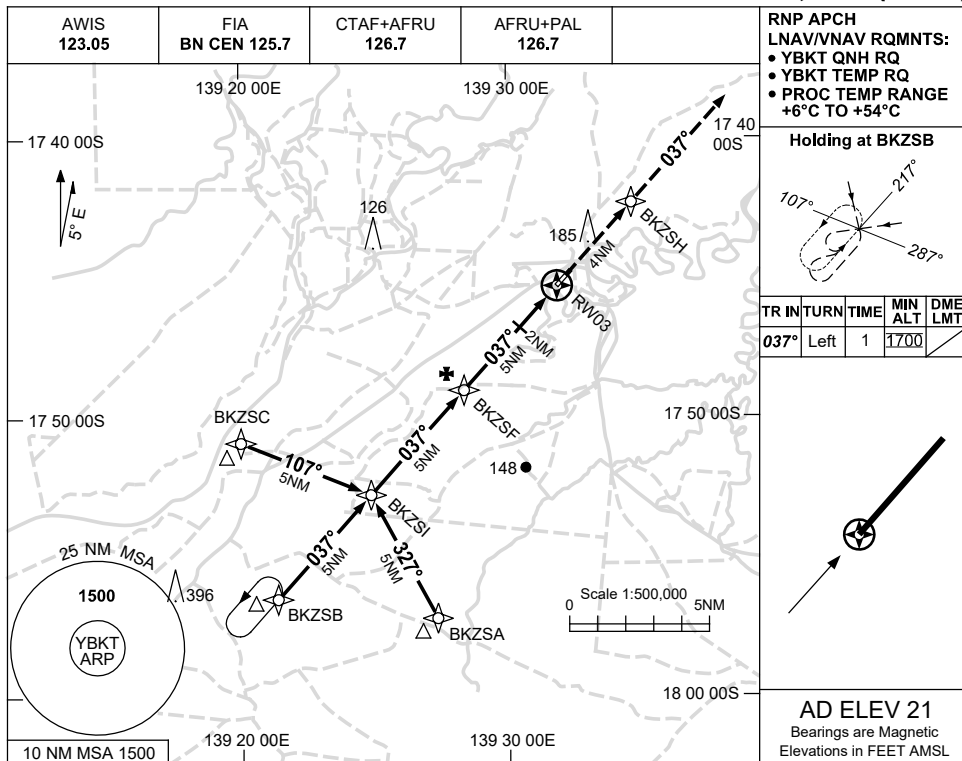
BKTAD01-186

USE QNH

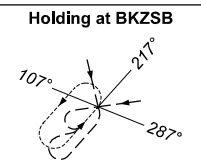
RNP RWY 03

**BURKETOWN, QLD (YBKT)**

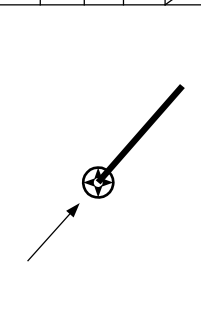
1 DEC 2022



RNP APCH  
 LNAV/VNAV RQMTS:  
 • YBKT QNH RQ  
 • YBKT TEMP RQ  
 • PROC TEMP RANGE  
 +6°C TO +54°C

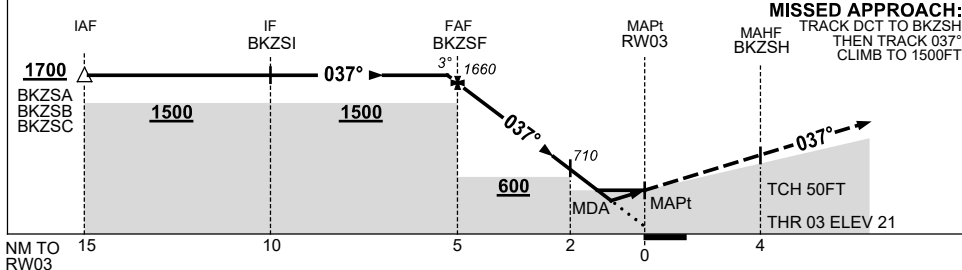


TR	IN	TURN	TIME	MIN ALT	DME LMT
037°	Left	1		1700	



AD ELEV 21  
 Bearings are Magnetic  
 Elevations in FEET AMSL

NM TO NEXT WPT	0.1	BKZSF	4	3	2	1.3	1	0.7	RW03
ALT (3° APCH PATH)	1700	1660	1340	1030	710	500	390	300	



**MISSED APPROACH:**  
 TRACK DCT TO BKZSH,  
 THEN TRACK 037°,  
 CLIMB TO 1500FT.

**NOTES**

CATEGORY	A	B	C	D
LNAV/VNAV	300 (279-1.5)			NOT APPLICABLE
LNAV	500 (479-2.7)			
CIRCLING	620 (599-2.4)		720 (699-4.0)	
ALTERNATE	(1109-4.4)		(1199-6.0)	

1. MAX IAS:  
 INITIAL : 210KT.

Changes: HOLDING ALTITUDE.

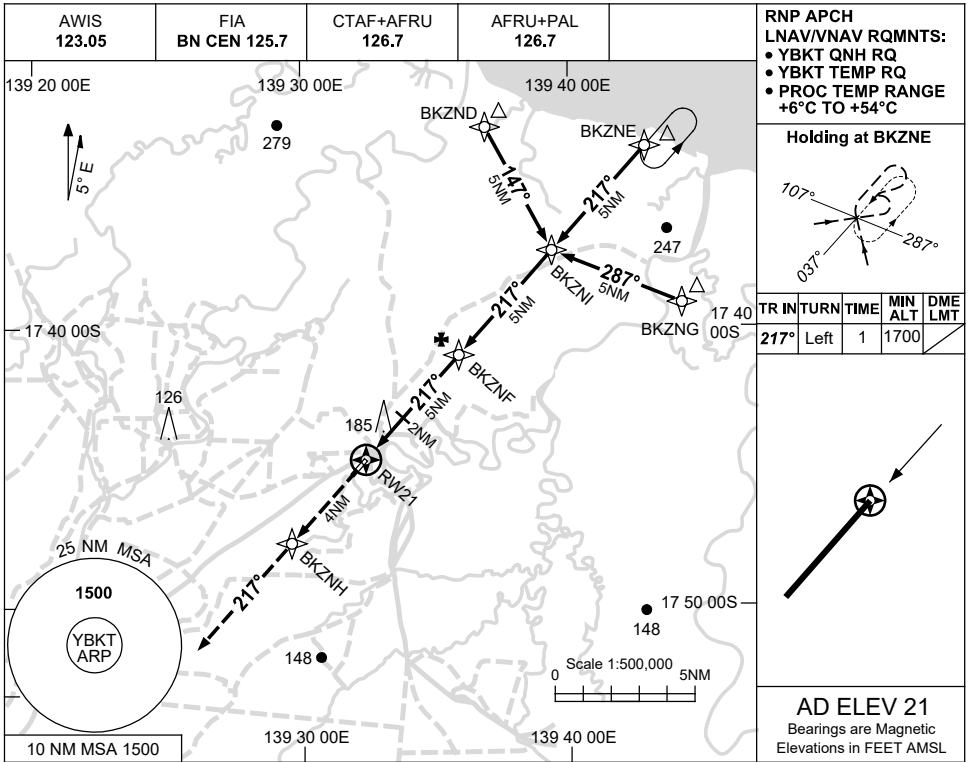
BKTGN01-173

USE QNH

RNP RWY 21

**BURKETOWN, QLD (YBKT)**

16 JUN 2022



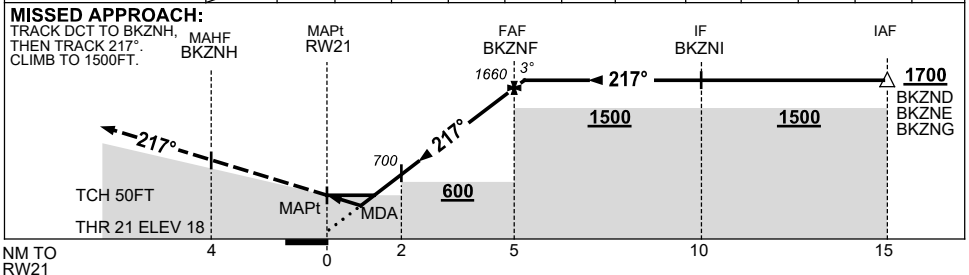
**RNP APCH**  
 LNAV/VNAV RQMTS:  
 • YBKT QNH RQ  
 • YBKT TEMP RQ  
 • PROC TEMP RANGE +6°C TO +54°C

**Holding at BKZNE**

TR IN	TURN	TIME	MIN ALT	DME LMT
217°	Left	1	1700	

**AD ELEV 21**  
 Bearings are Magnetic  
 Elevations in FEET AMSL

NM TO NEXT WPT	RW21	0.9	1	1.5	2	3	4	BKZNF	0.1			
ALT (3° APCH PATH)		340	390	540	700	1020	1340	1660	1700			



**NOTES**

CATEGORY	A	B	C	D
LNAV/VNAV		340 (322-1.8)		NOT APPLICABLE
LNAV		540 (519-2.9)		
CIRCLING	620 (599-2.4)		720 (699-4.0)	
ALTERNATE	(1109-4.4)		(1199-6.0)	

1. MAX IAS: INITIAL : 210KT.

Changes: CHART TITLE, PBN SPECIFICATION BOX, Editorial.

BKTGN02-171