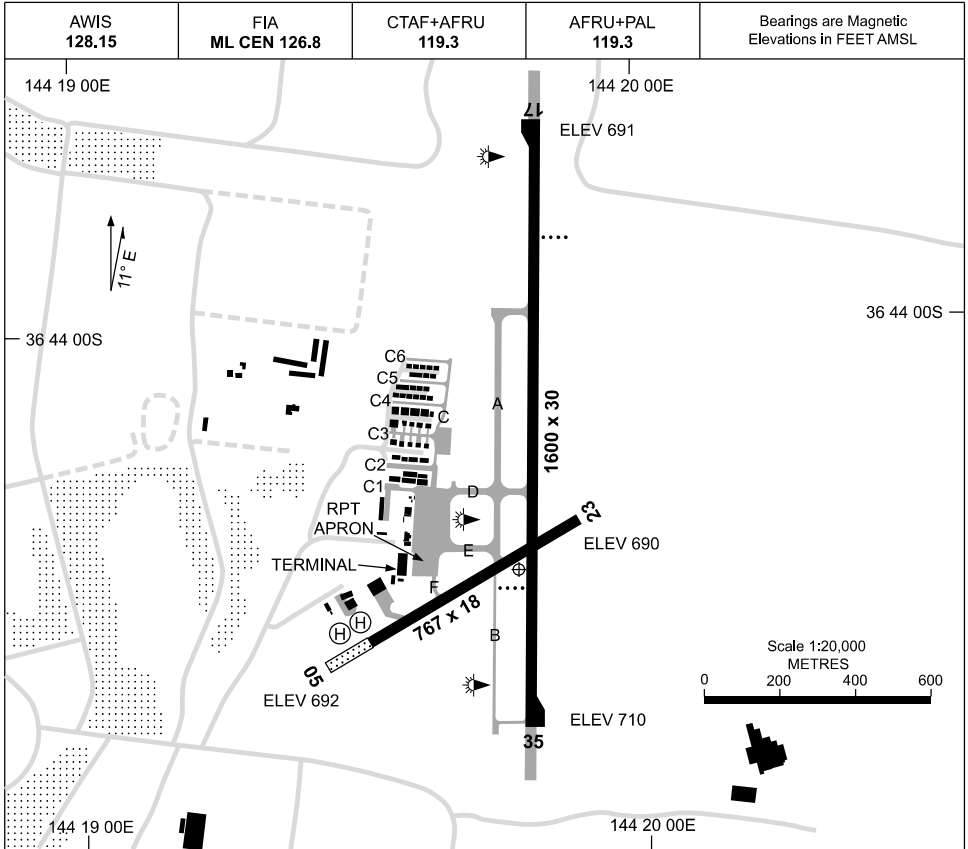


19 MAR 2026

AD ELEV 710
36 44 21S 144 19 47E

AERODROME CHART
BENDIGO, VIC (YBDG)



AERODROME LIGHTING	
RWY	TAXIWAYS : BLUE EDGE ON TWY D RL : AFRU+PAL 119.3, SDBY (15 SEC)
17 <small>171</small>	PAPI 3.0° 50FT LIRL RGL
<small>351</small> 35	PAPI 3.0° 50FT LIRL RGL
05 <small>050</small>	NIL
<small>230</small> 23	NIL

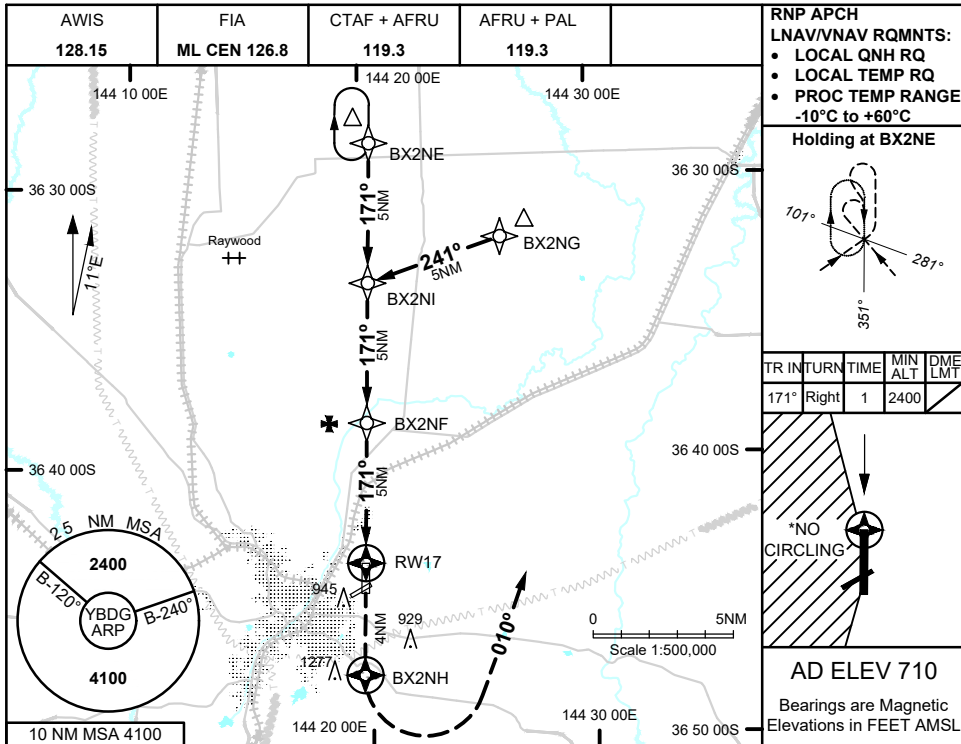
NOTES

1. FIA FREQ 126.8 AVBL IN CIRCUIT AREA AND ABOVE.
2. AWIS RQ ONE ONE-SECOND PULSE TO ACTIVATE.

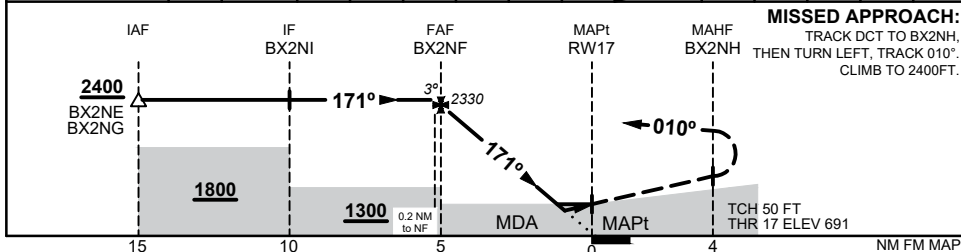
Changes: HELIPAD ADDED, TWY LABELS C-C6 ADDED, Editorial.

BDGAD01-186

23 MAR 2023



NM TO NEXT WPT	0.2	BX2NF	4	3	2	1.4	1	0.8	RW17				
ALT (3° APCH PATH)	2400	2330	2010	1700	1380	1190	1060	990					



NOTES

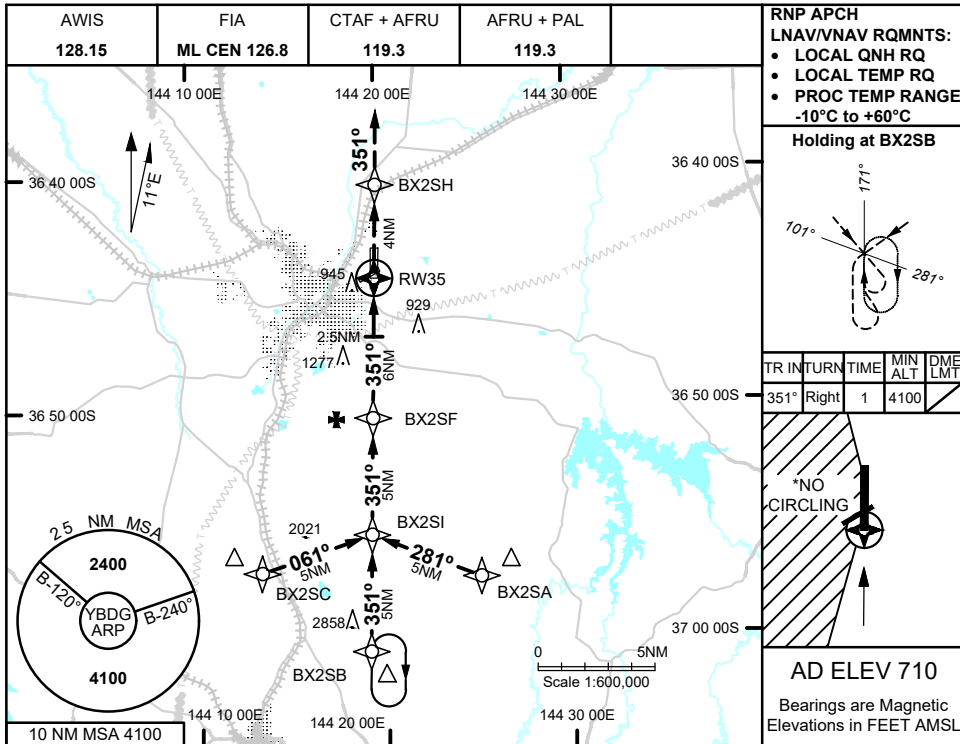
1. MAX IAS:
 INITIAL : 210KTS
- *2.NO CIRCLING WEST
 OF RWY 17/35

CATEGORY	A	B	C	D
LNAV/VNAV	990 (299 - 1.6)			NOT APPLICABLE
LNAV	1190 (499 - 2.8)			
CIRCLING*	1460 (750 - 2.4)		1790 (1080 - 4.0)	
ALTERNATE	(1250 - 4.4)		(1580 - 6.0)	

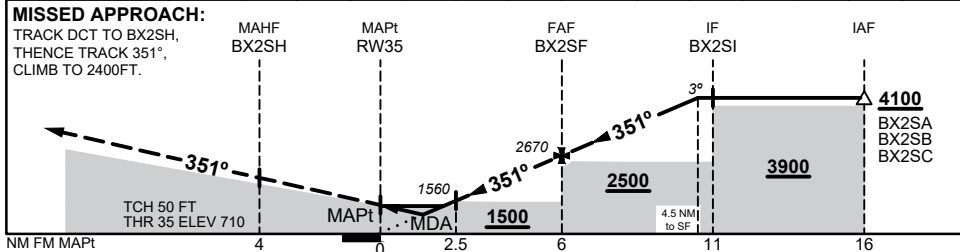
Changes: CHART TITLE, Editorial

BDGGN01-174

23 MAR 2023



NM TO NEXT WPT	RW35	1.3	2	2.5	3	4	5	BX2SF	1	2	3	4	4.5
ALT (3° APCH PATH)		1170	1410	1560	1720	2030	2350	2670	2990	3310	3630	3940	4100



NOTES

1. MAX IAS:
INITIAL : 210KTS
- *2. NO CIRCLING WEST OF RWY 17/35

CATEGORY	A	B	C	D
LNAV/VNAV	1170 (460 - 2.6)			NOT APPLICABLE
LNAV	1420 (710 - 4.0)			
CIRCLING*	1460 (750 - 2.4)		1790 (1080 - 4.0)	
ALTERNATE	(1250 - 4.4)		(1580 - 6.0)	

Changes: CHART TITLE

BDGGN02-174