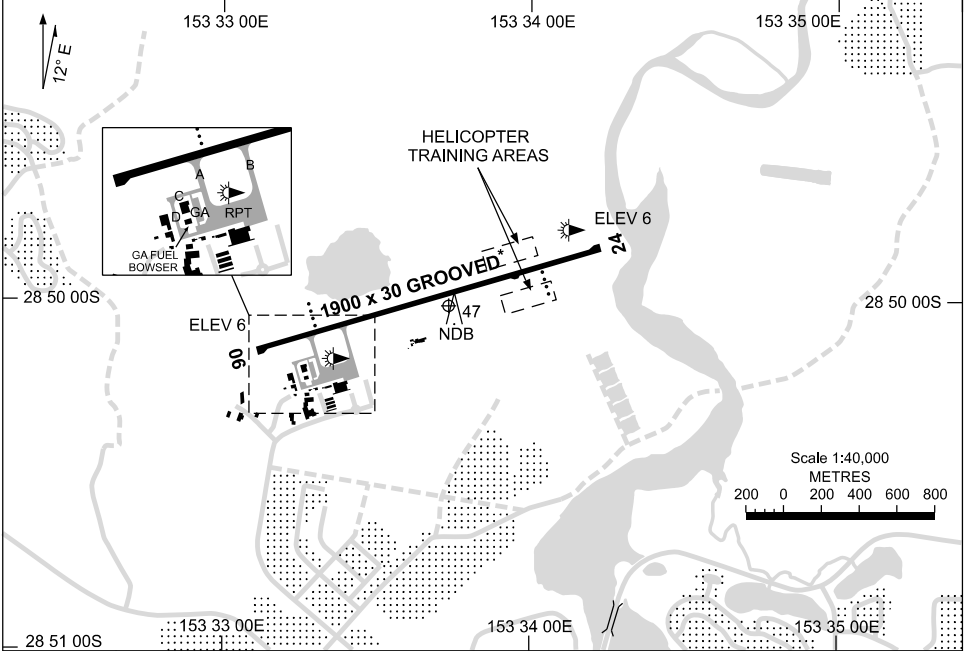


19 MAR 2026

AD ELEV 7
28 50 02S 153 33 45E

AERODROME CHART
BALLINA/BYRON GATEWAY, NSW (YBNA)

AWIS 134.8	FIA BN CEN 120.3	SFIS 124.2	CTAF+AFRU 124.2	PAL+AA 121.3		Bearings are Magnetic Elevations in FEET AMSL
---------------	---------------------	---------------	--------------------	-----------------	--	--



RWY		AERODROME LIGHTING	
		TAXIWAY	: BLUE EDGE, RGL
		RL	: PAL+AA 121.3 , SDBY (15 SEC)
06	<i>062</i>	PAPI	3.0° 53FT MIRL RTIL
<i>242</i>	24	PAPI	3.0° 53FT MIRL RTIL

NOTES

1. BN CEN FIA 120.3 AVBL IN CIRCUIT AREA. FOR ON GROUND COM USE BN CEN 126.05
2. PAL OPERATES PAPI AND RTIL HJ. PAL OPERATES PAPI, RTIL AND MIRL DURING ADVERSE WEATHER CONDITIONS HJ.
- *3. RWY GROOVED - 30M WIDE.

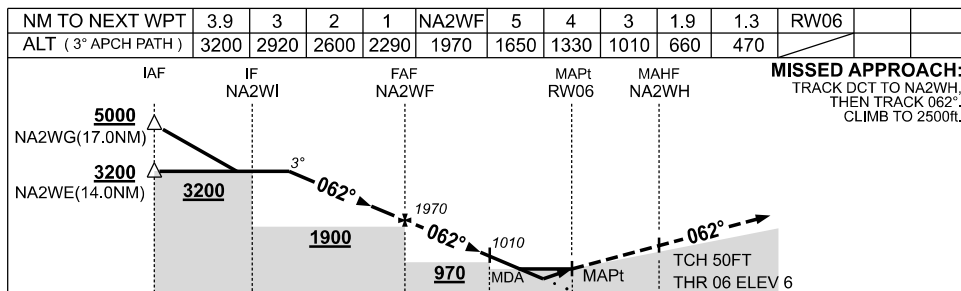
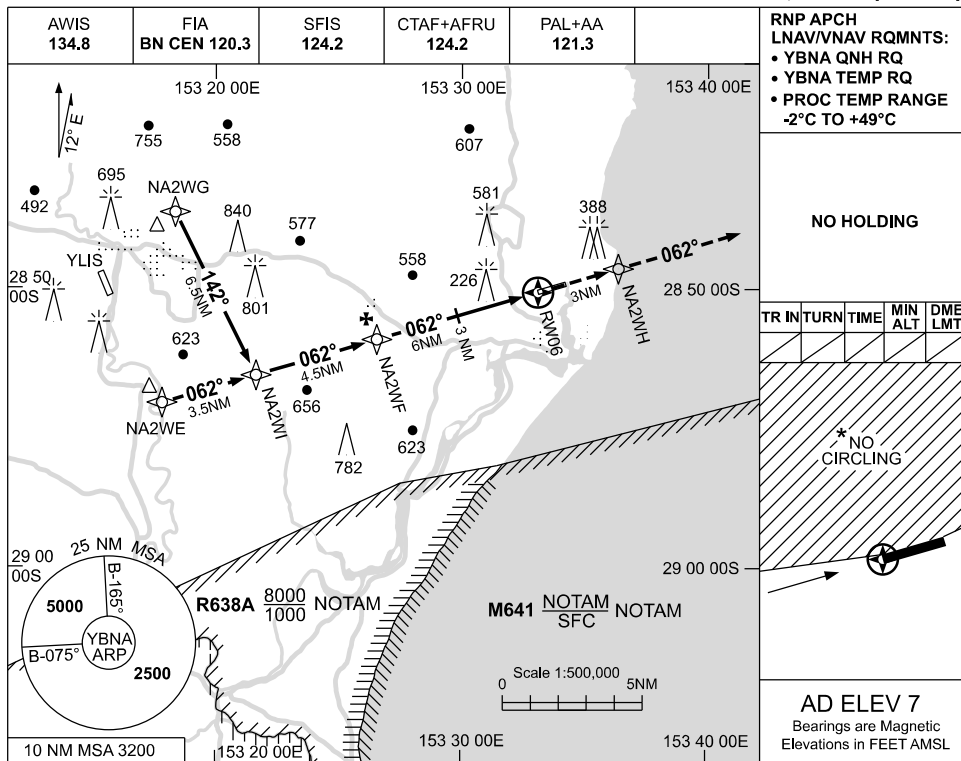
Changes: GA PARKING APRON, Editorial.

BNAAD01-186

USE QNH
BALLINA/BYRON GATEWAY, NSW (YBNA)

RNP Z RWY 06

04 SEP 2025



NM TO RW06: 10.5, 6, 3, 0, 3

CATEGORY	A	B	C	D
LNAV/VNAV		470 (464-2.6)		NOT APPLICABLE
LNAV		660 (653-3.7)		
CIRCLING *	790 (783-2.4)		1030 (1023-4.0)	
ALTERNATE	(1283-4.4)		(1523-6.0)	

- NOTES**
- MAX IAS: INITIAL : 210KT.
 - NO CIRCLING NORTH OF RWY 06 / 24.
 - CAUTION:** PROC OVERLAYS YLIS PROCS.

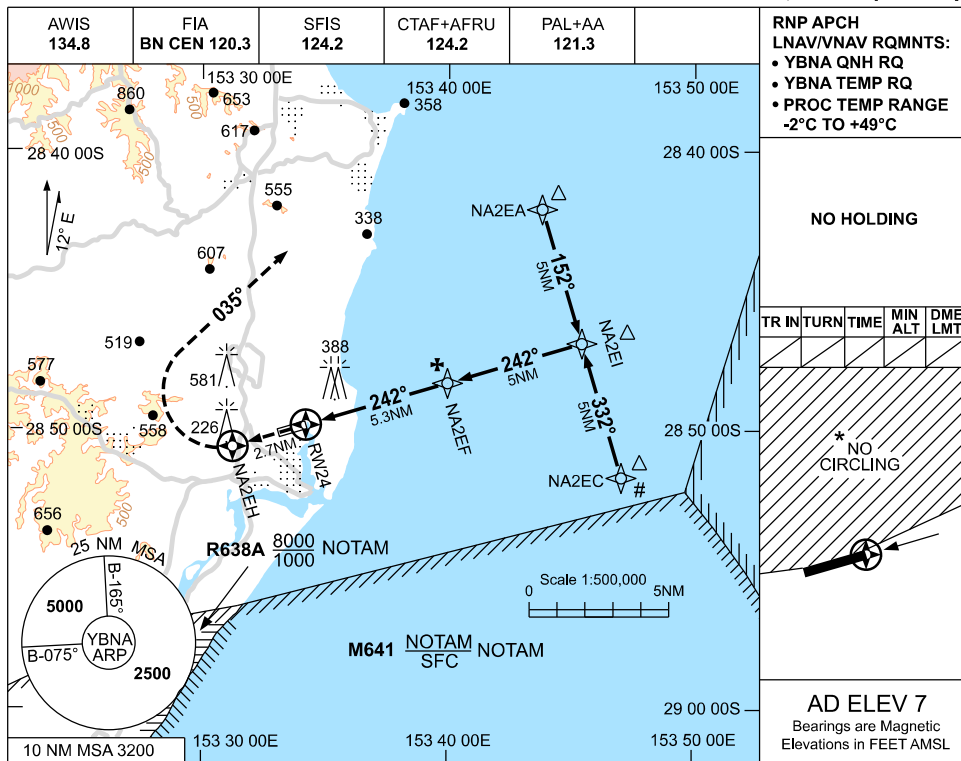
Changes: MSA, WPT NAMING CONVENTION, Editorial.

BNAGN01-184

USE QNH
BALLINA/BYRON GATEWAY, NSW (YBNA)

RNP Z RWY 24

04 SEP 2025



NO HOLDING

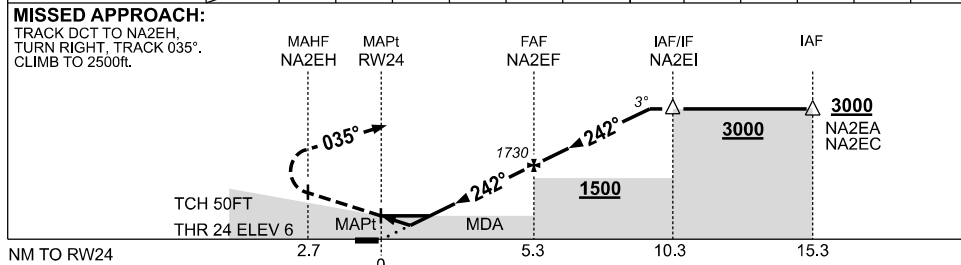
TR	INTURN	TIME	MIN ALT	DME LMT

* NO CIRCLING



AD ELEV 7
Bearings are Magnetic
Elevations in FEET AMSL

NM TO NEXT WPT	RW24	1.4	1.9	2	3	4	NA2EF	1	2	3	4		
ALT (3° APCH PATH)		490	660	690	1010	1330	1730	2050	2370	2690	3000		



NOTES

- MAX IAS: INITIAL : 210KT.
- * NO CIRCLING NORTH OF RWY 06 / 24.
- # 3. APCH VIA NA2EC NOT AVBL WHEN M641 ACTIVE.
4. COLOUR : SEE SPEC NOTICES.

CATEGORY	A	B	C	D
LNAV/VNAV		490 (484-2.7)		NOT APPLICABLE
LNAV		660 (653-3.7)		
CIRCLING *	790 (783-2.4)		1030 (1023-4.0)	
ALTERNATE		(1283-4.4)	(1523-6.0)	

Changes: REVISED PROC.

BNAGN02-184

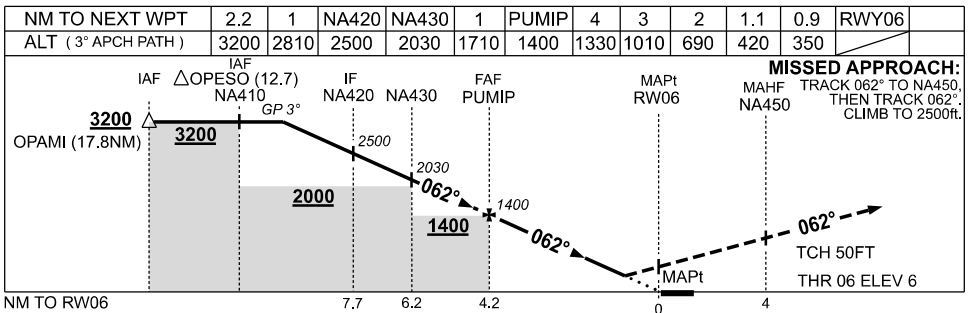
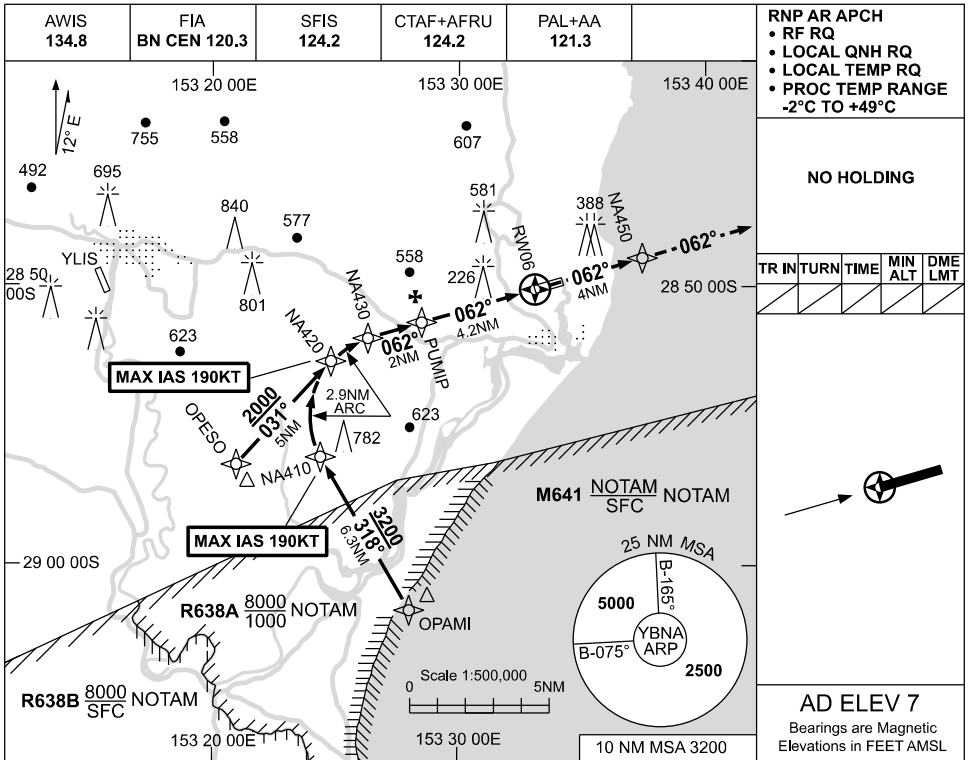
FOR CASA APPROVED OPERATORS ONLY

USE QNH

RNP X RWY 06 (AR)

BALLINA/BYRON GATEWAY, NSW (YBNA)

04 SEP 2025



NOTES

- MAX IAS: RF TURN : 190KT.
- CAUTION:** INITIAL SEGMENTS OVERLAY YLIS RNP RWY 33 PROC.

CATEGORY	A	B	C	D
RNP (0.3)		420 (414-2.3)		NOT AUTHORISED
RNP (0.1)		350 (344-1.9)		
CIRCLING	NOT AUTHORISED			
ALTERNATE	(1203-4.4)		(1423-6.0)	

Changes: MSA, Editorial.

BNAGN03-184

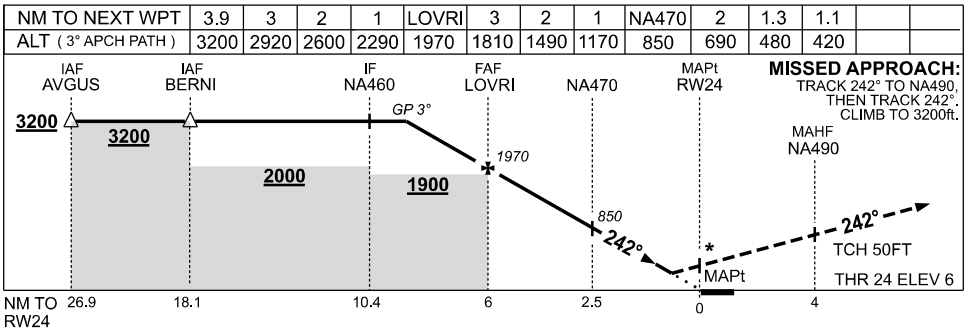
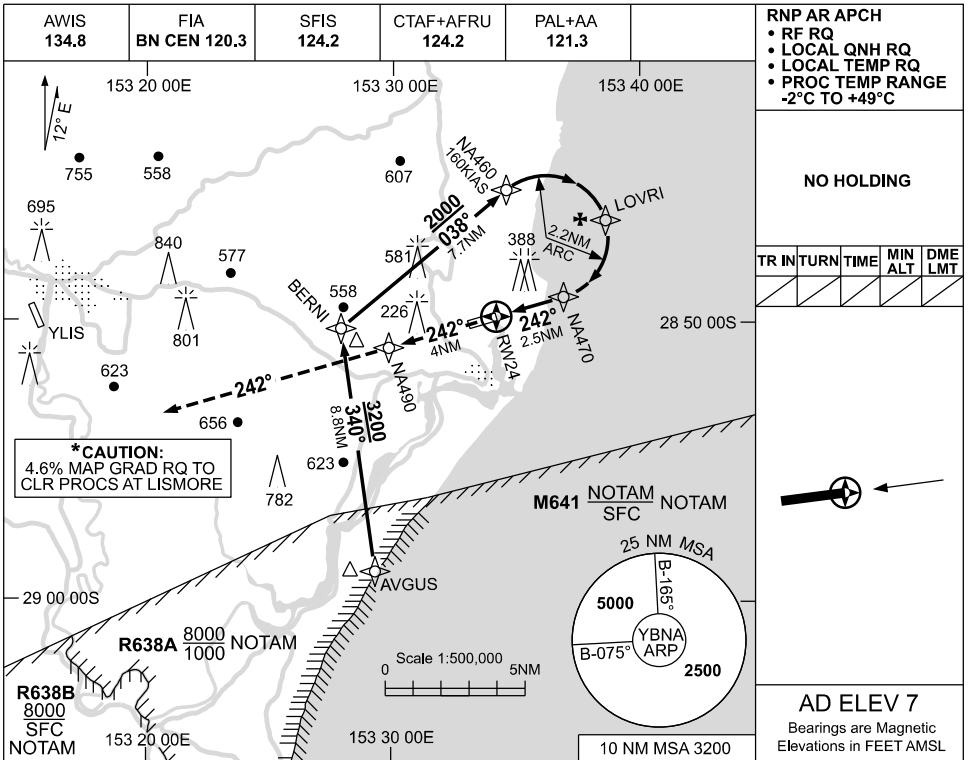
FOR CASA APPROVED OPERATORS ONLY

USE QNH

RNP X RWY 24 (AR)

04 SEP 2025

BALLINA/BYRON GATEWAY, NSW (YBNA)



NOTES

- MAX IAS:
RF TURN : 160KT.

CATEGORY	A	B	C	D
RNP (0.3)		480 (474-2.7)		NOT AUTHORISED
RNP (0.1)		420 (414-2.3)		
CIRCLING	NOT AUTHORISED			
ALTERNATE	(1203-4.4)		(1423-6.0)	

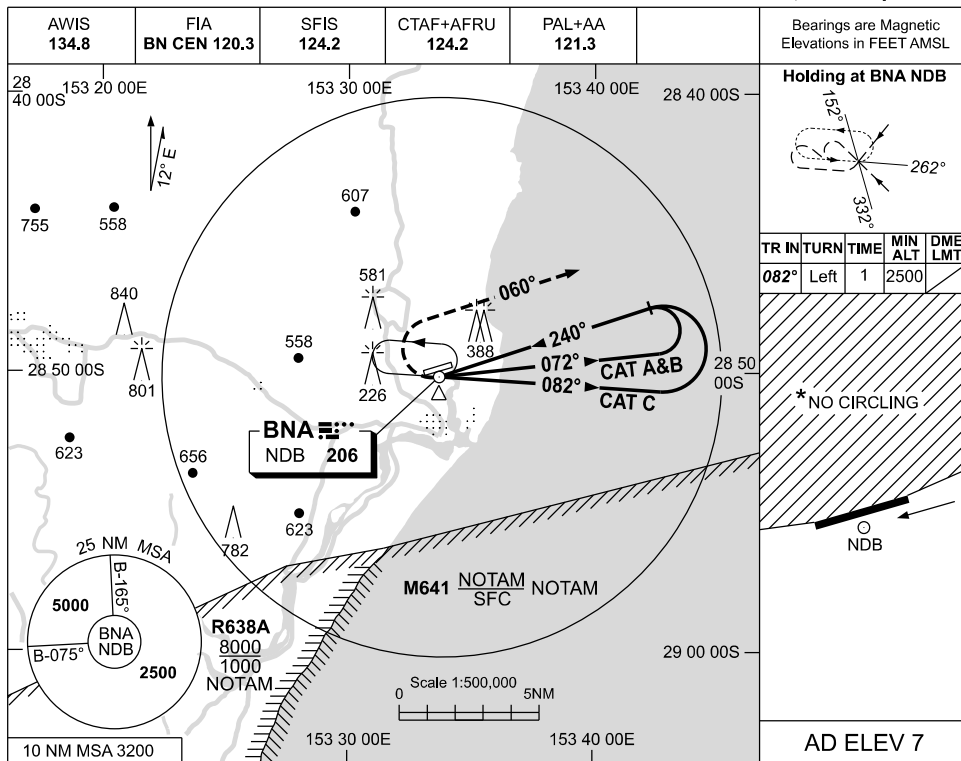
Changes: MSA, Editorial.

BNAGN04-184

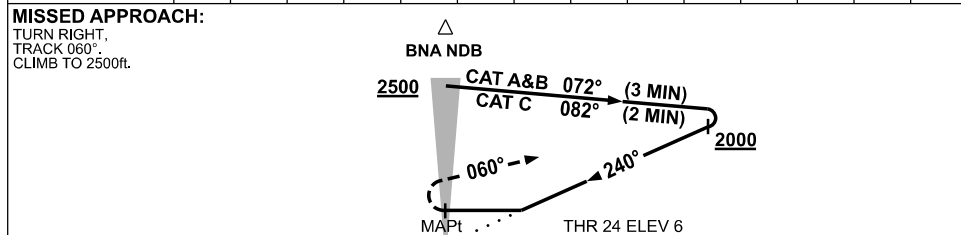
USE QNH
BALLINA/BYRON GATEWAY, NSW (YBNA)

NDB RWY 24

04 SEP 2025



DME DIST	NOT APPLICABLE				
ALT					



NOTES

1. MAX IAS:
HOLDING : 195KT.
INITIAL : 195KT.
MISSED APCH
TURN : 180KT.
- *2. NO CIRCLING NORTH
OF RWY 06 / 24.

CATEGORY	A	B	C	D
S-I NDB	790 (783-4.5)			NOT APPLICABLE
CIRCLING *	790 (783-2.4)	1030 (1023-4.0)		
ALTERNATE	(1283-4.4)		(1523-6.0)	

Changes: MSA, HLDG AND INITIAL MAX IAS, BASE TURN INITIAL AND TURN ALTITUDE, Editorial.

BNA NB01-184