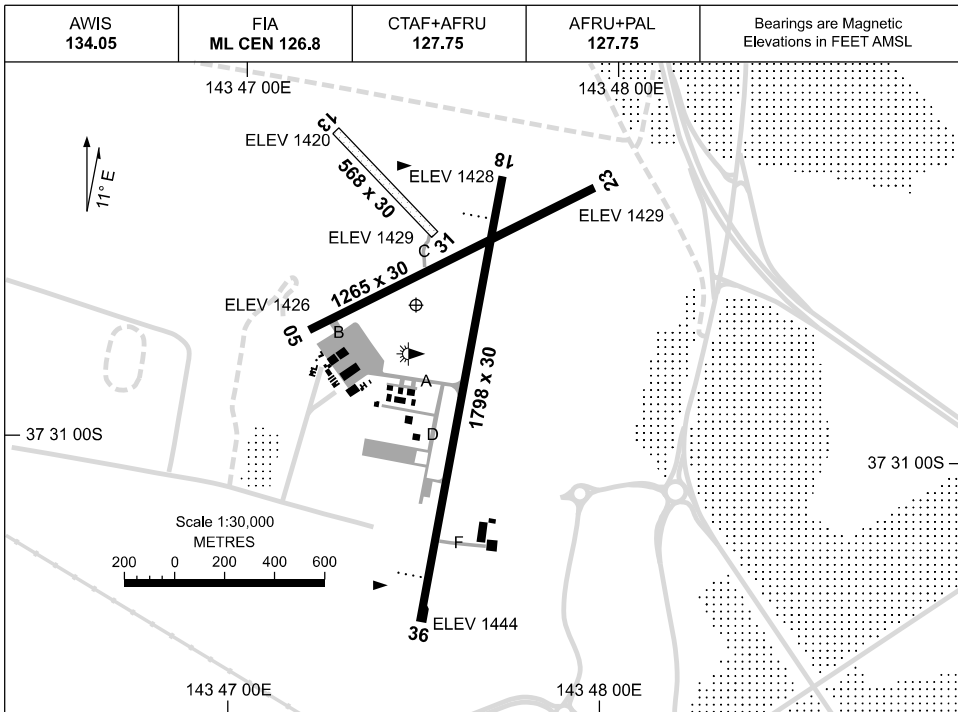


04 SEP 2025

AD ELEV 1444
37 30 42S 143 47 28E

AERODROME CHART
BALLARAT, VIC (YBLT)



RWY		AERODROME LIGHTING
		TAXIWAY: BLUE EDGE RL: AFRU+PAL 127.75, MAN, PTBL (BY ARRANGEMENT)
18 ¹⁷⁸		PAPI RIGHT SIDE 3.0° 29.5FT LIRL
³⁵⁸ 36		PAPI LEFT SIDE 3.0° 29.5FT LIRL
05 ⁰⁵¹		NIL
²³¹ 23		NIL
13 ¹²⁴		NIL
³⁰⁴ 31		NIL
<p>NOTES</p> <ol style="list-style-type: none"> RWY 18/36 LIGHTING ACTIVATED HN. AWIS RQ 1 SEC TRANSMIT PULSE TO ACTIVATE. FIA FREQ 126.8 AVBL 2,000FT. 		

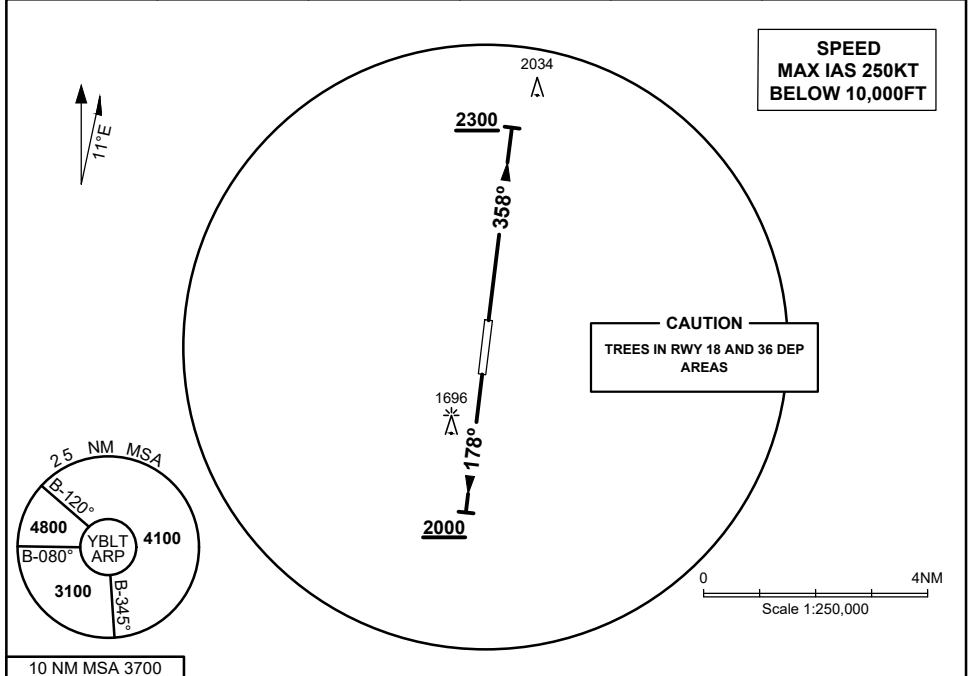
Changes: RWY EXTENSION, WDI, Editorial.

BLTAD01-184

**STANDARD INSTRUMENT DEPARTURES (SID)
BALLARAT ONE DEPARTURE
BALLARAT, VIC (YBLT)**

04 SEP 2025

AWIS 134.05	FIA ML CEN 126.8	CTAF + AFRU 127.75	AFRU + PAL 127.75		Bearings are Magnetic Elevations in FEET AMSL
-----------------------	----------------------------	------------------------------	-----------------------------	--	--



BALLARAT ONE DEPARTURE

RWY 18

- GRAD 3.6% to 2000FT, thence 3.3%
- Track 178°
- AT or ABV 2000FT turn as required
- Continue climb to 4800FT
- Intercept flight plan route

RWY 36

- GRAD 4.1% to 2300FT, thence 3.3%
- Track 358°
- AT or ABV 2300FT turn as required
- Continue climb to 4800FT
- Intercept flight plan route

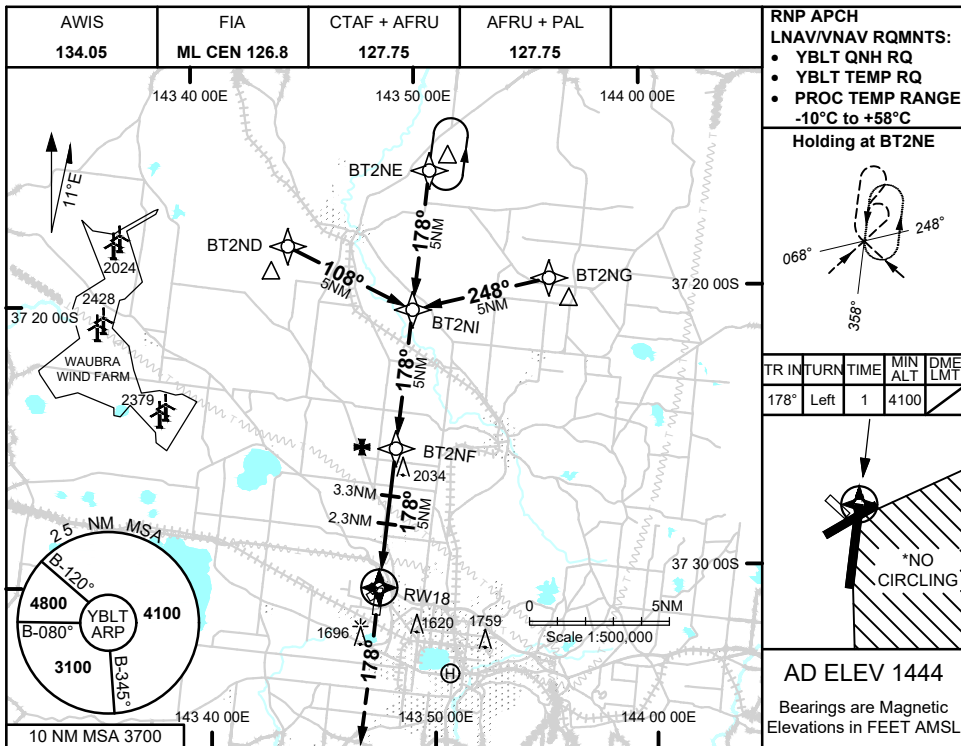
Changes: FROM SUP H64/25

BLTDP01-184

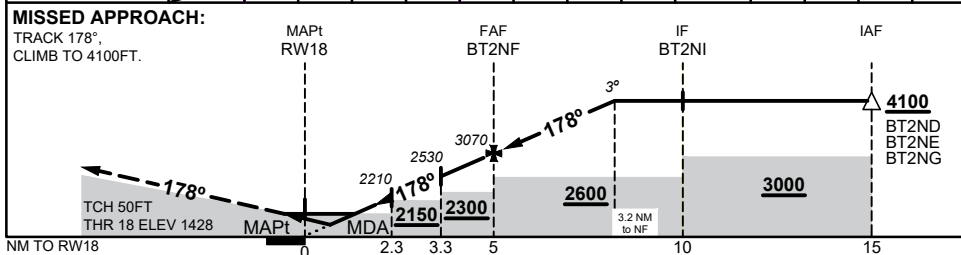
USE QNH

RNP RWY 18
BALLARAT, VIC (YBLT)

19 MAR 2026



NM TO NEXT WPT	RW18	0.7	1	1.3	2	2.3	3	3.3	4	BT2NF	1	2	3	3.2
ALT (3° APCH PATH)		1709	1800	1880	2110	2210	2430	2530	2750	3070	3390	3710	4030	4100



NOTES

1. MAX IAS:
INITIAL : 210KT
- *2. NO CIRCLING IN
SECTOR EAST OF
RWY 05/23 AND
RWY 18/36

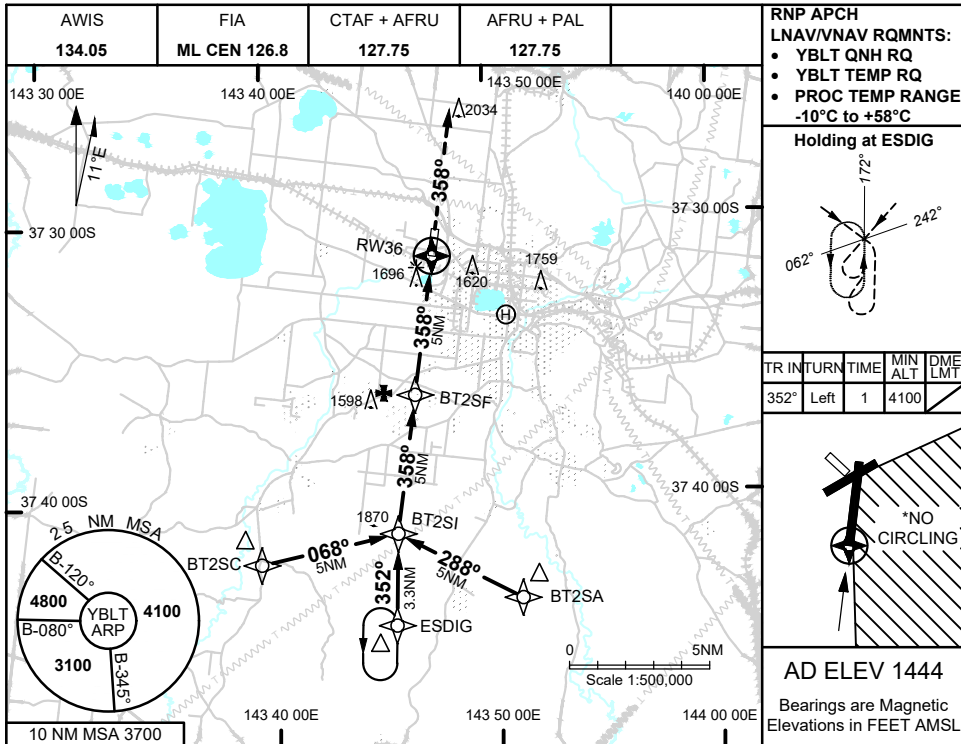
CATEGORY	A	B	C	D
LNAV/VNAV	1709 (281 - 1.5)			NOT APPLICABLE
LNAV	1880 (452 - 2.5)			
CIRCLING*	2240 (796 - 2.4)	2540 (1096 - 4.0)		
ALTERNATE	(1296 - 4.4)		(1596 - 6.0)	

Changes:LNAV/VNAV MINIMA

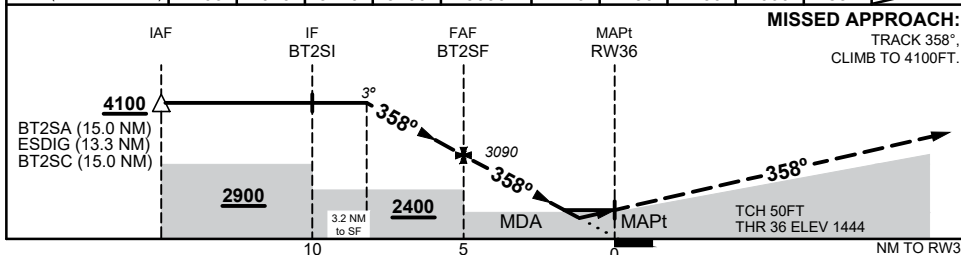
BLTGN01-186

RNP RWY 36
BALLARAT, VIC (YBLT)

19 MAR 2026



NM TO NEXT WPT	3.2	3	2	1	BT2SF	4	3	2	1.8	1.1	RW36
ALT (3° APCH PATH)	4100	4040	3720	3400	3090	2770	2450	2130	2060	1857	



NOTES

1. MAX IAS:
 INITIAL : 210KT
- *2. NO CIRCLING IN
 SECTOR EAST OF
 RWY 05/23 AND
 RWY 18/36

CATEGORY	A	B	C	D
LNAV/VNAV	1857 (413 - 2.3)			NOT APPLICABLE
LNAV	2060 (616 - 3.5)			
CIRCLING*	2240 (796 - 2.4)		2540 (1096 - 4.0)	
ALTERNATE	(1296 - 4.4)		(1596 - 6.0)	

Changes: LNAV/VNAV MINIMA

BLTGN02-186