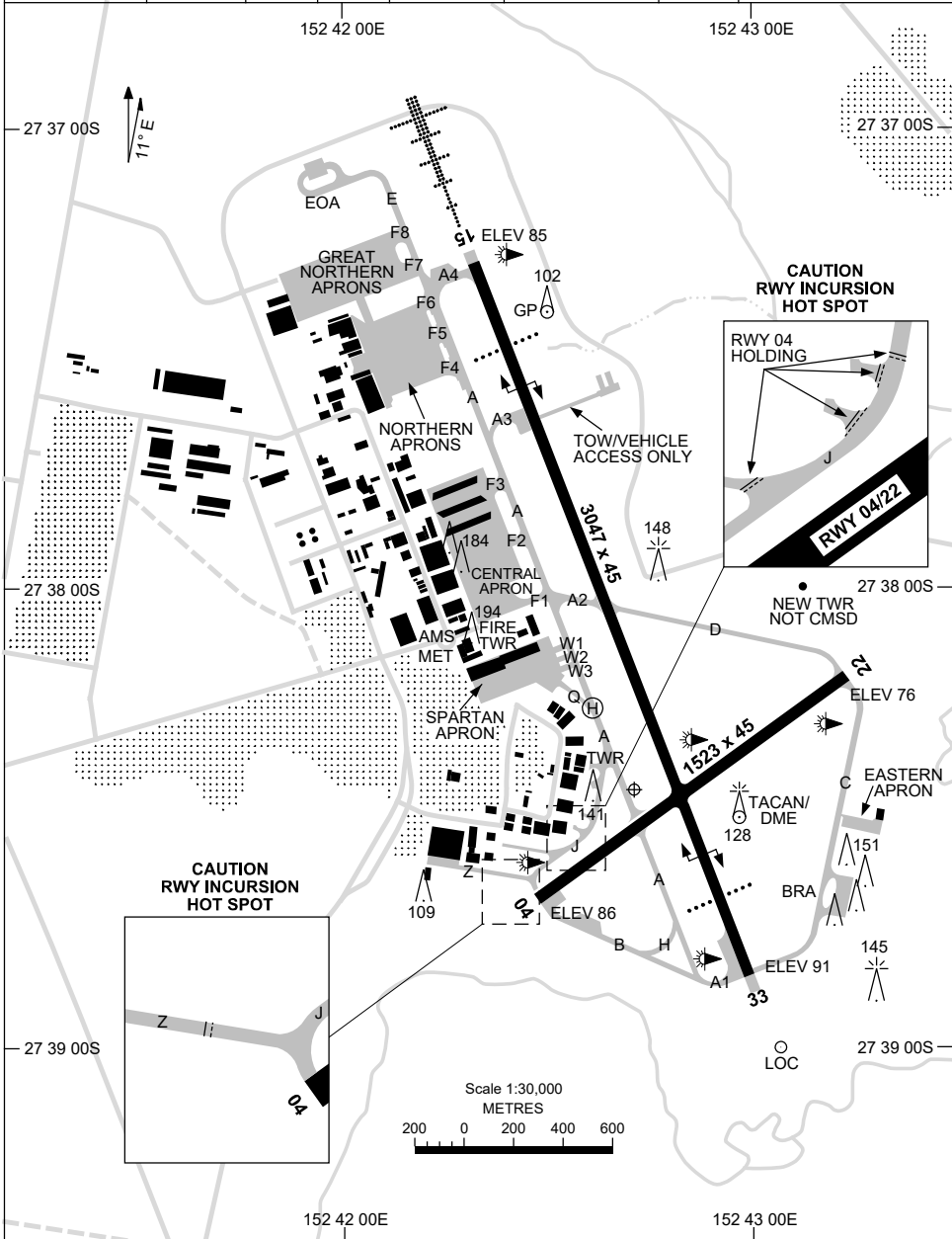


28 NOV 2024

AD ELEV 91
27 38 26S 152 42 43E

AERODROME CHART - Page 1
AMBERLEY, QLD (YAMB)

ATIS 123.3 316.2	AWIS (AH) 316.2	ACD 134.6	SMC 129.35	TWR 118.3 264.6	CTAF+AFRU (AH) AFRU+PAL 118.3	FIA (AH) 121.2	Bearings are Magnetic Elevations in FEET AMSL
---------------------	--------------------	--------------	---------------	--------------------	-------------------------------------	-------------------	--



Changes: Editorial.

AMBAD01-181

28 NOV 2024

AD ELEV 91
27 38 26S 152 42 43E

AERODROME CHART - Page 2
AMBERLEY, QLD (YAMB)

ATIS 123.3 316.2	AWIS (AH) 316.2	ACD 134.6	SMC 129.35	TWR 118.3 264.6	CTAF+AFRU (AH) AFRU+PAL 118.3	FIA (AH) 121.2	Bearings are Magnetic Elevations in FEET AMSL
AERODROME LIGHTING							
RWY	TAXIWAYS : GREEN CL. NIL ON B, H, J AND Q. RL : MAN , AFRU+PAL 118.3 , SDBY (7 SEC) , PTBL						
04 ⁰⁴³ 223 22	MIRL MIRL						
15 ¹⁴⁸ 328 33	PAPI 3.0° 57FT HIRL HIAL - CAT I SFL PAPI 3.0° 57FT HIRL						

NOTES

Changes: TWY LIGHTING.

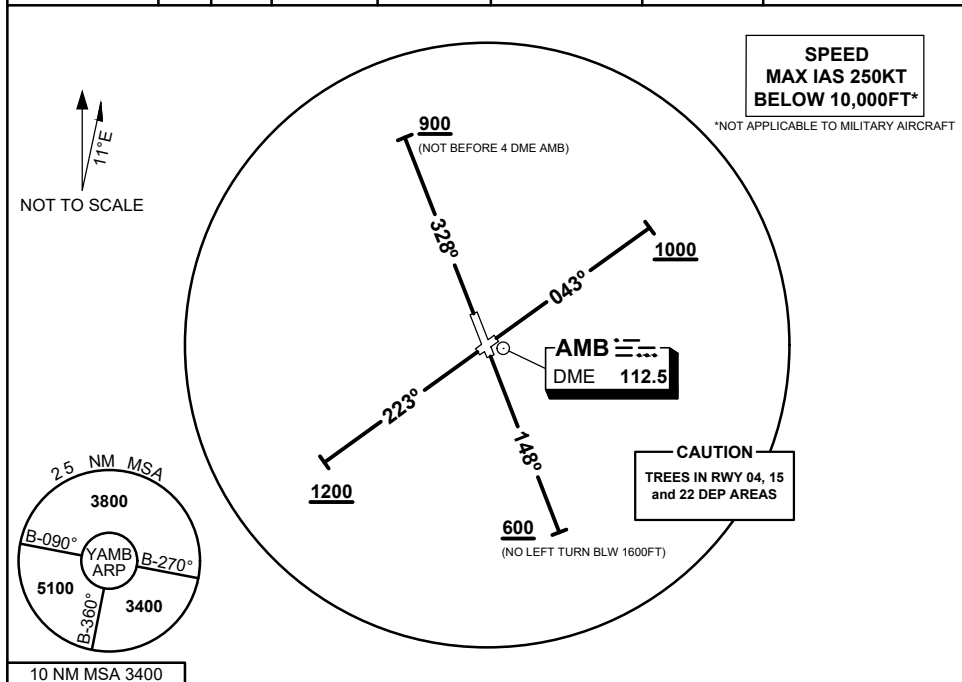
AMBAD02-181

**STANDARD INSTRUMENT DEPARTURES (SID)
AMBERLEY FOUR DEPARTURE (RADAR)**

AMBERLEY, QLD (YAMB)

04 SEP 2025

ATIS / AWIS (AH) 123.3 316.2	ACD 134.6	SMC 129.35	TWR 118.3 264.6	APP 126.2 335.8	CTAF+AFRU (AH) AFRU+PAL (AH) 118.3	FIA BN CEN 121.2	Bearings are Magnetic Elevations in FEET AMSL
--	---------------------	----------------------	---------------------------	---------------------------	---	----------------------------	--



AMBERLEY FOUR DEPARTURE

RWY 04

- GRAD 4.6% to 1000FT, thence 3.3%
- Track 043°
- AT or ABV 1000FT, but not before DER, turn to assigned heading or track

RWY 15

- GRAD 4.3% to 2700FT, thence 3.3%
- Track 148°
- AT or ABV 600FT, but not before DER, turn to assigned heading or track (NO LEFT TURN BLW 1600FT)

RWY 22

- GRAD 4.7% to 1200FT, thence 3.3%
- Track 223°
- AT or ABV 1200FT, but not before DER, turn to assigned heading or track

RWY 33

- GRAD 3.9% to 900FT, thence 3.3%
- Track 328°
- AT or ABV 900FT, but not before 4 DME AMB, turn to assigned heading or track

COMMUNICATIONS FAILURE PROCEDURE

On recognition of communication failure

- Squawk 7600.
- Maintain last assigned vector for two minutes, and
- CLIMB, if necessary, TO MINIMUM SAFE ALTITUDE to maintain terrain clearance, then
- Proceed in accordance with the latest ATC route clearance acknowledged.

Changes: FROM SUP H88/25

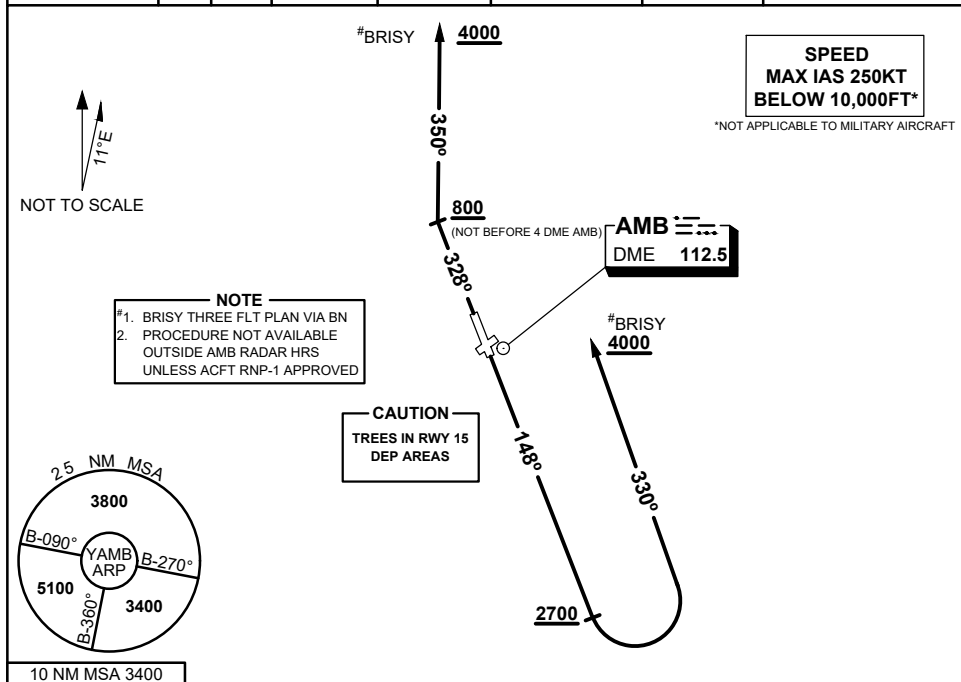
AMBDP01-184



**STANDARD INSTRUMENT DEPARTURES (SID)
RWY 15/33 BRISY THREE
AMBERLEY, QLD (YAMB)**

04 SEP 2025

ATIS / AWIS (AH) 123.3 316.2	ACD 134.6	SMC 129.35	TWR 118.3 264.6	APP 126.2 335.8	CTAF+AFRU (AH) AFRU+PAL (AH) 118.3	FIA BN CEN 121.2	Bearings are Magnetic Elevations in FEET AMSL
--	---------------------	----------------------	---------------------------	---------------------------	---	----------------------------	--



BRISY THREE DEPARTURE

RWY 15

- GRAD 4.3% to 2700FT, then 3.3%
- Track 148°
- When passing 2700FT, but not before DER, turn LEFT track 330°
- CLIMB to 4000FT
- Track as instructed

RWY 33

- GRAD 3.9% to 800FT, then 3.3%
- Track 328°
- When passing 800FT, but not before 4 DME AMB, turn RIGHT track 350°
- CLIMB to 4000FT
- Track as instructed

COMMUNICATIONS FAILURE PROCEDURE

On recognition of communication failure

- Squawk 7600.
- Maintain last assigned vector for two minutes, and
- CLIMB, if necessary, TO MINIMUM SAFE ALTITUDE to maintain terrain clearance, then
- Proceed in accordance with the latest ATC route clearance acknowledged.

Changes: FROM SUP H88/25

AMBDP02-184

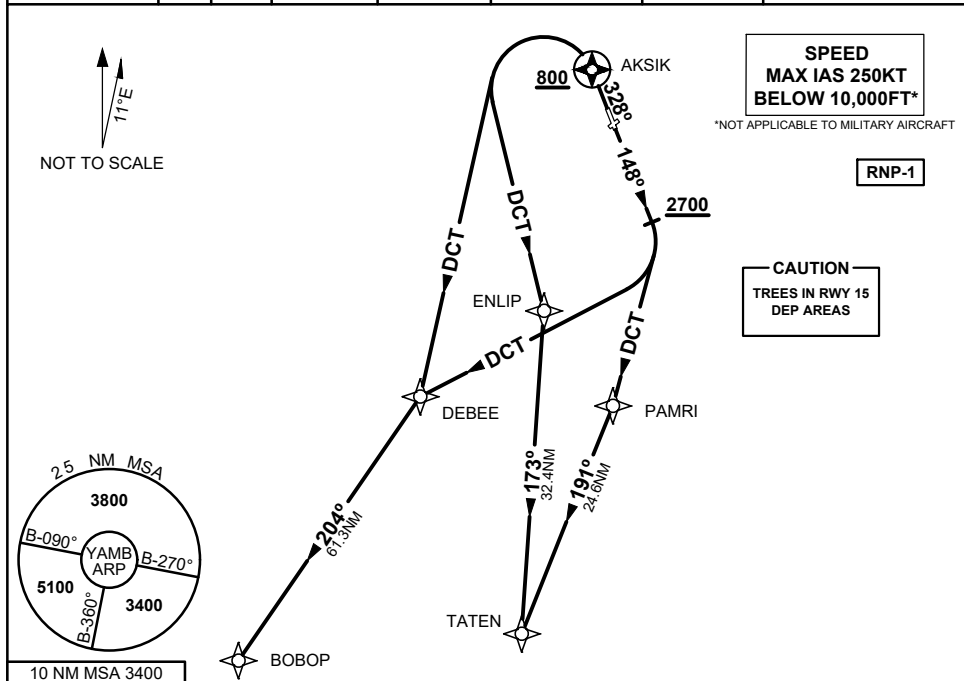


STANDARD INSTRUMENT DEPARTURES (SID)
RWY 15/33 SOUTH (RNAV)

AMBERLEY, QLD (YAMB)

04 SEP 2025

ATIS / AWIS (AH) 123.3 316.2	ACD 134.6	SMC 129.35	TWR 118.3 264.6	APP 126.2 335.8	CTAF+AFRU (AH) AFRU+PAL (AH) 118.3	FIA BN CEN 121.2	Bearings are Magnetic Elevations in FEET AMSL
---------------------------------	--------------	---------------	--------------------	--------------------	--	---------------------	--



BOBOP FIVE ALPHA DEPARTURE
TATEN TWO ALPHA DEPARTURE

RWY 15

- GRAD 4.3% to 2700FT, then 3.3%
- Track 148°
- When passing 2700FT, but not before DER

FOR BOBOP

- Turn RIGHT DCT to DEBEE
- Track 204° to BOBOP
- Thence as cleared

FOR TATEN

- Turn RIGHT DCT to PAMRI
- Track 191° to TATEN
- Thence as cleared

RWY 33

- GRAD 3.9% to 800FT, then 3.3%
- Track 328° to AKSIK
- AT AKSIK, but not BLW 800FT

FOR BOBOP

- Turn LEFT DCT to DEBEE
- Track 204° to BOBOP
- Thence as cleared

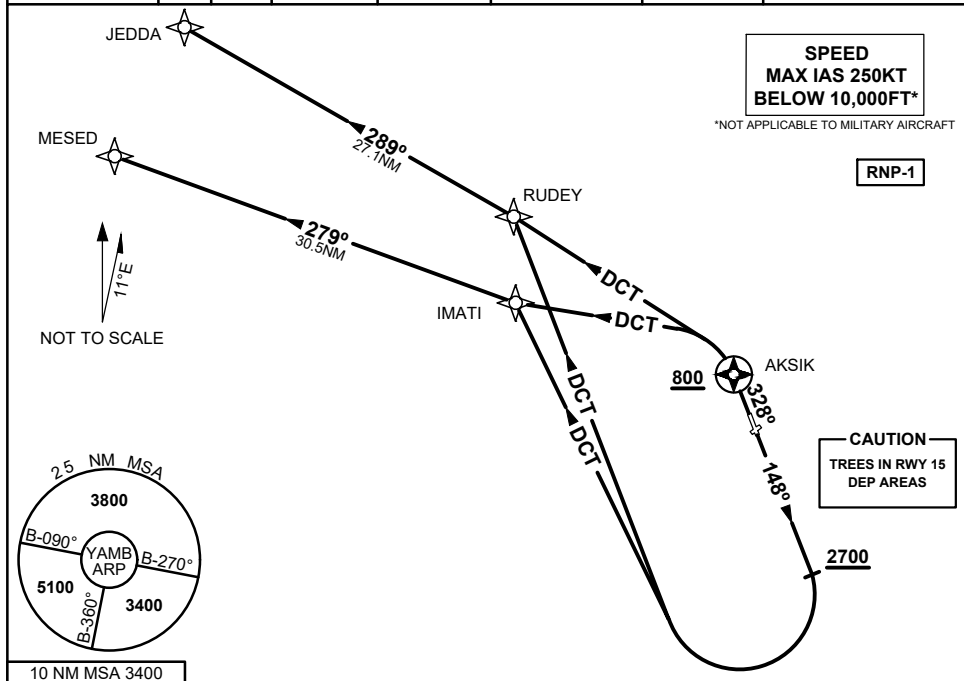
FOR TATEN

- Turn LEFT DCT to ENLIP
- Track 173° to TATEN
- Thence as cleared

**STANDARD INSTRUMENT DEPARTURES (SID)
RWY 15/33 NORTH WEST (RNAV)
AMBERLEY, QLD (YAMB)**

04 SEP 2025

ATIS / AWIS (AH) 123.3 316.2	ACD 134.6	SMC 129.35	TWR 118.3 264.6	APP 126.2 335.8	CTAF+AFRU (AH) AFRU+PAL (AH) 118.3	FIA BN CEN 121.2	Bearings are Magnetic Elevations in FEET AMSL
--	---------------------	----------------------	---------------------------	---------------------------	---	----------------------------	--



JEDDA FIVE ALPHA DEPARTURE
MESED FIVE ALPHA DEPARTURE

RWY 15

- GRAD 4.3% to 2700FT, then 3.3%
- Track 148°
- When passing 2700FT, but not before DER

FOR JEDDA

- Turn RIGHT DCT to RUDEY
- Track 289° to JEDDA
- Thence as cleared

FOR MESED

- Turn RIGHT DCT to IMATI
- Track 279° to MESED
- Thence as cleared

RWY 33

- GRAD 3.9% to 800FT, then 3.3%
- Track 328° to AKSIK
- AT AKSIK, but not BLW 800FT

FOR JEDDA

- Turn LEFT DCT to RUDEY
- Track 289° to JEDDA
- Thence as cleared

FOR MESED

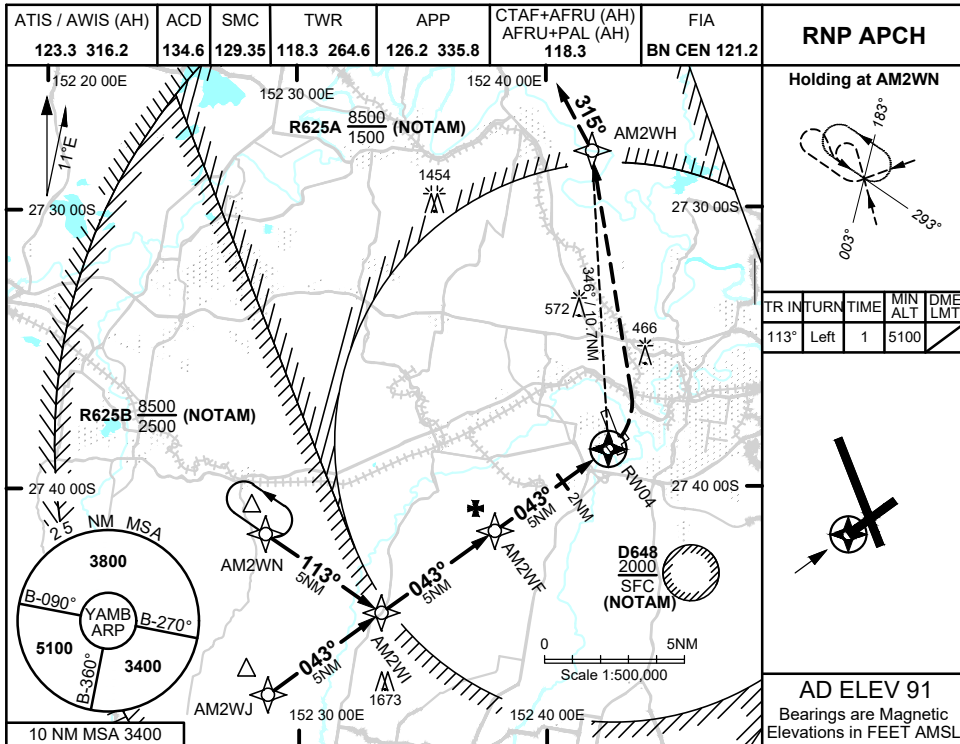
- Turn LEFT DCT to IMATI
- Track 279° to MESED
- Thence as cleared

Changes: FROM SUP H88/25

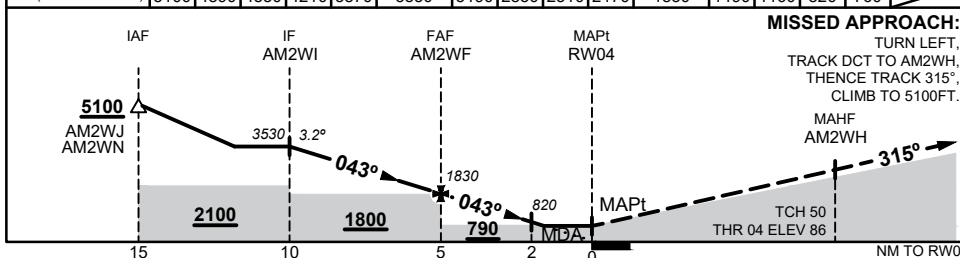
AMBDP04-184



19 MAR 2026



NM TO NEXT WPT	4.6	4.0	3	2	1	AM2WI	4	3	2	1	AM2WF	4	3	2	1.8	RW04
ALT (3.2° APCH PATH)	5100	4890	4550	4210	3870	3530	3190	2850	2510	2170	1830	1490	1160	820	760	



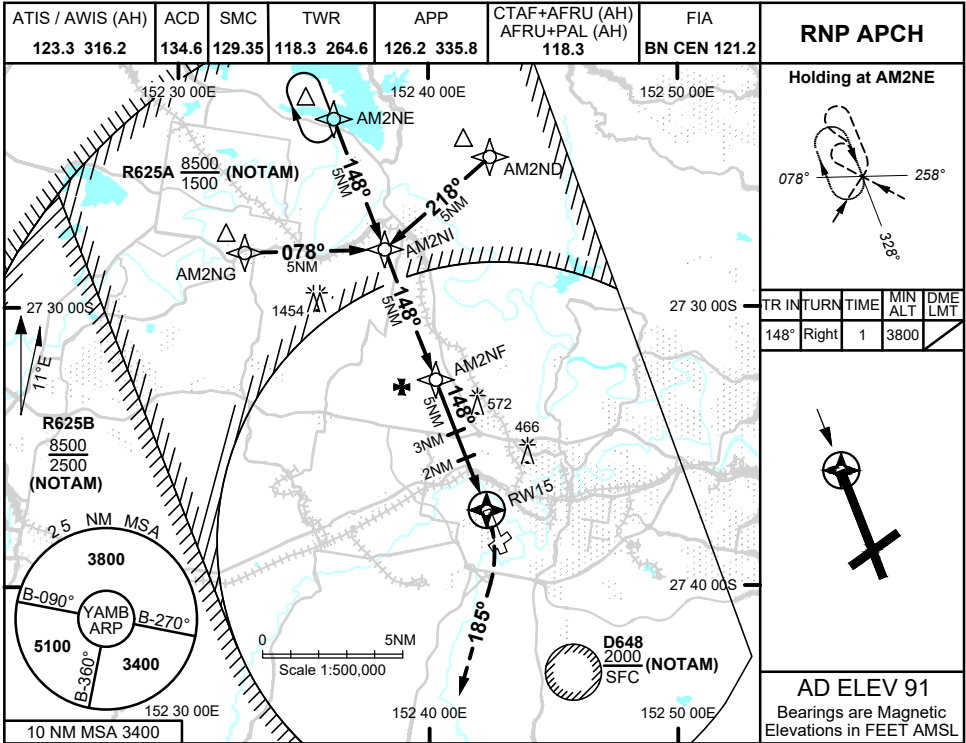
- NOTES**
- MAX IAS:
INITIAL : 210KTS

CATEGORY	A	B	C	D
LNAV	760 (669 - 3.6) (VIS 3.0 WITH ACTUAL QNH)			
CIRCLING	890 (799 - 2.4)	1090 (999 - 4.0)	1550 (1459 - 5.0)	
ALTERNATE	(1299 - 4.4)	(1499 - 6.0)	(1959 - 7.0)	

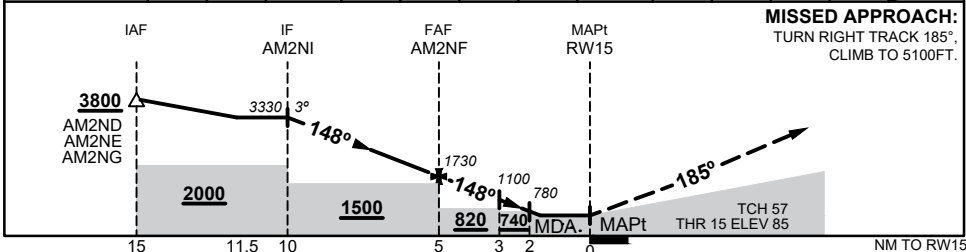
Changes: CAT A&B Circling Minima

AMBGN01-186

19 MAR 2026



NM TO NEXT WPT	1.5	1.0	AM2NI	4	3	2	1	AM2NF	4	3	2	1.9	RW15
ALT (3° APCH PATH)	3800	3640	3330	3010	2690	2370	2050	1730	1420	1100	780	740	



NOTES

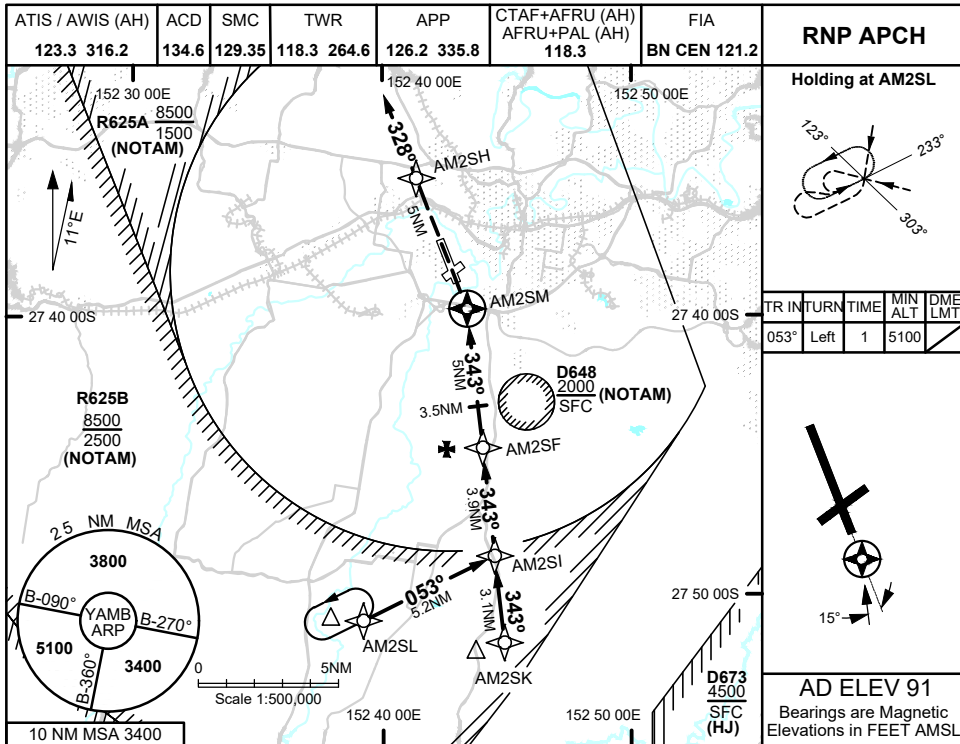
1. MAX IAS:
INITIAL : 210KTS
2. HOLDING NOT CONTAINED WITHIN MIL RSTD AREAS WHEN ACT

CATEGORY	A	B	C	D
LNAV	740 (649 - 2.7) (VIS 2.1 WITH ACTUAL QNH)			
CIRCLING	890 (799 - 2.4)	1090 (999 - 4.0)	1550 (1459 - 5.0)	
ALTERNATE	(1299 - 4.4)	(1499 - 6.0)	(1959 - 7.0)	

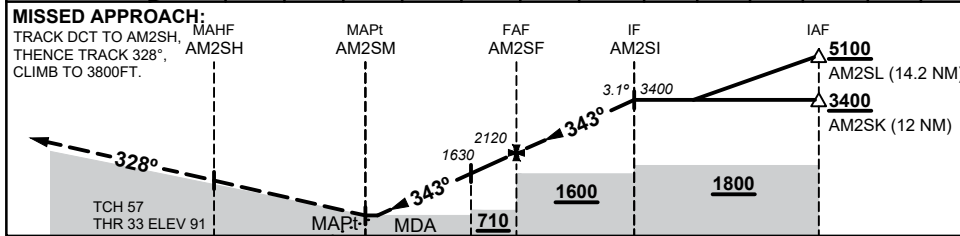
Changes: CAT A&B Circling Minima

AMBGN02-186

19 MAR 2026



NM TO NEXT WPT	AM2SM	0.6	1	2	3	3.5	4	AM2SF	1	2	3	AM2SI	5.2	
ALT (3.1° APCH PATH)		690	810	1140	1460	1630	1790	2120	2450	2780	3110	3400	5100	



NOTES

1. MAX IAS:
INITIAL : 210KTS
2. STRAIGHT INITIAL AND MISSED APPROACH NOT CONTAINED WITHIN MIL RSTD AREAS WHEN ACT

CATEGORY	A	B	C	D
LNAV	690 (599 - 3.2)		(VIS 2.7 WITH ACTUAL QNH)	
CIRCLING	890 (799 - 2.4)		1090 (999 - 4.0)	1550 (1459 - 5.0)
ALTERNATE	(1299 - 4.4)		(1499 - 6.0)	(1959 - 7.0)

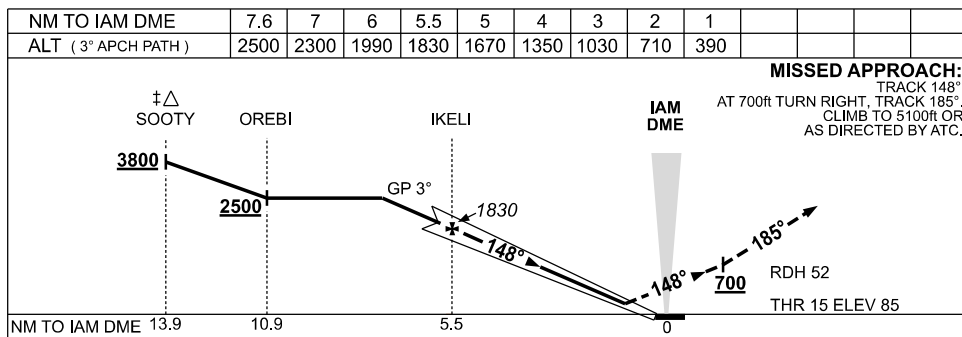
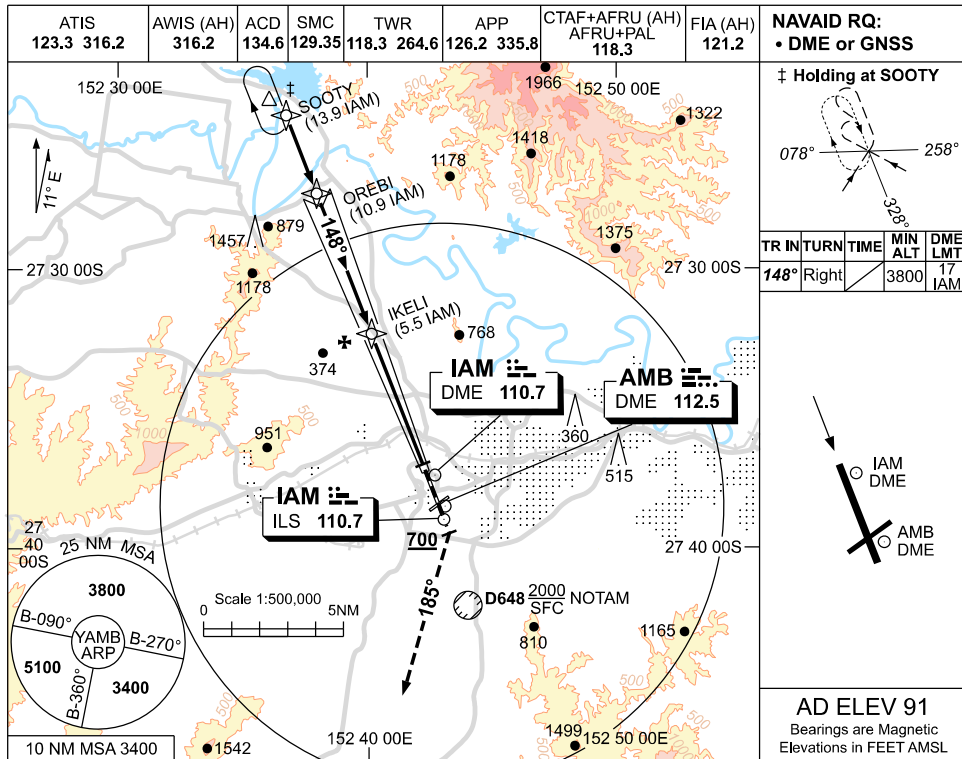
Changes: CAT A&B Circling Minima

AMBGN03-186

USE QNH

ILS-Z RWY 15
AMBERLEY, QLD (YAMB)

19 MAR 2026



CATEGORY	A	B	C	D
S-I ILS	390 (305) 0.8			
CIRCLING*	870 (779-2.4)		1090 (999-4.0) 1550 (1459-5.0)	
ALTERNATE	(1279-4.4)		(1499-6.0) (1959-7.0)	

NOTES

1. MAX IAS:
HOLDING: 190KT
2. SOOTY HOLDING PROTECTION AREA NOT CONTAINED WITHIN AMB RESTRICTED AIRSPACE.
3. COLOUR : SEE SPEC NOTICES.

Changes: CIRCLING MINIMA, NO CIRCLING AREA REMOVED, Editorial.

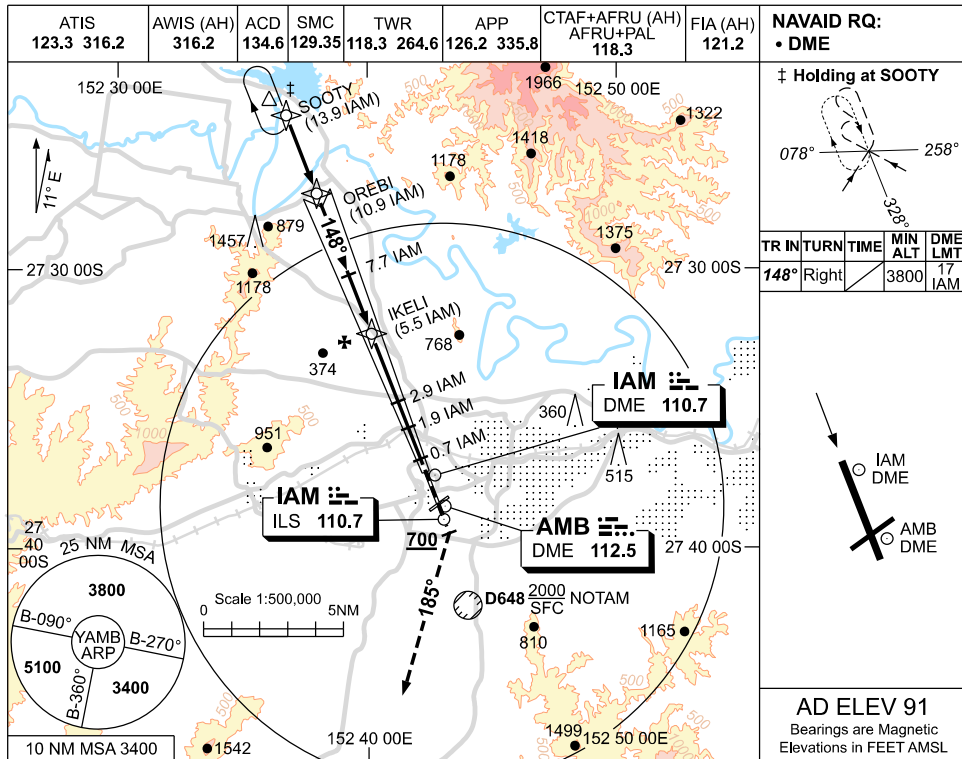
AMBII01-186

USE QNH

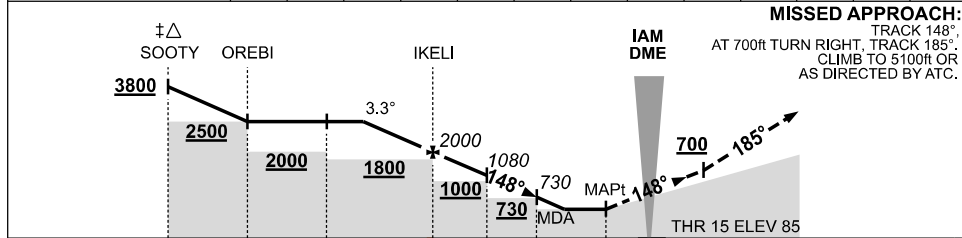
LOC-Z RWY 15

AMBERLEY, QLD (YAMB)

19 MAR 2026



NM TO IAM DME	6.9	6	5.5	5	4	2.9	1.9	1.7				
ALT (3.3° APCH PATH)	2500	2170	2000	1820	1470	1080	730	660				



CATEGORY	A	B	C	D
S-I LOC/DME	660 (569-2.0)			
CIRCLING *	870 (779-2.4)		1090 (999-4.0)	
ALTERNATE	(1279-4.4)		(1959-7.0)	

NOTES

- MAX IAS:
HOLDING: 190KLT,
- SOOTY HOLDING PROTECTION AREA NOT CONTAINED WITHIN AMB RESTRICTED AIRSPACE.
- APCH PATH ANGLE DOES NOT COINCIDE WITH PAPI ON GLIDE SLOPE INDICATION.
- COLOUR: SEE SPEC NOTICES.

Changes: CIRCLING MINIMA, NO CIRCLING AREA REMOVED, Editorial. AMBLZ01-186