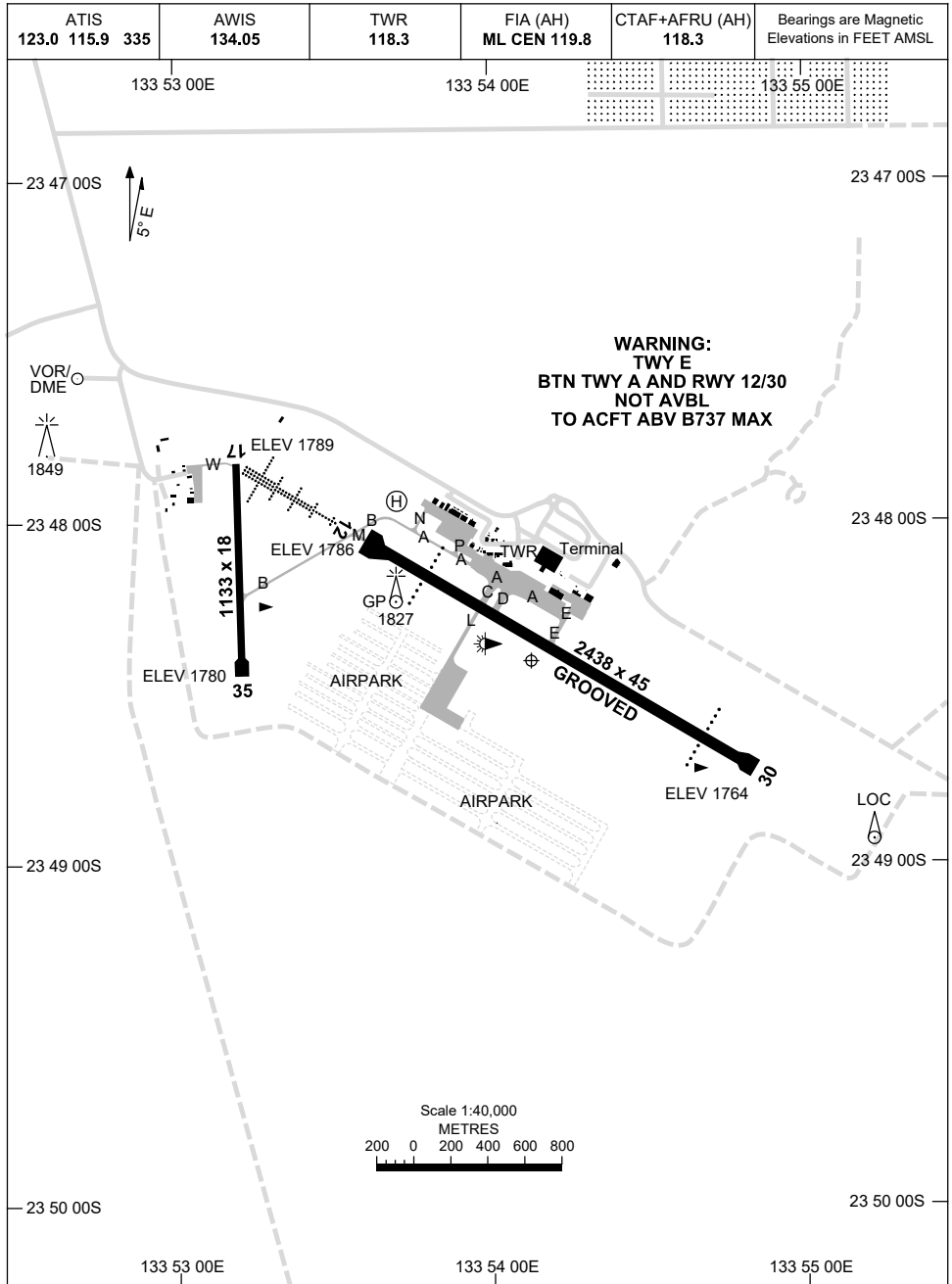


20 MAR 2025

AD ELEV 1789
23 48 24S 133 54 08E

AERODROME CHART - Page 1
ALICE SPRINGS, NT (YBAS)



Changes: ARP COORDINATE CORRECTION.

BASAD01-182

20 MAR 2025

AD ELEV 1789
23 48 24S 133 54 08E

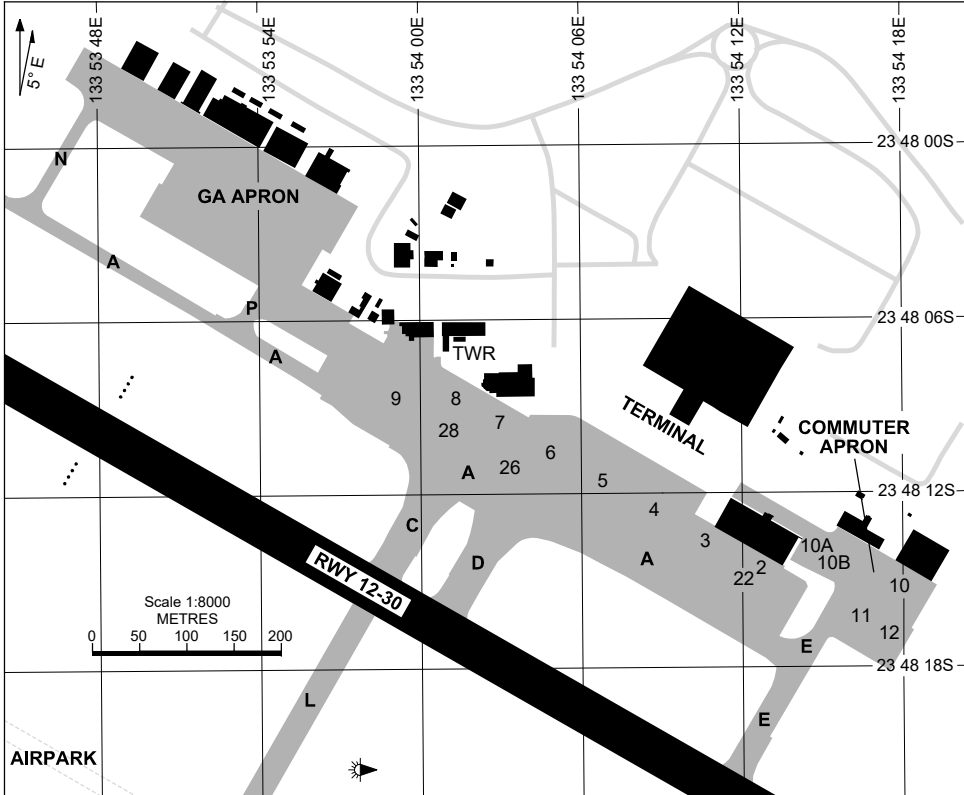
AERODROME CHART - Page 2
ALICE SPRINGS, NT (YBAS)

ATIS 123.0 115.9 335	AWIS 134.05	TWR 118.3	FIA (AH) ML CEN 119.8	CTAF+AFRU (AH) 118.3	Bearings are Magnetic Elevations in FEET AMSL
AERODROME LIGHTING					
RWY	TAXIWAY : SOLAR TWY B, M. BLUE REFLECTIVE EDGE TWY A, B (BTN M AND RPT APRON), RL : MAN , SDBY (15 SEC)				
12 ¹¹⁶ 296 30	PAPI 3.0° 49FT MIRL HIRL HIAL-CAT I PTBL PAPI 3.0° 49FT MIRL PTBL				
17 ¹⁷⁴ 354 35	PTBL PTBL				

NOTES

1. RWY 17/35 PTBL - SOLAR LIGHTING FOR HN AND EMERG OPR ONLY.

28 NOV 2024



PARKING POSITION INFORMATION

STAND	CO-ORDINATES		ELEV (ft)	CAPACITY	HYDRANT FUEL	DOCKING SYSTEM
2	23 48 14.06S	133 54 12.59E	1778	B738/A320	NIL	MARSHALLED
3	23 48 13.03S	133 54 10.66E	1777	B738/A320	NIL	MARSHALLED
4	23 48 12.00S	133 54 08.74E	1777	B738/A320	NIL	MARSHALLED
5	23 48 10.96S	133 54 06.82E	1777	B738/A320	NIL	MARSHALLED
6	23 48 09.93S	133 54 04.90E	1780	B738/A320	NIL	MARSHALLED
7	23 48 08.90S	133 54 02.97E	1781	B738/A320	NIL	MARSHALLED
8	23 48 08.05S	133 54 01.40E	1781	E190	NIL	MARSHALLED
9	23 48 08.04S	133 53 59.12E	1781	B772/B763	NIL	MARSHALLED
10	23 48 14.66S	133 54 17.89E	1776	DH8C	NIL	MARSHALLED
10A	23 48 13.23S	133 54 14.49E	1777	SW4	NIL	MARSHALLED
10B	23 48 13.53S	133 54 15.11E	1777	SW4	NIL	MARSHALLED
11	23 48 15.69S	133 54 16.50E	1774	DH8C/FA7X	NIL	MARSHALLED
12	23 48 16.24S	133 54 17.54E	1774	DH8C/FA7X	NIL	MARSHALLED
22	23 48 14.37S	133 54 12.24E	1777	B738/A320	NIL	MARSHALLED
26	23 48 10.48S	133 54 03.35E	1779	A380/B744	NIL	MARSHALLED
28	23 48 09.26S	133 54 01.08E	1780	A380/B744	NIL	MARSHALLED

NOTE: SOME SECONDARY BAYS OBSTRUCT PRIMARY BAYS.

DME or GNSS ARRIVAL PROCEDURES ALICE SPRINGS, NT (YBAS)

27 NOV 2025

ATIS 123.0 115.9 335	AWIS 134.05	TWR 118.3	FIA (AH) ML CEN 119.8	CTAF+AFRU (AH) 118.3	Bearings are Magnetic Elevations in FEET AMSL
-------------------------	----------------	--------------	--------------------------	-------------------------	--

25 NM MSA
5200
AS VOR or NDB

**DME USING AS DME
REFERENCE WAYPOINT AS VOR**

* NO CIRCLING
3 NM
AD ELEV 1789

AS: NDB 335

AS: VOR/DME 115.9

* NO CIRCLING N OF RWY 12 / 30 BEYOND 3NM.

10 NM MSA 4300

SECTOR A

AS VOR or NDB

VOR or NDB

MISSED APPROACH:

TURN AS REQ,
TRACK 210 FM AS
VOR OR NDB,
CLIMB TO 5200ft.

NM TO AS VOR	25	17	15	8	5	0												
CIRCLING MINIMA	A,B: 3800-2.4			C: 3800-4.0		D: 3800-5.0												
NM TO AS VOR	7.1	6	5	4	3	2.7												
ALT (3° APCH PATH)	5200	4860	4550	4230	3910	3800												

SECTOR B

AS VOR or NDB

VOR or NDB

MISSED APPROACH:

TURN AS REQ,
TRACK 310 FM AS
VOR OR NDB,
CLIMB TO 5200ft.

NM TO AS VOR	25	17		12	7	5	0											
CIRCLING MINIMA	A,B: 2870-2.4			C: 3300-4.0		D: 3400-5.0												
NM TO AS VOR	8.8	8	7	6	5	4	3.1	2.8	2	1.4								
ALT (3° APCH PATH)	5200	4960	4640	4320	4000	3680	3400	3300	3040	2870								

SECTOR C

AS VOR or NDB

VOR or NDB

MISSED APPROACH:

TURN AS REQ,
TRACK 210 FM AS
VOR OR NDB,
CLIMB TO 5200ft

MAX IAS: MISSED
APCH TURN 185KT

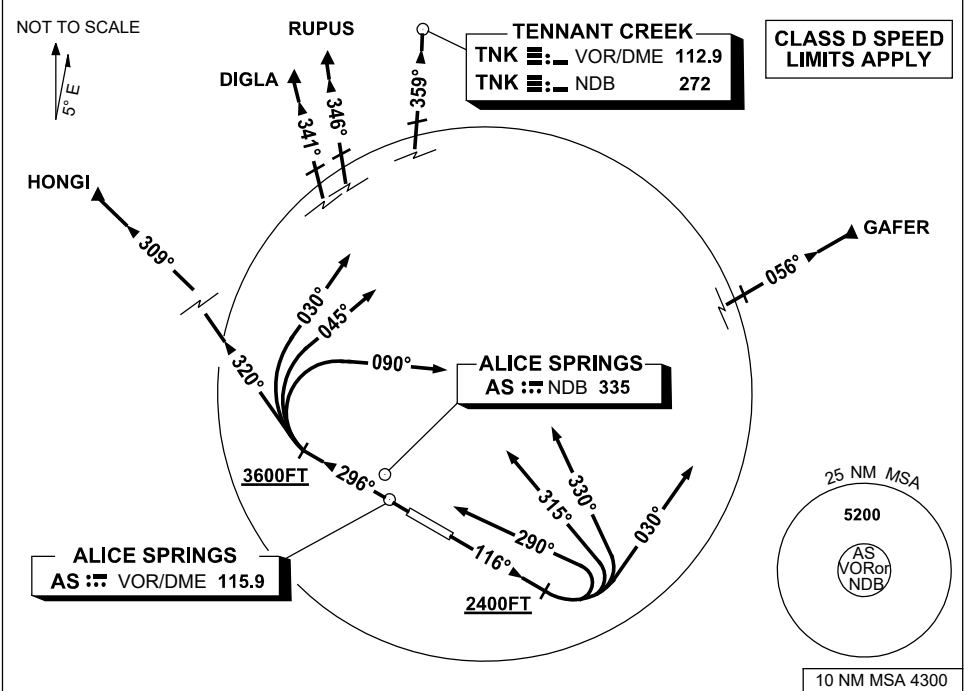
NM TO AS VOR	25	17	15	12		5	0											
CIRCLING MINIMA	A,B: 3160-2.4			C: 3300-4.0		D: 3400-5.0												
NM TO AS VOR	8.8	8	7	6	5	4	3.1	3	2.8	2.4								
ALT (3° APCH PATH)	5200	4960	4640	4320	4000	3680	3400	3360	3300	3160								

Changes: MISSED APCH INSTRUCTIONS, SECT B TRACK, SECT C MISSED APCH SPEED RESTRICTION. BASDGO1-185

**STANDARD INSTRUMENT DEPARTURES (SID)
RWY 12/30 NORTH
ALICE SPRINGS, NT (YBAS)**

30 NOV 2023

ATIS 123.0 115.9 335	AWIS 134.05	TWR 118.3	FIA (AH) ML CEN 119.8	CTAF+AFRU (AH) 118.3	Bearings are Magnetic Elevations in FEET AMSL
-------------------------	----------------	--------------	--------------------------	-------------------------	--



<p>DIGLA RUPUS TENNANT CREEK (TNK) THREE DEPARTURE</p> <p>ALICE SPRINGS (AS) ONE DEPARTURE</p> <p>HONGI THREE DEPARTURE</p> <p>ALICE SPRINGS (AS) THREE DEPARTURE</p> <p>RWY 30 GRAD 3.8% TO 3600ft THENCE 3.3%</p> <ul style="list-style-type: none"> Track 296° At or ABV 3600ft but not before abeam AS VOR or AS NDB turn RIGHT <p>For HONGI</p> <ul style="list-style-type: none"> Track 320° Intercept cleared route <p>For DIGLA and RUPUS</p> <ul style="list-style-type: none"> Track 030° Intercept cleared route <p>For TNK</p> <ul style="list-style-type: none"> Track 045° Intercept cleared route <p>For GAFER</p> <ul style="list-style-type: none"> Track 090° Intercept cleared route 	<p>GAFER THREE DEPARTURE</p> <p>HONGI THREE DEPARTURE</p> <p>RWY 12 GRAD 3.3%</p> <ul style="list-style-type: none"> Track 116° At or ABV 2400ft turn LEFT <p>For HONGI</p> <ul style="list-style-type: none"> Track 290° Intercept cleared route <p>For DIGLA and RUPUS</p> <ul style="list-style-type: none"> Track 315° Intercept cleared route <p>For TNK</p> <ul style="list-style-type: none"> Track 330° Intercept cleared route <p>For GAFER</p> <ul style="list-style-type: none"> Track 030° Intercept cleared route
--	---

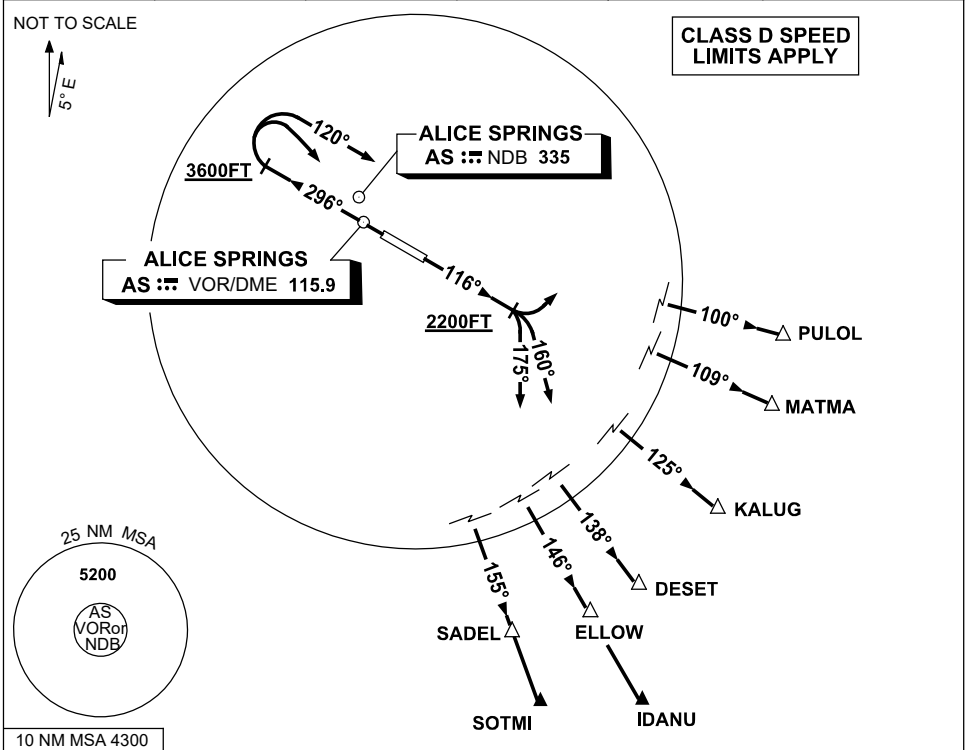
Changes: RUPUS REPLACES SCOTI, Editorial.

BASDP01-177

**STANDARD INSTRUMENT DEPARTURES (SID)
RWY 12/30 SOUTH EAST
ALICE SPRINGS, NT (YBAS)**

30 NOV 2023

ATIS 123.0 115.9 335	AWIS 134.05	TWR 118.3	FIA (AH) ML CEN 119.8	CTAF+AFRU (AH) 118.3	Bearings are Magnetic Elevations in FEET AMSL
-------------------------	----------------	--------------	--------------------------	-------------------------	--



<p>PULOL THREE DEPARTURE</p> <p>MATMA ONE DEPARTURE</p> <p>KALUG THREE DEPARTURE</p> <p>SADEL FOUR DEPARTURE</p> <p>RWY 30 GRAD 3.8% TO 3600ft THENCE 3.3%</p> <ul style="list-style-type: none"> Track 296° At or ABV 3600ft but not before abeam AS VOR or NDB turn RIGHT <p>For PULOL and MATMA</p> <ul style="list-style-type: none"> Track 120° Intercept cleared route <p>For KALUG, DESET, IDANU, ELLOW, SADEL and SOTMI</p> <ul style="list-style-type: none"> Track DCT to AS VOR or AS NDB Overhead AS VOR or AS NDB Intercept cleared route 	<p>IDANU THREE DEPARTURE</p> <p>DESET FOUR DEPARTURE</p> <p>ELLOW THREE DEPARTURE</p> <p>SOTMI ONE DEPARTURE</p> <p>RWY 12 GRAD 3.3%</p> <ul style="list-style-type: none"> Track 116° At or ABV 2200ft <p>For PULOL and MATMA</p> <ul style="list-style-type: none"> Turn LEFT Intercept cleared route <p>For KALUG, DESET and IDANU</p> <ul style="list-style-type: none"> Turn RIGHT Track 160° Intercept cleared route <p>For ELLOW, SADEL and SOTMI</p> <ul style="list-style-type: none"> Turn RIGHT Track 175° Intercept cleared route
--	--

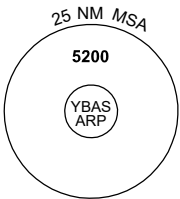
Changes: SOTMI REPLACES SARAH, MATMA REPLACES STEEL, Editorial. BASDP02-177

STANDARD INSTRUMENT DEPARTURES (SID)
RWY 12/30 WEST (RNAV)
ALICE SPRINGS, NT (YBAS)

30 NOV 2023

ATIS 123.0 115.9 335	AWIS 134.05	TWR 118.3	FIA (AH) ML CEN 119.8	CTAF+AFRU (AH) 118.3	Bearings are Magnetic Elevations in FEET AMSL
-------------------------	----------------	--------------	--------------------------	-------------------------	--

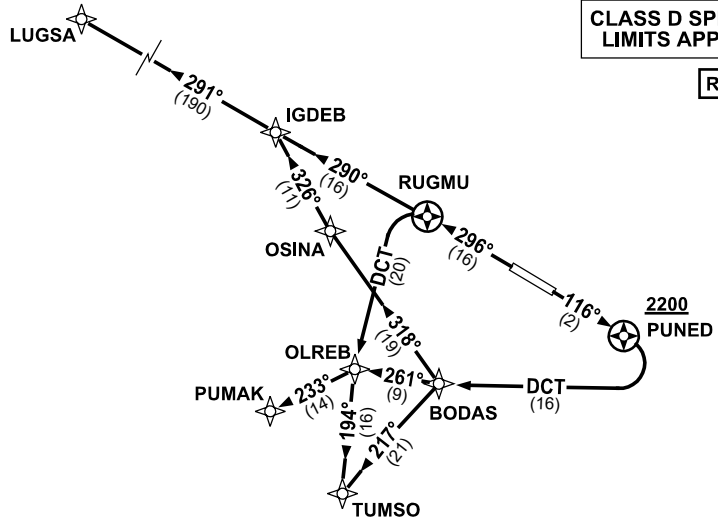
NOT TO SCALE



10 NM MSA 4300

CLASS D SPEED LIMITS APPLY

RNP 1



TUMSO ONE DEPARTURE
PUMAK ONE DEPARTURE
LUGSA ONE DEPARTURE

RWY 30

- GRAD 3.9% TO 3300ft thence 3.3%
- Track 296° to RUGMU
- FROM RUGMU**
- For LUGSA
- Track 290° to IGDEB
- Track 291° to LUGSA, thence as cleared
- For PUMAK
- Turn LEFT, track DCT to OLREB
- Turn RIGHT, track 233° to PUMAK, thence as cleared
- For TUMSO
- Turn LEFT, track DCT to OLREB,
- Track 194° to TUMSO, thence as cleared

RWY 12

- GRAD 3.3%
- Track 116° to PUNED
- Cross PUNED AT or ABV 2200FT**
- Turn RIGHT, track DCT to BODAS
- FROM BODAS**
- For TUMSO
- Turn LEFT, track 217° to TUMSO thence as cleared
- For PUMAK
- Track 261° to OLREB
- Turn LEFT, track 233° to PUMAK, thence as cleared
- For LUGSA
- Turn RIGHT, track 318° to OSINA
- Turn RIGHT, track 326° to IGDEB,
- Turn LEFT, track 291° to LUGSA, thence as cleared

Changes: LUGSA REPLACES LEESA, Editorial.

**FOR CASA APPROVED OPERATORS ONLY
USE QNH**

OCTAV SIX DEPARTURE

ALICE SPRINGS, NT (YBAS)

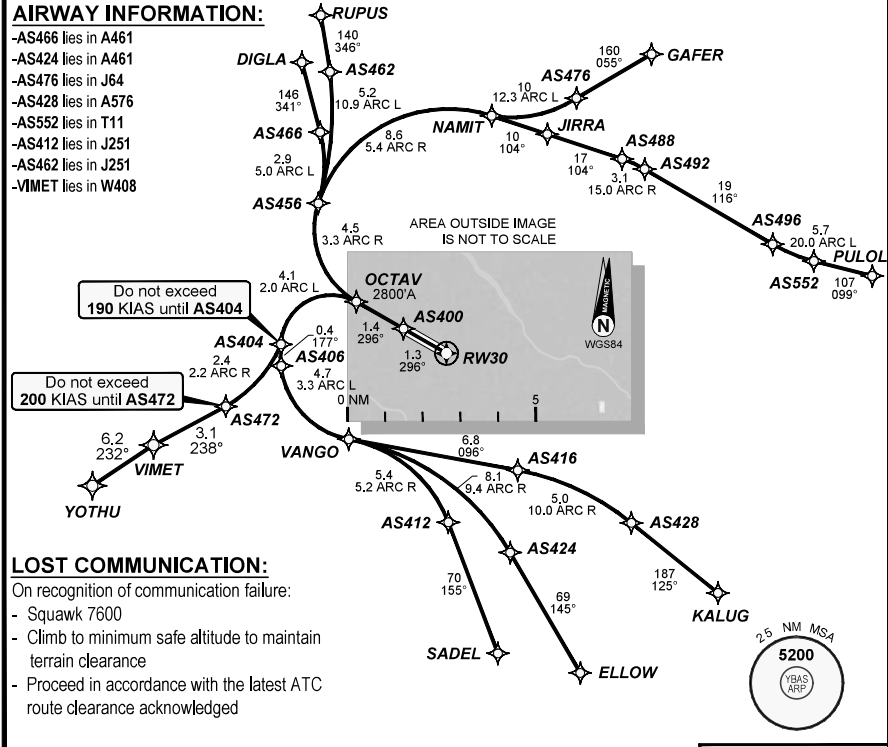
27 NOV 2025

Apt Elev	Trans ALT	ATIS	AWIS	TWR	FIA (AH)	CTAF + AFRU (AH)
1789'	10000'	123.0 115.9 335	134.05	118.3	ML CEN 119.8	118.3

OCTAV SIX RNAV (RNP) DEPARTURE RNP 0.30 (OCTAV6.OCTAV) RWY 30	GRAD 3.7% to 2900ft then 3.3%

TAKE-OFF:
RWY 30: Fly the RNAV (RNP) track to **OCTAV** and cross **OCTAV** at or above **2800'**. Thence:

TRANSITIONS:
(OCTAV6.DIGLA): Fly the RNAV (RNP) track to **DIGLA**.
(OCTAV6.ELLOW): Fly the RNAV (RNP) track to **ELLOW**. Do not exceed **190 KIAS** until **AS404**.
(OCTAV6.GAFER): Fly the RNAV (RNP) track to **GAFER**.
(OCTAV6.KALUG): Fly the RNAV (RNP) track to **KALUG**. Do not exceed **190 KIAS** until **AS404**.
(OCTAV6.PULOL): Fly the RNAV (RNP) track to **PULOL**.
(OCTAV6.SADEL): Fly the RNAV (RNP) track to **SADEL**. Do not exceed **190 KIAS** until **AS404**.
(OCTAV6.RUPUS): Fly the RNAV (RNP) track to **RUPUS**.
(OCTAV6.YOTHU): Fly the RNAV (RNP) track to **YOTHU**. Do not exceed **190 KIAS** until **AS404**.
 Do not exceed **200 KIAS** until **AS472**.



LOST COMMUNICATION:
 On recognition of communication failure:
 - Squawk 7600
 - Climb to minimum safe altitude to maintain terrain clearance
 - Proceed in accordance with the latest ATC route clearance acknowledged

DO NOT USE FOR NAVIGATION

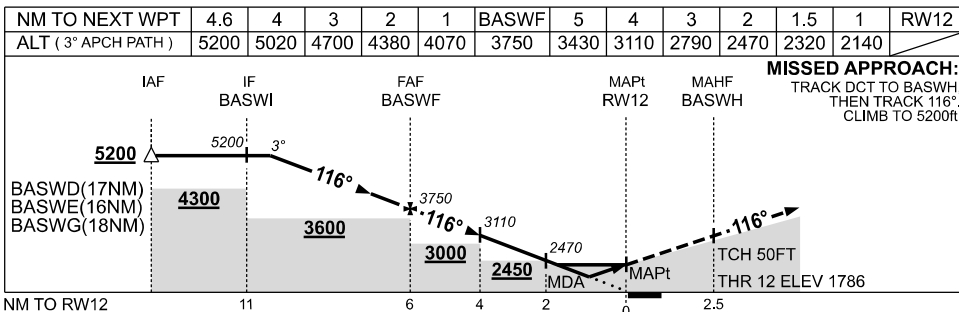
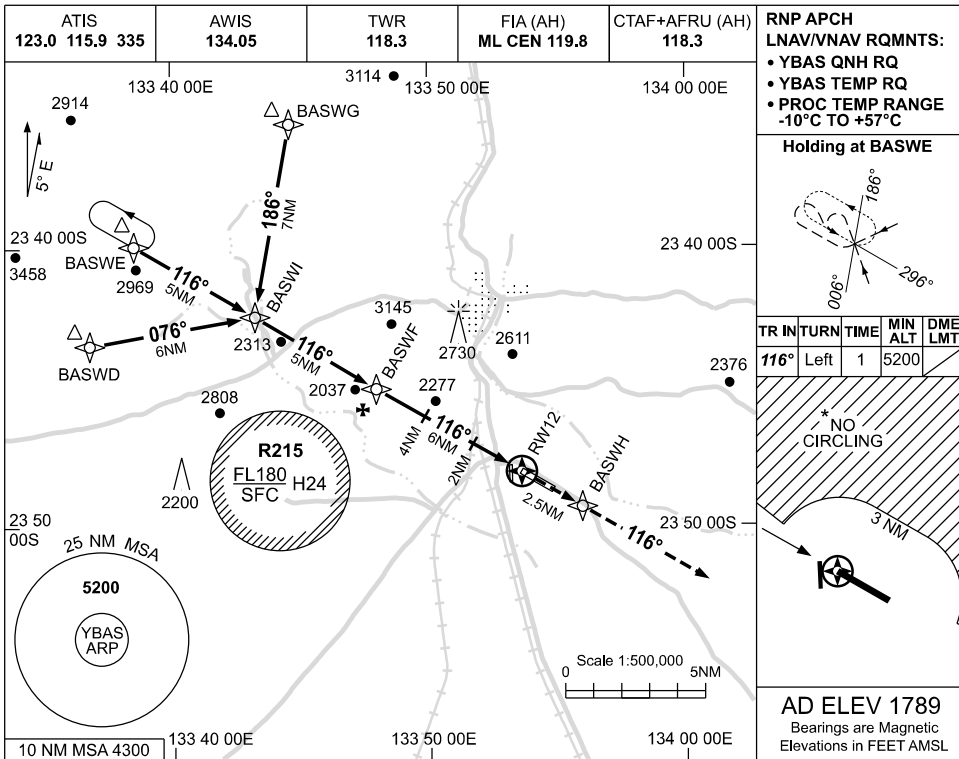


USE QNH

RNP Z RWY 12

27 NOV 2025

ALICE SPRINGS, NT (YBAS)



NOTES

CATEGORY	A	B	C	D
LNAV/VNAV		2140	(354-1.1)	
LNAV		2320	(531-2.1)	
CIRCLING *	2570	(781-2.4)	2990	(1201-4.0) 2990 (1201-5.0)
ALTERNATE		(1281-4.4)	(1701-6.0)	(1701-7.0)

- *1. NO CIRCLING NORTH OF RWY 12 / 30 BEYOND 3NM.
- 2. CTA CONTAINMENT NOT ASSURED WHEN HOLDING AT OR BLW 6500ft.

Changes: 6NM-4NM MNM ALT, 4NM-2NM MNM ALT.

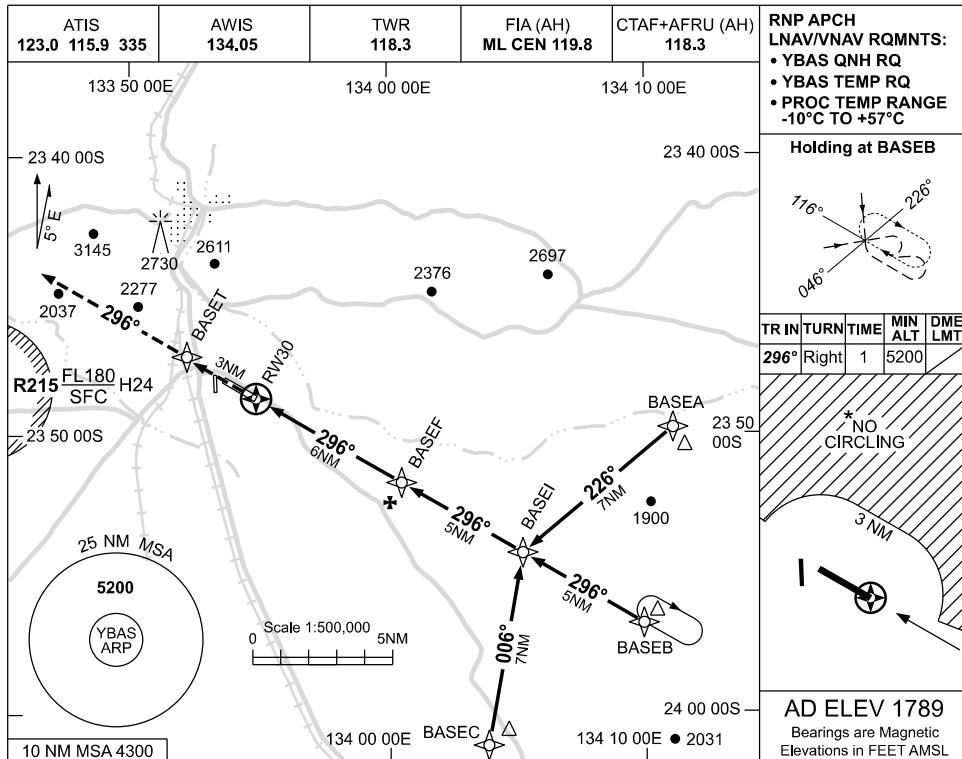
BASGN01-185

USE QNH

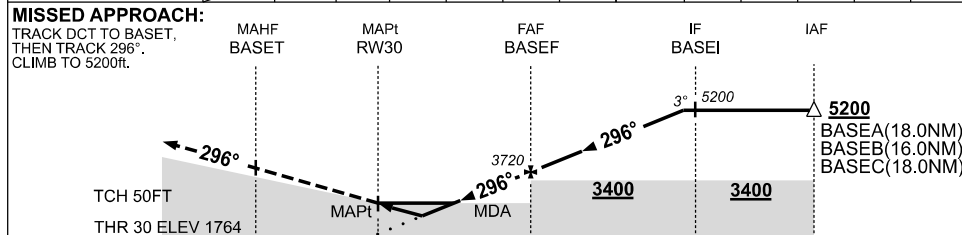
RNP Z RWY 30

27 NOV 2025

ALICE SPRINGS, NT (YBAS)



NM TO NEXT WPT	RW30	0.9	1.4	2	3	4	5	BASEF	1	2	3	4	4.6
ALT (3° APCH PATH)		2090	2270	2450	2770	3090	3410	3720	4040	4360	4680	5000	5200



NOTES

CATEGORY	A	B	C	D
LNAV/VNAV		2090 (326-1.8)		
LNAV		2270 (506-2.9)		
CIRCLING *	2570 (781-2.4)		2990 (1201-4.0)	2990 (1201-5.0)
ALTERNATE	(1281-4.4)		(1701-6.0)	(1701-7.0)

* 1. NO CIRCLING NORTH OF RWY 12 / 30 BEYOND 3NM.
2. CTA CONTAINMENT NOT ASSURED WHEN HOLDING AT OR BLW 6500ft.

Changes: LNAV MINIMA.

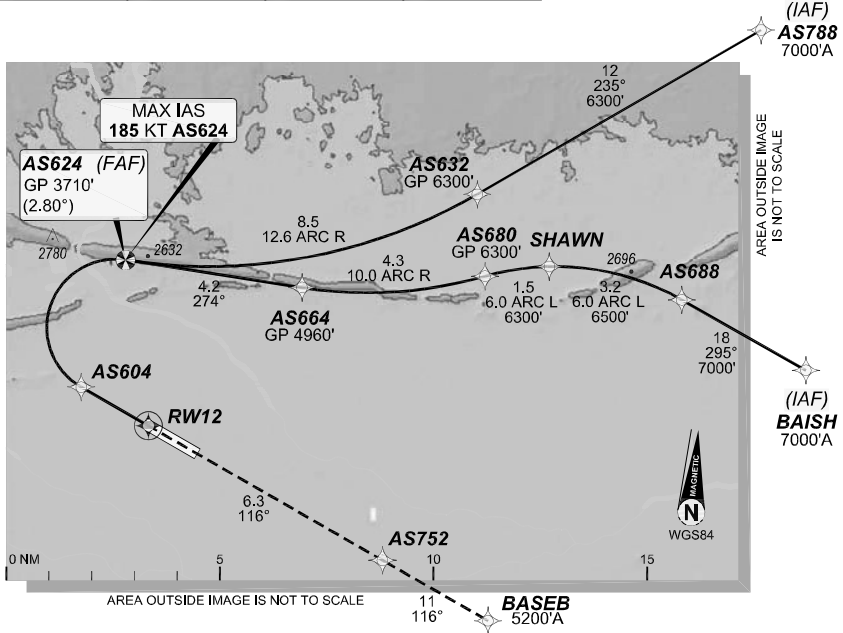
BASGN02-185

1 DEC 2022

ALICE SPRINGS, NT (YBAS)

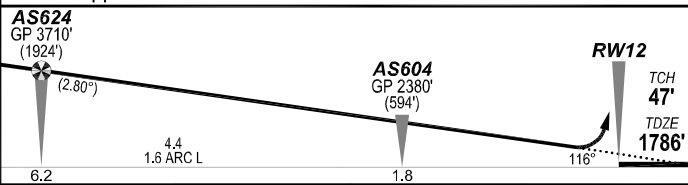
GE PROPRIETARY INFORMATION

ATIS	AWIS	TWR	FIA (AH)	CTAF + AFRU (AH)
123.0 115.9 335	134.05	118.3	ML CEN 119.8	118.3
RNP AR	Apt Elev. 1789' TDZE 1786'	AS624 (FAF) GP 3710' (2.80°)	Trans Level	
RNV M 12		GP 3710' (2.80°)	FL110	



MISSED APPROACH:

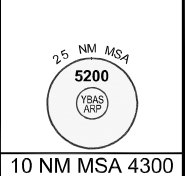
Climb to 5200' via the RNP AR
Missed Approach track to BASEB.



NOTES:

- YBAS ACT QNH RQ.
- Minimum MAP gradient (All Engines) 3.0% to 5200FT.
- APCH Path does not coincide with PAPI glide path 3°.

			RNP 0.30
			DA(H) 2104' (318')
			HIALS OUT
C	C	C	C 800 m 1700 m



FOR CASA APPROVED OPERATORS ONLY

Changes: PROC NAME, SPEED NOTE AS624, RNAV (RNP) TO RNP AR.

BASGN03-173

DO NOT USE FOR NAVIGATION

Prepared by GE Aviation



202208021123COPYRIGHT 2022 NAVERUS, INC. USA

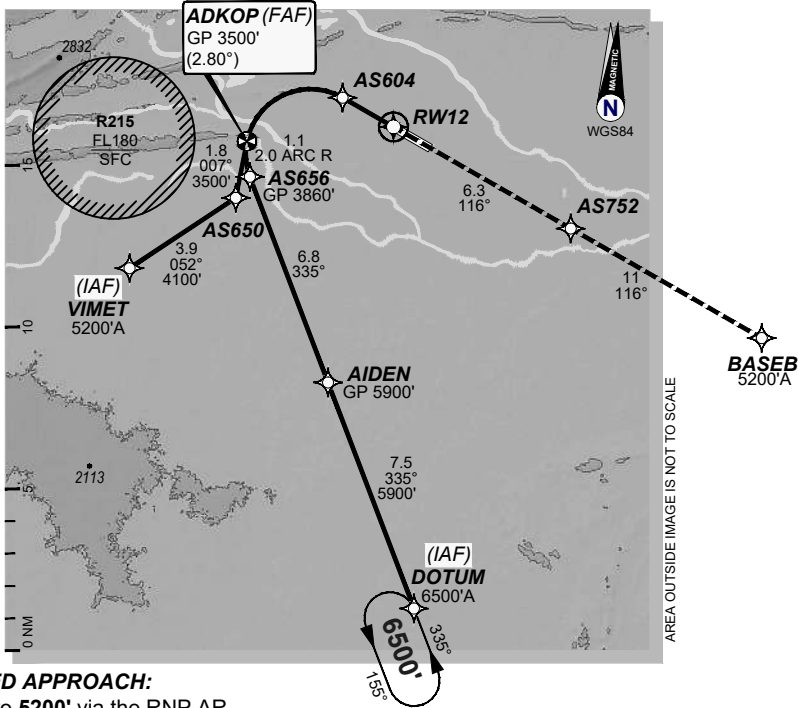
USE QNH

RNP P RWY 12 (AR)

21 MAR 2024

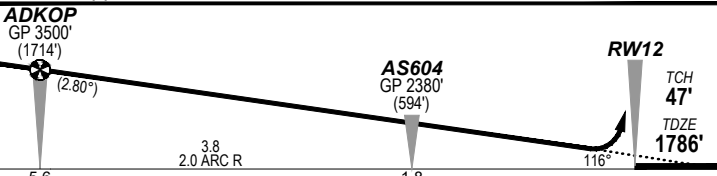
ALICE SPRINGS, NT (YBAS)

ATIS	AWIS	TWR	FIA (AH)	CTAF + AFRR (AH)
123.0 115.9 335	134.05	118.3	ML CEN 119.8	118.3
RNP AR RNP P 12	Apt Elev. 1789' TDZE 1786'	ADKOP (FAF) GP 3500' (2.80°)	Trans Level FL110	



MISSED APPROACH:

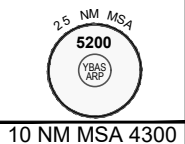
Climb to **5200'** via the RNP AR
Missed Approach track to **BASEB**.



NOTES:

- YBAS ACT QNH RQ.
- Minimum MAP gradient (All Engines) 3.0% to 5200FT.
- APCH Path does not coincide with PAPI glide path 3°.

ADKOP GP 3500' (1714') (2.80°)		AS604 GP 2380' (594')		RWY12 TCH 47' TDZE 1786'	
5.6		1.8		116°	
2.0 ARC R		3.8			
RNP 0.30			DA(H) 2104' (318')		
C			HIALS OUT		
C			C		
800 m			1700 m		



FOR CASA APPROVED OPERATORS ONLY

202310241957COPYRIGHT 2023 GE Digital USA, GE PROPRIETARY INFORMATION

Changes: from SUP H81/23

DO NOT USE FOR NAVIGATION

BASGN04-178

© Airservices Australia

Prepared by GE Aviation



USE QNH

RNP U RWY 12 (AR)

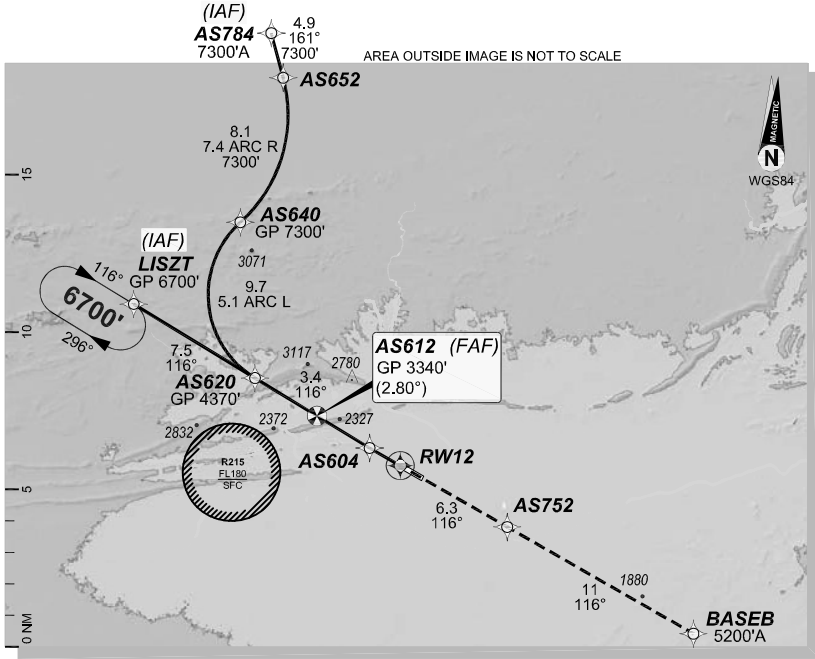
1 DEC 2022

ALICE SPRINGS, NT (YBAS)

GE PROPRIETARY INFORMATION

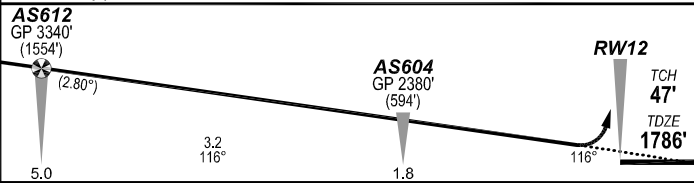
ATIS	AWIS	TWR	FIA (AH)	CTAF + AFRU (AH)
123.0 115.9 335	134.05	118.3	ML CEN 119.8	118.3

RNP AR	Apt Elev. 1789'	AS612 (FAF)	Trans Level
RNV U 12	TDZE 1786'	GP 3340' (2.80°)	FL110



MISSED APPROACH:

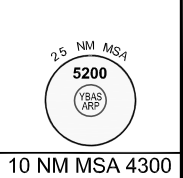
Climb to **5200'** via the RNP AR
Missed Approach track to **BASEB**.



NOTES:

- YBAS ACT QNH RQ.
- Minimum MAP gradient (All Engines) 3.0% to 5200FT.
- APCH Path does not coincide with PAPI glide path 3°.

		RNP 0.30	
		DA(H) 2104' (318')	
		HIALS OUT	
C	C	C	C
		800 m	1700 m



202208021125COP/YRIGHT 2022 NAVERUS/INC. USA

FOR CASA APPROVED OPERATORS ONLY

Changes: PROC NAME, RNAV (RNP) TO RNP AR.

BASGN05-173

DO NOT USE FOR NAVIGATION

Prepared by GE Aviation



USE QNH

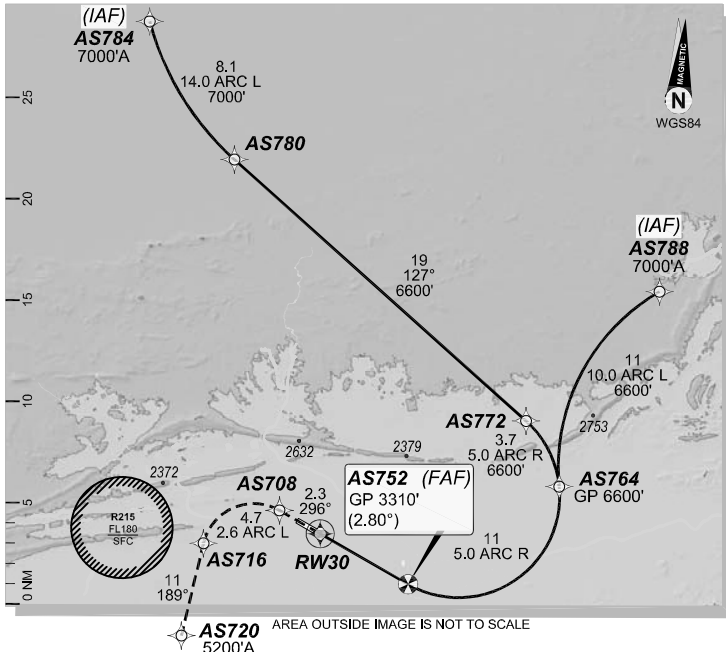
RNP M RWY 30 (AR)

1 DEC 2022

ALICE SPRINGS, NT (YBAS)

GE PROPRIETARY INFORMATION

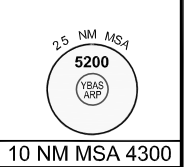
ATIS 123.0 115.9 335		AWIS 134.05	TWR 118.3	FIA (AH) ML CEN 119.8	CTAF + AFRU (AH) 118.3
RNP AR RNV M 30	Apt Elev. 1789' TDZE 1764'	AS752 (FAF) GP 3310' (2.80°)	Trans Level FL110		



MISSED APPROACH:
Climb to 5200' via the RNP AR
Missed Approach track to AS720.

RWY 30		AS752 GP 3310' (1546')
TCH 50'		
TDZE 1764'		
		(2.80°)
		5.0
		RNP 0.30
		DA(H) 2067' (303')
C	C	C
		1600 m

NOTES:
- YBAS ACT QNH RQ.
- Minimum MAP gradient (All Engines) 3.0% to 5200FT.
- APCH Path does not coincide with PAPI glide path 3°.



202208021125COPYRIGHT 2022 NAVERUS, INC. USA

FOR CASA APPROVED OPERATORS ONLY

Changes: PROC NAME, RNAV (RNP) TO RNP AR.

DO NOT USE FOR NAVIGATION

Prepared by GE Aviation

BASGN06-173



USE QNH

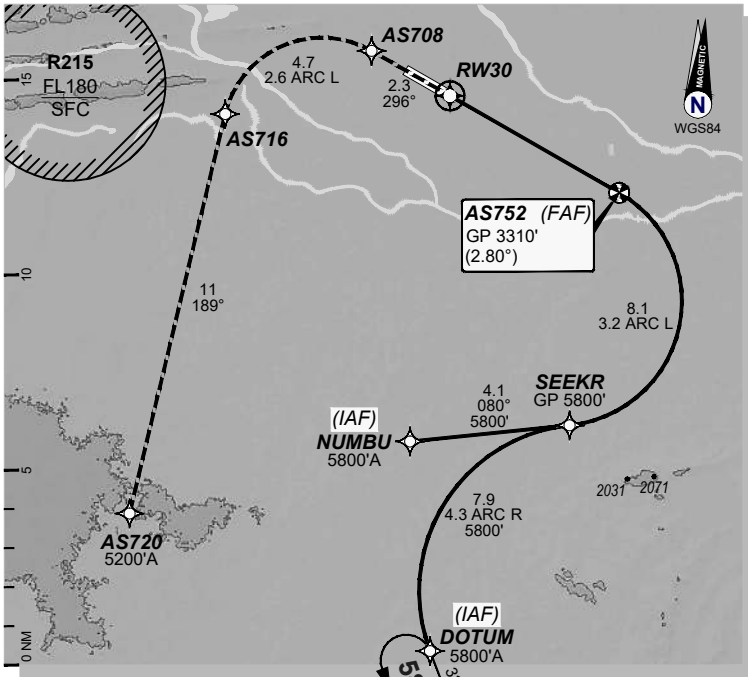
RNP P RWY 30 (AR)

21 MAR 2024

ALICE SPRINGS, NT (YBAS)

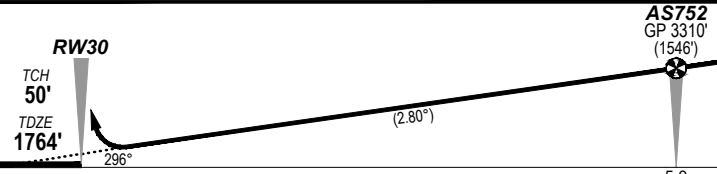
ATIS	AWIS	TWR	FIA (AH)	CTAF + AFRU (AH)
123.0 115.9 335	134.05	118.3	ML CEN 119.8	118.3

RNP AR RNP P 30	Apt Elev. 1789' TDZE 1764'	AS752 (FAF) GP 3310' (2.80°)	Trans Level FL110
--------------------	---	---------------------------------	----------------------



MISSED APPROACH:

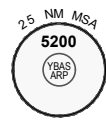
Climb to **5200'** via the RNP AR
Missed Approach track to **AS720**.



NOTES:

- YBAS ACT QNH RQ.
- Minimum MAP gradient (All Engines) 3.0% to 5200FT.
- APCH Path does not coincide with PAPI glide path 3°.

			RNP 0.30
			DA(H) 2067' (303')
C	C	C	1600 m



FOR CASA APPROVED OPERATORS ONLY

202310241959COPYRIGHT 2023 GE Digital USA, GE PROPRIETARY INFORMATION

Changes: from SUP H81/23

DO NOT USE FOR NAVIGATION

BASGN07-178

© Airservices Australia

Prepared by GE Aviation



USE QNH

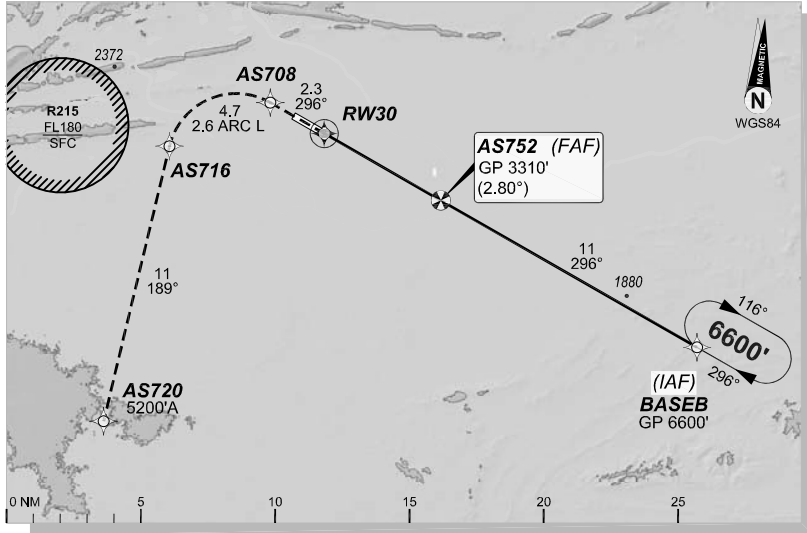
RNP U RWY 30 (AR)

1 DEC 2022

ALICE SPRINGS, NT (YBAS)

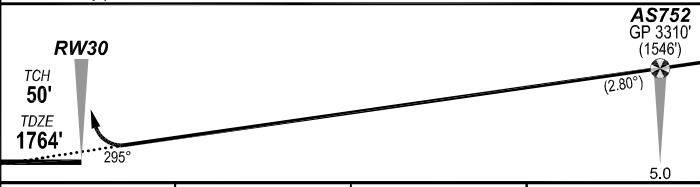
GE PROPRIETARY INFORMATION

ATIS 123.0 115.9 335	AWIS 134.05	TWR 118.3	FIA (AH) ML CEN 119.8	CTAF + AFRU (AH) 118.3
RNP AR RNV U 30	Apt Elev. 1789' TDZE 1764'	AS752 (FAF) GP 3310' (2.80°)	Trans Level FL110	



MISSED APPROACH:

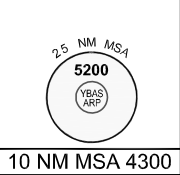
Climb to **5200'** via the RNP AR
Missed Approach track to **AS720**.



NOTES:

- YBAS ACT QNH RQ.
- Minimum MAP gradient (All Engines) 3.0% to 5200FT.
- APCH Path does not coincide with PAPI glide path 3°.

			RNP 0.30
			DA(H) 2067' (303')
C	C	C	1600 m



202208021126COP/YR/GHT 2022 NAVERUS, INC. USA

FOR CASA APPROVED OPERATORS ONLY

Changes: PROC NAME, RNAV (RNP) TO RNP AR.

BASGN08-173

DO NOT USE FOR NAVIGATION

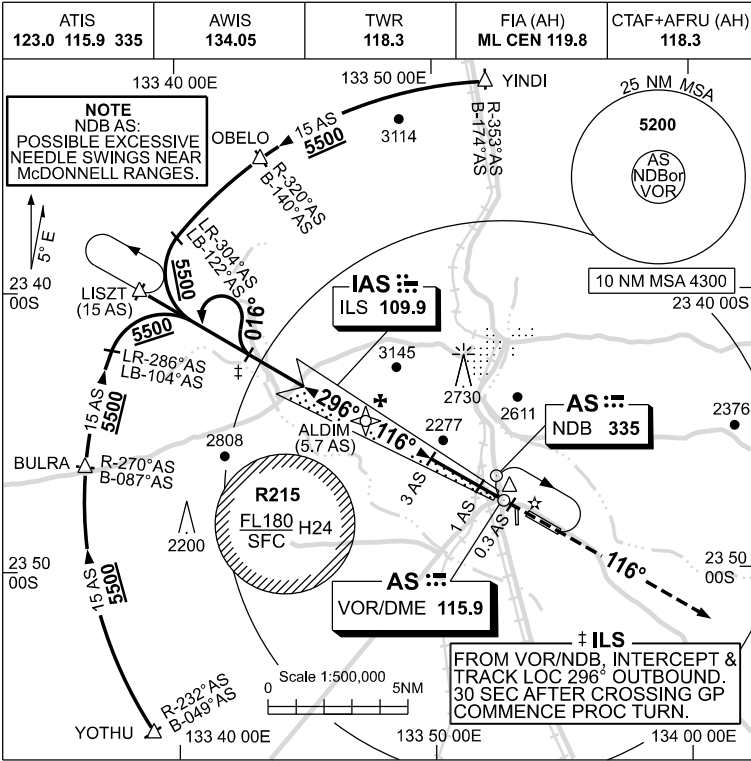
Prepared by GE Aviation



USE QNH

ILS-Y or LOC-Y RWY 12
ALICE SPRINGS, NT (YBAS)

27 NOV 2025



NAVAID RQ:
 • DME or GNSS

Holding at AS VOR or NDB

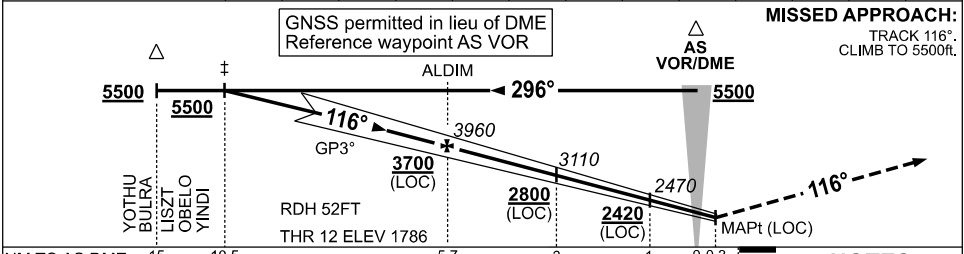
TR	IN	TURN	TIME	MIN ALT	DME LMT
296°	Right	1	5500		

Holding at LISZT

TR	IN	TURN	TIME	MIN ALT	DME LMT
116°	Left	1	5500		

AD ELEV 1789
 Bearings are Magnetic
 Elevations in FEET AMSL

NM TO AS DME	10.5	10	9	8	7	6	5.7	5	4	3	2	1	0.5
ALT (3° APCH PATH)	5500	5330	5010	4690	4370	4060	3960	3740	3420	3110	2780	2470	2320



NM TO AS DME	15	10.5	5.7	3	1	0.3
NM TO THR 12	11.5	6.7	4	2	1.0	0

CATEGORY	A	B	C	D/D _L
S-I ILS		2100 (314) 0.8		
S-I LOC		2320 (531-2.1)		
CIRCLING *	2570 (781-2.4)	2990 (1201-4.0)	2990 (1201-5.0)	
ALTERNATE ‡	(1281-4.4)	(1701-6.0)	(1701-7.0)	

- NOTES**
- MAX IAS:
 HOLDING : 185KT.
 HLDG NOT ABOVE
 FL120.
 - SPECIAL ALTN MNM
 800/4.0KM.
 - NO CIRCLING N
 OF RWY 12 / 30
 BEYOND 3NM.
 - CTA CONTAINMENT
 NOT ASSURED WHEN
 HOLDING AT LISZT
 AT OR BLW 6500ft.

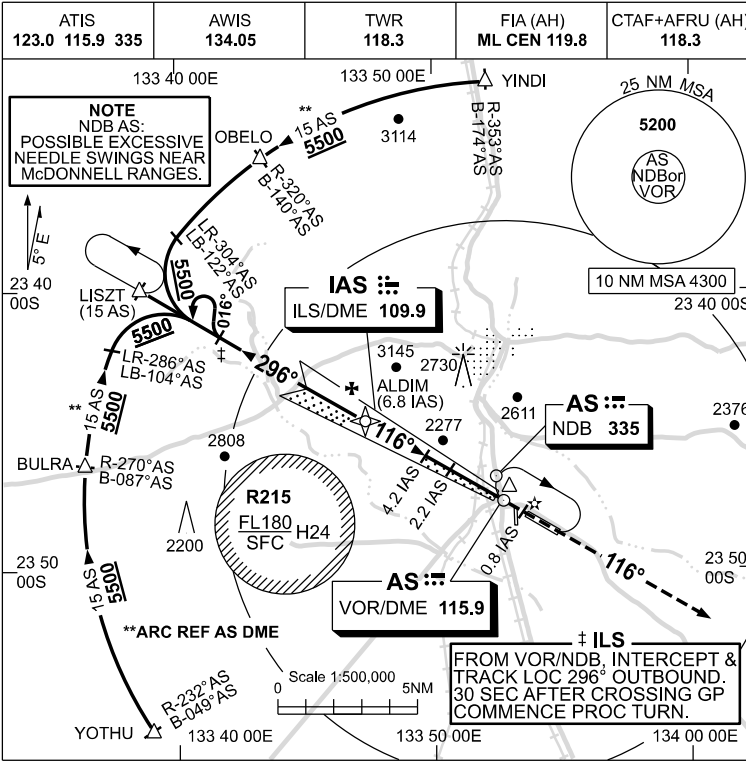
Changes: 10.5AS-ALDIM MNM ALT

BASII01-185

USE QNH

ILS-Z or LOC-Z RWY 12
ALICE SPRINGS, NT (YBAS)

27 NOV 2025



NAVAID RQ:
 • DME or GNSS (ILS)
 • DME (LOC ONLY)

Holding at AS VOR or NDB

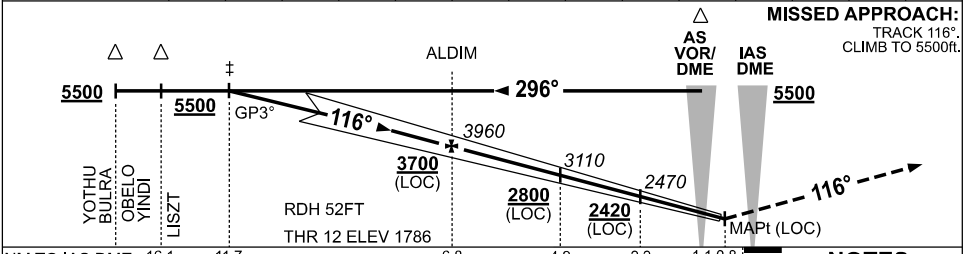
TR IN	TURN	TIME	MIN ALT	DME LMT
296°	Right	1	5500	

Holding at LISZT

TR IN	TURN	TIME	MIN ALT	DME LMT
116°	Left	1	5500	

AD ELEV 1789
 Bearings are Magnetic
 Elevations in FEET AMSL

NM TO IAS DME	11.7	11	10	9	8	6.8	6	5	4.2	4	3	2.2	2	1.7
ALT (3° APCH PATH)	5500	5290	4970	4650	4330	3960	3690	3380	3110	3060	2740	2470	2420	2320



NM TO IAS DME	16.1	11.7			6.8		4.2	2.2	1.1	0.8				
NM TO THR 12	16	11.5			6.7		4	2	1	0.6				

MISSED APPROACH:
 TRACK 116°.
 CLIMB TO 5500ft.

- NOTES**
- MAX IAS: HOLDING: 185KT. HLDG NOT ABOVE FL120.
 - SPECIAL ATLN MNM 800/4.0KM.
 - NO CIRCLING N OF RWY 12 / 30 BEYOND 3NM.
 - CTA CONTAINMENT NOT ASSURED WHEN HOLDING AT LISZT AT OR BLW 6500ft.

CATEGORY	A	B	C	D/D _L
S-I ILS		2100 (314) 0.8		
S-I LOC		2320 (531-2.1)		
CIRCLING *	2570 (781-2.4)		2990 (1201-4.0)	2990 (1201-5.0)
ALTERNATE ‡	(1281-4.4)		(1701-6.0)	(1701-7.0)

Changes: 11.7IAS-ALDIM MNM ALT.

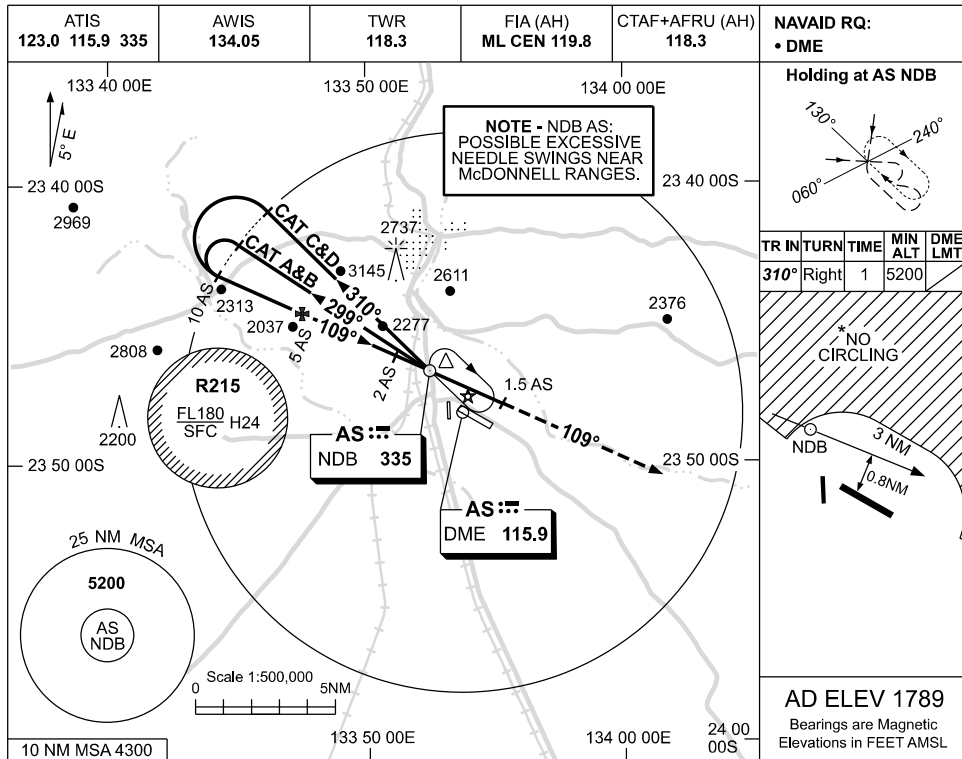
BASII02-185

USE QNH

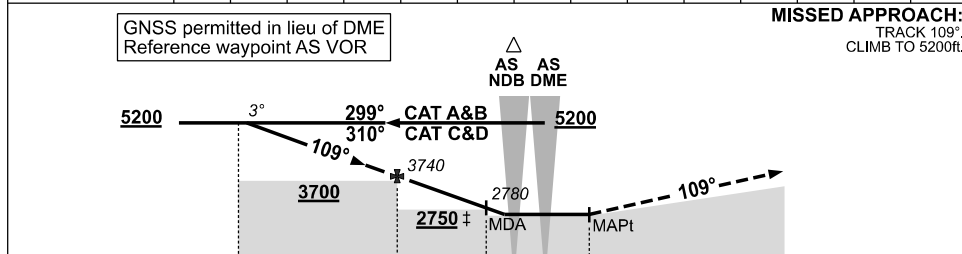
NDB-B

27 NOV 2025

ALICE SPRINGS, NT (YBAS)



DME DIST	9.6	9	8	7	6	5	4	3	2	1.3			
ALT (3° APCH PATH)	5200	5010	4700	4380	4060	3740	3420	3100	2780	2570			



CATEGORY	A	B	C	D
CIRCLING *	2570 (781-2.4)		2990 (1201-4.0)	2990 (1201-5.0)
ALTERNATE	(1281-4.4)		(1701-6.0)	(1701-7.0)

NOTES

- MAX IAS:
 INITIAL : 210KT.
 HOLDING : 210KT.
 HLDG NOT ABOVE FL120.
- CAT C&D ACFT DO NOT DESCEND BLW CIRCLING MINIMA.
- NO CIRCLING N OF RWY 12 / 30 BEYOND 3NM.

Changes: OUTBOUND TRACK, INTERMEDIATE SEGMENT MNM ALT, Editorial.

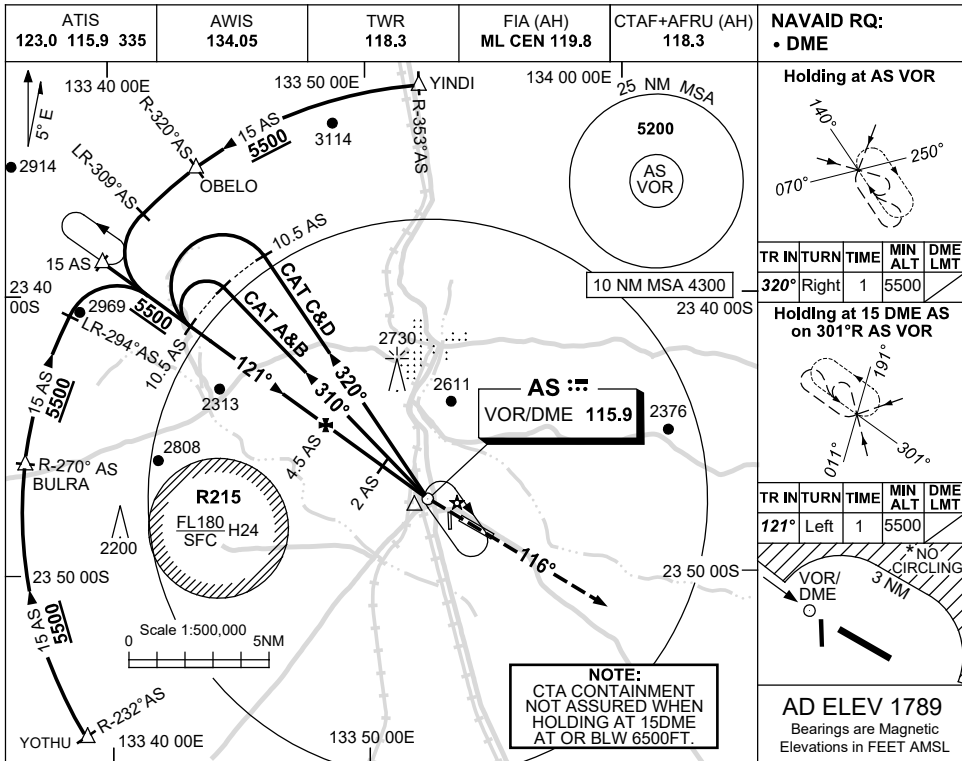
BASNB02-185

USE QNH

VOR RWY 12

28 NOV 2024

ALICE SPRINGS, NT (YBAS)



Holding at AS VOR

TR	IN	TURN	TIME	MIN ALT	DME LMT
320°	Right	1	5500		

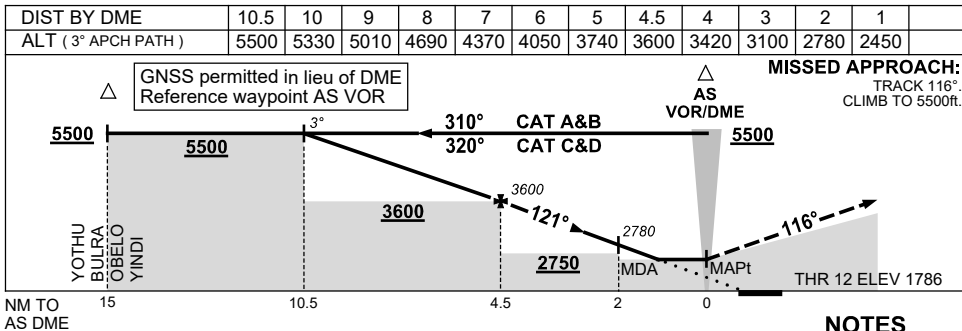
Holding at 15 DME AS on 301°R AS VOR

TR	IN	TURN	TIME	MIN ALT	DME LMT
121°	Left	1			

NO CIRCLING

VOR/DME 3 NM

AD ELEV 1789
Bearings are Magnetic
Elevations in FEET AMSL



NOTES

1. MAX IAS:
INITIAL : 210KT.
HOLDING : 185KT.
HLDG NOT ABOVE FL120.
- * 2. SPECIAL ALTN MNM 800/4.0KM.
- * 3. NO CIRCLING N OF RWY 12 / 30 BEYOND 3NM.

CATEGORY	A	B	C	D
S-I VOR/DME	2450 (661-2.9)			
CIRCLING *	2570 (781-2.4)		2990(1201-4.0) 2990(1201-5.0)	
ALTERNATE‡	(1281-4.4)		(1701-6.0) (1701-7.0)	

Changes: FROM SUP H107/24.

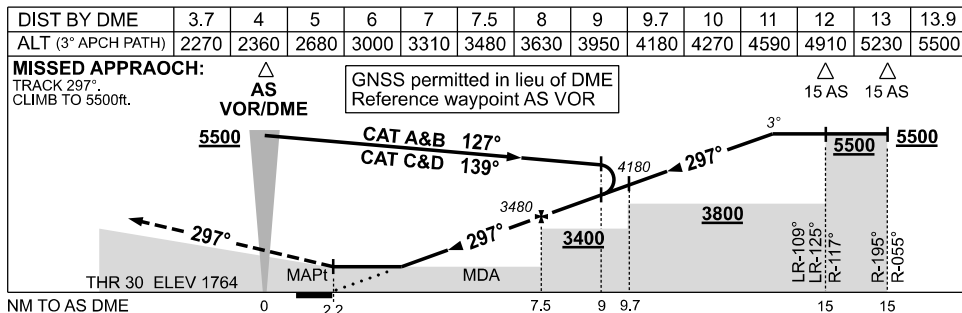
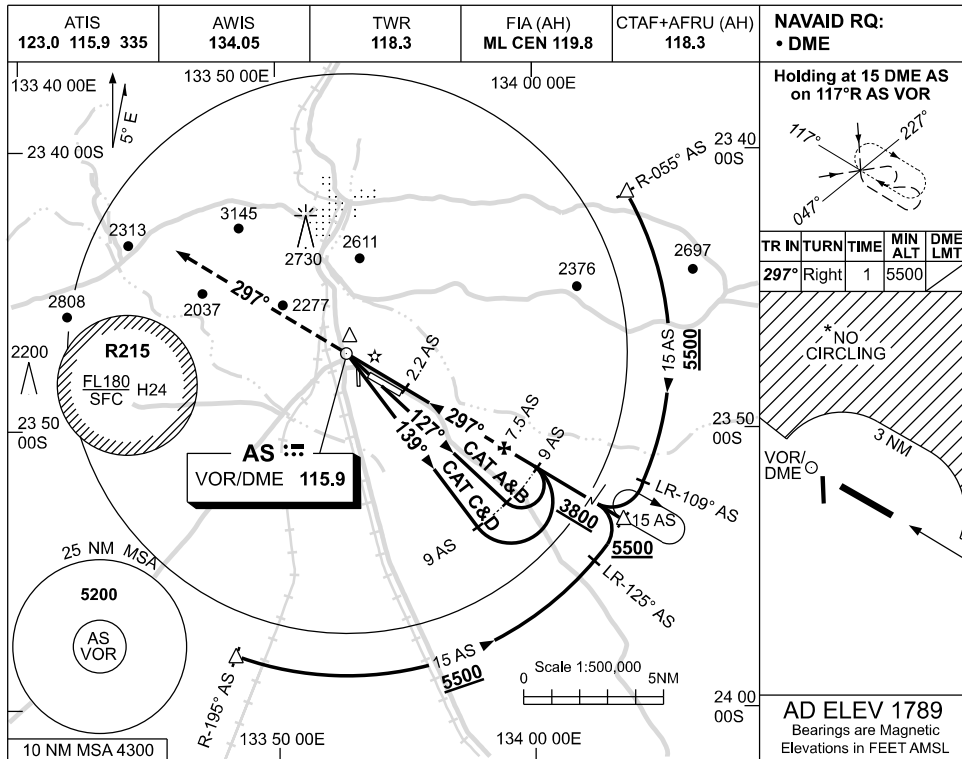
BASV001-181

USE QNH

VOR RWY 30

27 NOV 2025

ALICE SPRINGS, NT (YBAS)



NOTES

1. MAX IAS:
INITIAL : 210KT.
- * 2. SPECIAL ALTN MNM
800/4.0KM.
- * 3. NO CIRCLING N
OF RWY 12 / 30
BEYOND 3NM.
4. CTA CONTAINMENT
NOT ASSURED WHEN
HOLDING AT OR BLW
6500ft.

CATEGORY	A	B	C	D
S-I VOR/DME	2270 (506-2.9)			
CIRCLING*	2570 (781-2.4)	2990 (1201-4.0)	2990 (1201-5.0)	
ALTERNATE*	(1281-4.4)	(1701-6.0)	(1701-7.0)	

Changes: S-I VOR/DME MINIMA.

BASVO02-185