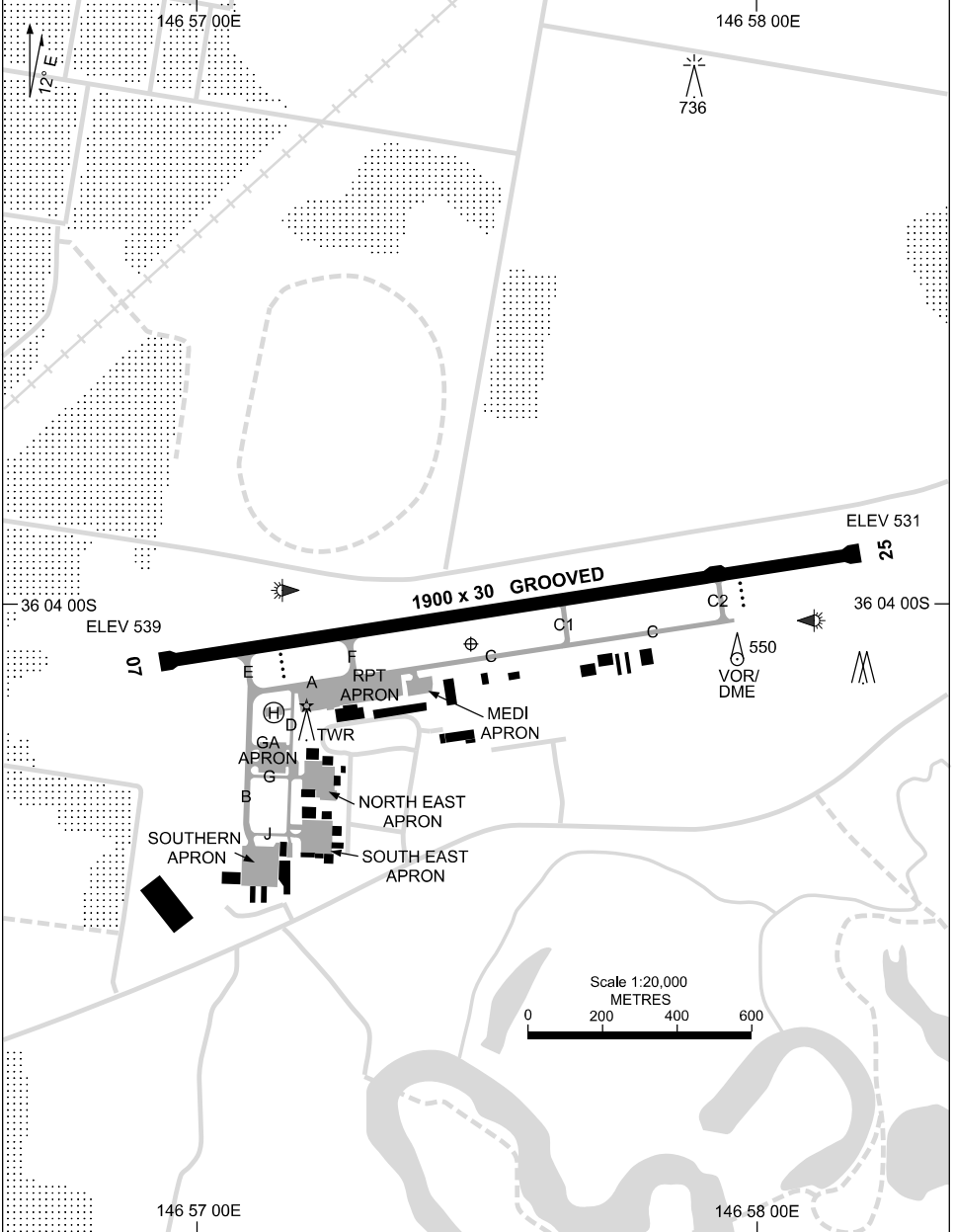


19 MAR 2026

AWIS 134.525	ATIS 115.6 133.85	TWR 123.25	SMC 121.8	CTAF+AFRU (AH) 123.25	FIA (AH) ML CEN 125.2	AFRU+PAL (AH) 123.25	Bearings are Magnetic Elevations in FEET AMSL
-----------------	----------------------	---------------	--------------	--------------------------	--------------------------	-------------------------	--



Changes: FROM SUP H153/25.

MAYAD01-186

27 NOV 2025

AD ELEV 539
36 04 04S 146 57 29E

AERODROME CHART - Page 2
ALBURY, NSW (YMAY)

AWIS 134.525	ATIS 115.6 133.85	TWR 123.25	SMC 121.8	CTAF+AFRU (AH) 123.25	FIA (AH) ML CEN 125.2	AFRU+PAL (AH) 123.25	Bearings are Magnetic Elevations in FEET AMSL
-----------------	----------------------	---------------	--------------	--------------------------	--------------------------	-------------------------	--

--	--	--	--	--	--	--	--

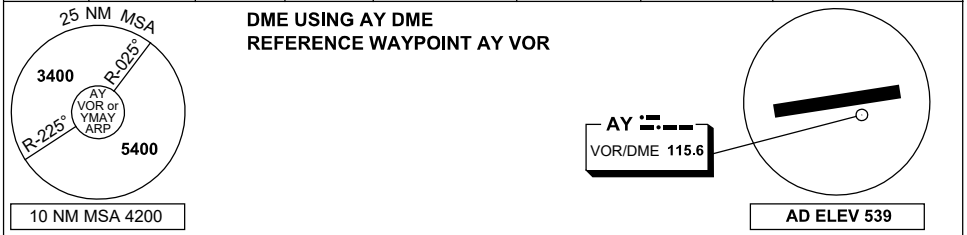
RWY	AERODROME LIGHTING						
		ABN : OCC W 6 SEC TAXIWAYS : BLUE EDGE ON TWY A, B, C, E, F AND J. BLUE REFLECTIVE EDGE ON TWY D. RL : AFRU+PAL 123.25, SDBY (4 SEC DURING LVP, UP TO 15 SEC OT) PTBL IN EMERG					
07 ⁰⁶⁹	PAPI RIGHT SIDE 3.0° 51.6FT MIRL RTIL						
249 25	PAPI LEFT SIDE 3.0° 51.4FT MIRL RTIL						

<p>NOTES</p> <ol style="list-style-type: none"> 1. PAPI RWY 25 NOT TO BE USED BEYOND 3NM FROM AD WHEN R368 ACT SFC-2200. 2. AWIS REQUIRES ONE ONE-SECOND PULSE TO ACTIVATE. 							
--	--	--	--	--	--	--	--

DME or GNSS ARRIVAL PROCEDURES ALBURY, NSW (YMAY) Page 2

30 NOV 2023

AWIS 134.525	ATIS 115.6 133.85	TWR 123.25	SMC 121.8	CTAF+AFRU (AH) 123.25	FIA (AH) ML CEN 125.2	AFRU+PAL (AH) 123.25	Bearings are Magnetic Elevations in FEET AMSL
-----------------	----------------------	---------------	--------------	--------------------------	--------------------------	-------------------------	--

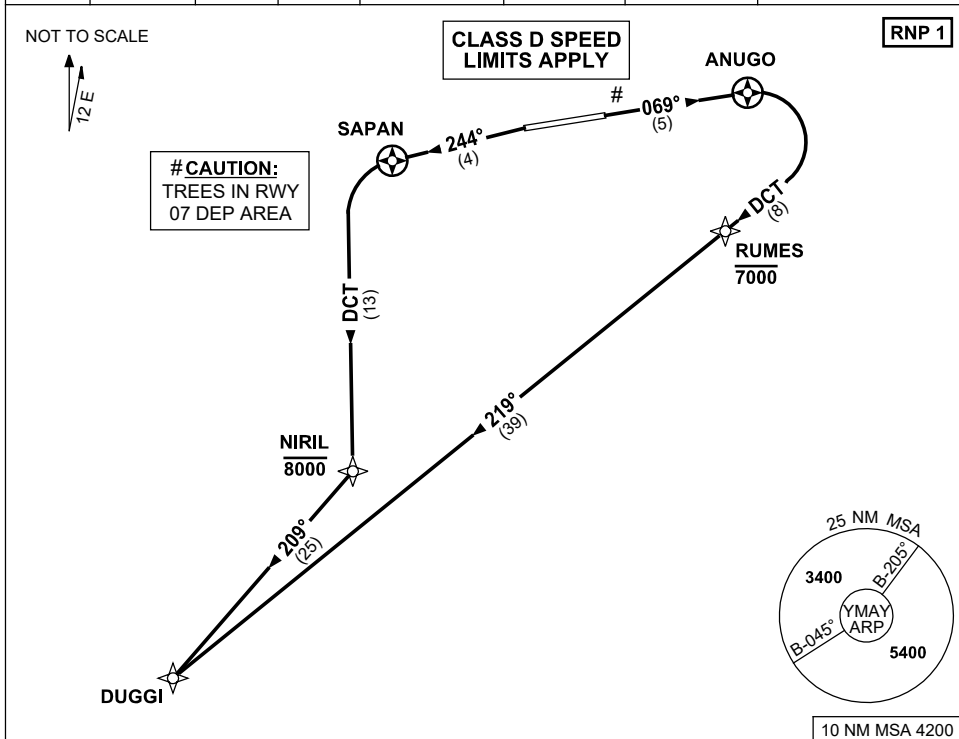


<p>SECTOR D</p> <p>180° AY VOR 063°</p>	<p>VOR 3400 3260 3° 2500 2300 MDA MAPt 239° 3400</p>	<p>MISSED APPROACH:</p> <p>TURN AS APPROPRIATE, TRACK 239°. CLIMB TO 3400FT.</p> <p>NOTE: PROC NOT AVBL WHEN R368 ACT UNLESS ADVISED BY ATC.</p>
NM TO AY VOR/DME	25 15 8 5 2 0	
CIRCLING MINIMA	A,B: 2130-2.4 C: 2220-4.0 D: 2270-5.0	
NM TO AY VOR/DME	5.5 5 4 3 2 1.9 1.7 1.5	
ALT (3° APCH PATH)	3400 3260 2940 2620 2300 2270 2220 2130	

**STANDARD INSTRUMENT DEPARTURES (SID)
DUGGI ONE DEPARTURE (RNAV)
ALBURY, NSW (YMAY)**

30 NOV 2023

AWIS 134.525	ATIS 115.6 133.85	TWR 123.25	SMC 121.8	CTAF+AFRU (AH) 123.25	FIA (AH) ML CEN 125.2	AFRU+PAL (AH) 123.25	Bearings are Magnetic Elevations in FEET AMSL
-----------------	----------------------	---------------	--------------	--------------------------	--------------------------	-------------------------	--



DUGGI ONE DEPARTURE

RWY 07

- GRAD 5.6% TO 2600ft THEN 3.3%
- Track 069° to ANUGO
- Turn RIGHT, track DCT to RUMES
Cross RUMES AT or BLW 7000ft
- Track 219° to DUGGI

NOTE: PROC NOT AVBL WHEN R368 ACT UNLESS ADVISED BY ATC.

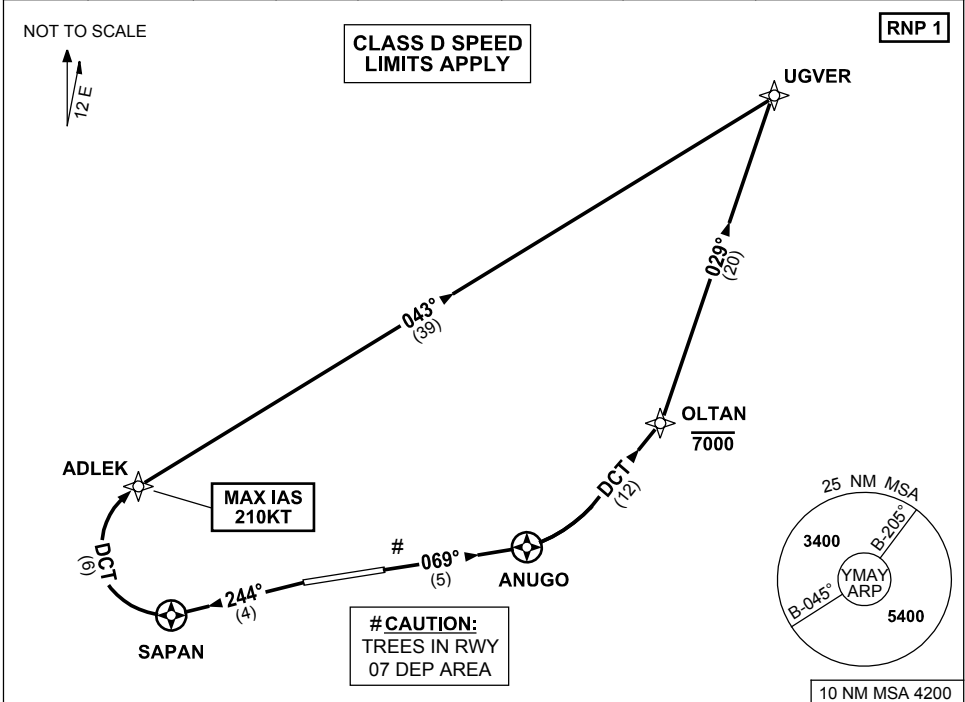
RWY 25

- GRAD 4.8% TO 1400ft THEN 3.3% (5.0% TO 2500ft)
- NOT BEFORE DER turn LEFT, track 244° to SAPAN
- Turn LEFT, track DCT to NIRIL
Cross NIRIL AT or BLW 8000ft
- Turn RIGHT, track 209° to DUGGI

STANDARD INSTRUMENT DEPARTURES (SID)
UGVER ONE DEPARTURE (RNAV)
ALBURY, NSW (YMAY)

30 NOV 2023

AWIS 134.525	ATIS 115.6 133.85	TWR 123.25	SMC 121.8	CTAF+AFRU (AH) 123.25	FIA (AH) ML CEN 125.2	AFRU+PAL (AH) 123.25	Bearings are Magnetic Elevations in FEET AMSL
-----------------	----------------------	---------------	--------------	--------------------------	--------------------------	-------------------------	--



UGVER ONE DEPARTURE

RWY 07

- GRAD 4.8% TO 1700ft THEN 3.3%
- Track 069° to ANUGO
- Turn LEFT, track DCT to OLTAN
 Cross OLTAN AT or BLW 7000ft
- Track 029° to UGVER

RWY 25

- GRAD 4.8% TO 1900ft THEN 3.3% (5.0% TO 2500ft)
- NOT BEFORE DER turn LEFT, track 244° to SAPAN
- Turn RIGHT, track DCT to ADLEK
 MAX IAS 210KT to ADLEK
- Track 043° to UGVER

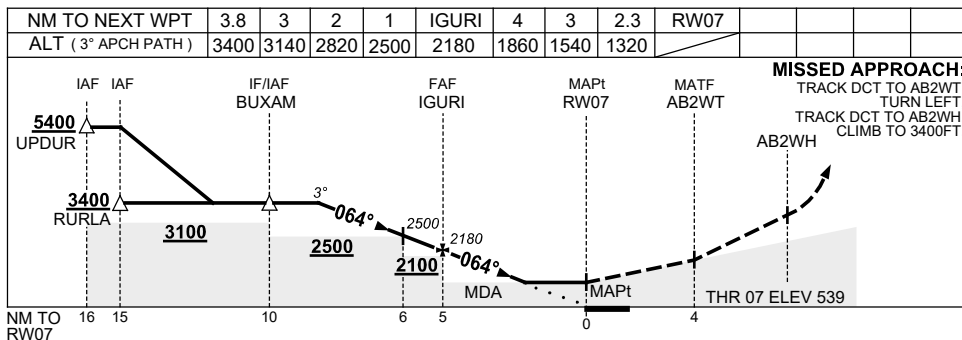
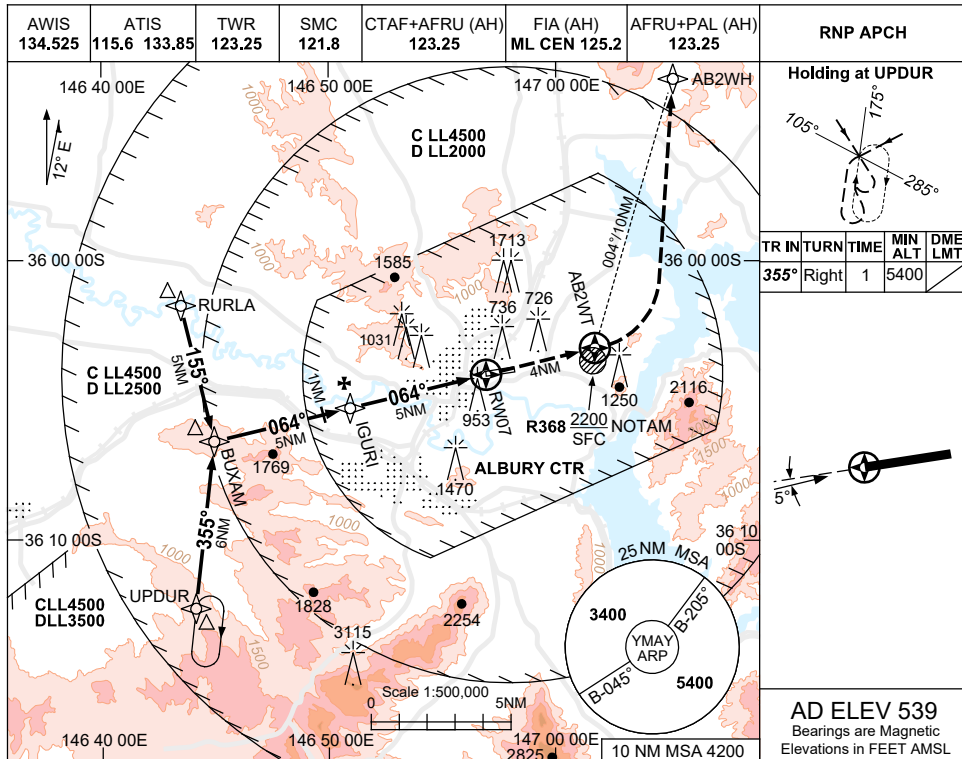
NOTE: PROC NOT AVBL WHEN R368 ACT UNLESS ADVISED BY ATC.

USE QNH

RNP Z RWY 07

ALBURY, NSW (YMAJ)

30 NOV 2023



NOTES

CATEGORY	A	B	C	D
LNAV		1320 (781-4.5)		
CIRCLING	2050 (1511-2.4)		2220 (1681-4.0)	2270 (1731-5.0)
ALTERNATE	(2011-4.4)		(2181-6.0)	(2231-7.0)

1. MAX IAS: INITIAL : 210KT.
2. **COLOUR:** SEE SPEC NOTICES.
3. PROC NOT AVBL WHEN R368 ACT UNLESS ADVISED BY ATC.

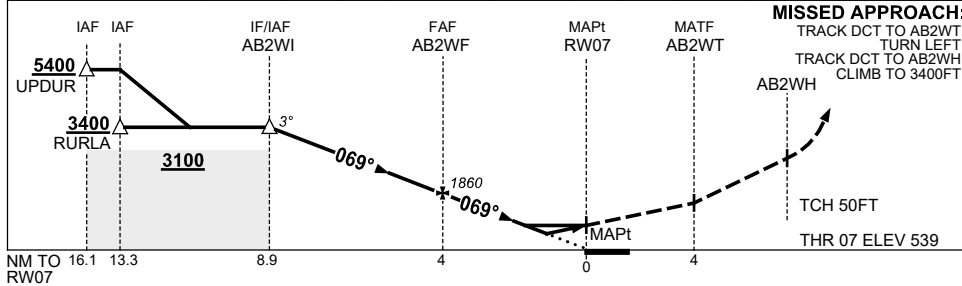
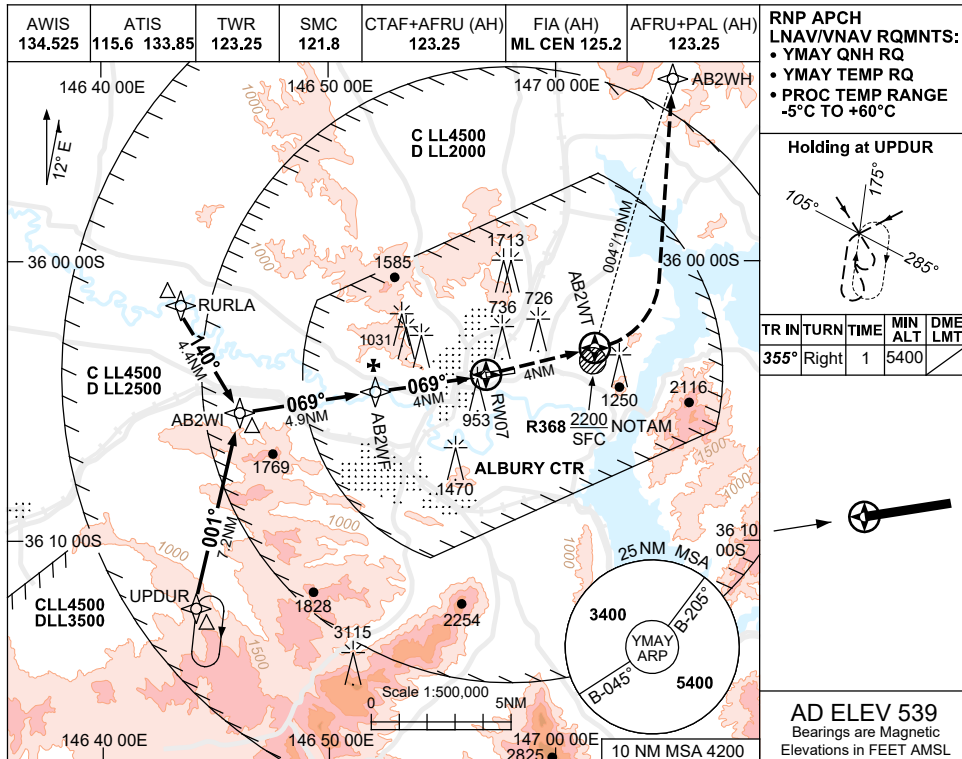
Changes: LNAV MINIMA, CIRCLING & ALTERNATE CAT C MINIMA, DIST-ALT TABLE, NEW LOGO.

MAYGN02-177

USE QNH RNP Y RWY 07 (LNAV/VNAV ONLY)

ALBURY, NSW (YMAY)

30 NOV 2023



1. MAX IAS: INITIAL : 210KT.
2. COLOUR: SEE SPEC NOTICES.
3. CIRCLING NOT AVBL WHEN R368 ACT.

CATEGORY	A	B	C	D
LNAV/VNAV	1220 (681-3.9)			
CIRCLING	2050 (1511-2.4)	2220 (1681-4.0)	2270 (1731-5.0)	
ALTERNATE	(2011-4.4)	(2181-6.0)	(2231-7.0)	

Changes: CIRCLING & ALTERNATE CAT C MINIMA, NEW LOGO.

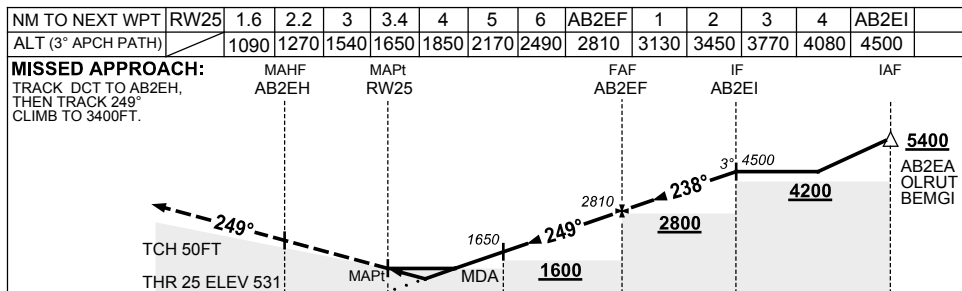
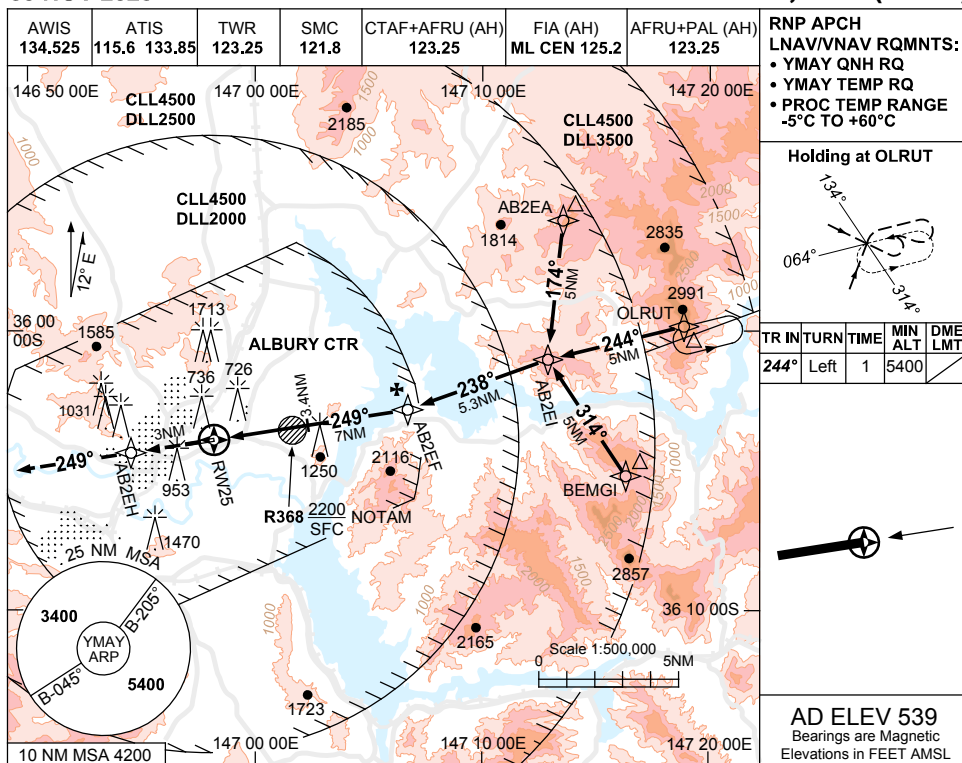
MAYGN03-177

USE QNH

RNP RWY 25

ALBURY, NSW (YMAY)

30 NOV 2023



NOTES

- MAX IAS: INITIAL : 210KT.
- COLOUR: SEE SPEC NOTICES.
- HLDG NOT CONTAINED IN CTA.
- PROC NOT AVBL WHEN R368 ACT UNLESS ADVISED BY ATC.

CATEGORY	A	B	C	D
LNAV/VNAV		1090 (559-3.2)		
LNAV		1270 (739-4.2)		
CIRCLING	2050 (1511-2.4)		2220 (1681-4.0)	2270 (1731-5.0)
ALTERNATE	(2011-4.4)		(2181-6.0)	(2231-7.0)

Changes: CIRCLING & ALTERNATE CAT C MINIMA, Editorial.

MAYGN04-177

**STANDARD INSTRUMENT ARRIVAL (STAR)
VEGRU ONE ARRIVAL (RNAV)
ALBURY, NSW (YMA)**

23 MAR 2023

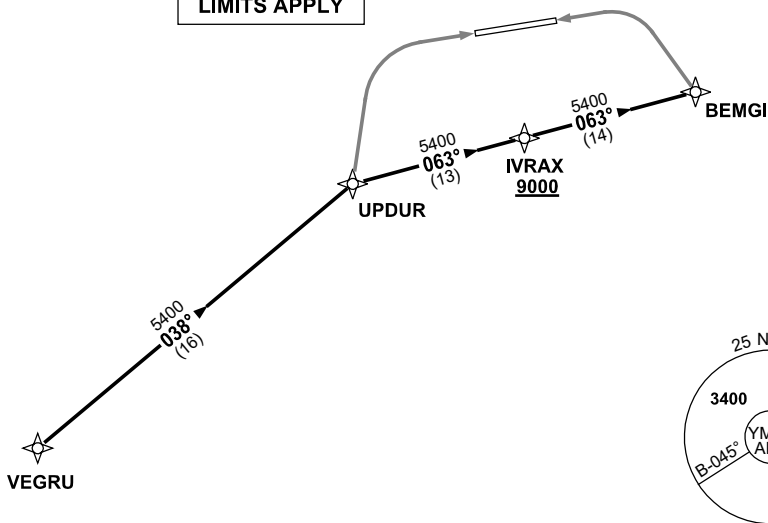
AWIS 134.525	ATIS 115.6 133.85	TWR 123.25	SMC 121.8	CTAF+AFRU (AH) 123.25	FIA (AH) ML CEN 125.2	AFRU+PAL (AH) 123.25	Bearings are Magnetic Elevations in FEET AMSL
-----------------	----------------------	---------------	--------------	--------------------------	--------------------------	-------------------------	--

NOT TO SCALE



**CLASS D SPEED
LIMITS APPLY**

RNP 1



10 NM MSA 4200

ARRIVAL: VEGRU ONE

- From VEGRU track 038° to UPDUR

RWY 07:

- Track via RNP Z RWY 07 or RNP Y RWY 07 (LNAV/VNAV ONLY)

NOTE: PROC NOT AVBL WHEN R368 ACT UNLESS ADVISED BY ATC.

RWY 25:

- Track 063° to IVRAX
 Cross IVRAX AT or ABV 9000ft
- Track 063° to BEMGI
- Track via RNP RWY 25

**STANDARD INSTRUMENT ARRIVAL (STAR)
ARRAN ONE ARRIVAL (RNAV)
ALBURY, NSW (YMAY)**

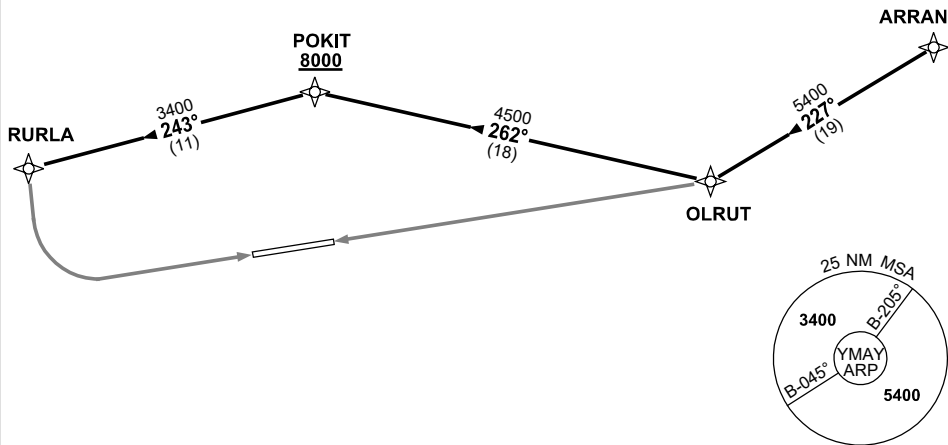
23 MAR 2023

AWIS 134.525	ATIS 115.6 133.85	TWR 123.25	SMC 121.8	CTAF+AFRU (AH) 123.25	FIA (AH) ML CEN 125.2	AFRU+PAL (AH) 123.25	Bearings are Magnetic Elevations in FEET AMSL
-----------------	----------------------	---------------	--------------	--------------------------	--------------------------	-------------------------	--

NOT TO SCALE

**CLASS D SPEED
LIMITS APPLY**

RNP 1



10 NM MSA 4200

ARRIVAL: ARRAN ONE

- From ARRAN track 227° to OLRUT

RWY 07:

- Track 262° to POKIT
Cross POKIT AT or ABV 8000ft
- Turn LEFT, track 243° to RURLA
- Track via RNP Z RWY 07 or RNP Y RWY 07 (LNAV/VNAV ONLY)

RWY 25:

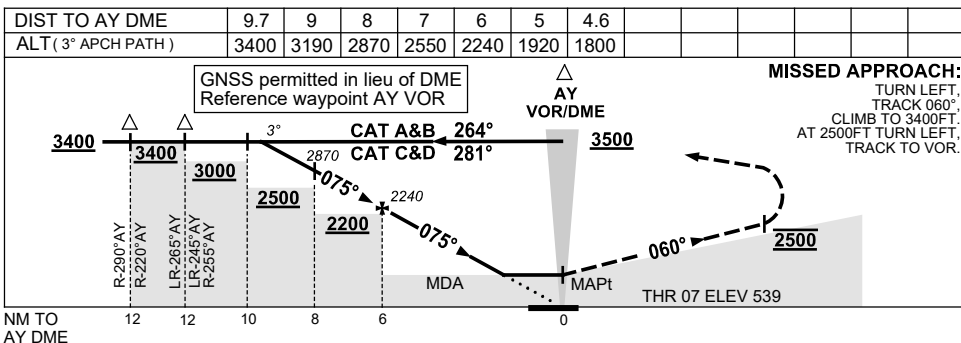
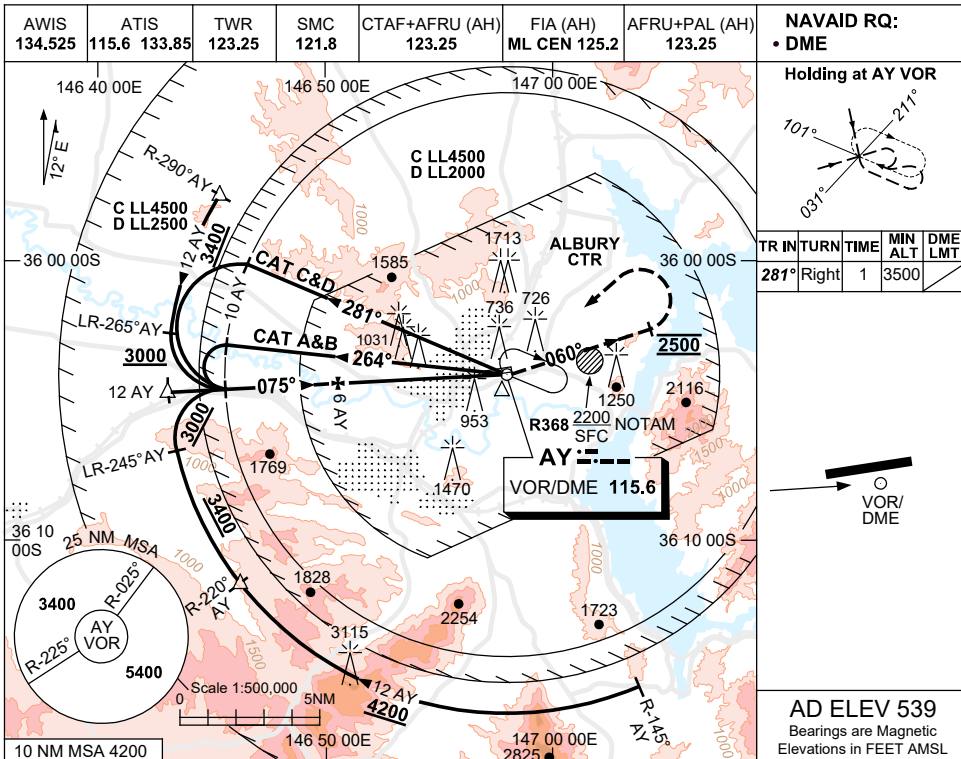
- Track via RNP RWY 25

NOTE: PROC NOT AVBL WHEN R368 ACT UNLESS ADVISED BY ATC.

USE QNH

VOR RWY 07
ALBURY, NSW (YMAV)

30 NOV 2023



NOTES

CATEGORY	A	B	C	D
S-I VOR/DME	1800 (1261-5.0)			
CIRCLING	2050 (1511-2.4)	2220 (1681-4.0)	2270 (1731-5.0)	
ALTERNATE	(2011-4.4)	(2181-6.0)	(2231-7.0)	

1. COLOUR: SEE SPEC NOTICES.
2. CIRCLING NOT AVBL WHEN R368 ACT.

Changes: CIRCLING & ALTERNATE CAT C MINIMA, NEW LOGO.

MAYV001-177

