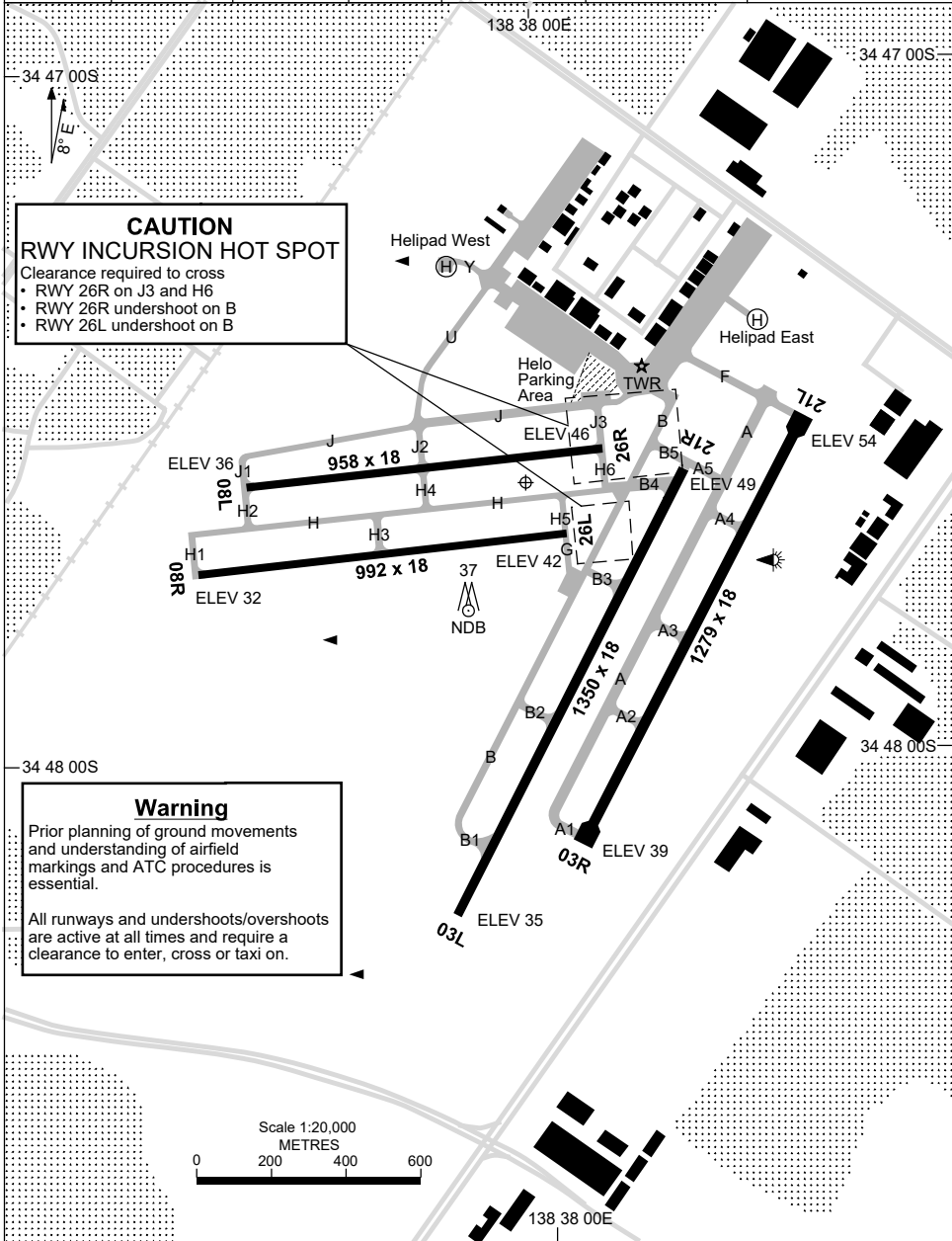


28 NOV 2024

34 47 36S 138 37 59E

**ADELAIDE/PARAFIELD, SA (YPPF)**

ATIS PF 120.9 416	APP AD 124.2 118.2	TWR PF 118.7 124.6	SMC PF 119.9	FIA (AH) AD CEN 130.45	CTAF+AFRU (AH) 118.7	Bearings are Magnetic Elevations in FEET AMSL
----------------------	-----------------------	-----------------------	-----------------	---------------------------	-------------------------	--



Changes: Editorial.

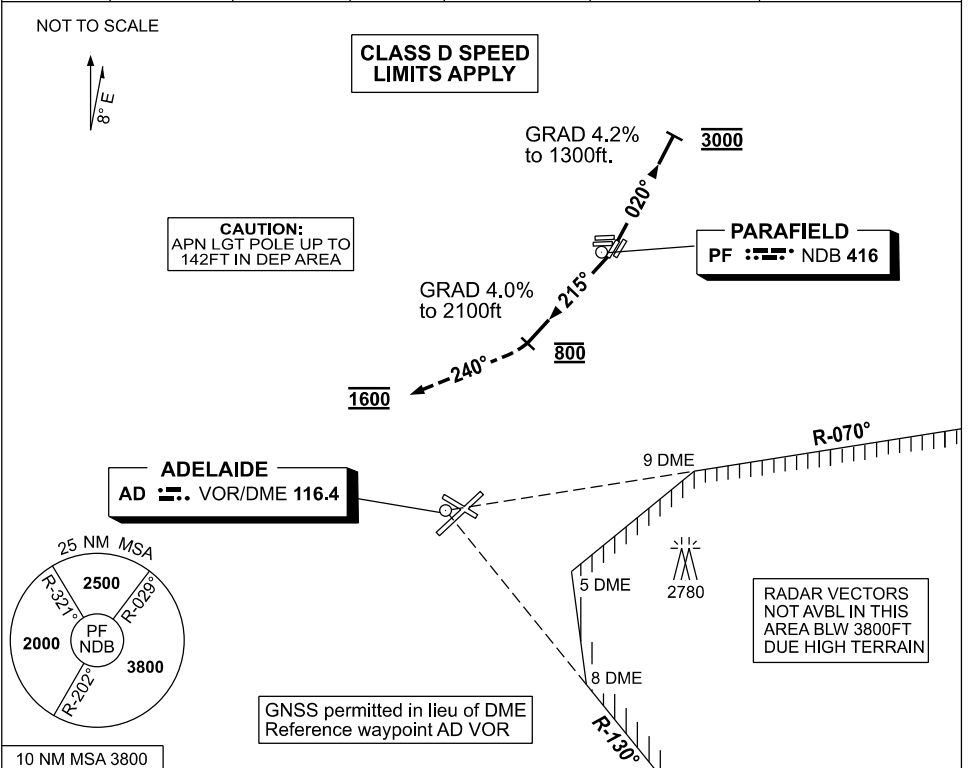
PPFAD01-181



**STANDARD INSTRUMENT DEPARTURES (SID)  
PARAFIELD ONE DEP (RADAR) - RWY 03L & 21R  
ADELAIDE/PARAFIELD, SA (YPPF)**

**19 MAR 2026**

ATIS PF <b>120.9 416</b>	APP AD <b>124.2 118.2</b>	TWR PF <b>118.7 124.6</b>	SMG PF <b>119.9</b>	FIA (AH) <b>AD CEN 130.45</b>	CTAF+AFRU (AH) <b>118.7</b>	Bearings are Magnetic Elevations in FEET AMSL
-----------------------------	------------------------------	------------------------------	------------------------	----------------------------------	--------------------------------	--



**PARAFIELD ONE DEPARTURE (RADAR)**

**RWY 03L**

- GRAD 4.2% to 1300ft, then 3.3%
- Track 020°
- At 3000ft turn to assigned heading or track
- Contact Approach when advised by Tower or approaching controlled airspace

**RWY 21R**

- GRAD 4% to 2100ft, then 3.3%
- At DER, turn RIGHT track 215°
- At 800ft turn RIGHT track 240°
- At 1600ft turn to assigned heading
- Contact Approach when advised by Tower or approaching controlled airspace

**COMMUNICATIONS FAILURE PROCEDURE**

On recognition of communication failure

- Squawk 7600
- Maintain last assigned vector for two minutes, and
- CLIMB IF NECESSARY TO MINIMUM SAFE ALTITUDE, to maintain terrain clearance, then
- Proceed in accordance with the latest ATC route clearance acknowledged.

Changes: OBST HGT 142FT IN CAUTION NOTE.

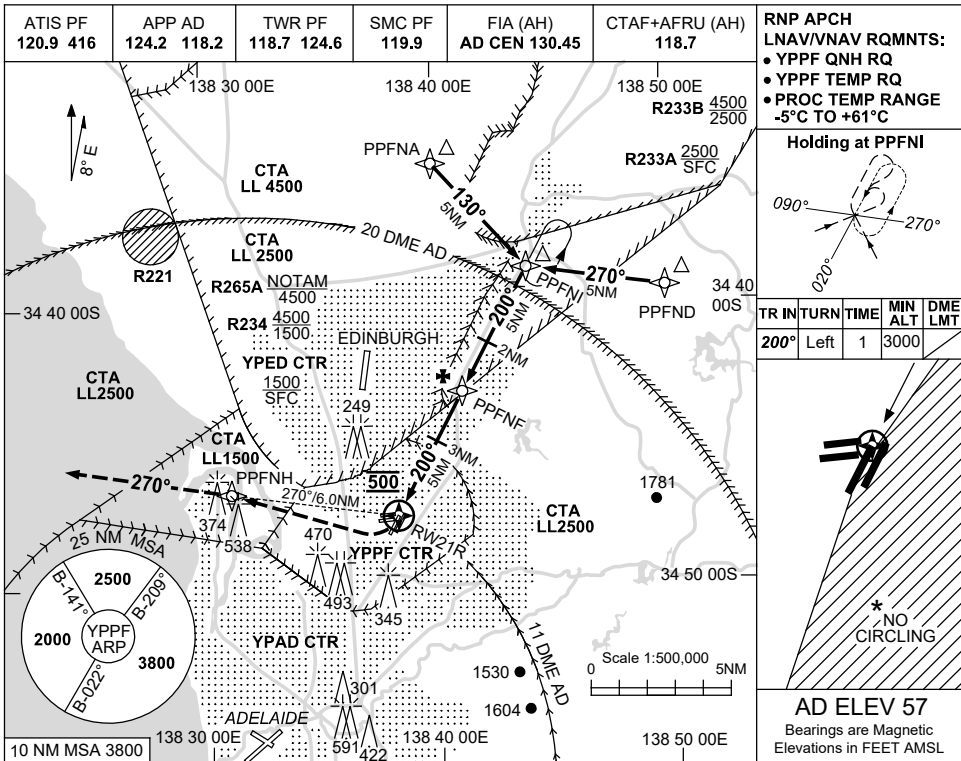
PPFDP01-186

USE QNH

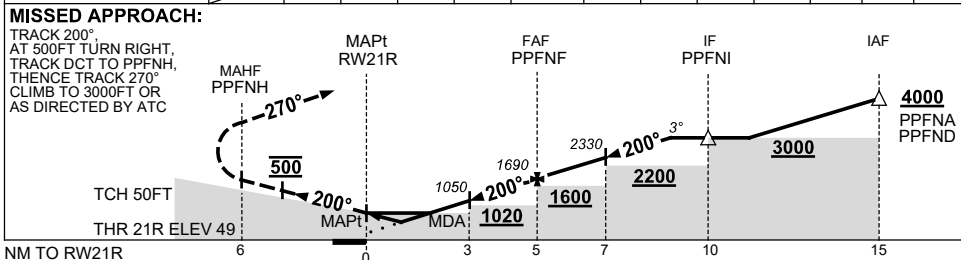
RNP RWY 21R

23 MAR 2023

ADELAIDE/PARAFIELD, SA (YPPF)



NM TO NEXT WPT	RW21R	1.2	1.8	3	4	PPFNF	1	2	3	4	4.1		
ALT (3° APCH PATH)		480	660	1050	1370	1690	2010	2330	2650	2960	3000		



**NOTES**

CATEGORY	A	B	C	D
LNAV/VNAV	480 (431-2.4)		NOT APPLICABLE	
LNAV	660 (611-3.5)			
CIRCLING *	1000 (943-2.4)			
ALTERNATE	(1443-4.4)			

\* 1. NO CIRCLING EAST OF RWY 03L/21R.  
 2. PROC NOT AVBL FOR TRAINING.

Changes: MISSED APPROACH INSTRUCTION.

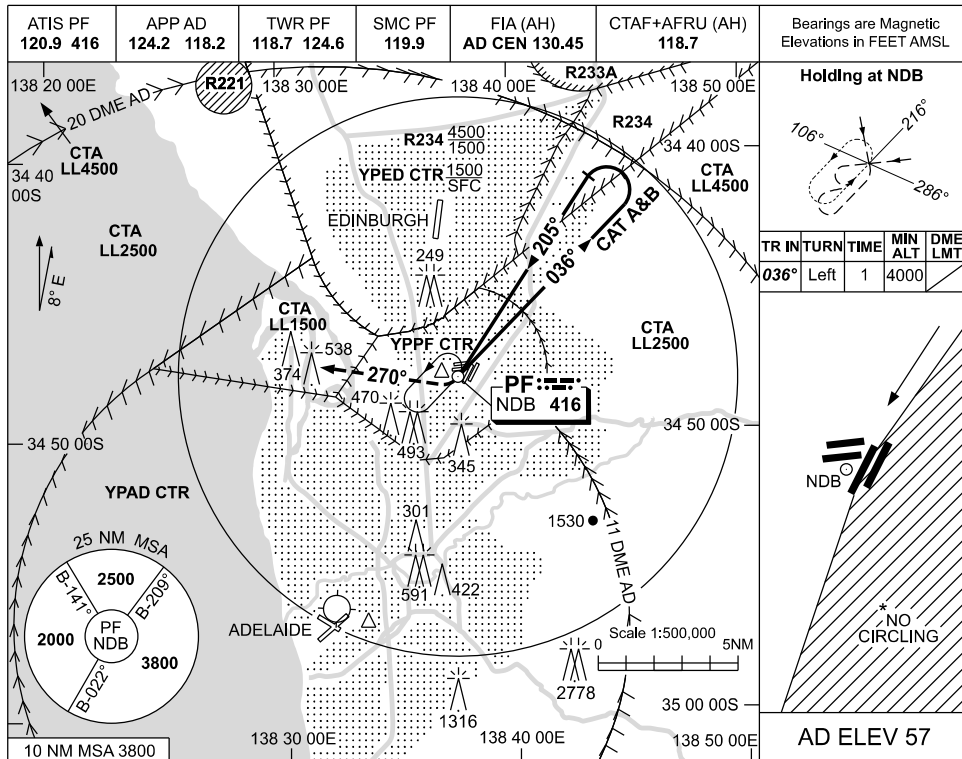
PPFGN01-174

USE QNH

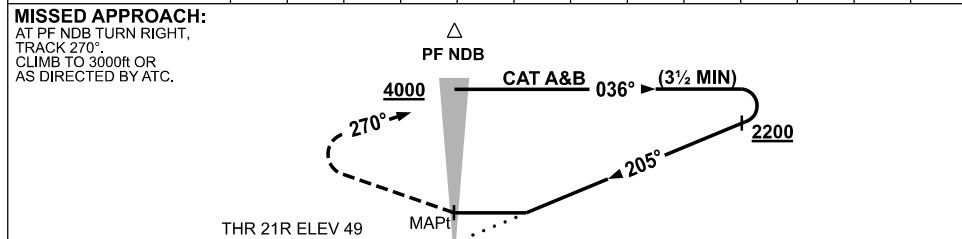
NDB-Y RWY 21R

**ADELAIDE/PARAFIELD, SA (YPPF)**

19 MAR 2026



DIST BY DME	NOT APPLICABLE
ALT (3° APCH PATH)	



NM to AD DME

**NOTES**

CATEGORY	A	B	C	D
S-I NDB	<b>1580</b> (1531-5.0)		NOT APPLICABLE	
CIRCLING *	<b>1580</b> (1523-2.4)			
ALTERNATE	(2023-4.4)			

1. MAX IAS:  
 INITIAL:  
 CAT A&B 140KT.  
 HOLDING: 150KT.
- \* 2. NO CIRCLING EAST  
 OF RWY 03L/21R.
3. PROC NOT AVBL  
 FOR TRAINING.

Changes: YPAD ABN DELETED.

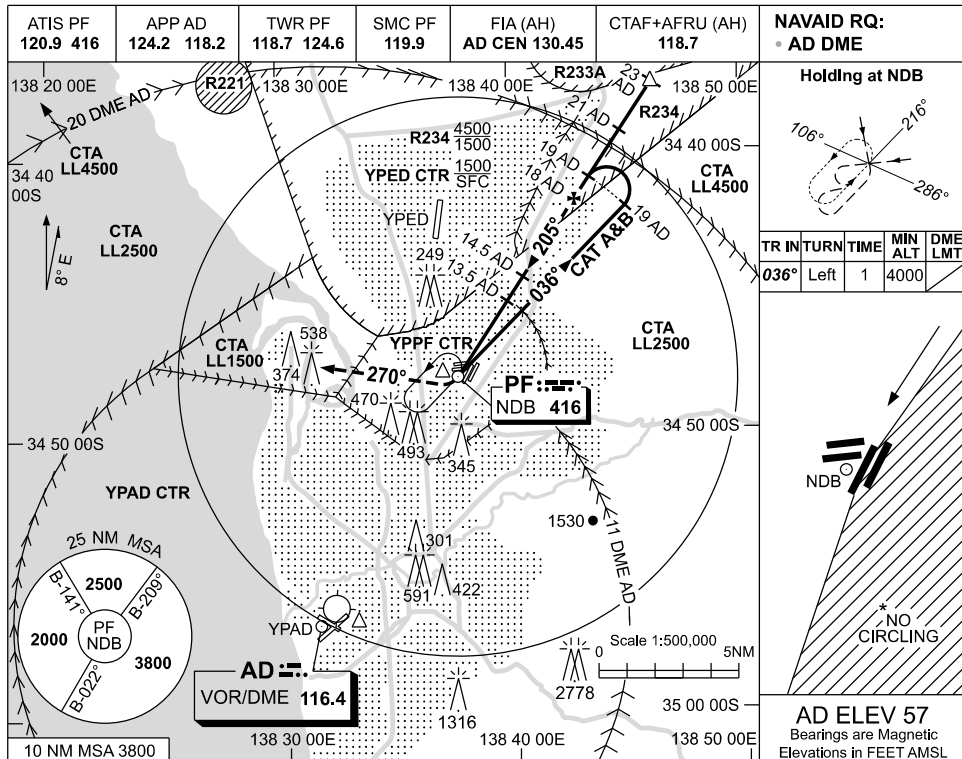
PPFN01-186

USE QNH

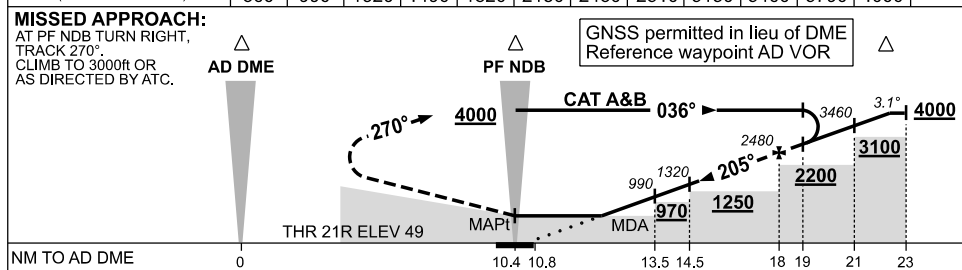
NDB-Z RWY 21R

19 MAR 2026

ADELAIDE/PARAFIELD, SA (YPPF)



DIST BY DME (AD)	13.1	13.5	14.5	15	16	17	18	19	20	21	22	22.6	
ALT (3.1° APCH PATH)	860	990	1320	1490	1820	2150	2480	2810	3130	3460	3790	4000	



**NOTES**

CATEGORY	A	B	C	D
S-I NDB/DME	860 (811-4.6)		NOT APPLICABLE	
CIRCLING *	1000 (943-2.4)			
ALTERNATE	(1443-4.4)			

1. MAX IAS:  
INITIAL:  
CAT A&B 140KT.  
HOLDING: 150KT.
- \*2. NO CIRCLING EAST OF RWY 03L/21R.
3. PROC NOT AVBL FOR TRAINING.

Changes: YPAD ABN DELETED.

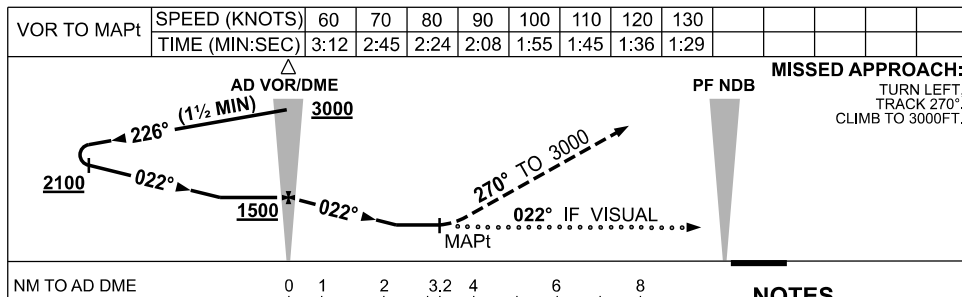
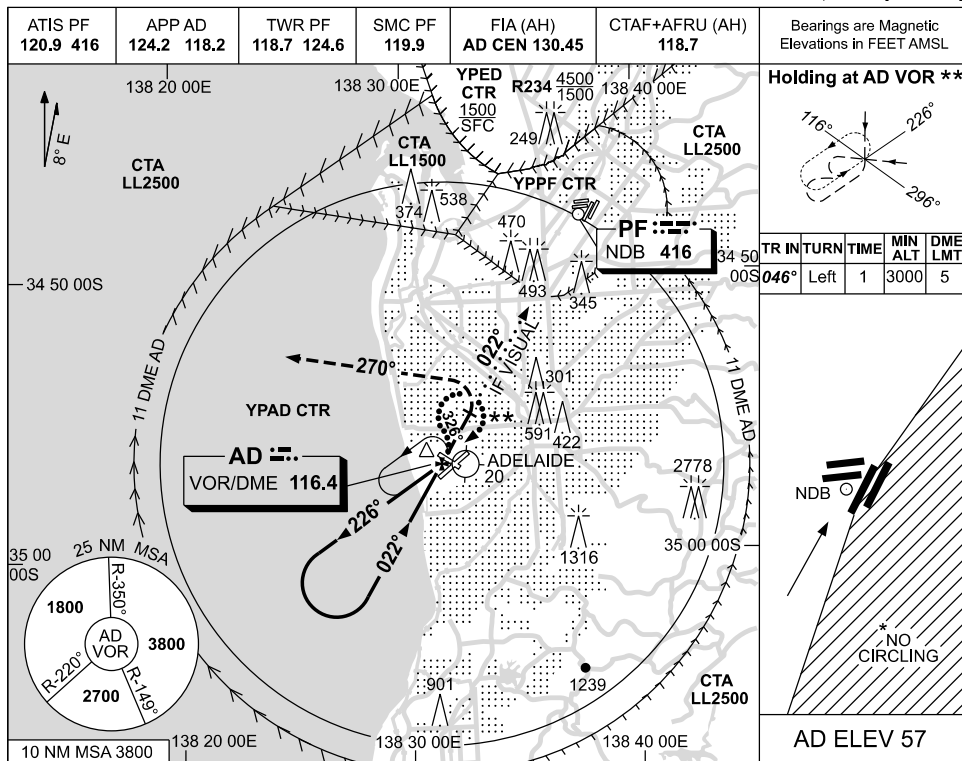
PPFNB02-186

USE QNH

VOR-A

19 MAR 2026

**ADELAIDE/PARAFIELD, SA (YPPF)**



**NOTES**

- MAX IAS:  
APPROACH: 140KT.  
HOLDING : 150KT.
- ACFT MAY BE RADAR VECTORED TO INTERCEPT FINAL APPROACH AT VOR, 1500FT.
- NO CIRCLING EAST OF RWY 03L/21R.
- PROC NOT AVBL FOR TRAINING.
- PROC TURN (80°/260°) REQD TO JOIN PROC FROM HOLD.

CATEGORY	A	B	C	D	
			NOT APPLICABLE		
CIRCLING *	1120 (1063-2.4)				
ALTERNATE	(1563-4.4)				

Changes: YPAD ABN DELETED.

PPFV001-186