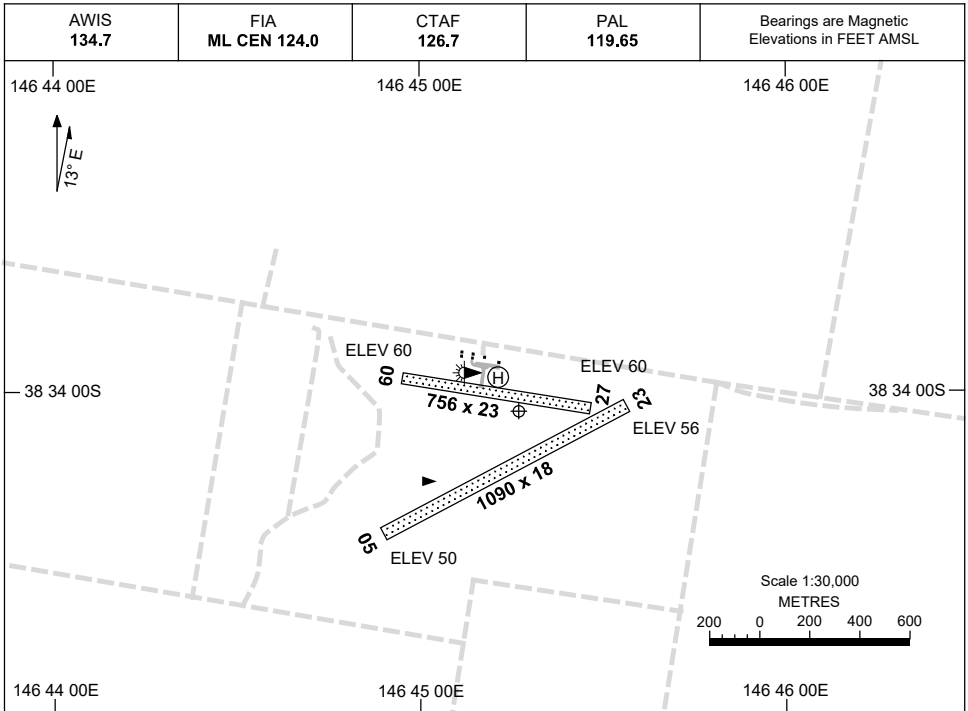


15 JUN 2023

AD ELEV 60  
38 34 03S 146 45 16E

AERODROME CHART  
**YARRAM, VIC (YYRM)**



	<b>AERODROME LIGHTING</b>	
<b>RWY</b>	TAXIWAYS : BLUE EDGE RL : PAL 119.65 , SDBY (15 SEC).	
<b>09</b> <small>086</small>	LIRL	
<small>266</small> <b>27</b>	LIRL	
<b>05</b> <small>050</small>	NIL	
<small>230</small> <b>23</b>	NIL	

**NOTES**

1. AWIS REQUIRES 1 SEC PULSE TO OPERATE.

Changes: REMOVED NOTES.

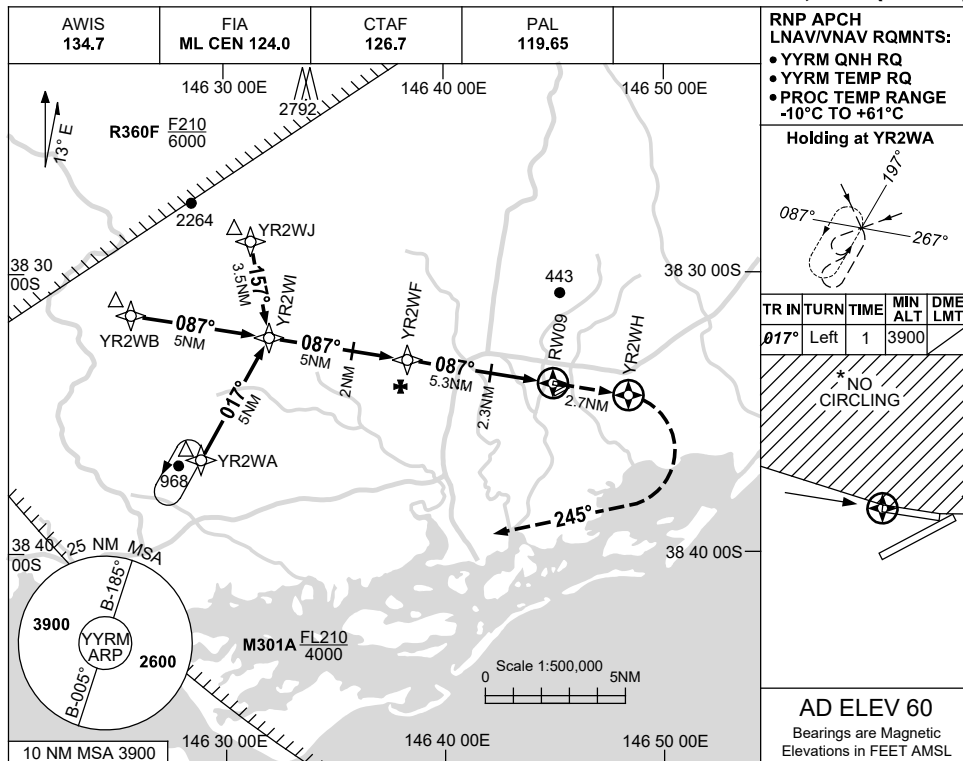
YRMAD01-175

USE QNH

RNP RWY 09

YARRAM, VIC (YYRM)

30 NOV 2023



**RNP APCH LNAV/VNAV RQMNTS:**

- YYRM QNH RQ
- YYRM TEMP RQ
- PROC TEMP RANGE -10°C TO +61°C

**Holding at YR2WA**

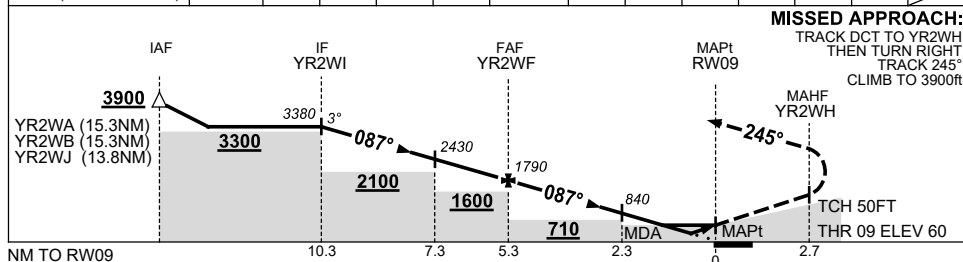
TR IN TURN TIME MIN ALT DME LMT

017°	Left	1	3900	
------	------	---	------	--

\* NO CIRCLING

**AD ELEV 60**  
Bearings are Magnetic  
Elevations in FEET AMSL

NM TO NEXT WPT	YR2WI	4	3	2	1	YR2WF	4	3	2.3	2	1.6	1	RW09
ALT (3° APCH PATH)	3380	3060	2750	2430	2110	1790	1380	1070	840	750	620	420	



**NOTES**

CATEGORY	A	B	C	D
LNAV/VNAV	420 (360-2.0)			NOT APPLICABLE
LNAV	620 (560-3.2)			
CIRCLING *	660 (600-2.4)		760 (700-4.0)	
ALTERNATE	(1100-4.4)		(1200-6.0)	

- MAX IAS :  
YR2WA : 210KT.  
YR2WB : 210KT.  
YR2WJ : 190KT.
- \* 2. NO CIRCLING N OF RWY 09/27.

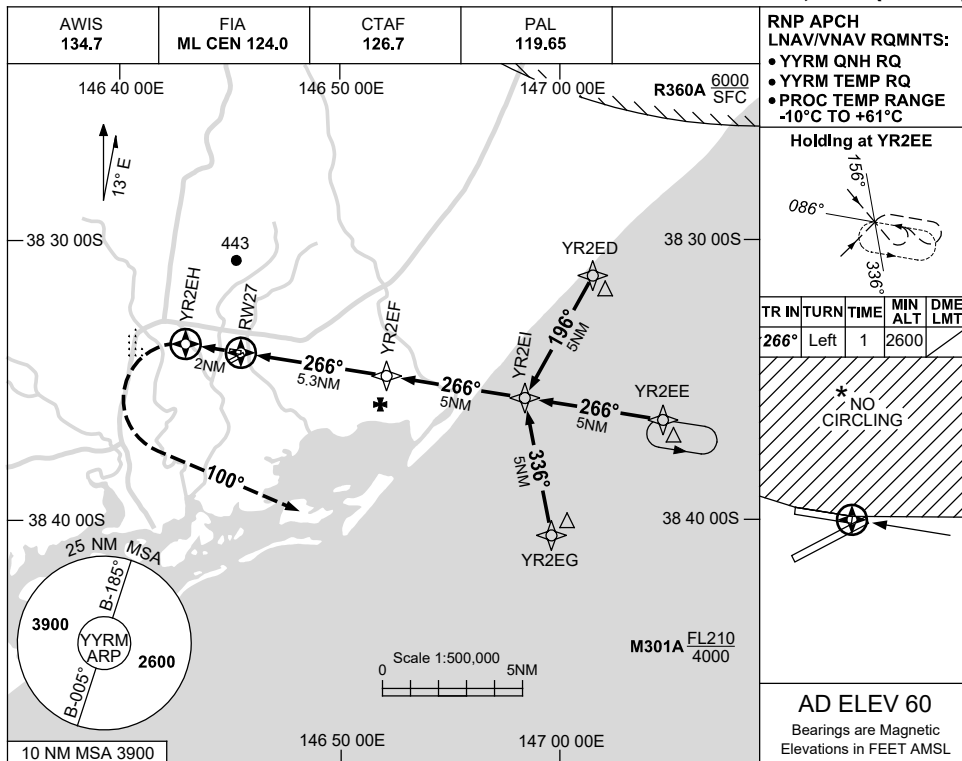
Changes: R360F REPLACES R359G, M301A REPLACES R359F, Editorial.

YRMGN01-177

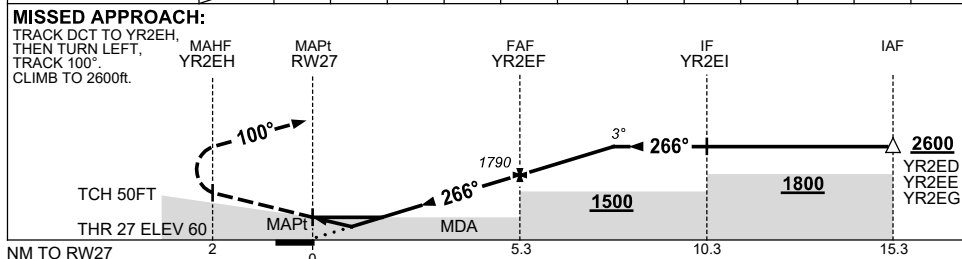
USE QNH

RNP RWY 27  
**YARRAM, VIC (YYRM)**

30 NOV 2023



NM TO NEXT WPT	RW27	1	1.6	2	3	4	YR2EF	1	2	2.5		
ALT (3° APCH PATH)		420	620	750	1070	1380	1790	2110	2430	2600		



**NOTES**

CATEGORY	A	B	C	D
LNAV/VNAV		420 (360-2.0)		NOT APPLICABLE
LNAV		620 (560-3.2)		
CIRCLING *	660 (600-2.4)		760 (700-4.0)	
ALTERNATE	(1100-4.4)		(1200-6.0)	

- MAX IAS : INITIAL : 210KT.
- NO CIRCLING N OF RWY 09/27.

Changes: R360A REPLACES R359A, M301A REPLACES R359F, Editorial.

YRMGN02-177