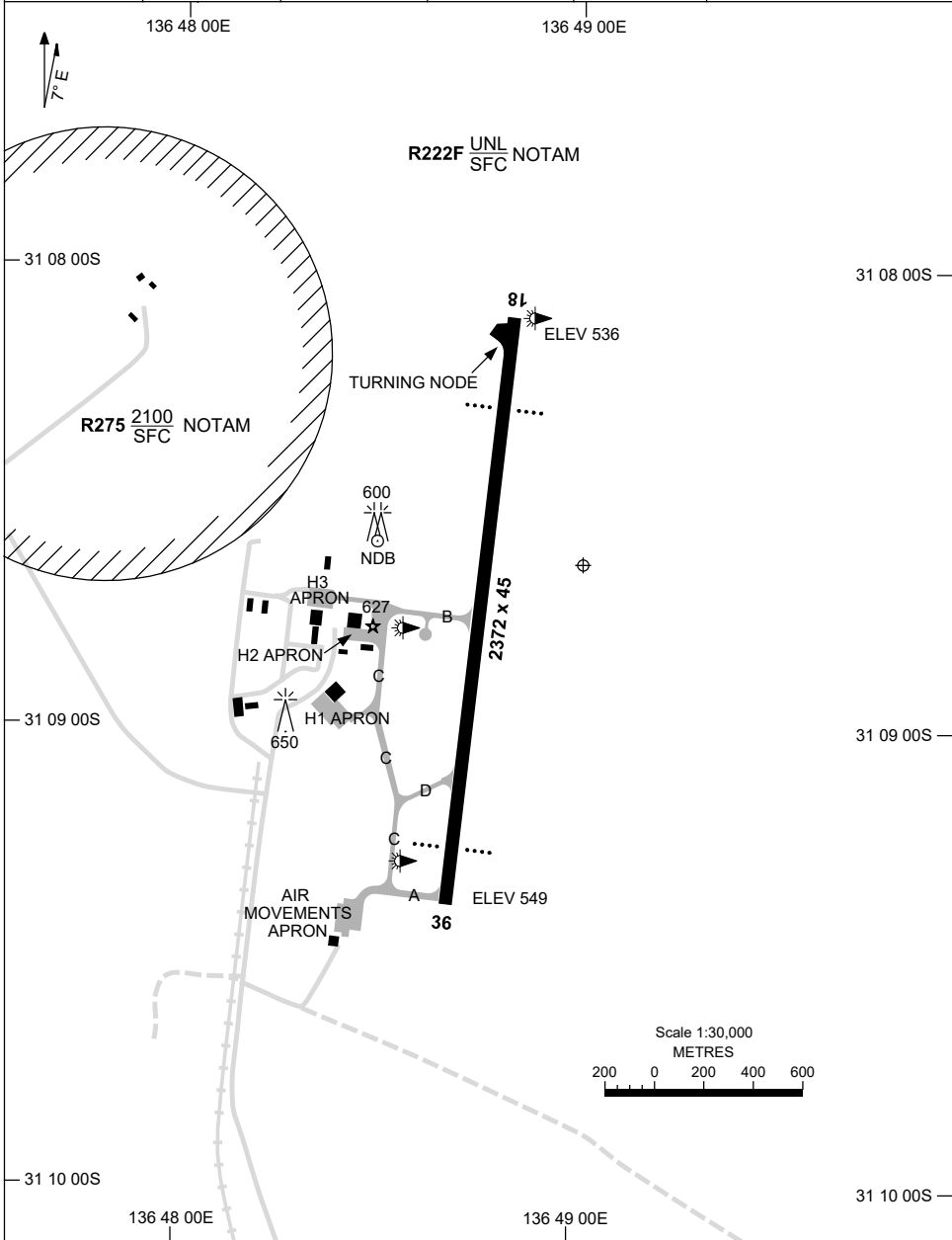


7 SEP 2023

AD ELEV 549  
31 08 39S 136 49 01E

AERODROME CHART - Page 1  
**WOOMERA, SA (YPWR)**

FIA ML CEN 122.0	TWR 118.3 257.8	CTAF+AFRU (AH) 118.3	AFRU+PAL 118.3		Bearings are Magnetic Elevations in FEET AMSL
---------------------	--------------------	-------------------------	-------------------	--	--



Changes: Editorial.

PWRAD01-176



15 JUN 2023

AD ELEV 549  
31 08 39S 136 49 01E

AERODROME CHART - Page 2  
**WOOMERA, SA (YPWR)**

FIA ML CEN 122.0	TWR 118.3 257.8	CTAF+AFRU (AH) 118.3	AFRU+PAL 118.3		Bearings are Magnetic Elevations in FEET AMSL
<b>RWY</b>	<b>AERODROME LIGHTING</b>				
	ABN : ALTN W/G 2.5 SEC TAXIWAY : GREEN CENTRELINE , TURNING NODE BLUE EDGE RL : AFRU+PAL 118.3 , SDBY (3-5 SEC)				
<b>18</b> <sup>179</sup> 359 <b>36</b>	PAPI BOTH SIDES 3.0° 48FT MIRL PAPI BOTH SIDES 3.0° 48FT MIRL				
<p><b>NOTES</b></p> <p>1. AWIS (PHONE) 08 8150 3820</p>					

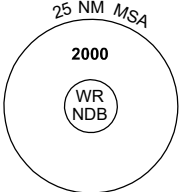
Changes: NOTES, SDBY SWITCH OVER TIME.

PWRAD02-175

# GNSS ARRIVAL PROCEDURES WOOMERA, SA (YPWR)

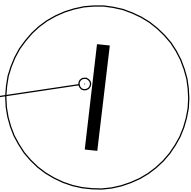
**15 AUG 2019**

FIA <b>ML CEN 122.0</b>	TWR <b>118.3 257.8</b>	CTAF+AFRU (AH) <b>118.3</b>	AFRU+PAL <b>118.3</b>		Bearings are Magnetic Elevations in FEET AMSL
----------------------------	---------------------------	--------------------------------	--------------------------	--	--



25 NM MSA  
2000  
WR NDB

**REFERENCE WAYPOINT WR NDB**  
AWIS (PHONE) 08 8150 3820



WR: NDB 248

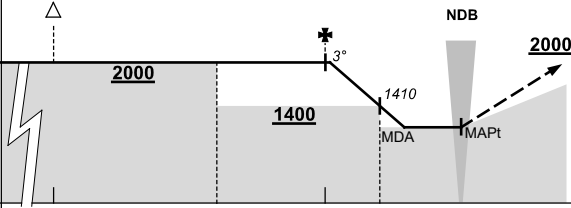
10 NM MSA 2000

AD ELEV 549

**ALL TRACKS**

**TO**

**WR NDB**



NDB

**MISSED APPROACH:**  
CLIMB ON TRACK TO 2000FT.

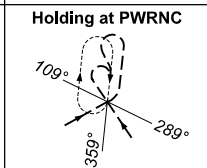
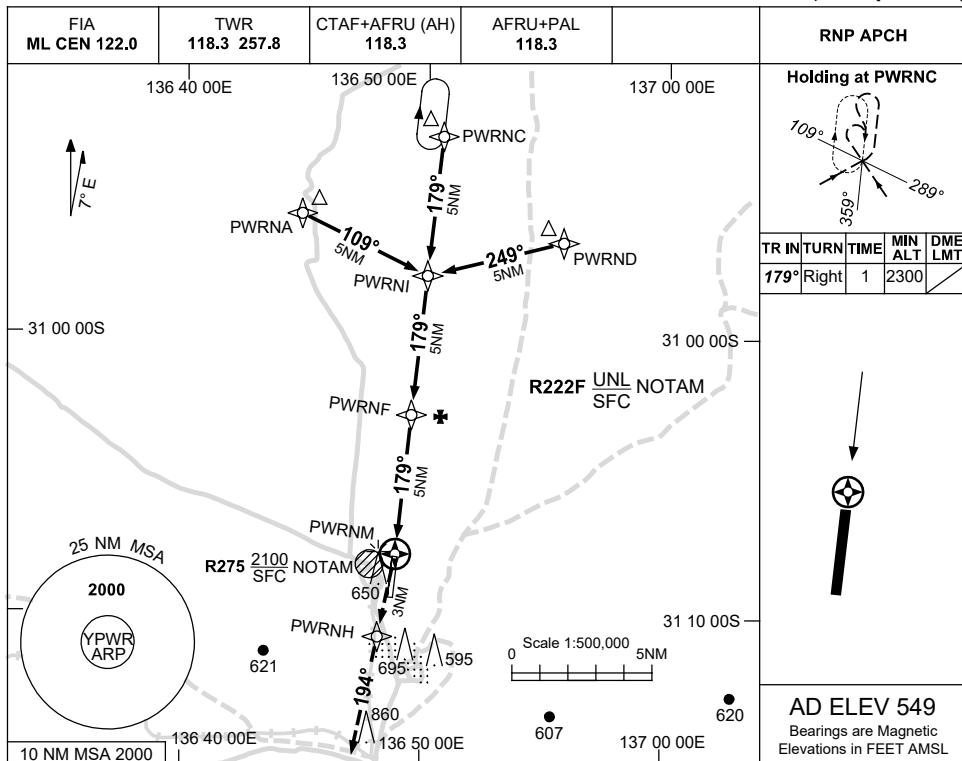
**NOTE:**  
PROC NOT AVBL WHEN R275 ACTIVE AD WITHIN R222F.

NM TO WR NDB	25	15	9	5	3	0																						
<b>CIRCLING MINIMA</b>				<b>A,B: 1190-2.4</b>			<b>C: 1290-4.0</b>			<b>D: 1340-5.0</b>																		
NM TO WR NDB	4.9	4	3	2.8	2.6	2.3																						
ALT (3°APCH PATH)	2000	1730	1410	1340	1290	1190																						

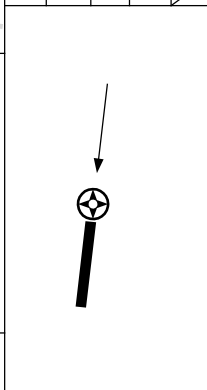
USE QNH

RNP RWY 18  
WOOMERA, SA (YPWR)

1 DEC 2022

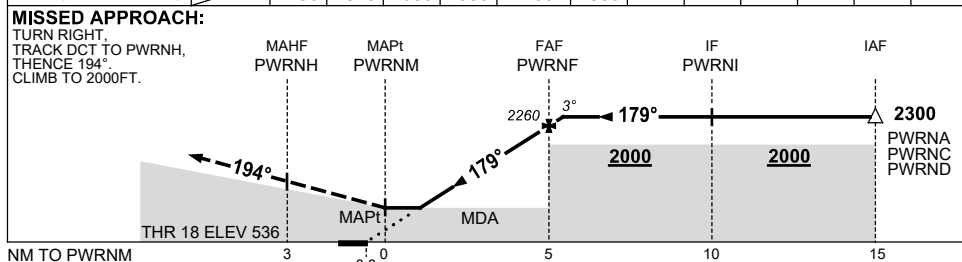


TR	INTURN	TIME	MIN ALT	DME LMT
179°	Right	1	2300	



**AD ELEV 549**  
Bearings are Magnetic  
Elevations in FEET AMSL

NM TO NEXT WPT	PWRNM	1.5	2	3	4	PWRNF	0.2				
ALT (3° APCH PATH)		1150	1310	1630	1950	2260	2300				



**NOTES**

CATEGORY	A	B	C	D
LNAV	1150 (614-3.5)			
CIRCLING	1190 (641-2.4)	1290 (741-4.0)	1340 (791-5.0)	
ALTERNATE	(1141-4.4)	(1241-6.0)	(1291-7.0)	

- MAX IAS: INITIAL : 210KT.
- AWIS (PHONE) 08 8150 3820
- PROC NOT AVBL WHEN R275 ACTIVE

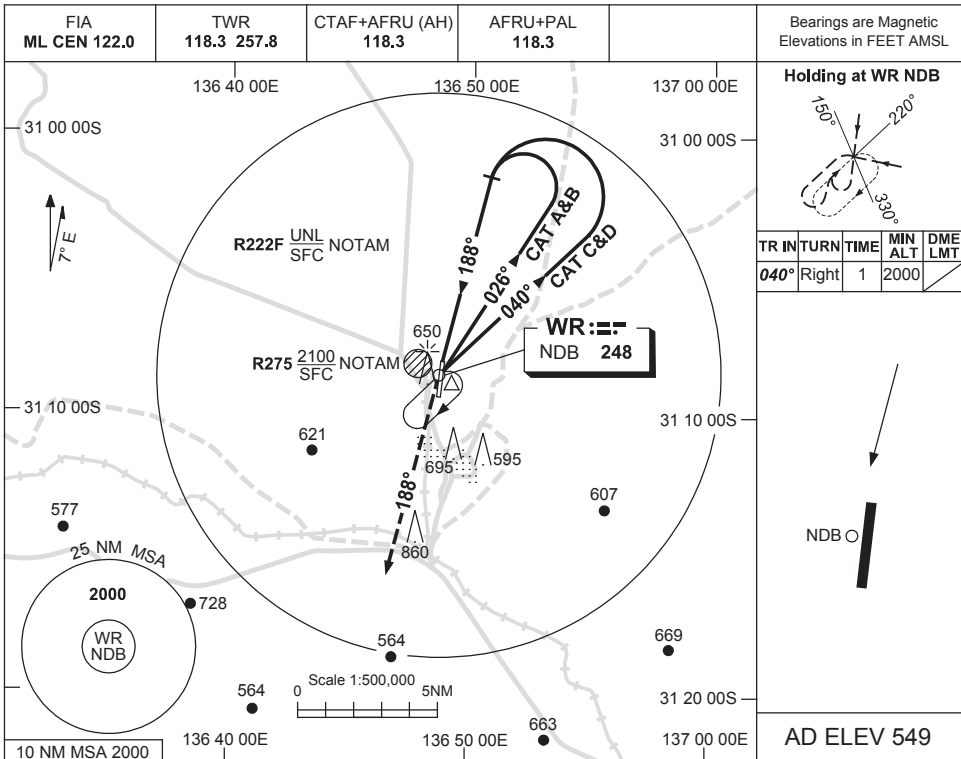
Changes: CHART TITLE, PBN SPECIFICATION BOX.

PWRGN01-173

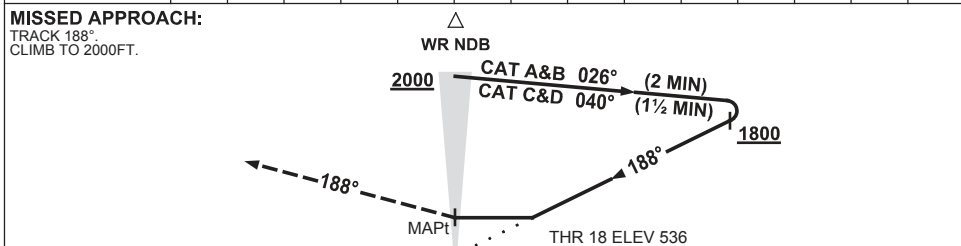
USE QNH

NDB RWY 18  
**WOOMERA, SA (YPWR)**

25 MAR 2021



DME DIST	NOT APPLICABLE									
ALT										



**NOTES**

CATEGORY	A	B	C	D
S-I NDB	<b>1150 (614-3.5)</b>			
CIRCLING	<b>1190 (641-2.4)</b>		<b>1290 (741-4.0)</b>	<b>1340 (791-5.0)</b>
ALTERNATE	(1141-4.4)		(1241-6.0)	(1291-7.0)

1. MAX IAS:  
INITIAL : 210KT.
2. AWIS (PHONE)  
08 8150 3820
3. PROC NOT AVBL  
WHEN R275 ACTIVE

Changes: S-I NDB MDH, REPLACED 673FT WITH 695FT OBST, Editorial.

PWRNB01-166